

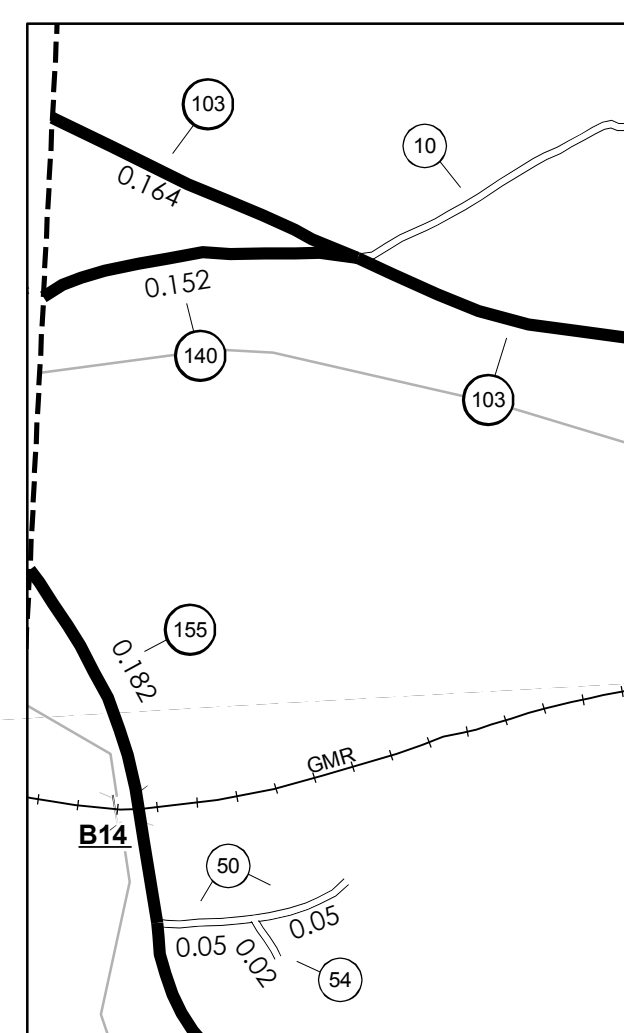
TOWN HWY. NO.	LENGTH IN MILES CLASS 3	CLASS 4	TOTAL
4	3.620	37	1.520 (0.330)
5	2.230	38	0.210 (0.600)
6	1.510	39	0.160 (0.160)
7	0.040	40	1.390
8	0.700	41	0.070
9	0.170	42	1.860
10	1.670 (1.000)	43	0.550
11	0.700 (1.220)	44	1.930
12	1.270	45	2.790
13	0.530	46	0.700
14	0.400 (0.500)	47	0.830
15	0.810 (0.500)	48	0.160
16	0.700	49	(0.700)
17	2.350 (0.810)	50	0.100
18	1.050	51	0.090
19	0.750 (0.450)	52	0.040
20	1.300 (0.420)	53	0.020
21	0.490	54	0.020
22	1.000	55	0.170
23	1.700	56	0.170
24	1.620 (0.650)	57	0.830
25	0.350 (0.030)	58	0.220
26	0.170 (0.120)	59	(0.350)
27	1.790	60	0.200 (0.210)
28	0.200	61	0.560
29	0.340 (0.260)	62	0.310
30	1.740 (0.180)	63	0.040
31	0.160 (0.090)	64	0.150
32	0.160 (1.540)	65	0.380
33	0.170	66	0.100
34	1.110	67	0.110
35	0.320	68	0.600
36	0.250 (1.570)	69	0.130
	TOTAL	47.620	11.690

* This portion of town highway is Class 3, but is functionally Class 4

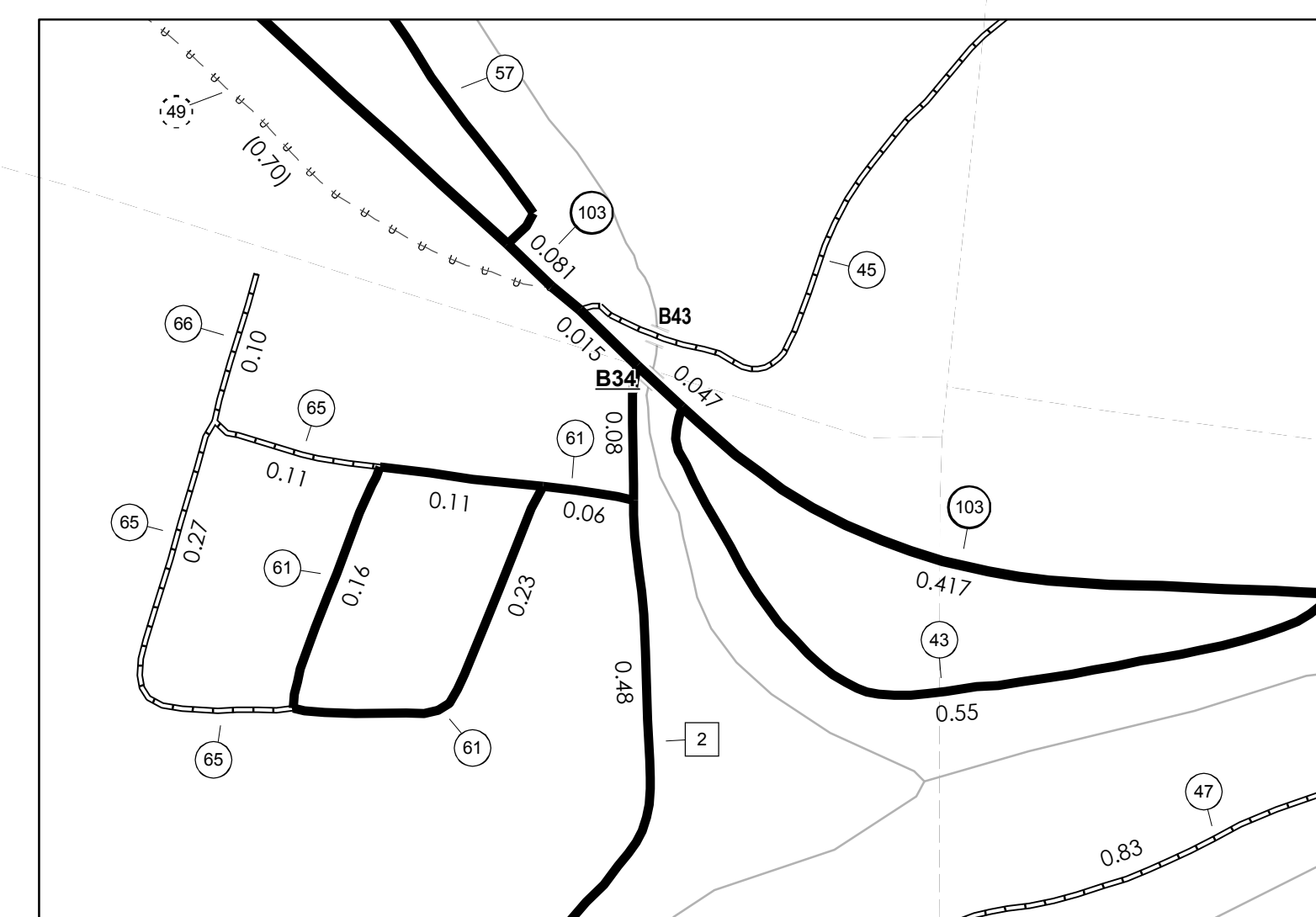
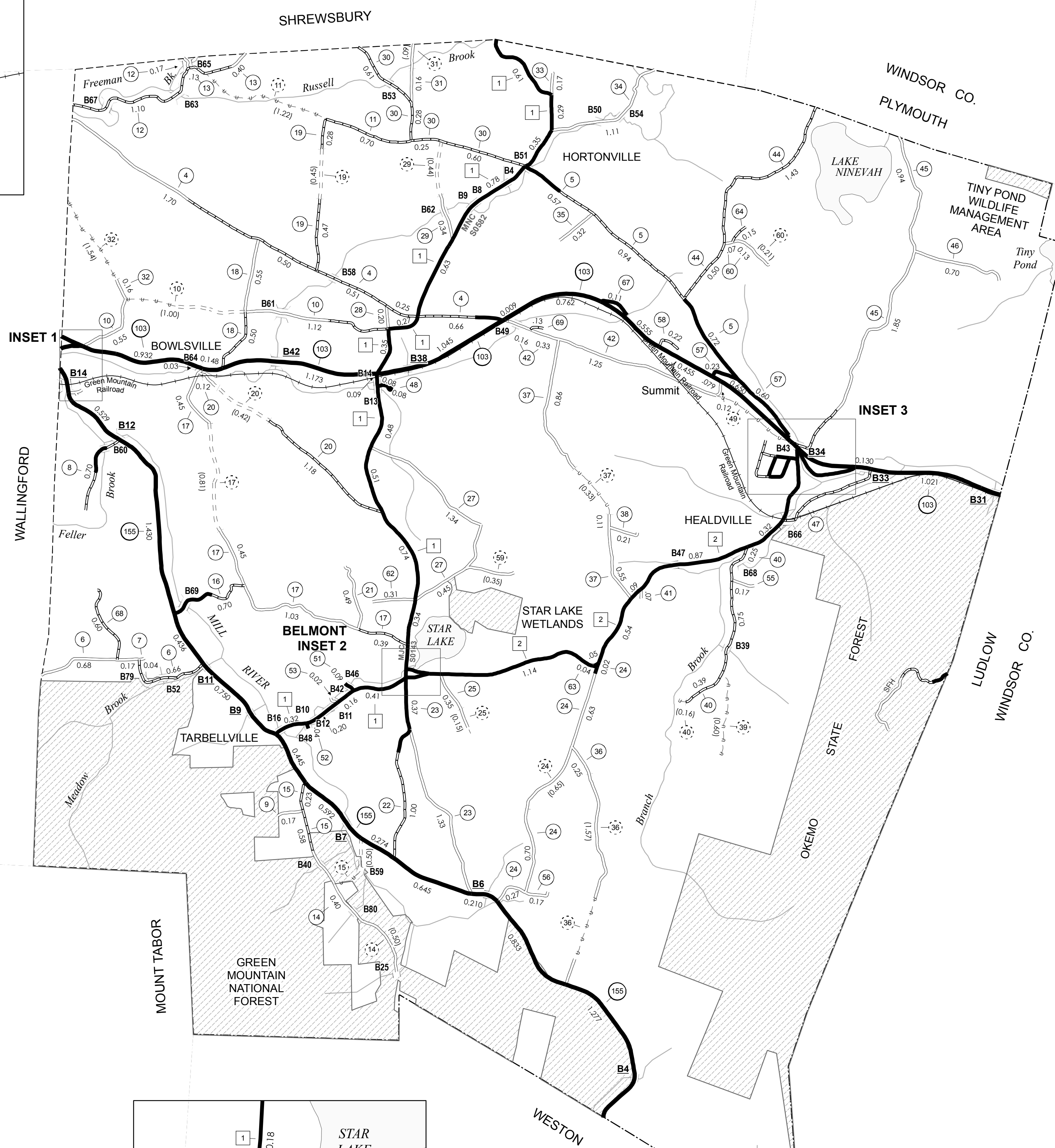
MILEAGE SUMMARY

CLASS 2		
TH-1	6.780	
TH-2	3.830	
TOTAL CLASS 2	10.610	
CLASS 3		
TOTAL CLASS 3	47.620	
TOTAL TOWN	58.230	
STATE HIGHWAY		
VT-103	7.683	
VT-140	0.152	
VT-155	7.603	
TOTAL STATE HIGHWAY	15.438	
TOTAL STATE	15.438	

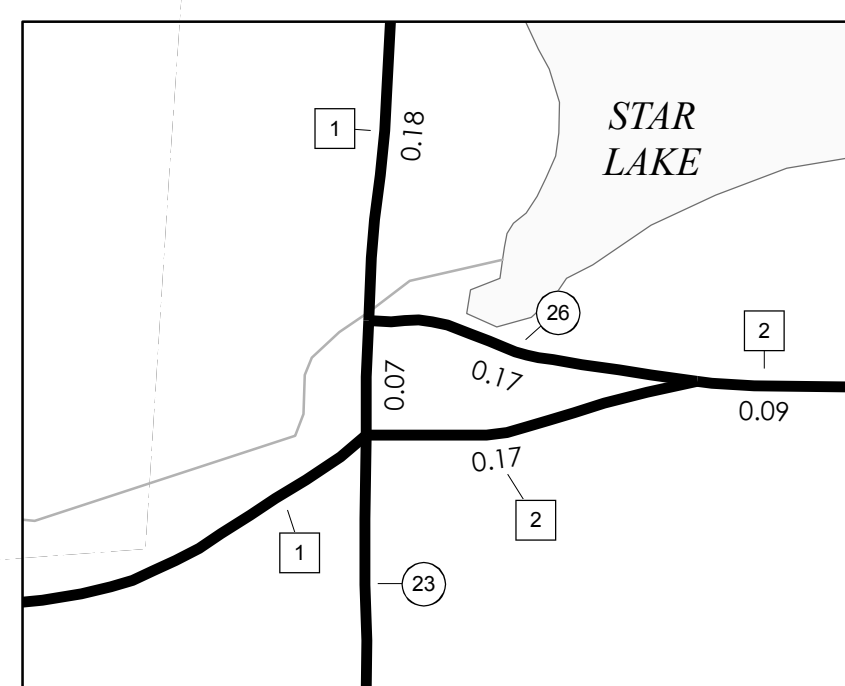
TOTAL, TRAVELED HIGHWAYS, FEB. 10, 2007: 73.668
(Excludes Class 4 and Legal Trail Mileage)



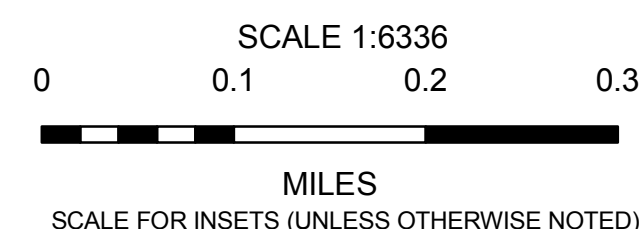
INSET 1



INSET 3



BELMONT INSET 2



- HIGHWAYS**
 - INTERSTATE
 - U.S. ROUTE
 - STATE ROUTE
 - CLASS 1
 - CLASS 2
 - CLASS 3
 - CLASS 4
 - RAILROAD
 - STATE - HARD SURFACE OR PAVED
 - TOWN - HARD SURFACE OR PAVED
 - GRAVEL
 - SOIL OR GRADED AND DRAINED EARTH
 - UNIMPROVED OR PRIMITIVE
 - IMPASSABLE OR UNTRAVELED
 - LEGAL TRAIL
 - DISCONTINUED
 - HIGHWAY CLASS CHANGE
- FEDERAL CLASSIFICATION IDENTIFIER**
 - FAU URBAN ARTERIAL OR COLLECTOR
 - MA MINOR ARTERIAL
 - MJC MAJOR COLLECTOR
 - MNC MINOR COLLECTOR
 - PA PRINCIPAL ARTERIAL
- PUBLIC LAND**
- POLITICAL SUBDIVISIONS**
 - STATE BOUNDARY
 - COUNTY BOUNDARY
 - TOWN BOUNDARY
 - VILLAGE BOUNDARY
 - URBAN COMPACT BOUNDARY
 - STREAM OR BROOK
- WATER BODIES**
 - OPEN WATER
 - SWAMP
- BRIDGE OR CULVERT**
 - BRIDGE OR CULVERT GREATER THAN 20'
 - BRIDGE OR CULVERT 6' - 20'
 - STATE BRIDGE IDENTIFIER
 - TOWN BRIDGE IDENTIFIER

DISCLAIMER:
The untraveled highways (laid-out town highways), discontinued highways, and legal trails shown hereon are those of which the Agency of Transportation has record; others may exist.
Highway and bridge data by the Agency of Transportation, Policy & Planning Division. All other data from the Vermont Center for Geographic Information.

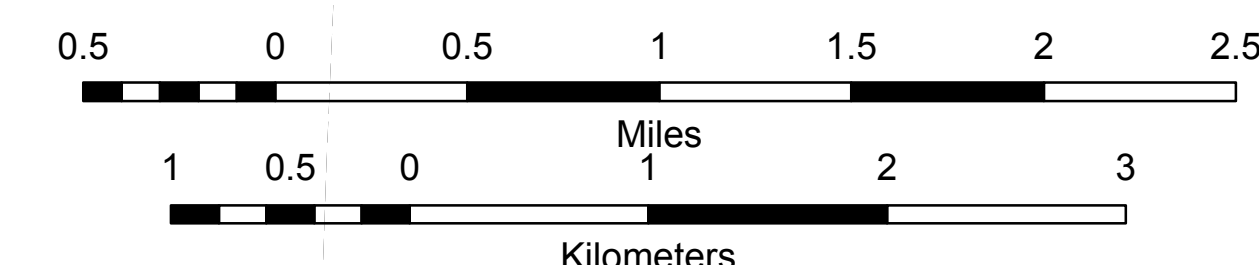
VERMONT GENERAL HIGHWAY MAP
Town of Mount Holly
RUTLAND COUNTY

Transportation District #3

Prepared by the
Vermont Agency of Transportation
Policy & Planning Division
in cooperation with
U.S. Department of Transportation
Federal Highway Administration

Mileage as of: Feb. 10, 2007
Map generated: October, 2007

SCALE: 1:31680



Vermont State Plane Coordinate System
North American Datum of 1983
SPCS_Zone_Identifier: 4400
Geodetic Reference System 80
4,000-meter grid, Easting - Northing

