

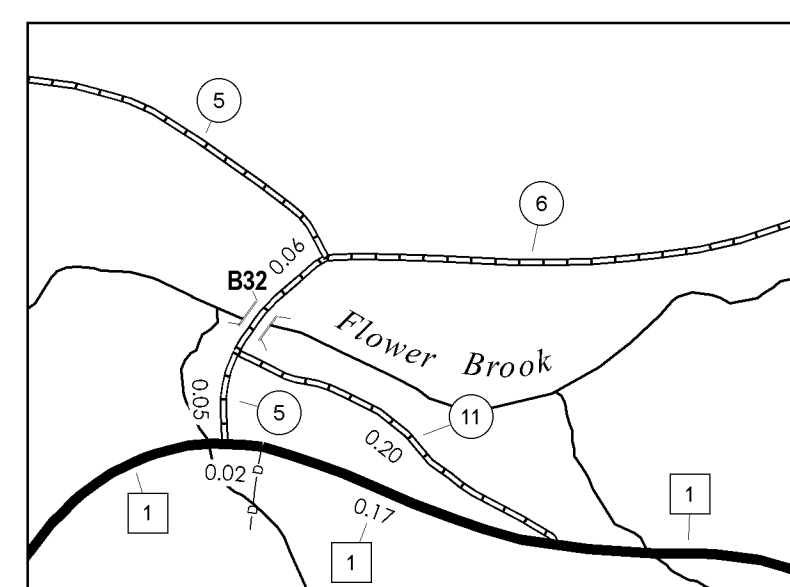
TOWN HWY. NO.	LENGTH IN MILES CLASS 3	LENGTH IN MILES CLASS 4
3	0.06	
4	3.27	
5	3.17	
6	3.53	
7		(0.59)
8	0.87	
10	1.50	
11	0.20	
12	0.15	
13	0.49	
14	0.64	
15	3.74	
16	0.31	
17	0.42	
18	0.36	
19	0.93	
20	2.59	(0.16)
21	0.65	
22	0.10	
23	0.43	
24	0.38	
25	0.73	
26	3.68	
27	1.59	
28	0.15	
29	1.33	
30	0.62	
31	1.15	
32	0.76	
33	1.34	
34	1.75	
35	1.26	
36	0.71	
41	0.06	
42	0.15	(0.16)
45	0.12	
47		(0.24)
<b>TOTAL</b>	<b>39.12</b>	<b>1.15</b>

\* This portion of town highway is Class 3, but is functionally Class 4

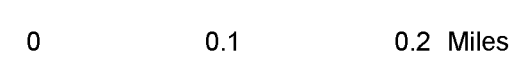
**MILEAGE SUMMARY**

CLASS	TOWN	STATE	TOTAL
<b>CLASS 2</b>			
TH-1	8.490		
TH-2	3.230		
TH-3	2.950		
<b>TOTAL CLASS 2</b>			<b>14.670</b>
<b>CLASS 3</b>			
<b>TOTAL CLASS 3</b>	<b>39.120</b>		
<b>TOTAL TOWN</b>			<b>53.790</b>
<b>STATE HIGHWAY</b>			
VT-133	0.024		
<b>TOTAL STATE HIGHWAY</b>			<b>0.024</b>
<b>US HIGHWAY</b>			
US-7	2.473		
<b>TOTAL US HIGHWAY</b>			<b>2.473</b>
<b>TOTAL STATE</b>			<b>2.497</b>

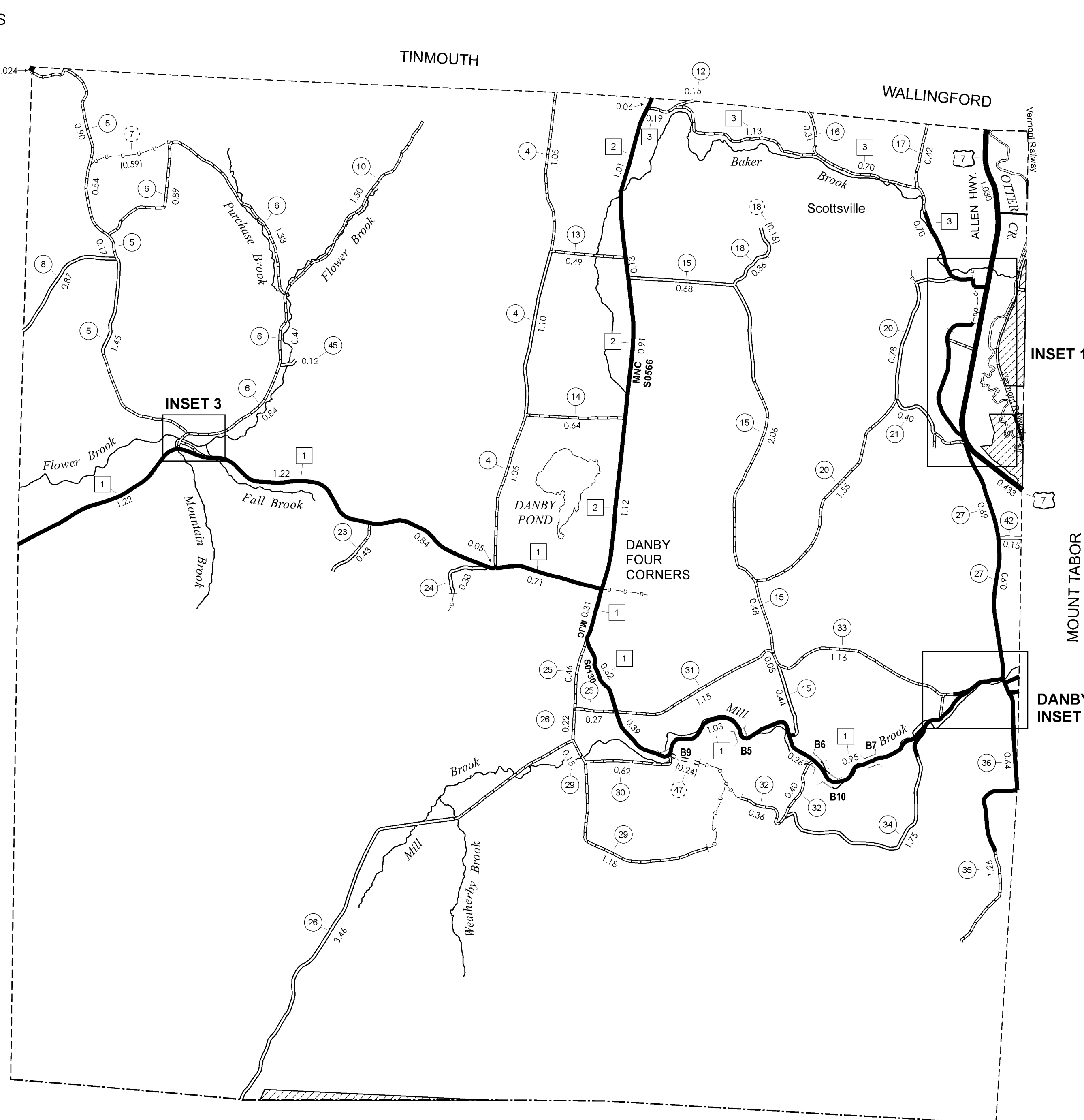
**TOTAL, TRAVELED HIGHWAYS, FEB. 10, 2008: 56.287**  
(Excludes Class 4 and Legal Trail Mileage)



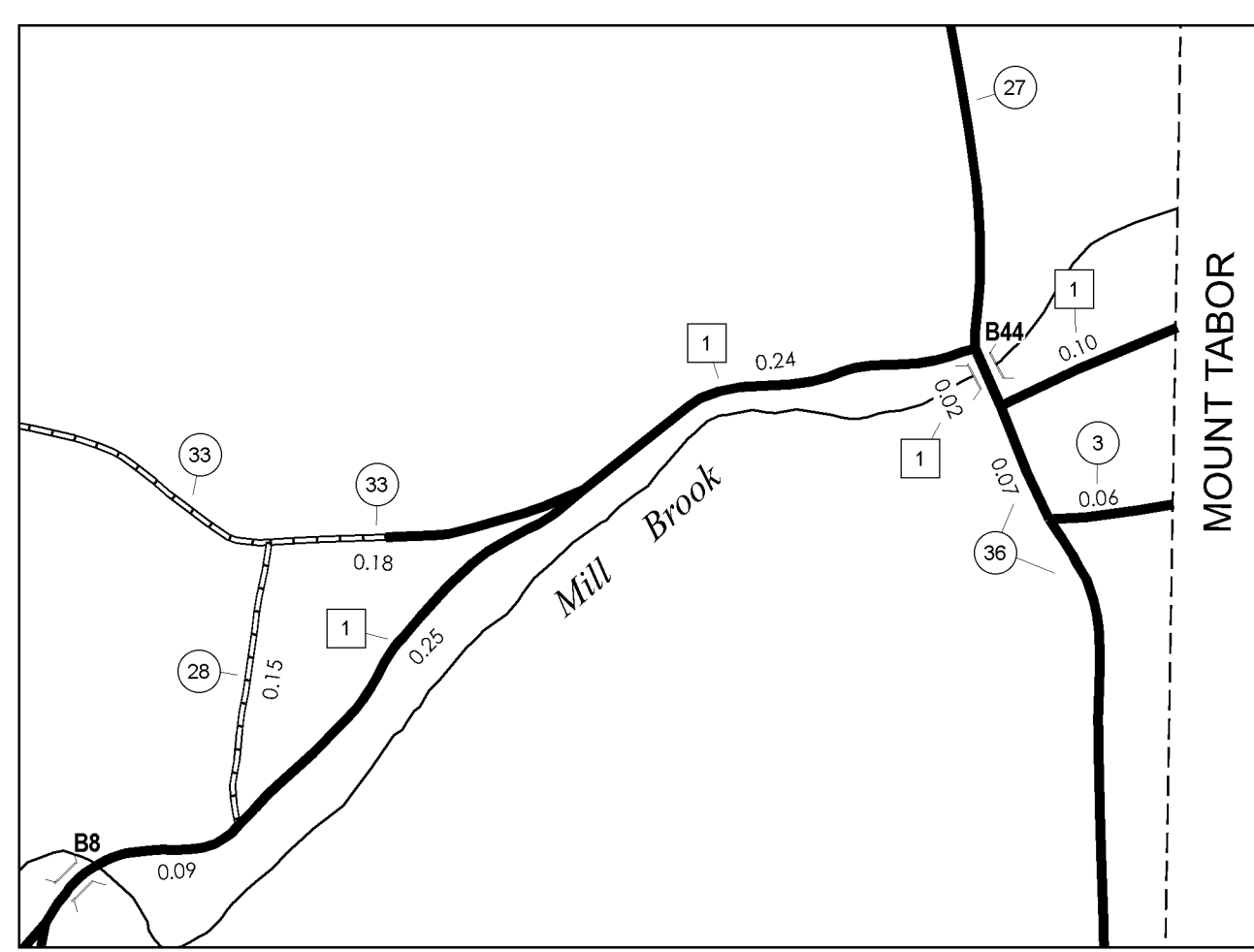
INSET 3 SCALE 1:6336



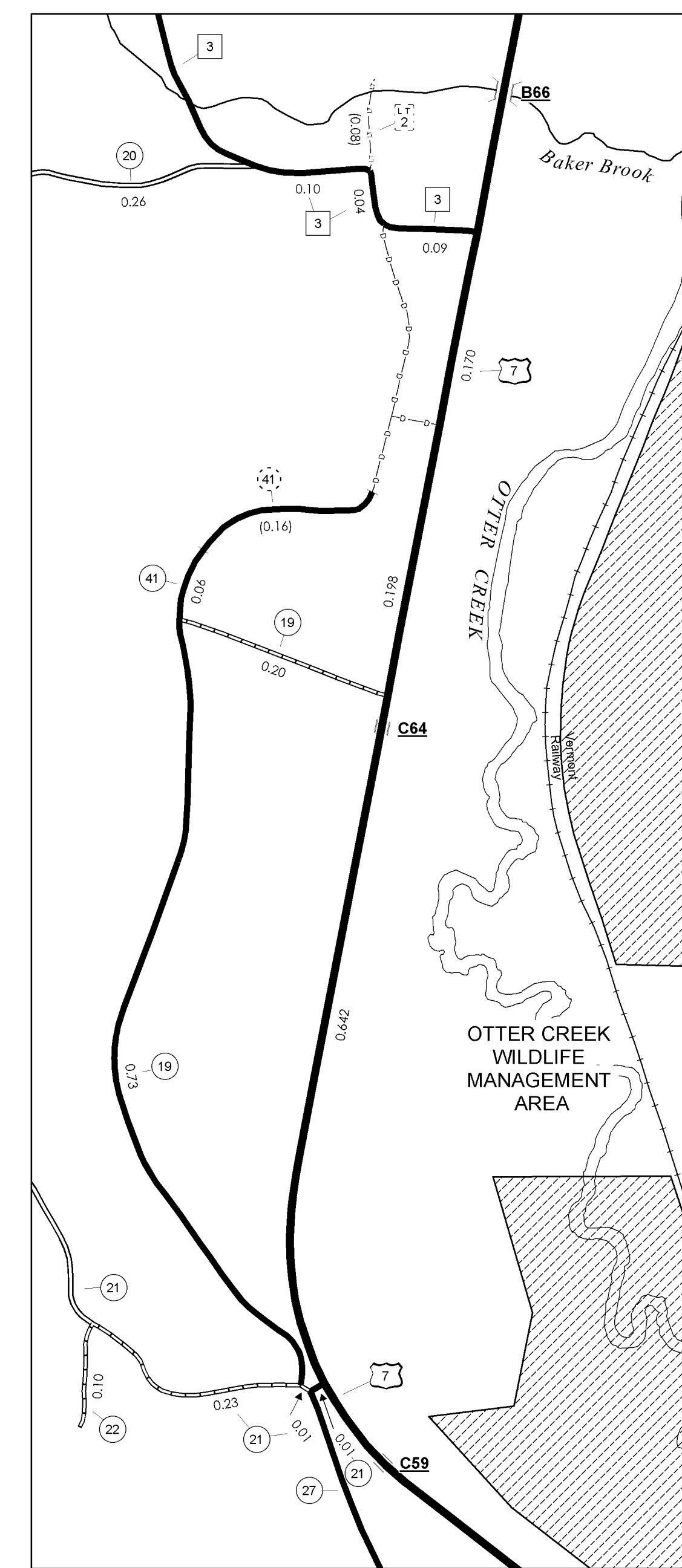
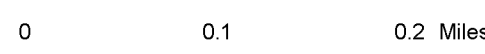
LEGAL TRAIL NO.	LENGTH IN MILES
2	(0.08)
<b>TOTAL</b>	<b>0.08</b>



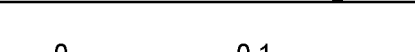
DORSET BENNINGTON COUNTY



DANBY INSET 2 SCALE 1:6336



INSET 1 SCALE 1:6336



- HIGHWAYS**
- INTERSTATE
  - U.S. ROUTE
  - STATE ROUTE
  - CLASS 1
  - CLASS 2
  - CLASS 3
  - CLASS 4
  - LEGAL TRAIL
  - INTERSTATE OR DIVIDED HIGHWAY
  - STATE - HARD SURFACE OR PAVED
  - TOWN - HARD SURFACE OR PAVED
  - GRAVEL
  - SOIL OR GRADED AND DRAINED EARTH
  - UNIMPROVED OR PRIMITIVE
  - IMPASSABLE OR UNTRAVELED
  - LEGAL TRAIL
  - DISCONTINUED
  - RAILROAD

- PUBLIC LAND
- HIGHWAY CLASS CHANGE
- POLITICAL SUBDIVISIONS**
- STATE BOUNDARY
- COUNTY BOUNDARY
- TOWN BOUNDARY
- VILLAGE BOUNDARY
- URBAN COMPACT
- OPEN WATER
- STREAM OR BROOK
- BRIDGE OR CULVERT**
- BRIDGE OR CULVERT GREATER THAN 20'
- BRIDGE OR CULVERT 6' - 20'
- B34 / C34 STATE BRIDGE OR CULVERT IDENTIFIER**
- B34 / C34 TOWN BRIDGE OR CULVERT IDENTIFIER**
- FEDERAL CLASSIFICATION IDENTIFIER**
- FAU URBAN ARTERIAL OR COLLECTOR
- MA MINOR ARTERIAL
- MJC MAJOR COLLECTOR
- MNC MINOR COLLECTOR
- PA PRINCIPAL ARTERIAL

**DISCLAIMER:**  
The untraveled highways (laid-out town highways), discontinued highways, and legal trails shown hereon are those of which the Agency of Transportation has record; others may exist.  
Highway and bridge data by the Agency of Transportation, Policy & Planning Division. All other data from the Vermont Center for Geographic Information.

Vermont State Plane Coordinate System  
North American Datum of 1983  
SPCS\_Zone\_Identifier: 4400  
Geodetic Reference System 80  
4,000-meter grid, Easting - Northing

**STRUCTURES - SURFACE WATER NOTE:**  
Town short structures (bridges or culverts from 6-feet to less than 20-feet) were not represented due to inconsistencies in the data.  
The surface waters are from the Vermont Hydrological Dataset (VHD). Only the named streams are shown.

**VERMONT GENERAL HIGHWAY MAP**  
**Town of Danby**  
RUTLAND COUNTY

Transportation District #1

Prepared by the  
Vermont Agency of Transportation  
Policy & Planning Division  
in cooperation with  
U.S. Department of Transportation  
Federal Highway Administration

Mileage as of: Feb. 10, 2008  
Map generated: September, 2008

