

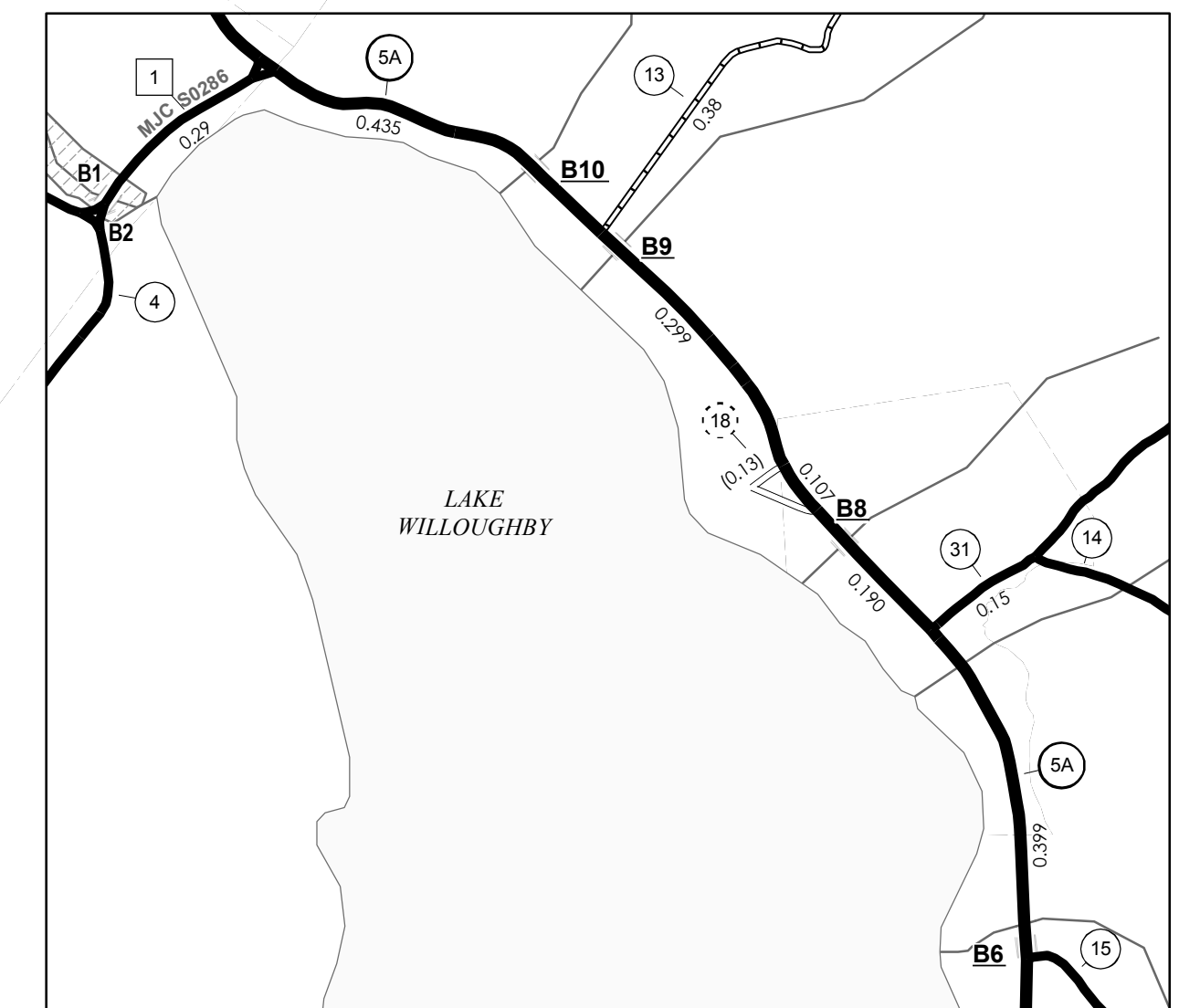
TOWN HWY. NO.	LENGTH IN MILES CLASS 3	LENGTH IN MILES CLASS 4
3	0.940	
4	2.700	
5	0.150 (0.220)	(0.050)
6	0.070	
8	1.800 (0.740)	
9	0.250 (0.750)	
10	0.100 (0.800)	
11	1.650	
12	0.120 (0.080)	
13	0.380	
14	0.300	
15	5.260	
16	0.150	
17	0.350	
18		(0.130)
19	0.500	
21	2.350	
22	1.600	
23	0.450	
24	0.500	
25	0.250	
26		(0.300)
27		(0.140)
28	0.220	
29	0.100	
30	0.500 (0.060)	
31	3.400	
34	0.380	
35	0.420	
TOTAL	24.890	3.270

* This portion of town highway is Class 3, but is functionally Class 4

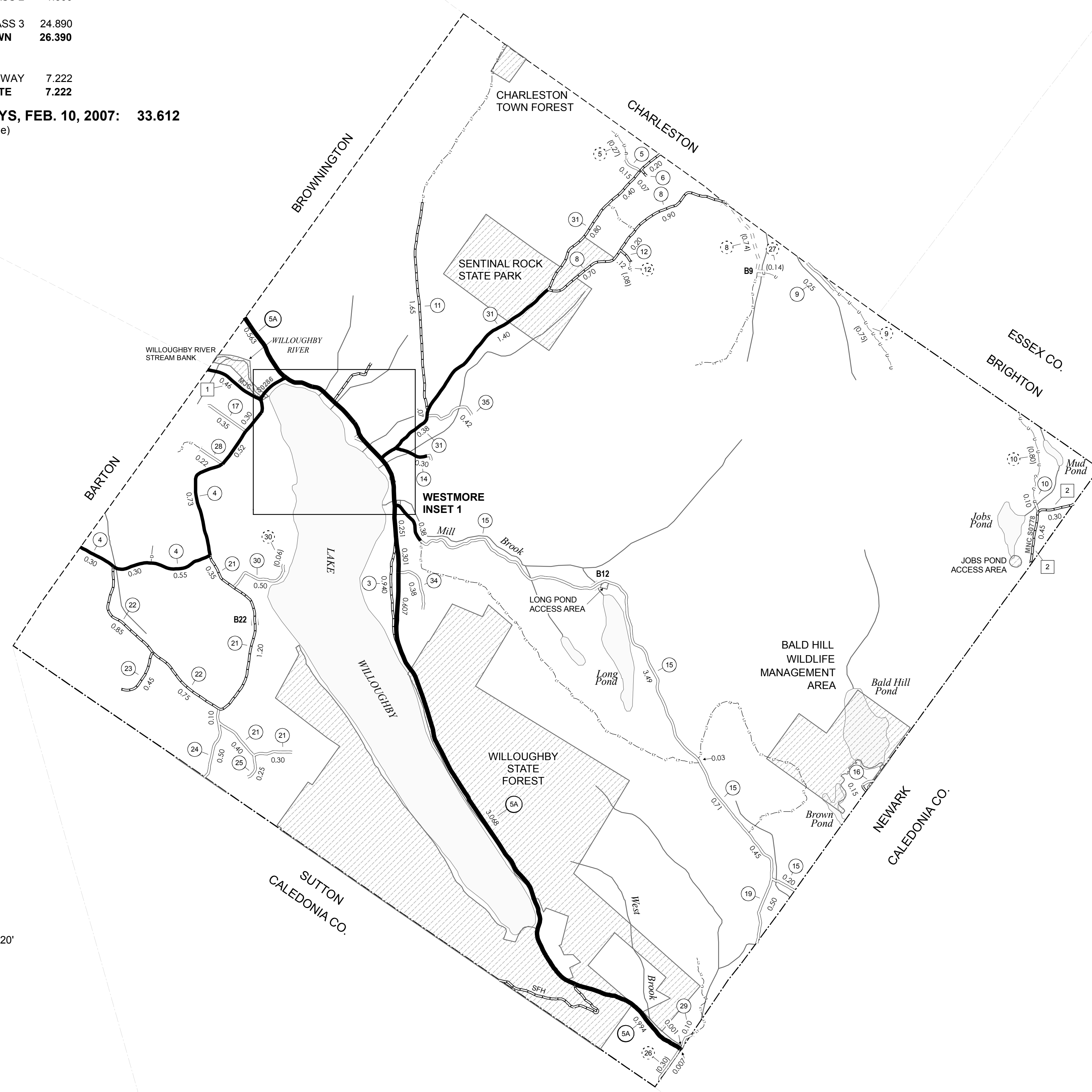
MILEAGE SUMMARY

CLASS 2			
TH-1	0.750		
TH-2	0.750		
TOTAL CLASS 2	1.500		
CLASS 3			
TOTAL CLASS 3	24.890		
TOTAL TOWN	26.390		
STATE HIGHWAY			
VT-5A	7.222		
TOTAL STATE HIGHWAY	7.222		
TOTAL STATE	7.222		

TOTAL, TRAVELED HIGHWAYS, FEB. 10, 2007: 33.612
(Excludes Class 4 and Legal Trail Mileage)



WESTMORE INSET 1 SCALE 1:12672



- HIGHWAYS**
- INTERSTATE
 - U.S. ROUTE
 - STATE ROUTE
 - CLASS 1
 - CLASS 2
 - CLASS 3
 - CLASS 4
 - LEGAL TRAIL
 - INTERSTATE OR DIVIDED HIGHWAY
 - STATE - HARD SURFACE OR PAVED
 - TOWN - HARD SURFACE OR PAVED
 - GRAVEL
 - SOIL OR GRADED AND DRAINED EARTH
 - UNIMPROVED OR PRIMITIVE
 - IMPASSABLE OR UNTRAVELED
 - LEGAL TRAIL
 - DISCONTINUED
 - HIGHWAY CLASS CHANGE
 - RAILROAD

- PUBLIC LAND**
- POLITICAL SUBDIVISIONS**
- STATE BOUNDARY
 - COUNTY BOUNDARY
 - TOWN BOUNDARY
 - VILLAGE BOUNDARY
 - URBAN COMPACT BOUNDARY
- WATER BODIES**
- OPEN WATER
 - SWAMP
 - STREAM OR BROOK
- BRIDGE OR CULVERT**
- BRIDGE OR CULVERT GREATER THAN 20'
 - BRIDGE OR CULVERT 6' - 20'
- B34 STATE BRIDGE IDENTIFIER**
- B34 TOWN BRIDGE IDENTIFIER**

- FEDERAL CLASSIFICATION IDENTIFIER**
- FAU - URBAN ARTERIAL OR COLLECTOR
 - MA - MINOR ARTERIAL
 - MJC - MAJOR COLLECTOR
 - MNC - MINOR COLLECTOR
 - PA - PRINCIPAL ARTERIAL

DISCLAIMER:
The untraveled highways (laid-out town highways), discontinued highways, and legal trails shown hereon are those of which the Agency of Transportation has record; others may exist.
Highway and bridge data by the Agency of Transportation, Policy & Planning Division. All other data from the Vermont Center for Geographic Information.

Vermont State Plane Coordinate System
North American Datum of 1983
SPCS_Zone_Identifier: 4400
Geodetic Reference System 80
4,000-meter grid, Easting - Northing

VERMONT
GENERAL HIGHWAY MAP
Town of Westmore
ORLEANS COUNTY

Transportation District #9

Prepared by the
Vermont Agency of Transportation
Policy & Planning Division
in cooperation with
U.S. Department of Transportation
Federal Highway Administration

Mileage as of: Feb. 10, 2007
Map generated: October, 2007

