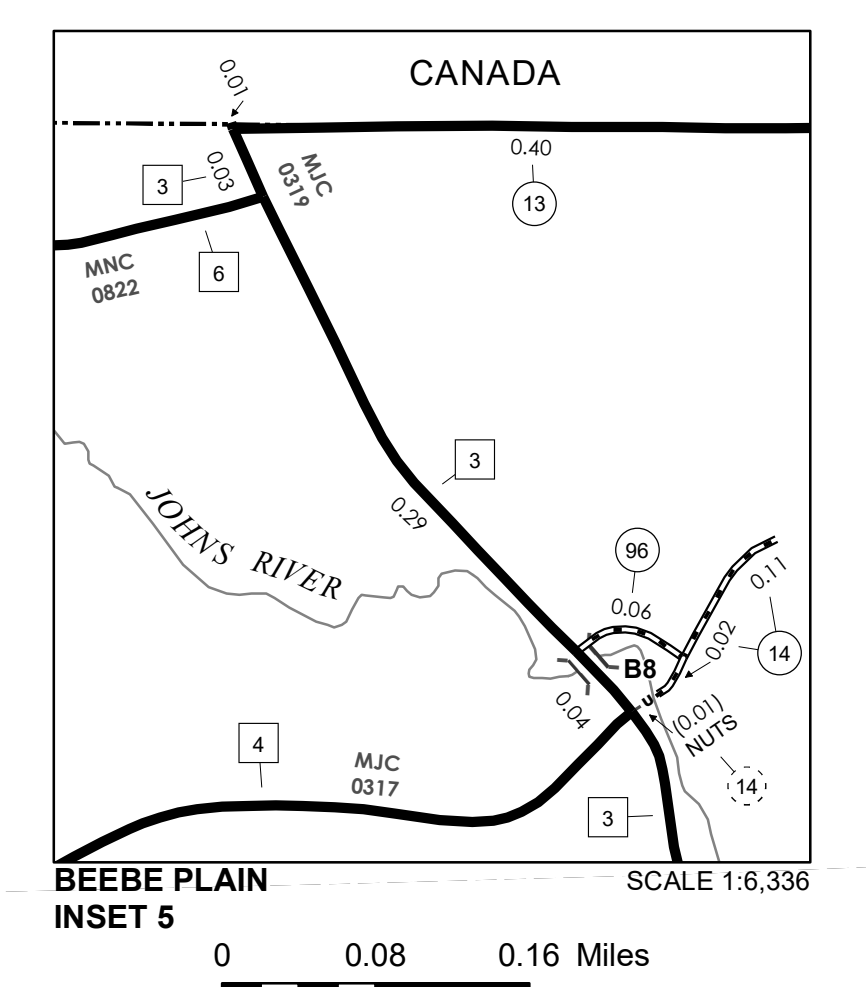
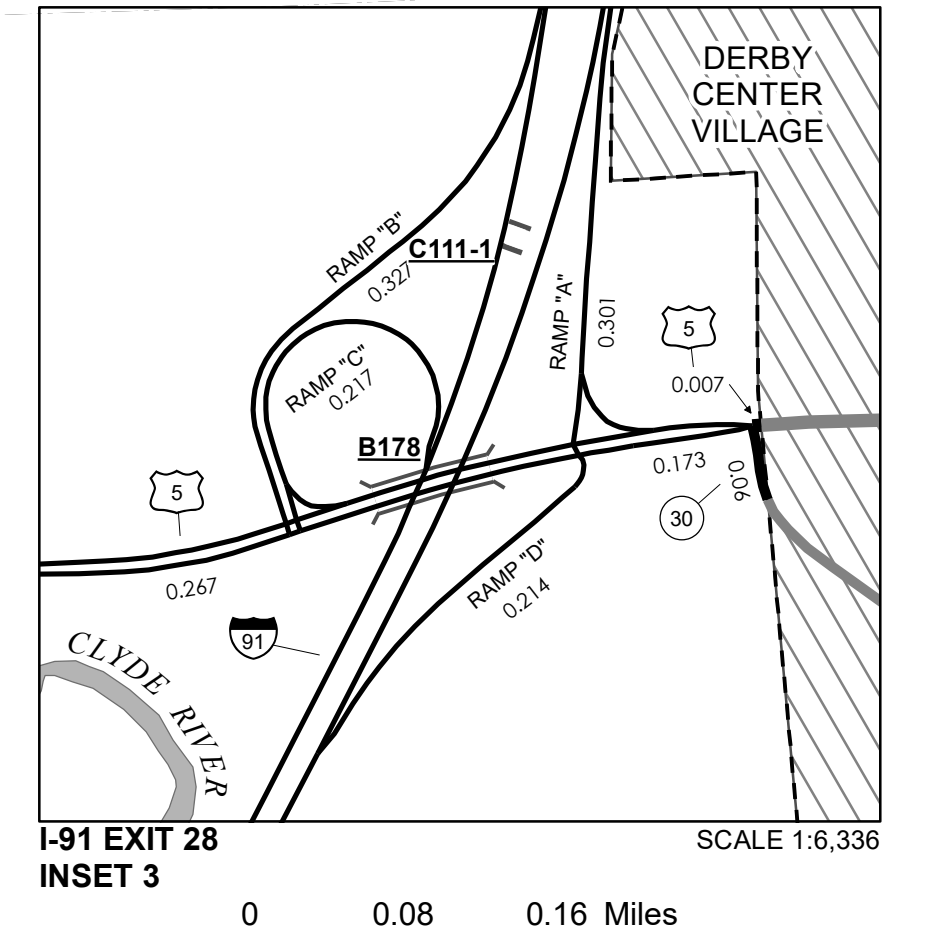
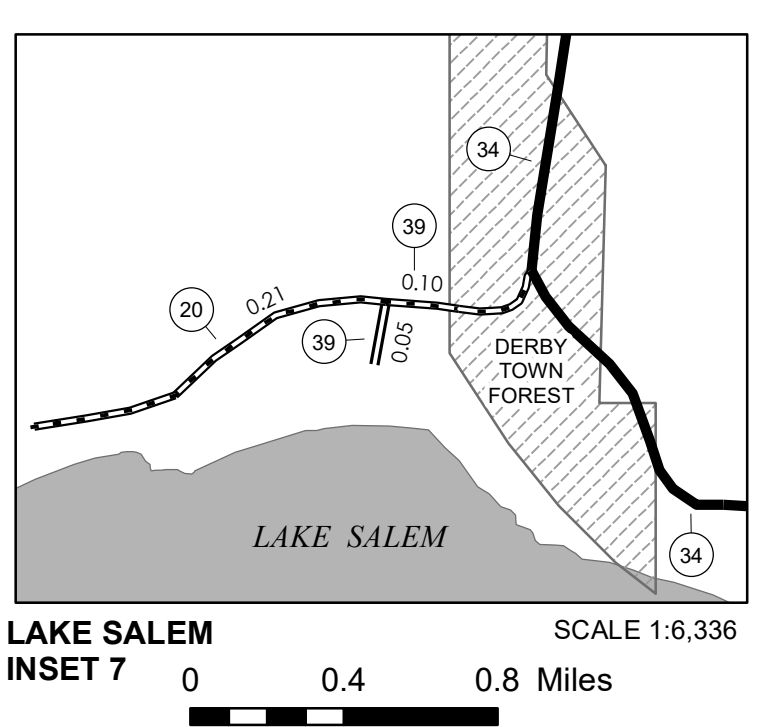
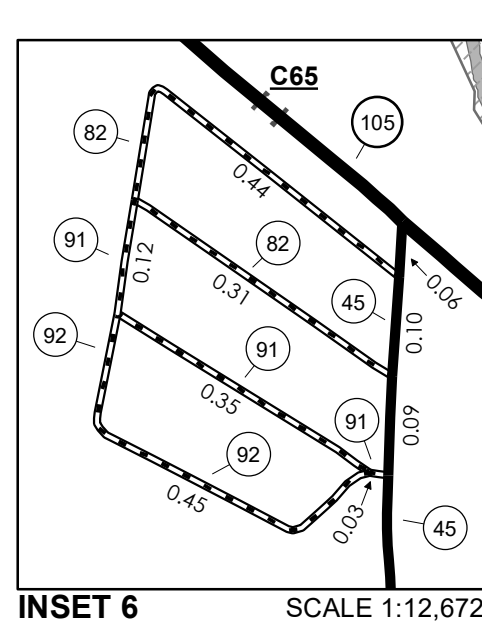
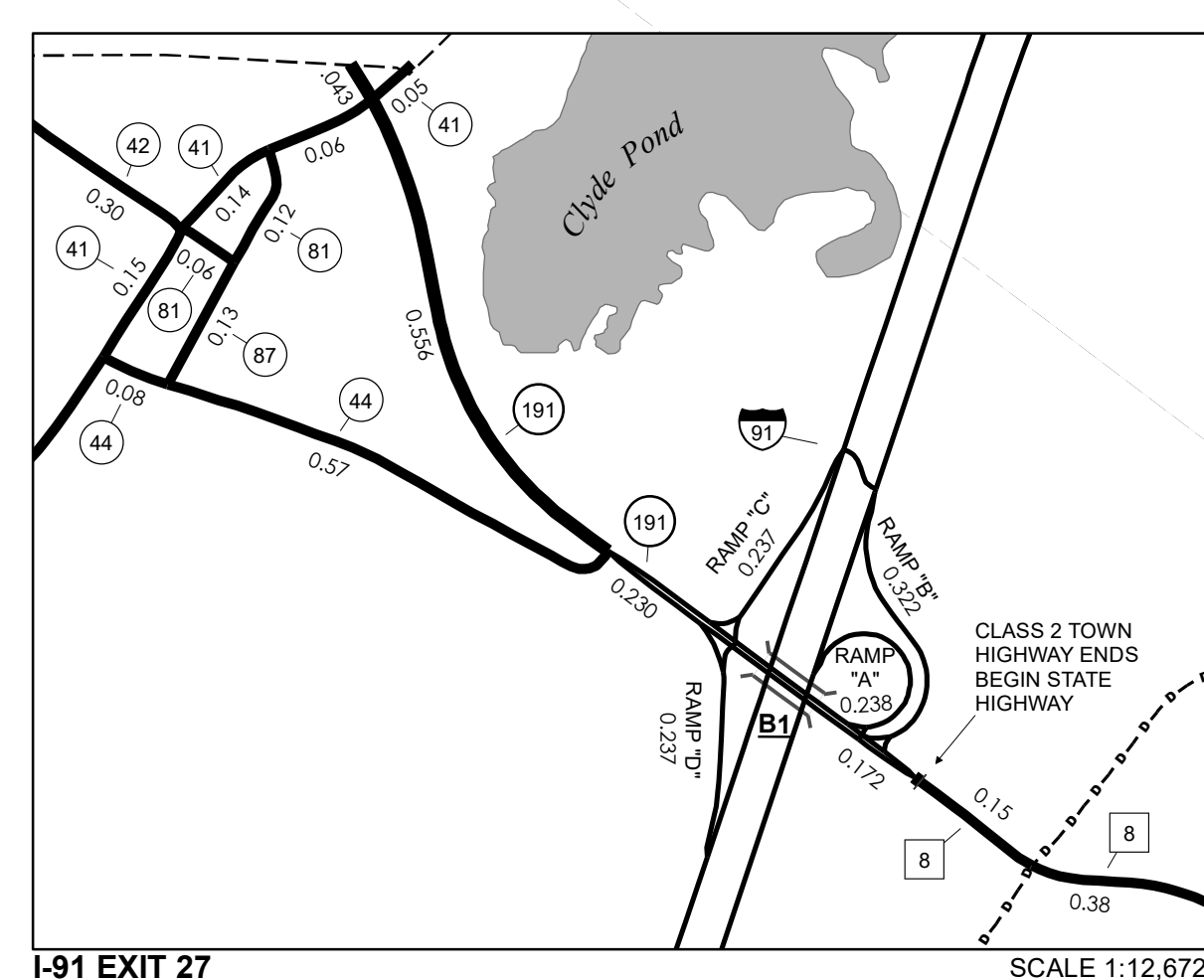
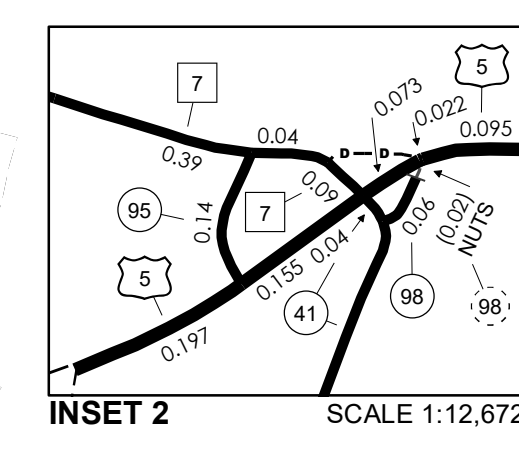
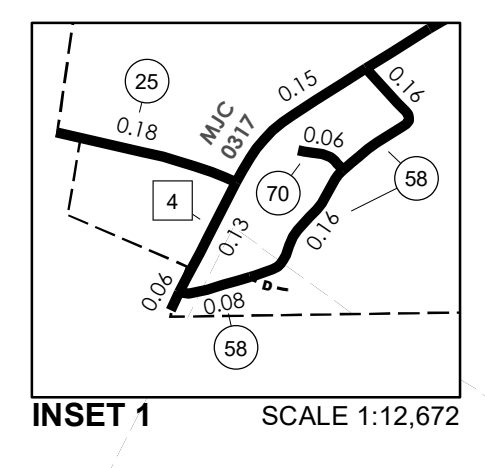


TOWN HWY. No.	LENGTH IN MILES CLASS 3	CLASS 4
6	0.14	
8	0.16	
11	0.20	
12	0.55	
13	0.40	
14	0.13	
16	0.50	(0.51)
17	1.77	
18	1.68	
19	0.07	
20	0.21	
21	0.75	
22	5.98	
23	0.95	
24	0.40	
25	0.18	
27	1.50	
28	0.60	
29	0.15	
30	0.85	
31	0.95	
33	0.90	
34	0.95	
35	1.30	
36	0.57	
37	0.18	
38	2.30	(0.26)
39	0.15	
40	0.80	
41	4.21	
42	0.30	
44	0.65	
45	4.35	
46	0.10	
47	0.70	(0.40)
49	0.80	
50	1.15	
51	0.05	
52	0.15	
53	1.10	
54	3.99	(0.10)
55	0.15	(0.36)
57	0.15	
58	0.40	
59	0.61	
60	0.52	
61	0.50	
63	0.46	
64	0.04	
65	0.17	
66	1.62	
67	0.35	
69	0.17	
70	0.06	
78	0.12	
81	0.18	
82	0.75	
83	0.21	
84	0.10	
86	0.58	
87	0.13	
88	0.24	
89	0.32	
90	0.43	
91	0.50	
92	0.45	
93	0.08	
94	0.37	
95	0.14	
96	0.06	
97	0.08	
98	0.06	
99	0.33	
100	0.75	
<b>TOTAL</b>	<b>54.90</b>	<b>1.63</b>

**MILEAGE SUMMARY**

CLASS	LENGTH IN MILES
CLASS 2	
TH-1	2.240
TH-2	1.390
TH-3	3.160
TH-4	4.780
TH-5	4.660
TH-6	4.320
TH-7	1.300
TH-8	1.130
<b>TOTAL CLASS 2</b>	<b>22.980</b>
CLASS 3	
<b>TOTAL CLASS 3</b>	<b>54.90</b>
<b>TOTAL TOWN</b>	<b>77.880</b>
STATE HIGHWAY	
VT-105	4.839
VT-111	3.775
VT-191	1.001
<b>TOTAL STATE HIGHWAY</b>	<b>9.615</b>
US HIGHWAY	
US-5	5.118
<b>TOTAL US HIGHWAY</b>	<b>5.118</b>
<b>TOTAL STATE</b>	<b>14.733</b>
INTERSTATE	
I-91	8.533
<b>TOTAL INTERSTATE</b>	<b>8.533</b>
INTERSTATE - Ramps	
I-91	2.211
<b>TOTAL INTERSTATE - Ramps</b>	<b>2.211</b>
<b>TOTAL INTERSTATE</b>	<b>10.744</b>

**TOTAL, TRAVELED HIGHWAYS, FEB. 10, 2026: 103.357**  
(Excludes Class 4 and Legal Trail Mileage)



**LEGAL TRAIL**

TRAIL No.	LENGTH IN MILES LEGAL TRAIL
1	(0.17)
2	(1.79)
3	(0.77)
4	(1.05)
5	(1.12)
6	(0.70)
7	(0.01)
8	(0.95)
10	(0.60)
11	(0.20)
12	(0.45)
13	(0.64)
<b>TOTAL</b>	<b>8.45</b>

**TOWN HWY. No.**

LENGTH IN MILES "NOT UP TO STANDARD"	
7	(0.21)
9	(0.05)
14	(0.01)
59	(0.35)
98	(0.02)
<b>TOTAL</b>	<b>0.64</b>

\* The sections of the town highways listed above are legally Class 3, but have been deemed "Not Up To Standard" and are functionally Class 4 town highways

- HIGHWAYS**
- INTERSTATE OR DIVIDED HIGHWAY
  - STATE - HARD SURFACE OR PAVED
  - TOWN - HARD SURFACE OR PAVED
  - GRAVEL
  - SOIL OR GRADED AND DRAINED EARTH
  - UNIMPROVED OR PRIMITIVE
  - IMPASSABLE OR UNTRAVELED
  - LEGAL TRAIL
  - DISCONTINUED
  - HIGHWAY CLASS CHANGE
  - RAILROAD
  - INACTIVE RAILROAD
  - PUBLIC LAND - NATIONAL FOREST
  - PUBLIC LAND - STATE/MUNICIPAL
  - NFR NATIONAL FOREST ROAD
  - ACE ARMY CORPS OF ENGINEERS
  - USGH UNITED STATES GOV. HWY.

- POLITICAL SUBDIVISIONS**
- STATE BOUNDARY
  - COUNTY BOUNDARY
  - TOWN BOUNDARY
  - VILLAGE BOUNDARY
  - URBAN COMPACT BOUNDARY
  - WATER BODY
  - STREAM OR BROOK
- BRIDGE OR CULVERT**
- BRIDGE OR CULVERT > 20'
  - BRIDGE OR CULVERT 6' - 20'
  - BIKE PATH STRUCTURE
  - VT CULVERTS BRIDGE
  - VT CULVERTS CULVERT > 6'
- FEDERAL CLASSIFICATION IDENTIFIER**
- MA MINOR ARTERIAL
  - MJC MAJOR COLLECTOR
  - MNC MINOR COLLECTOR
  - PA PRINCIPAL ARTERIAL
- B34 / C34 STATE BRIDGE OR CULVERT IDENTIFIER**  
**B34 / C34 TOWN BRIDGE OR CULVERT IDENTIFIER**

**DISCLAIMER:**  
The untraveled highways (laid-out town highways), discontinued highways, and legal trails hereon are those of which the Agency of Transportation has record; others may exist.

Highway and bridge data by the Agency of Transportation. Town short structures drawn from the VT CULVERTS (formerly VOBCIT) online database. All other data from the Vermont Open Geodata Portal. Only named streams shown.

Accessibility Statement: The Agency of Transportation is committed to ensuring accessibility and digital accessibility for all. If you need language assistance, reasonable accommodation, or alternative format, please email johnathan.croft@vermont.gov.

**VERMONT GENERAL HIGHWAY MAP**  
**Town of Derby**  
ORLEANS COUNTY  
Transportation District #9

Prepared by the  
Vermont Agency of Transportation  
Highway Division  
in cooperation with  
U.S. Department of Transportation  
Federal Highway Administration

Mileage as of February 10, 2026  
Map prepared May 18, 2026  
SCALE 1:31,680

0.5 0 0.5 1 1.5 2 Miles  
0.5 0 0.5 1 1.5 2 Kilometers