

| TOWN HWY. No. | LENGTH IN MILES CLASS 3 | CLASS 4     |
|---------------|-------------------------|-------------|
| 6             | 0.14                    |             |
| 8             | 0.16                    |             |
| 11            | 0.20                    |             |
| 12            | 0.55                    |             |
| 13            | 0.40                    |             |
| 14            | 0.13                    |             |
| 16            | 0.50                    | (0.51)      |
| 17            | 1.77                    |             |
| 18            | 1.68                    |             |
| 19            | 0.07                    |             |
| 20            | 0.21                    |             |
| 21            | 0.75                    |             |
| 22            | 5.98                    |             |
| 23            | 0.95                    |             |
| 24            | 0.40                    |             |
| 25            | 0.18                    |             |
| 27            | 1.50                    |             |
| 28            | 0.60                    |             |
| 29            | 0.15                    |             |
| 30            | 0.85                    |             |
| 31            | 0.95                    |             |
| 33            | 0.90                    |             |
| 34            | 1.02                    |             |
| 35            | 1.30                    |             |
| 36            | 0.57                    |             |
| 37            | 0.18                    | (0.75)      |
| 38            | 2.30                    |             |
| 39            | 0.15                    |             |
| 40            | 0.80                    |             |
| 41            | 4.21                    |             |
| 42            | 0.30                    |             |
| 44            | 0.65                    |             |
| 45            | 4.35                    |             |
| 46            | 0.10                    |             |
| 47            | 0.70                    | (0.40)      |
| 49            | 0.80                    |             |
| 50            | 1.15                    |             |
| 51            | 0.05                    |             |
| 52            | 0.15                    |             |
| 53            | 1.10                    |             |
| 54            | 3.99                    | (0.36)      |
| 55            | 0.10                    |             |
| 56            | 1.15                    |             |
| 57            | 0.15                    |             |
| 58            | 0.40                    |             |
| 59            | 0.61                    |             |
| 60            | 0.52                    |             |
| 61            | 0.50                    |             |
| 62            | 0.05                    |             |
| 63            | 0.46                    |             |
| 64            | 0.04                    |             |
| 65            | 0.17                    |             |
| 66            | 1.62                    |             |
| 67            | 0.35                    |             |
| 69            | 0.17                    |             |
| 70            | 0.06                    |             |
| 78            | 0.12                    |             |
| 81            | 0.18                    |             |
| 82            | 0.75                    |             |
| 83            | 0.21                    |             |
| 84            | 0.10                    |             |
| 86            | 0.58                    |             |
| 87            | 0.13                    |             |
| 88            | 0.24                    |             |
| 89            | 0.32                    |             |
| 90            | 0.43                    |             |
| 91            | 0.50                    |             |
| 92            | 0.45                    |             |
| 93            | 0.08                    |             |
| 94            | 0.37                    |             |
| 95            | 0.14                    |             |
| 96            | 0.06                    |             |
| 97            | 0.08                    |             |
| 98            | 0.06                    |             |
| 99            | 0.33                    |             |
| 100           | 0.75                    |             |
| <b>TOTAL</b>  | <b>55.12</b>            | <b>2.02</b> |

**MILEAGE SUMMARY**

| CLASS 2              | CLASS 3 | TOTAL CLASS 2 | TOTAL CLASS 3 | TOTAL TOWN |
|----------------------|---------|---------------|---------------|------------|
| TH-1                 |         | 2.240         |               |            |
| TH-2                 |         | 1.390         |               |            |
| TH-3                 |         | 3.160         |               |            |
| TH-4                 |         | 4.780         |               |            |
| TH-5                 |         | 4.660         |               |            |
| TH-6                 |         | 4.320         |               |            |
| TH-7                 |         | 1.300         |               |            |
| TH-8                 |         | 1.130         |               |            |
| <b>TOTAL CLASS 2</b> |         | <b>22.980</b> |               |            |
|                      |         |               | <b>55.12</b>  |            |
| <b>TOTAL TOWN</b>    |         |               | <b>78.100</b> |            |

| STATE HIGHWAY              | TOTAL STATE HIGHWAY |
|----------------------------|---------------------|
| VT-105                     | 4.839               |
| VT-111                     | 3.775               |
| VT-191                     | 1.001               |
| <b>TOTAL STATE HIGHWAY</b> | <b>9.615</b>        |

| US HIGHWAY              | TOTAL US HIGHWAY |
|-------------------------|------------------|
| US-5                    | 5.118            |
| <b>TOTAL US HIGHWAY</b> | <b>5.118</b>     |

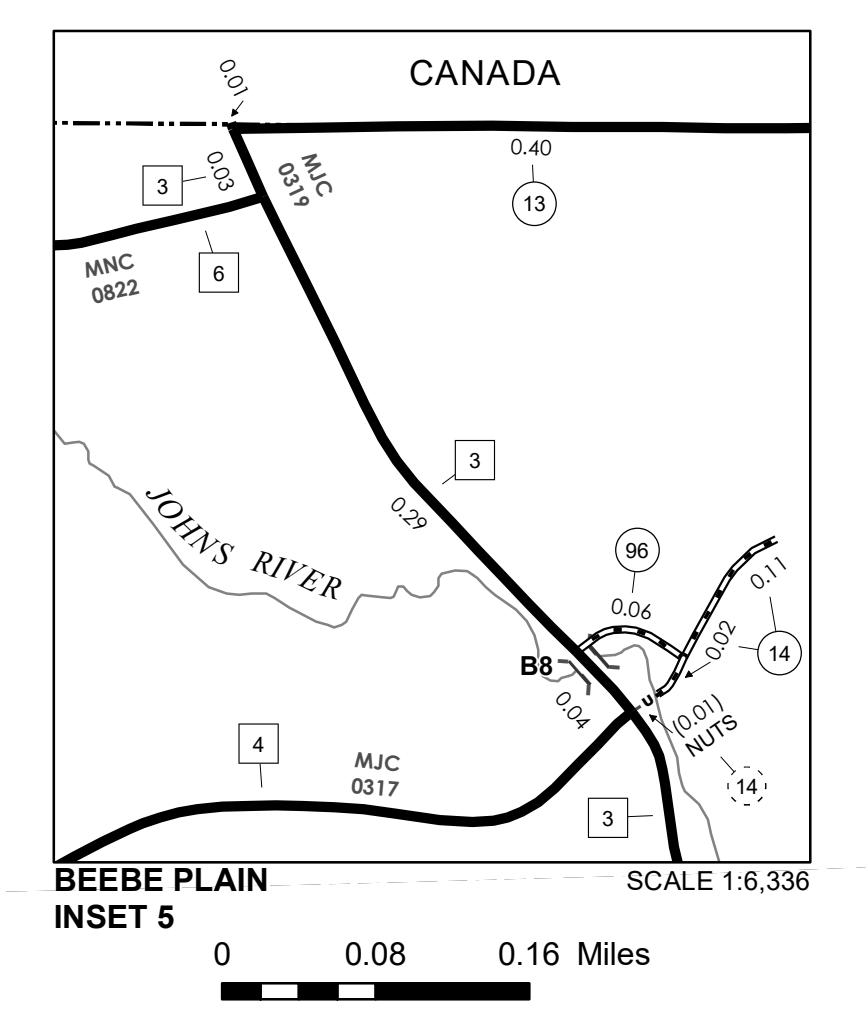
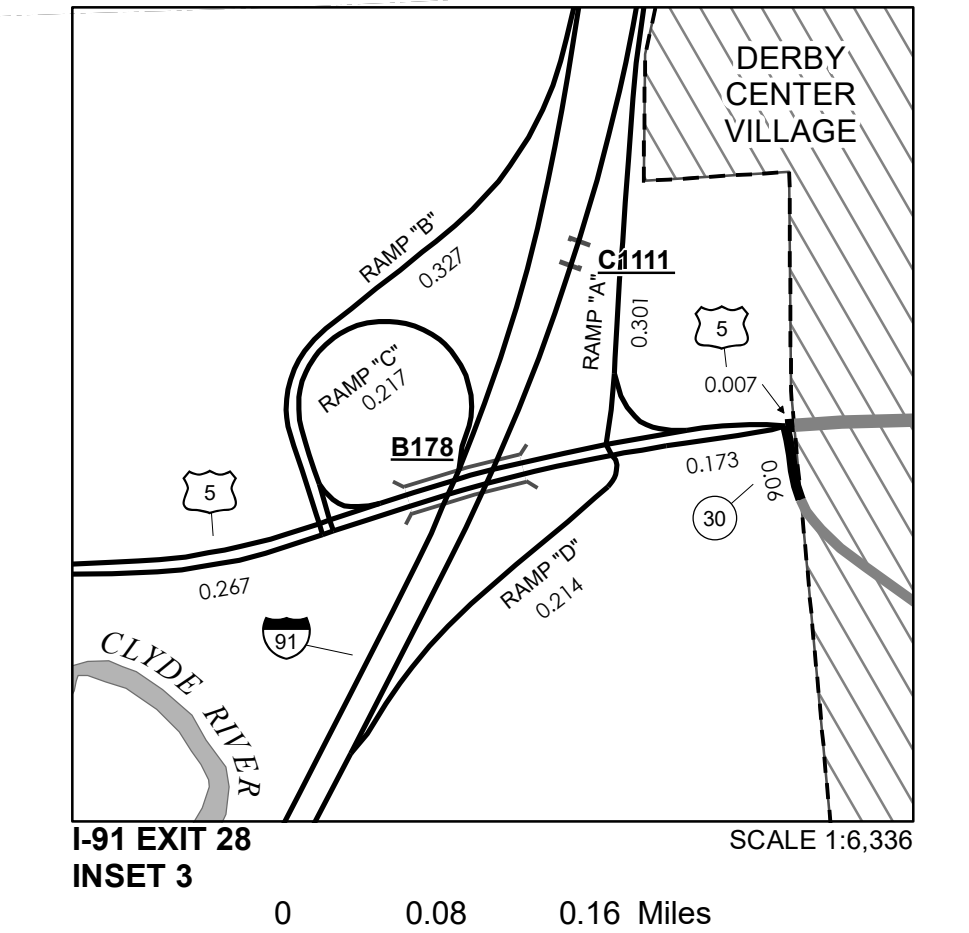
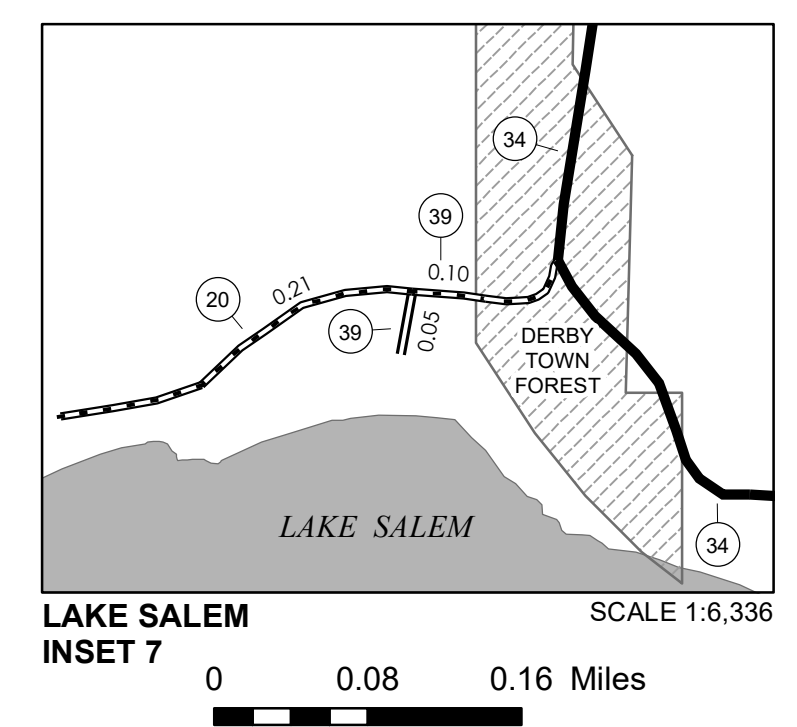
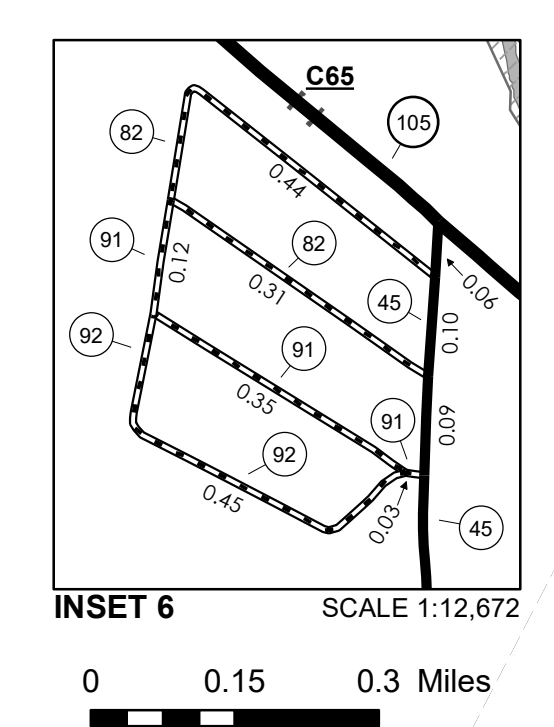
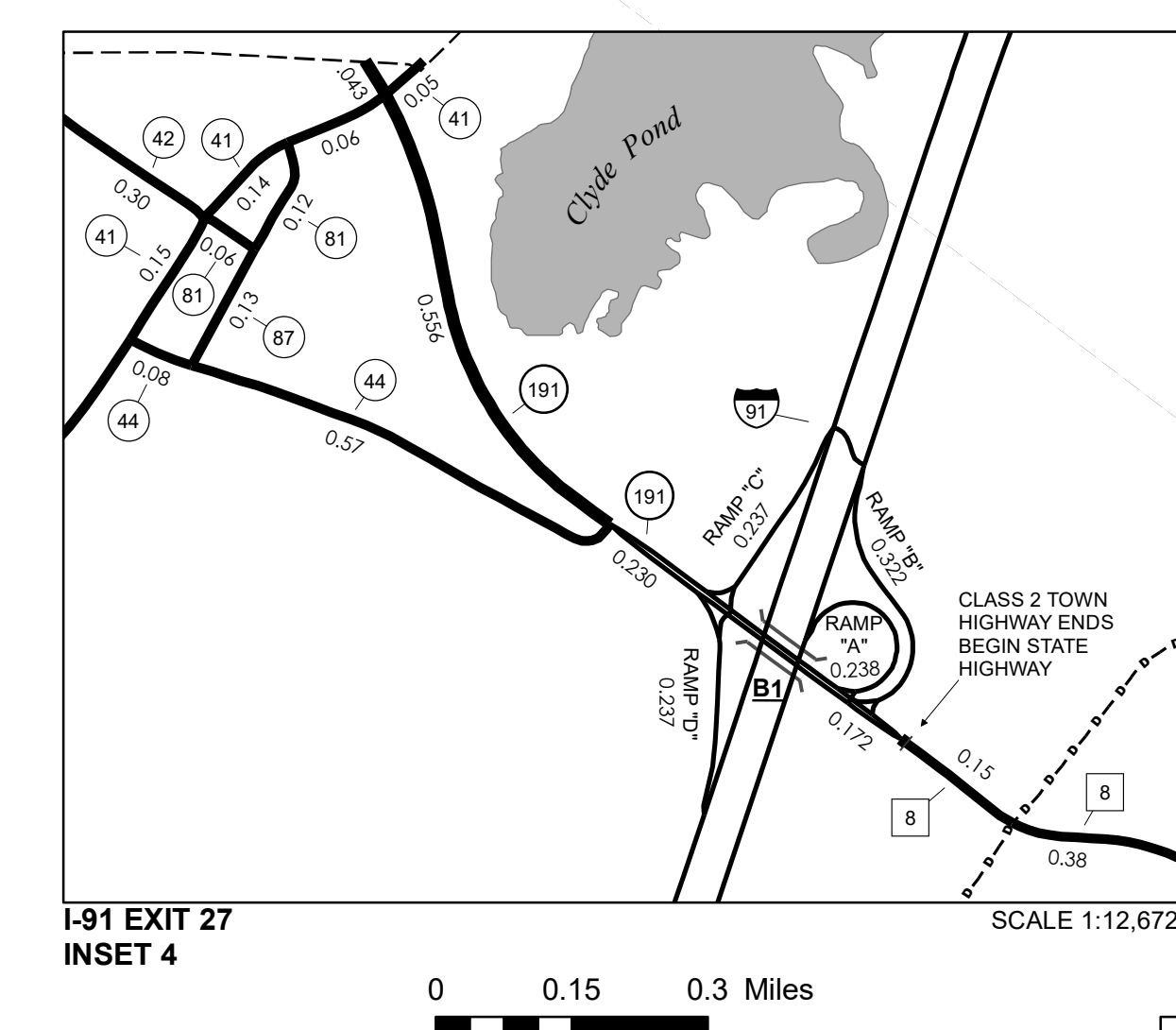
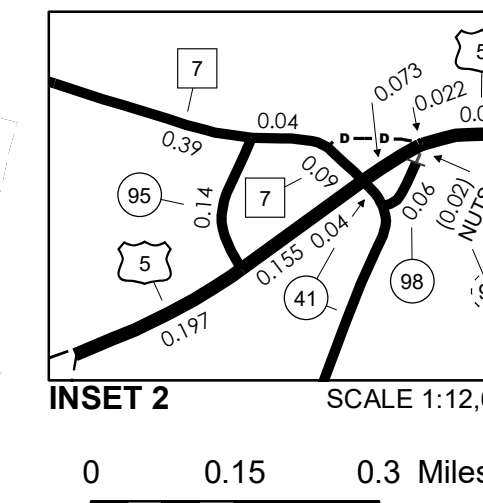
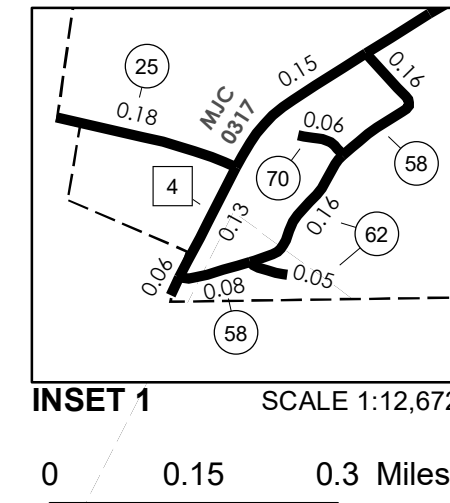
| INTERSTATE              | TOTAL INTERSTATE |
|-------------------------|------------------|
| I-91                    | 8.533            |
| <b>TOTAL INTERSTATE</b> | <b>8.533</b>     |

| INTERSTATE - Ramps              | TOTAL INTERSTATE - Ramps |
|---------------------------------|--------------------------|
| I-91                            | 2.211                    |
| <b>TOTAL INTERSTATE - Ramps</b> | <b>2.211</b>             |

**TOTAL, TRAVELED HIGHWAYS, FEB. 10, 2023: 103.577**  
(Excludes Class 4 and Legal Trail Mileage)



**LEGAL TRAIL**

| LEGAL TRAIL No. | LENGTH IN MILES LEGAL TRAIL |
|-----------------|-----------------------------|
| 1               | (0.17)                      |
| 2               | (1.79)                      |
| 3               | (0.77)                      |
| 4               | (0.56)                      |
| 5               | (1.12)                      |
| 6               | (0.70)                      |
| 7               | (0.01)                      |
| 8               | (0.95)                      |
| 10              | (0.60)                      |
| 11              | (0.20)                      |
| 12              | (0.45)                      |
| 13              | (0.64)                      |
| <b>TOTAL</b>    | <b>7.96</b>                 |

**TOWN HWY. No.**

| LENGTH IN MILES "NOT UP TO STANDARD" |             |
|--------------------------------------|-------------|
| 7                                    | (0.21)      |
| 9                                    | (0.05)      |
| 14                                   | (0.01)      |
| 59                                   | (0.35)      |
| 98                                   | (0.02)      |
| <b>TOTAL</b>                         | <b>0.64</b> |

\* The sections of the town highways listed above are legally Class 3, but have been deemed "Not Up To Standard" and are functionally Class 4 Town Highways

- HIGHWAYS**
- INTERSTATE OR DIVIDED HIGHWAY
  - STATE - HARD SURFACE OR PAVED
  - TOWN - HARD SURFACE OR PAVED
  - GRAVEL
  - SOIL OR GRADED AND DRAINED EARTH
  - UNIMPROVED OR PRIMITIVE
  - IMPASSABLE OR UNTRAVELED
  - LEGAL TRAIL
  - DISCONTINUED
  - HIGHWAY CLASS CHANGE
  - RAILROAD
  - INACTIVE RAILROAD
  - PUBLIC LAND - NATIONAL FOREST
  - PUBLIC LAND - STATE/MUNICIPAL
  - NATIONAL FOREST ROAD
  - USGH UNITED STATES GOV. HWY.

- POLITICAL SUBDIVISIONS**
- STATE BOUNDARY
  - COUNTY BOUNDARY
  - TOWN BOUNDARY
  - VILLAGE BOUNDARY
  - URBAN COMPACT BOUNDARY
  - WATER BODY
  - STREAM OR BROOK
- BRIDGE OR CULVERT**
- BRIDGE OR CULVERT > 20'
  - BRIDGE OR CULVERT 6' - 20'
  - BIKE PATH STRUCTURE
  - VT CULVERT'S BRIDGE
  - VT CULVERT'S CULVERT > 6'
  - STATE BRIDGE OR CULVERT IDENTIFIER
  - TOWN BRIDGE OR CULVERT IDENTIFIER
- FEDERAL CLASSIFICATION IDENTIFIER**
- MA MINOR ARTERIAL
  - MJC MAJOR COLLECTOR
  - MNC MINOR COLLECTOR
  - PA PRINCIPAL ARTERIAL

**DISCLAIMER:**  
The untraveled highways (laid-out town highways), discontinued highways, and legal trails herein are those of which the Agency of Transportation has record; others may exist.

Highway and bridge data by the Agency of Transportation. Town short structures drawn from the VTCULVERTS (formerly VOBCTI) online database. All other data from the Vermont Open Geodata Portal. Only named streams shown.

**VERMONT GENERAL HIGHWAY MAP**  
**Town of Derby**  
ORLEANS COUNTY  
Transportation District #9

Prepared by the  
Vermont Agency of Transportation  
Division of Policy, Planning and Intermodal Development  
in cooperation with  
U.S. Department of Transportation  
Federal Highway Administration

Mileage as of February 10, 2023  
Map prepared June 05, 2023  
SCALE 1:31,680