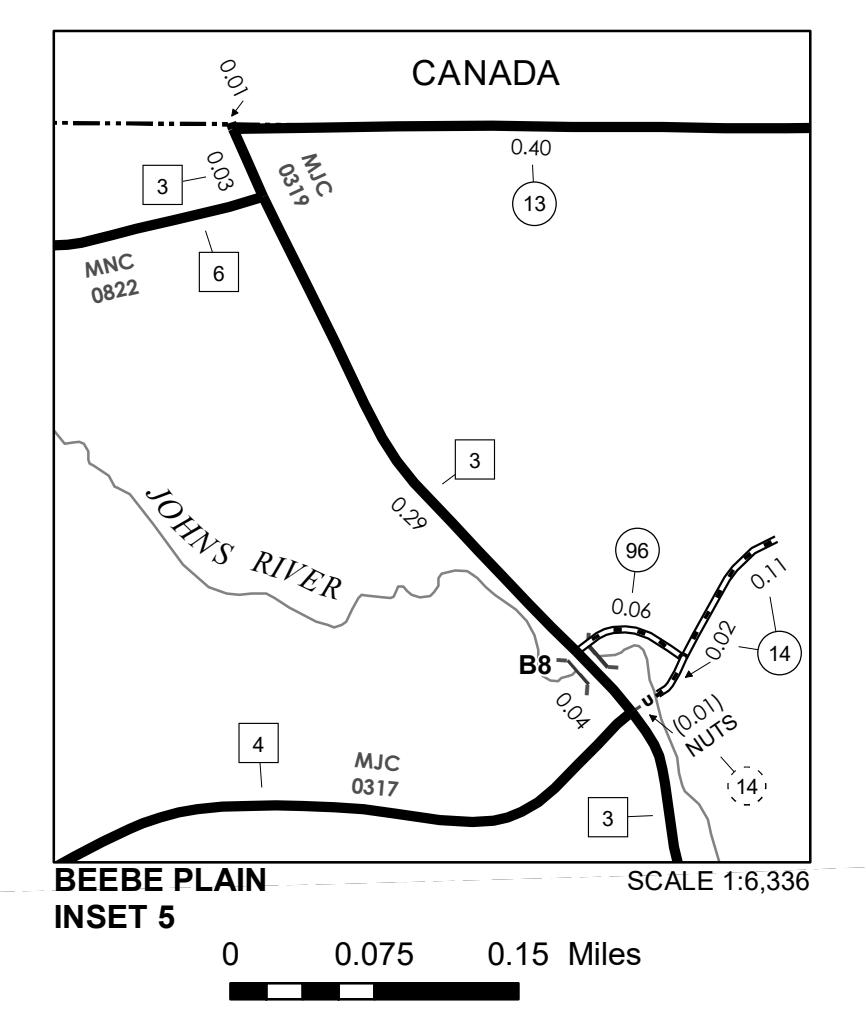
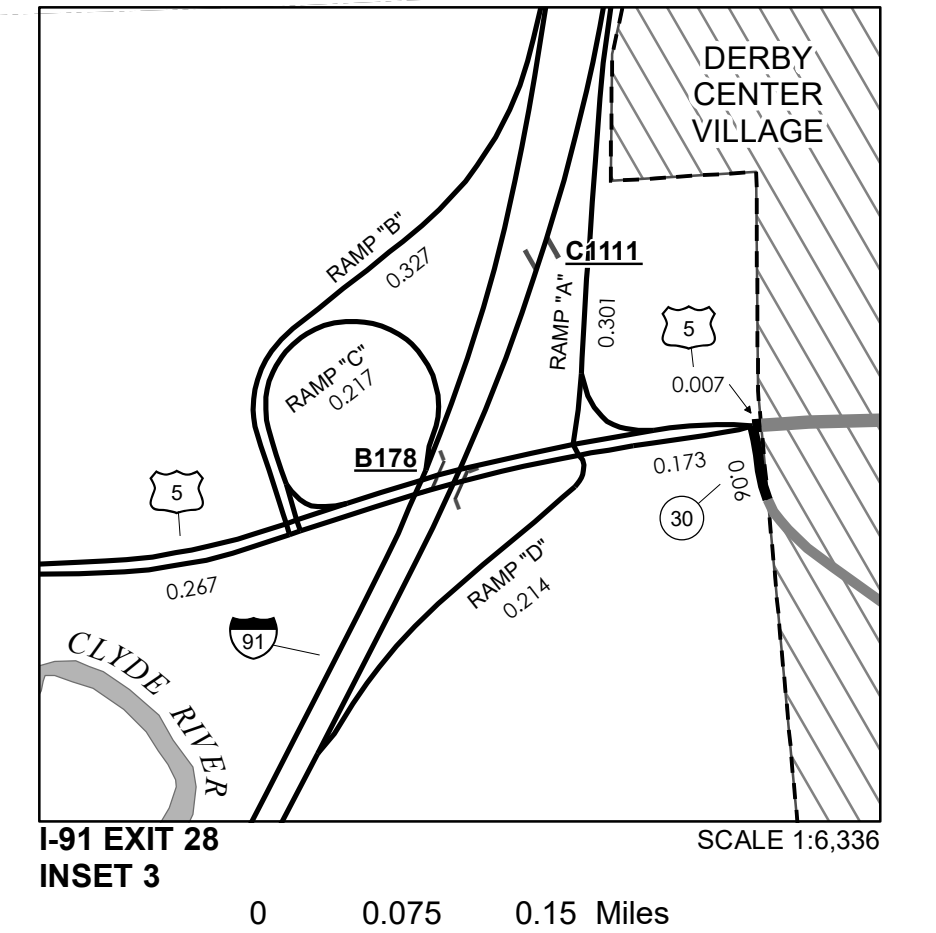
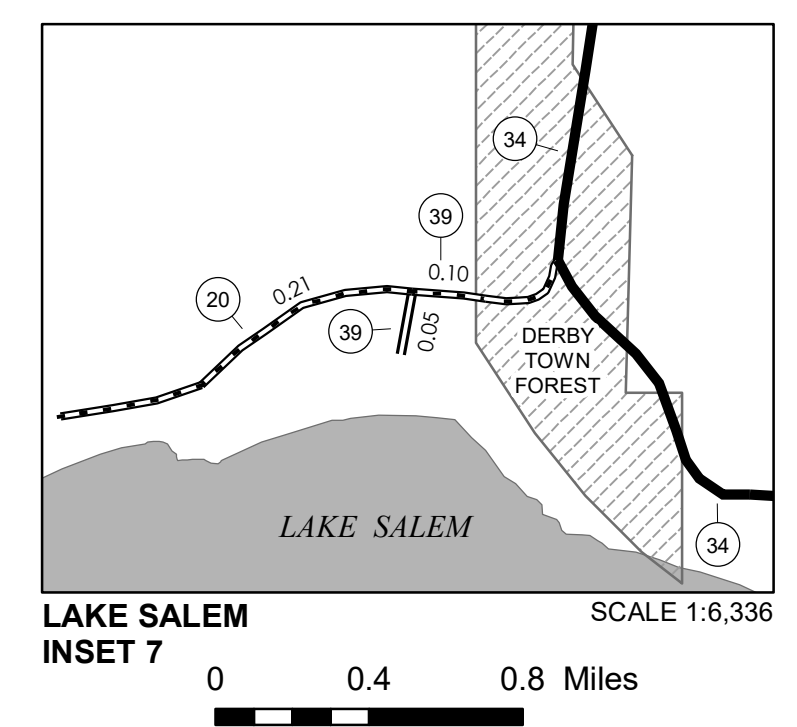
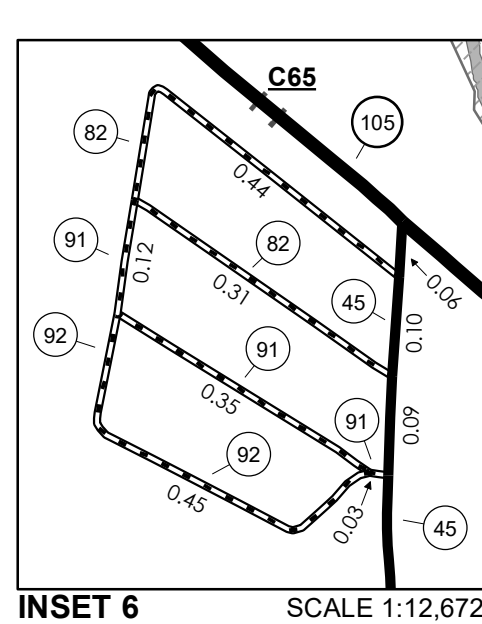
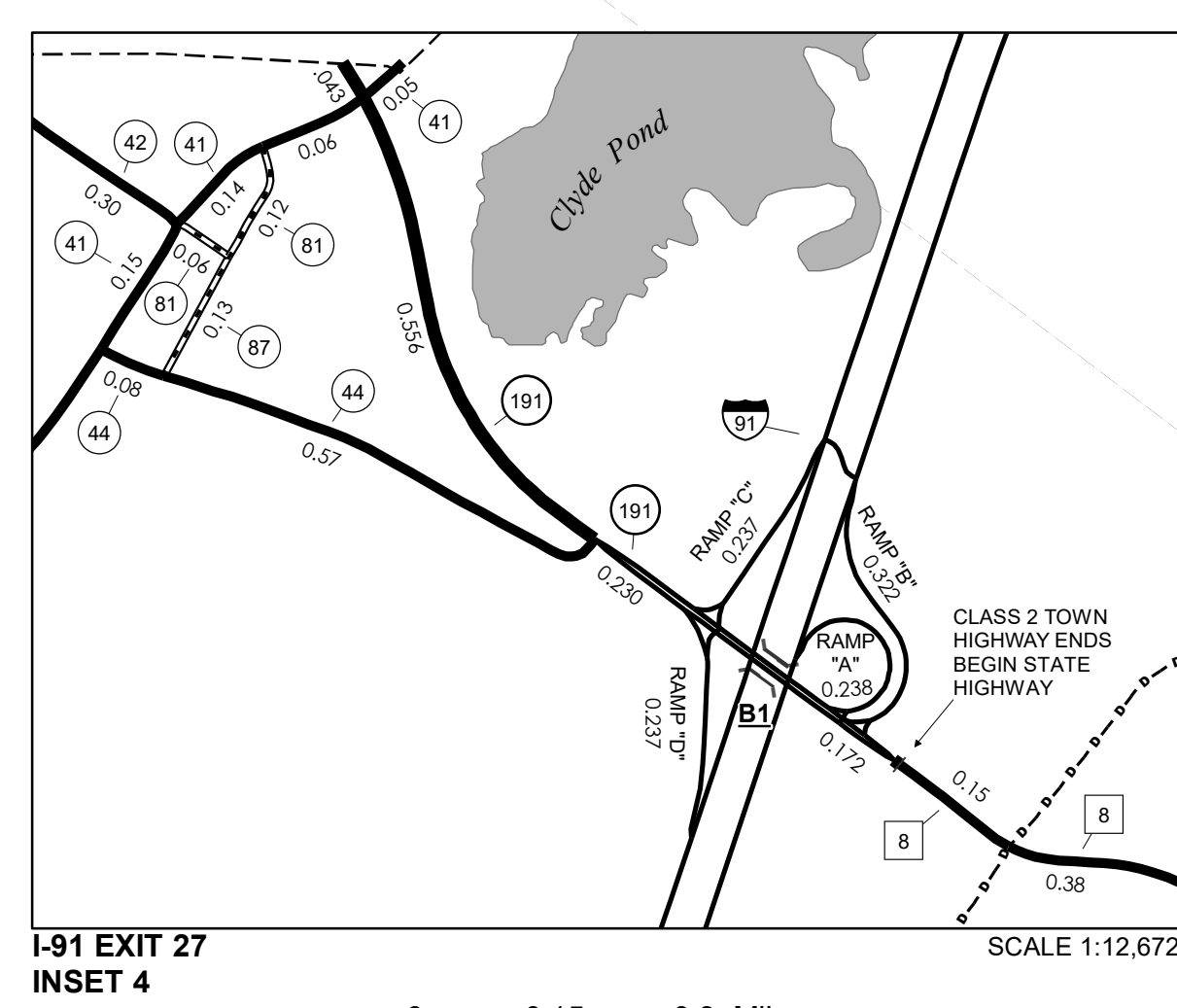
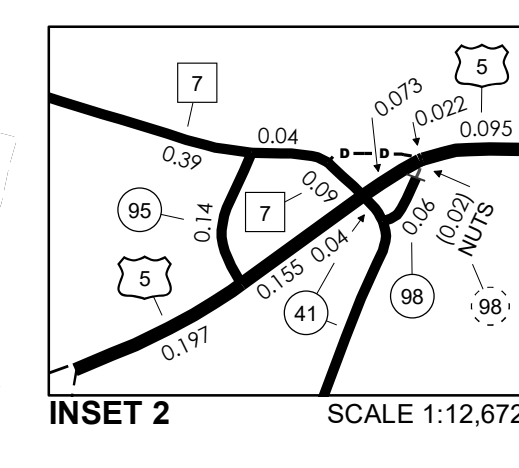
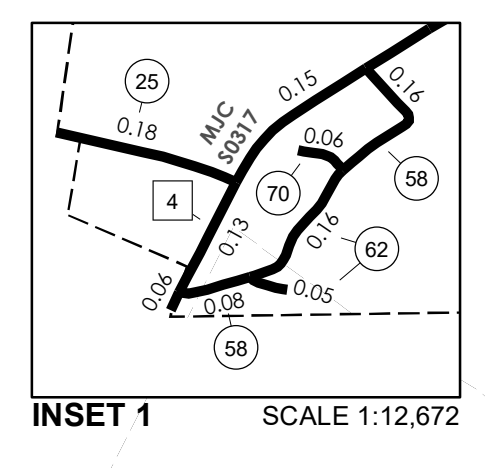


TOWN HWY. No.	LENGTH IN MILES CLASS 3	CLASS 4
6	0.14	
8	0.16	
11	0.20	
12	0.55	
13	0.40	
14	0.13	
16	0.50	(0.51)
17	1.77	
18	1.68	
19	0.07	
20	0.21	
21	0.75	
22	5.98	
23	0.95	
24	0.40	
25	0.18	
27	1.50	
28	0.60	
29	0.15	
30	0.85	
31	0.95	
33	0.90	
34	1.02	
35	1.30	
36	0.57	
37	0.18	(0.75)
38	2.30	
39	0.15	
40	0.80	
41	4.21	
42	0.30	
44	0.65	
45	4.35	
46	0.10	
47	0.70	(0.40)
49	0.80	
50	1.15	
51	0.05	
52	0.15	
53	1.10	
54	3.99	
55	0.10	
56	1.15	(0.36)
57	0.15	
58	0.40	
59	0.61	
60	0.52	
61	0.50	
62	0.05	
63	0.46	
64	0.04	
65	0.17	
66	1.62	
67	0.35	
69	0.17	
70	0.06	
78	0.12	
81	0.18	
82	0.75	
83	0.21	
84	0.10	
86	0.58	
87	0.13	
88	0.24	
89	0.32	
90	0.43	
91	0.50	
92	0.45	
93	0.08	
94	0.37	
95	0.14	
96	0.06	
97	0.08	
98	0.06	
99	0.33	
TOTAL	54.37	2.02

MILEAGE SUMMARY

CLASS	LENGTH IN MILES	TOTAL
CLASS 2		
TH-1	2.240	
TH-2	1.390	
TH-3	3.160	
TH-4	4.780	
TH-5	4.690	
TH-6	4.320	
TH-7	1.300	
TH-8	1.130	
TOTAL CLASS 2		22.980
CLASS 3		
TOTAL CLASS 3		54.37
TOTAL TOWN		77.350
STATE HIGHWAY		
VT-105	4.839	
VT-111	3.775	
VT-191	1.001	
TOTAL STATE HIGHWAY		9.615
US HIGHWAY		
US-5	5.118	
TOTAL US HIGHWAY		5.118
TOTAL STATE		14.733
INTERSTATE		
I-91	8.533	
TOTAL INTERSTATE		8.533
INTERSTATE - Ramps		
I-91	2.211	
TOTAL INTERSTATE - Ramps		2.211
TOTAL INTERSTATE		10.744

TOTAL, TRAVELED HIGHWAYS, FEB. 10, 2021: 102.827
(Excludes Class 4 and Legal Trail Mileage)



LEGAL TRAIL

LEGAL TRAIL No.	LENGTH IN MILES LEGAL TRAIL
1	(0.17)
2	(1.79)
3	(0.77)
4	(0.56)
5	(1.12)
6	(0.70)
7	(0.01)
8	(0.95)
10	(0.60)
11	(0.20)
12	(0.45)
13	(0.64)
TOTAL	7.96

TOWN HWY. No.

TOWN HWY. No.	LENGTH IN MILES "NOT UP TO STANDARD"
7	(0.21)
9	(0.05)
14	(0.01)
59	(0.35)
98	(0.02)
TOTAL	0.64

* The sections of the town highways listed above are legally Class 3, but have been deemed "Not Up To Standard" and are functionally Class 4 Town Highways

- HIGHWAYS**
- INTERSTATE OR DIVIDED HIGHWAY
 - STATE - HARD SURFACE OR PAVED
 - TOWN - HARD SURFACE OR PAVED
 - GRAVEL
 - SOIL OR GRADED AND DRAINED EARTH
 - UNIMPROVED OR PRIMITIVE
 - IMPASSABLE OR UNTRAVELED
 - LEGAL TRAIL
 - DISCONTINUED
 - HIGHWAY CLASS CHANGE
 - RAILROAD
 - INACTIVE RAILROAD
 - PUBLIC LAND - NATIONAL FOREST
 - PUBLIC LAND - STATE/MUNICIPAL
 - NATIONAL FOREST ROAD
 - STATE FOREST HIGHWAY

- POLITICAL SUBDIVISIONS**
- STATE BOUNDARY
 - COUNTY BOUNDARY
 - TOWN BOUNDARY
 - VILLAGE BOUNDARY
 - URBAN COMPACT BOUNDARY
 - WATER BODY
 - STREAM OR BROOK
- BRIDGE OR CULVERT**
- BRIDGE OR CULVERT > 20'
 - BRIDGE OR CULVERT 6' - 20'
 - BIKE PATH STRUCTURE
 - VT CULVERTS BRIDGE
 - VT CULVERTS CULVERT > 6'
- FEDERAL CLASSIFICATION IDENTIFIER**
- MA MINOR ARTERIAL
 - MJC MAJOR COLLECTOR
 - MNC MINOR COLLECTOR
 - PA PRINCIPAL ARTERIAL
- B34 / C34 STATE BRIDGE OR CULVERT IDENTIFIER**
- B34 / C34 TOWN BRIDGE OR CULVERT IDENTIFIER**

DISCLAIMER:
The untraveled highways (laid-out town highways), discontinued highways, and legal trails herein are those of which the Agency of Transportation has record; others may exist.

Highway and bridge data by the Agency of Transportation. Town short structures drawn from the VT CULVERTS (formerly VOBCTI) online database. All other data from the Vermont Open Geodata Portal. Only named streams shown.

VERMONT GENERAL HIGHWAY MAP
Town of Derby
ORLEANS COUNTY
Transportation District #9

Prepared by the
Vermont Agency of Transportation
Division of Policy, Planning and Intermodal Development
in cooperation with
U.S. Department of Transportation
Federal Highway Administration

Mileage as of February 10, 2021
Map prepared June 28, 2021
SCALE 1:31,680

0.5 0 0.5 1 1.5 2 Miles
0.5 0 0.5 1 1.5 2 Kilometers