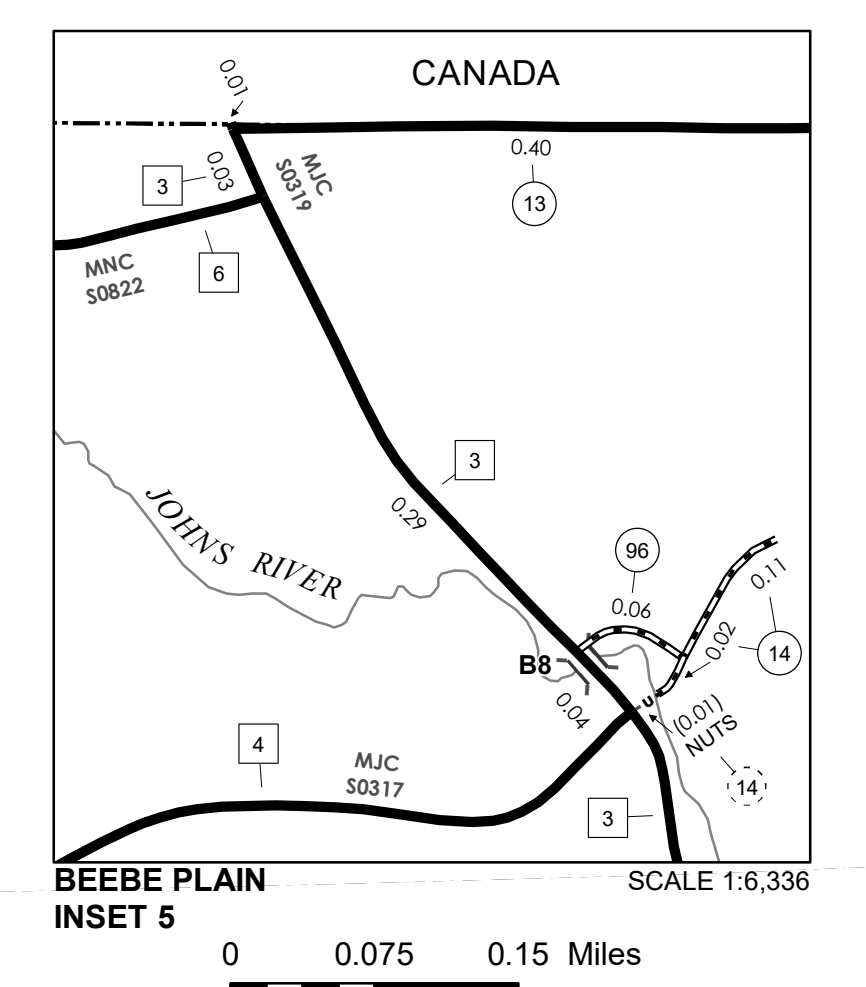
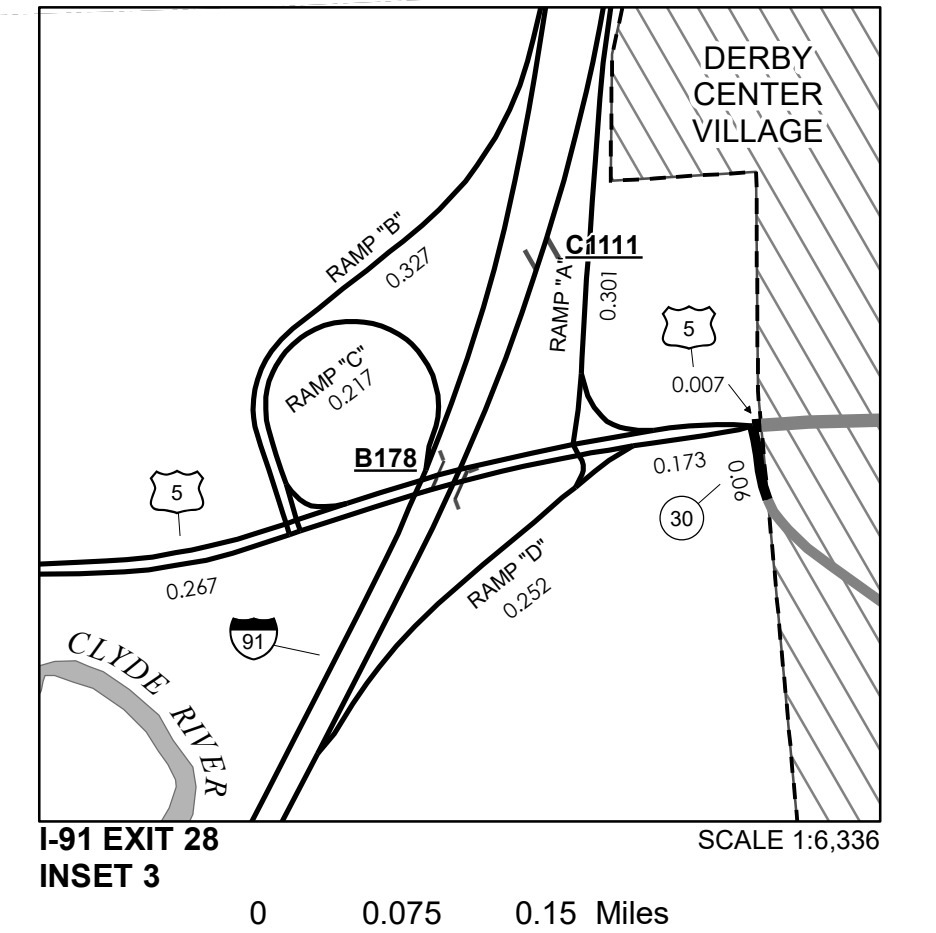
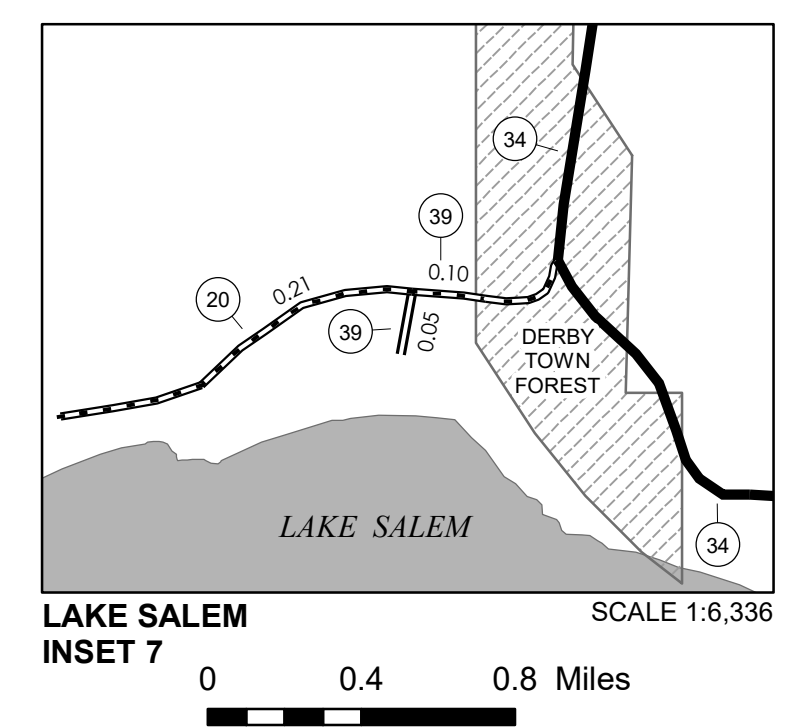
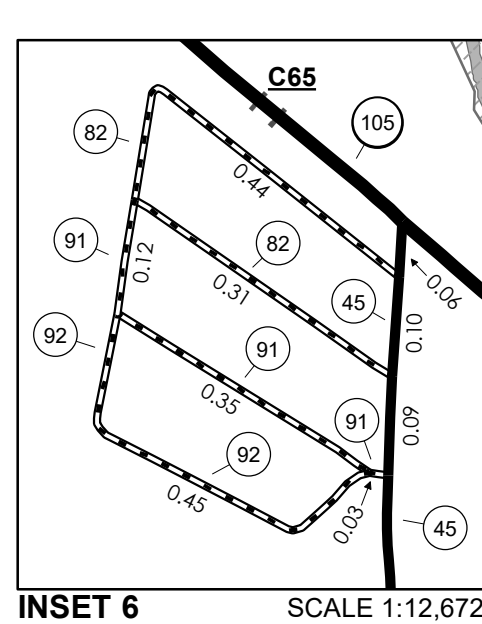
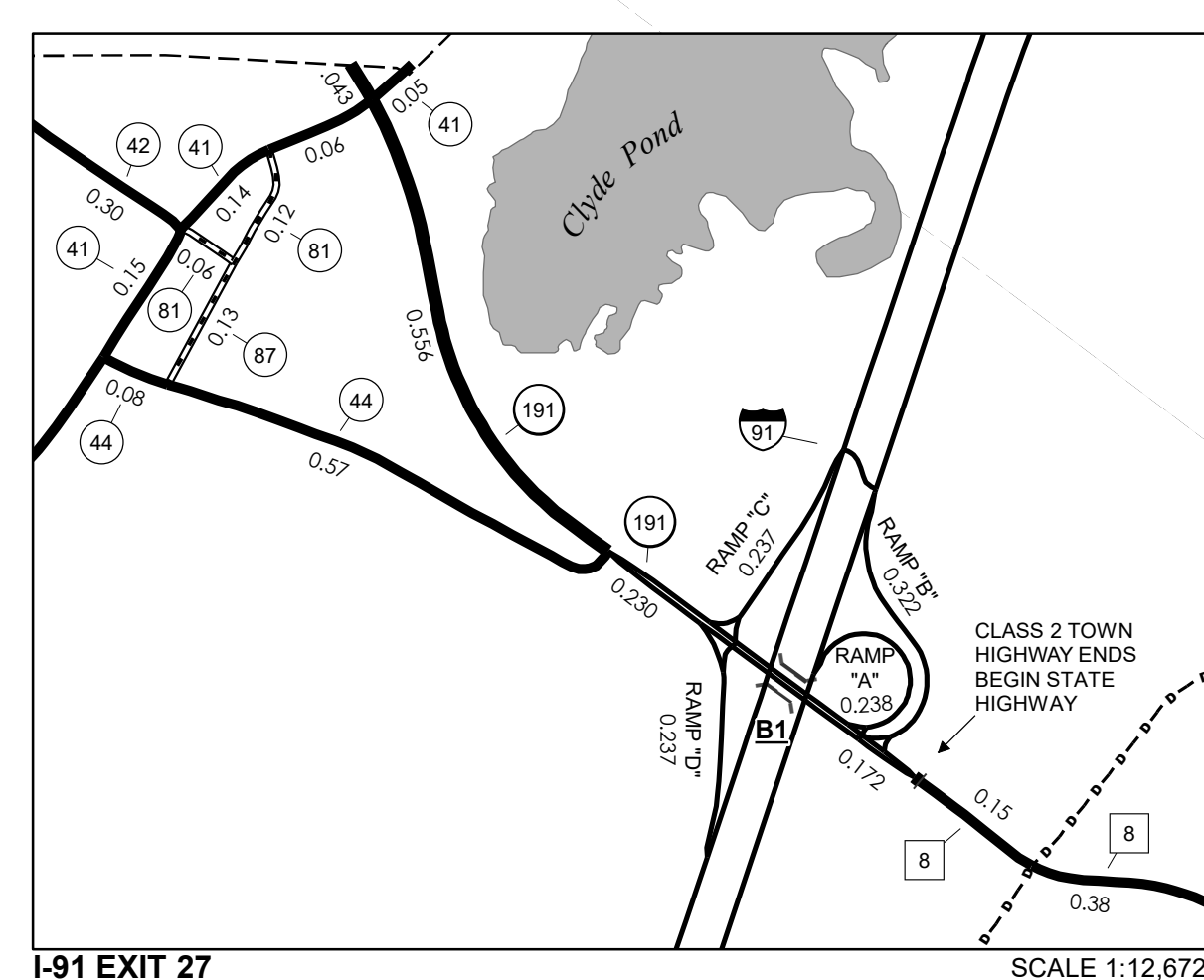
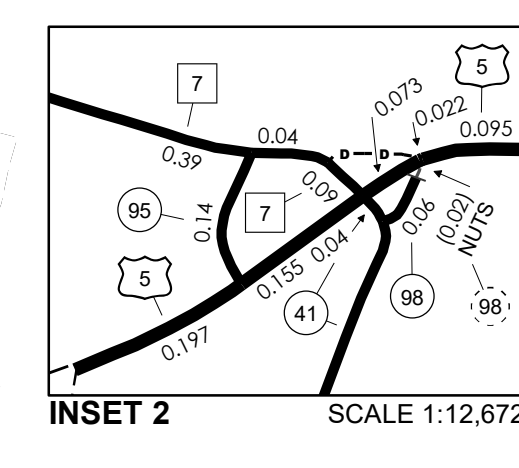
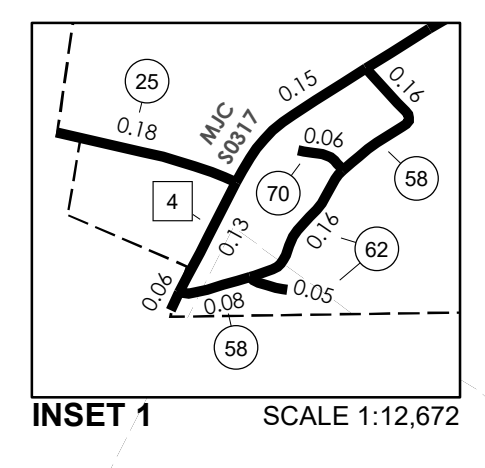


TOWN HWY. No.	LENGTH IN MILES CLASS 3	CLASS 4
6	0.14	
8	0.16	
11	0.20	
12	0.55	
13	0.40	
14	0.13	
16	0.50	(0.51)
17	1.77	
18	1.68	
19	0.07	
20	0.21	
21	0.75	
22	5.98	
23	0.95	
24	0.40	
25	0.18	
27	1.50	
28	0.60	
29	0.15	
30	0.85	
31	0.95	
33	0.90	
34	1.02	
35	1.30	
36	0.57	
37	0.18	
38	2.30	(0.75)
39	0.15	
40	0.80	
41	4.21	
42	0.30	
44	0.65	
45	4.35	
46	0.10	
47	0.70	(0.40)
49	0.80	
50	1.15	
51	0.05	
52	0.15	
53	1.10	
54	3.99	
55	0.10	
56	1.15	(0.36)
57	0.15	
58	0.40	
59	0.61	
60	0.52	
61	0.50	
62	0.05	
63	0.46	
64	0.04	
65	0.17	
66	1.62	
67	0.35	
69	0.17	
70	0.06	
78	0.12	
81	0.18	
82	0.75	
83	0.21	
84	0.10	
86	0.58	
87	0.13	
88	0.24	
89	0.32	
90	0.43	
91	0.50	
92	0.45	
93	0.08	
94	0.37	
95	0.14	
96	0.06	
97	0.08	
98	0.06	
99	0.33	
TOTAL	54.37	2.02

**MILEAGE SUMMARY**

CLASS	LENGTH IN MILES	TOTAL
CLASS 2		
TH-1	2.240	
TH-2	1.390	
TH-3	3.160	
TH-4	4.780	
TH-5	4.600	
TH-6	4.320	
TH-7	1.300	
TH-8	1.130	
TOTAL CLASS 2		22.980
CLASS 3		
TOTAL CLASS 3		54.37
TOTAL TOWN		77.350
STATE HIGHWAY		
VT-105	4.839	
VT-111	3.775	
VT-191	1.001	
TOTAL STATE HIGHWAY		9.615
US HIGHWAY		
US-5	5.118	
TOTAL US HIGHWAY		5.118
TOTAL STATE		14.733
INTERSTATE		
I-91	8.533	
TOTAL INTERSTATE		8.533
INTERSTATE - Ramps		
I-91	2.249	
TOTAL INTERSTATE - Ramps		2.249
TOTAL INTERSTATE		10.782
TOTAL, TRAVELED HIGHWAYS, FEB. 10, 2020		102.865

(Excludes Class 4 and Legal Trail Mileage)



**LEGAL TRAIL**

LEGAL TRAIL No.	LENGTH IN MILES LEGAL TRAIL
1	(0.17)
2	(1.79)
3	(0.77)
4	(0.56)
5	(1.12)
6	(0.70)
7	(0.01)
8	(0.95)
10	(0.60)
11	(0.20)
12	(0.45)
13	(0.64)
TOTAL	7.96

**TOWN HWY. No.**

TOWN HWY. No.	LENGTH IN MILES "NOT UP TO STANDARD"
7	(0.21)
9	(0.05)
14	(0.01)
59	(0.35)
98	(0.02)
TOTAL	0.64

\* The sections of the town highways listed above are legally Class 3, but have been deemed "Not Up To Standard" and are functionally Class 4 Town Highways

- HIGHWAYS**
- INTERSTATE OR DIVIDED HIGHWAY
  - STATE - HARD SURFACE OR PAVED
  - TOWN - HARD SURFACE OR PAVED
  - GRAVEL
  - SOIL OR GRADED AND DRAINED EARTH
  - UNIMPROVED OR PRIMITIVE
  - IMPASSABLE OR UNTRAVELED
  - LEGAL TRAIL
  - DISCONTINUED
  - HIGHWAY CLASS CHANGE
  - RAILROAD
  - INACTIVE RAILROAD
  - PARK AND RIDE

- POLITICAL SUBDIVISIONS**
- STATE BOUNDARY
  - COUNTY BOUNDARY
  - TOWN BOUNDARY
  - VILLAGE BOUNDARY
  - URBAN COMPACT BOUNDARY
  - WATER BODY
  - STREAM OR BROOK
- BRIDGE OR CULVERT**
- BRIDGE OR CULVERT > 20'
  - BRIDGE OR CULVERT 6' - 20'
  - BIKE PATH STRUCTURE
  - VT CULVERTS BRIDGE
  - VT CULVERTS CULVERT > 6'
- FEDERAL CLASSIFICATION IDENTIFIER**
- MA MINOR ARTERIAL
  - MJC MAJOR COLLECTOR
  - MNC MINOR COLLECTOR
  - PA PRINCIPAL ARTERIAL
- B34 / C34 STATE BRIDGE OR CULVERT IDENTIFIER**
- B34 / C34 TOWN BRIDGE OR CULVERT IDENTIFIER**

**DISCLAIMER:**  
The untraveled highways (laid-out town highways), discontinued highways, and legal trails herein are those of which the Agency of Transportation has record; others may exist.

Highway and bridge data by the Agency of Transportation. Town short structures drawn from the VTCULVERTS (formerly VOBCTI) online database. All other data from the Vermont Open Geodata Portal. Only named streams shown.

**VERMONT GENERAL HIGHWAY MAP**  
**Town of Derby**  
 ORLEANS COUNTY  
 Transportation District #9

Prepared by the  
 Vermont Agency of Transportation  
 Division of Policy, Planning and Intermodal Development  
 in cooperation with  
 U.S. Department of Transportation  
 Federal Highway Administration

Mileage as of February 10, 2020  
 Map prepared November 05, 2020  
 SCALE 1:31,680