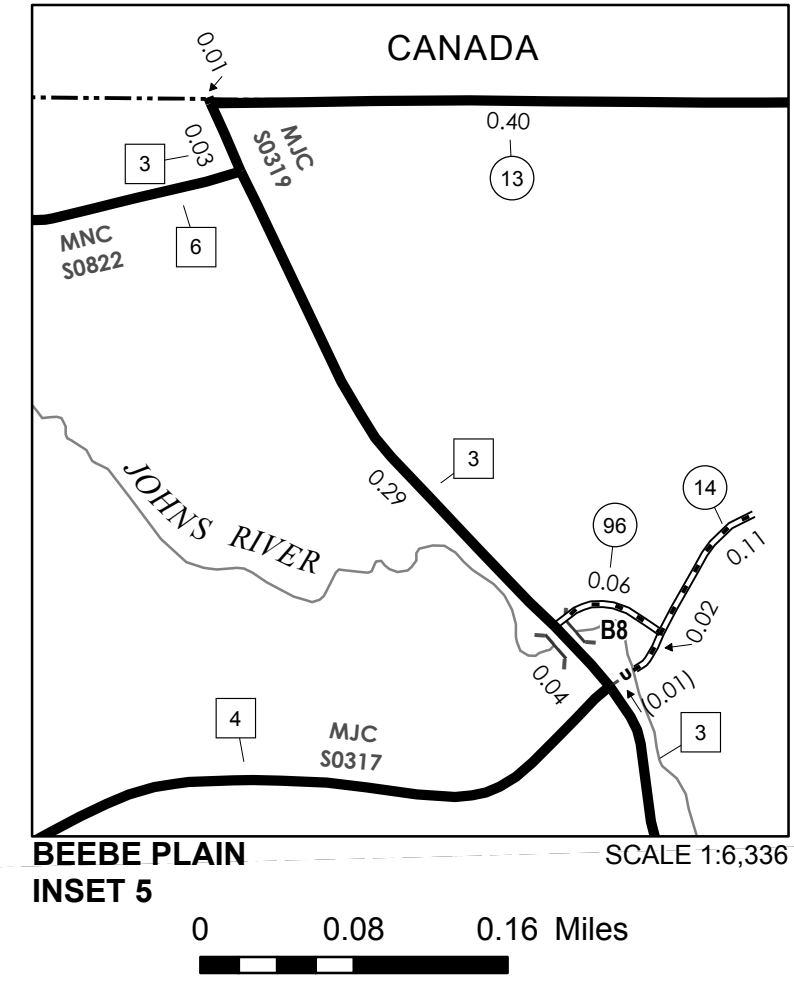
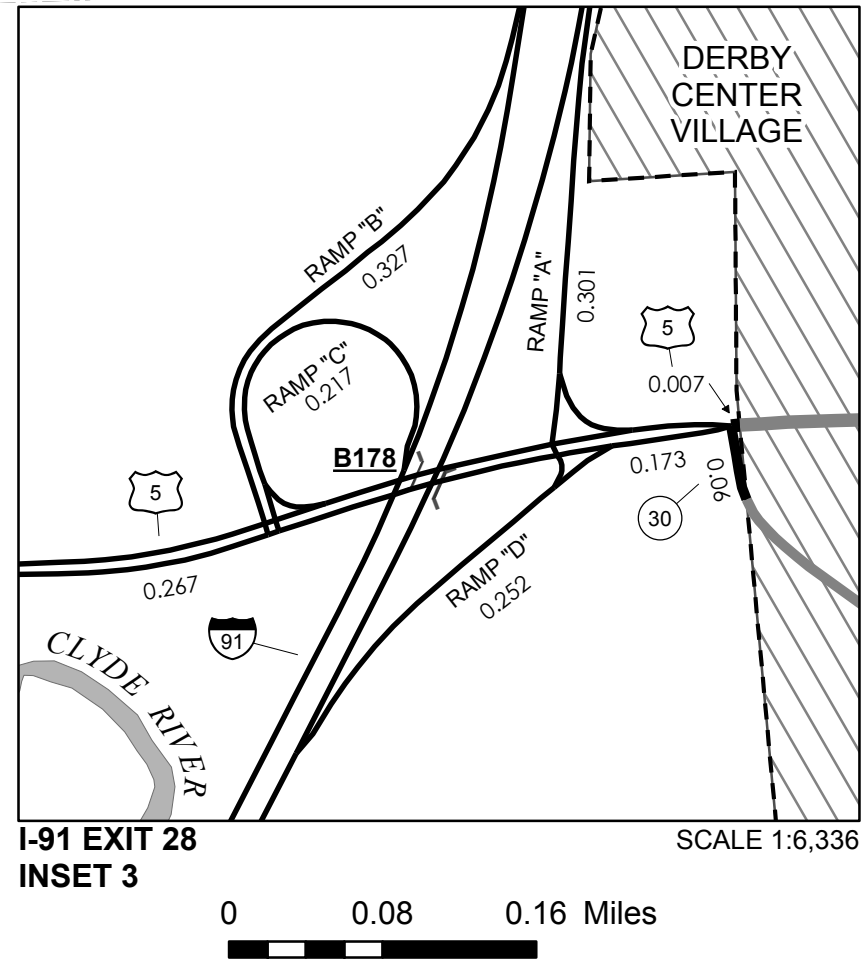
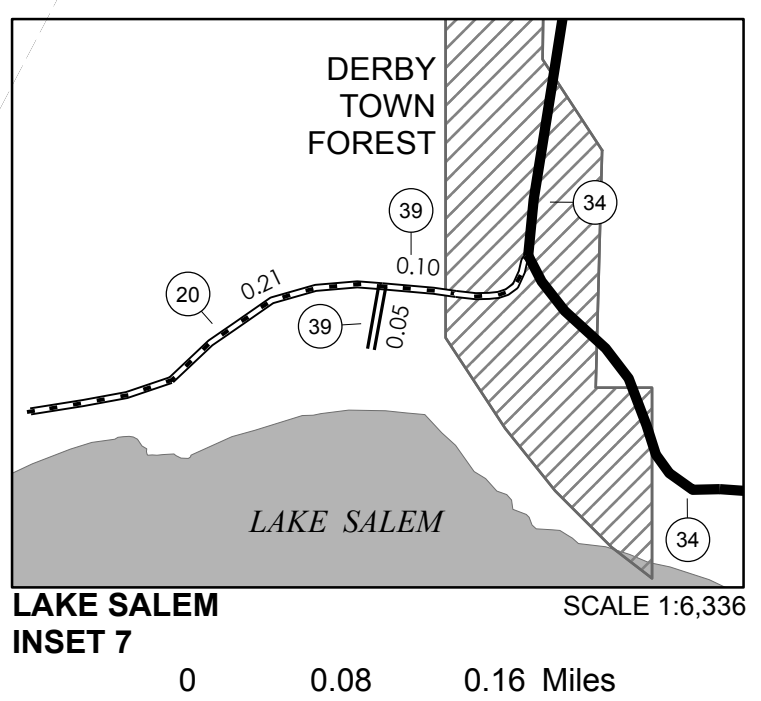
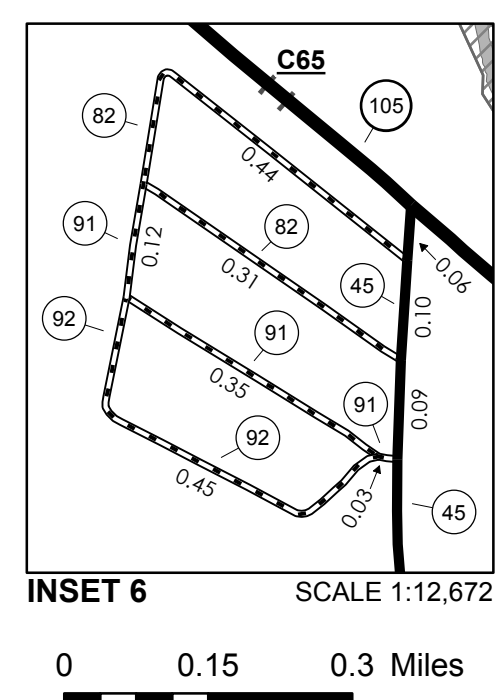
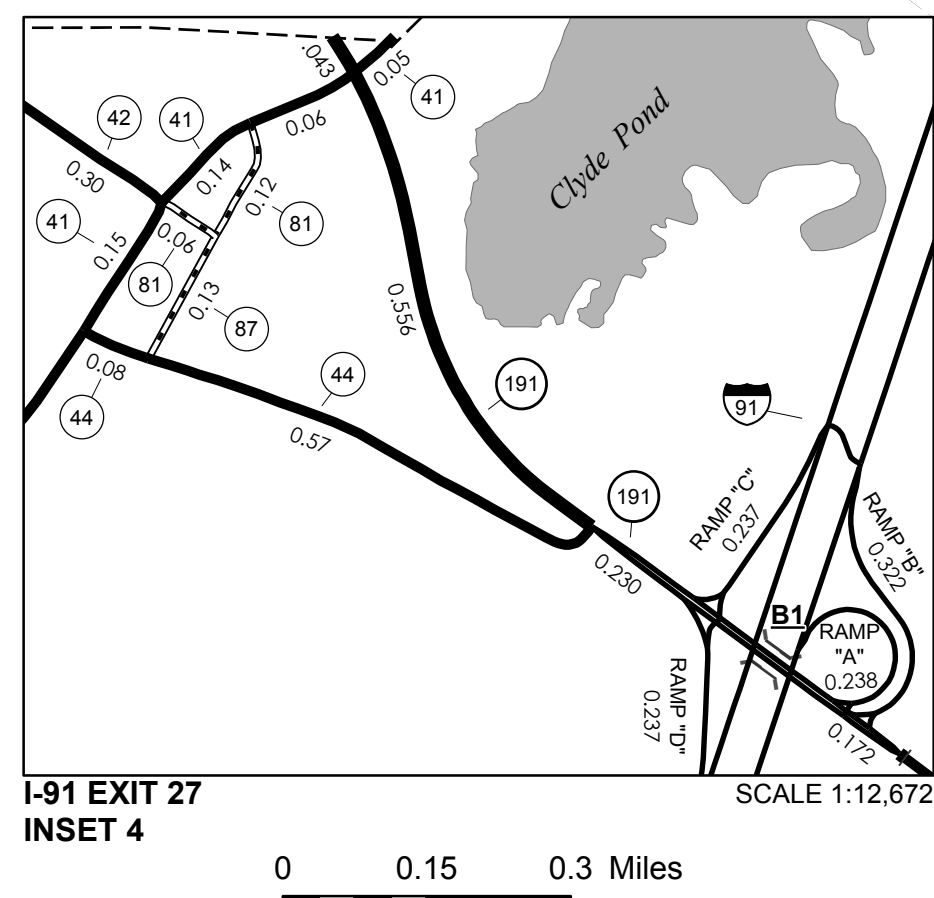
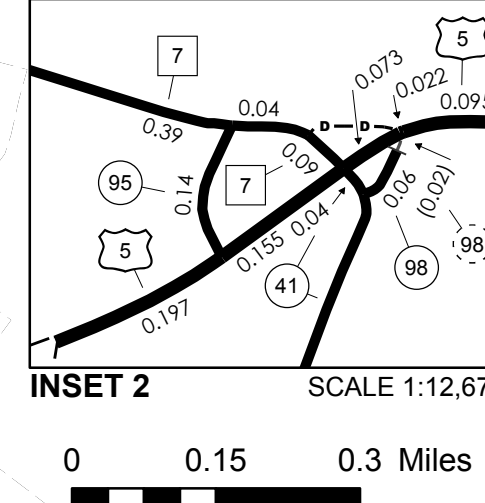
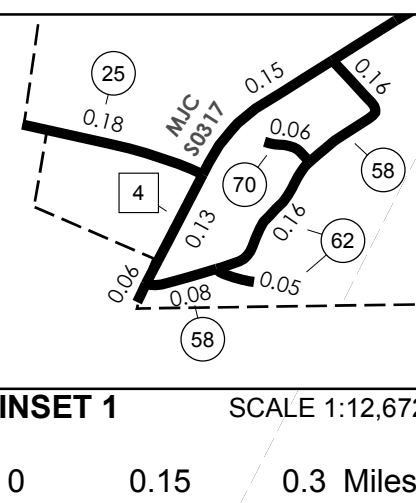


TOWN HWY. No.	LENGTH IN MILES CLASS 3	CLASS 4
6	0.14	
8	0.16	
11	0.20	
12	0.55	
13	0.40	
14	0.13	
16	0.50	(0.51)
17	1.77	
18	1.68	
19	0.07	
20	0.21	
21	0.75	
22	5.98	
23	0.95	
24	0.40	
25	0.18	
27	1.50	
28	0.60	
29	0.15	
30	0.85	
31	0.95	
33	0.90	(0.45)
34	1.02	
35	1.30	
36	0.57	
37	0.18	(0.75)
38	2.30	
39	0.15	
40	0.80	
41	4.21	
42	0.30	
43		(0.40)
44	0.65	
45	4.35	
46	0.10	
47	0.70	(0.40)
49	0.80	
50	1.15	
51	0.05	
52	0.15	
53	1.10	
54	3.99	
55	0.10	(0.36)
56	1.05	
57	0.15	
58	0.40	
59	0.61	
60	0.52	
61	0.50	
62	0.05	
63	0.46	
64	0.04	
65	0.17	
66	1.62	
67	0.35	
69	0.17	
70	0.06	
78	0.12	
81	0.18	
82	0.75	
83	0.21	
84	0.10	
86	0.58	
87	0.13	
88	0.24	
89	0.32	
90	0.43	
91	0.50	
92	0.45	
93	0.08	
94	0.37	
95	0.14	
96	0.06	
97	0.08	
98	0.06	
99	0.33	
TOTAL	54.27	2.87

MILEAGE SUMMARY

CLASS	LENGTH IN MILES	TOTAL
CLASS 2		
TH-1	2.240	
TH-2	1.390	
TH-3	3.160	
TH-4	4.780	
TH-5	4.660	
TH-6	4.320	
TH-7	1.300	
TH-8	1.130	
TOTAL CLASS 2		22.980
CLASS 3		
TOTAL CLASS 3		54.27
TOTAL TOWN		77.250
STATE HIGHWAY		
VT-105	4.839	
VT-111	3.775	
VT-191	1.001	
TOTAL STATE HIGHWAY		9.615
US HIGHWAY		
US-5	5.118	
TOTAL US HIGHWAY		5.118
TOTAL STATE		14.733
INTERSTATE		
I-91	8.533	
TOTAL INTERSTATE		8.533
INTERSTATE - Ramps		
I-91	2.249	
TOTAL INTERSTATE - Ramps		2.249
TOTAL INTERSTATE		10.782
TOTAL, TRAVELED HIGHWAYS, FEB. 10, 2016:		102.765

(Excludes Class 4 and Legal Trail Mileage)



LEGAL TRAIL

TOWN HWY. No.	LENGTH IN MILES LEGAL TRAIL
1	(0.17)
2	(1.79)
3	(0.77)
4	(0.56)
5	(1.12)
6	(0.70)
7	(0.01)
8	(0.95)
9	(0.32)
10	(0.60)
11	(0.20)
12	(0.45)
13	(0.64)
TOTAL	8.28

TOWN HWY. No.

TOWN HWY. No.	LENGTH IN MILES "NOT UP TO STANDARD"
7	(0.21)
9	(0.05)
14	(0.01)
56	(0.10)
59	(0.35)
98	(0.02)
TOTAL	0.74

**The sections of the town highways listed above are legally Class 3, but have been deemed "Not Up To Standard" and are functionally Class 4 Town Highways*

- HIGHWAYS**
- INTERSTATE OR DIVIDED HIGHWAY
 - INTERSTATE
 - U.S. ROUTE
 - STATE ROUTE
 - CLASS 1
 - CLASS 2
 - CLASS 3
 - CLASS 4
 - LEGAL TRAIL
 - INTERSTATE OR DIVIDED HIGHWAY
 - STATE - HARD SURFACE OR PAVED
 - TOWN - HARD SURFACE OR PAVED
 - GRAVEL
 - SOIL OR GRADED AND DRAINED EARTH
 - UNIMPROVED OR PRIMITIVE
 - IMPASSABLE OR UNTRAVELED
 - LEGAL TRAIL
 - DISCONTINUED
 - HIGHWAY CLASS CHANGE
 - RAILROAD
 - INACTIVE RAILROAD
 - NFR NATIONAL FOREST ROAD
 - SFH STATE FOREST HIGHWAY
 - P PARK AND RIDE
 - PUBLIC LAND - GREEN MOUNTAIN NATIONAL FOREST
 - PUBLIC LAND - STATE/MUNICIPAL
 - POLITICAL SUBDIVISIONS**
 - STATE BOUNDARY
 - COUNTY BOUNDARY
 - TOWN BOUNDARY
 - VILLAGE BOUNDARY
 - URBAN COMPACT BOUNDARY
 - WATER BODY
 - STREAM OR BROOK
 - BRIDGE OR CULVERT**
 - BRIDGE OR CULVERT > 20'
 - BRIDGE OR CULVERT 6' - 20'
 - VOBCIT BRIDGE
 - VOBCIT CULVERT > 6'
 - STATE BRIDGE OR CULVERT IDENTIFIER
 - TOWN BRIDGE OR CULVERT IDENTIFIER
 - FEDERAL CLASSIFICATION IDENTIFIER
 - FAU URBAN ARTERIAL OR COLLECTOR
 - MA MINOR ARTERIAL
 - MJC MAJOR COLLECTOR
 - MNC MINOR COLLECTOR
 - PA PRINCIPAL ARTERIAL

DISCLAIMER:
The untraveled highways (laid-out town highways), discontinued highways, and legal trails herein are those of which the Agency of Transportation has record; others may exist.

Highway and bridge data by the Agency of Transportation. Town short structures are drawn from the Vermont Online Bridge & Culvert Inventory Tool (VOBCIT) database. All other data from the Vermont Center for Geographic Information. Only named streams are shown.

VERMONT GENERAL HIGHWAY MAP
Town of Derby
 ORLEANS COUNTY
 Transportation District #9

Prepared by the
Vermont Agency of Transportation
 Division of Policy, Planning and Intermodal Development
 in cooperation with
U.S. Department of Transportation
 Federal Highway Administration

Mileage as of February 10, 2016
 Map prepared July 21, 2016
 SCALE 1:31,680

0.5 0 0.5 1 1.5 2 Miles
 0.5 0 0.5 1 1.5 2 Kilometers