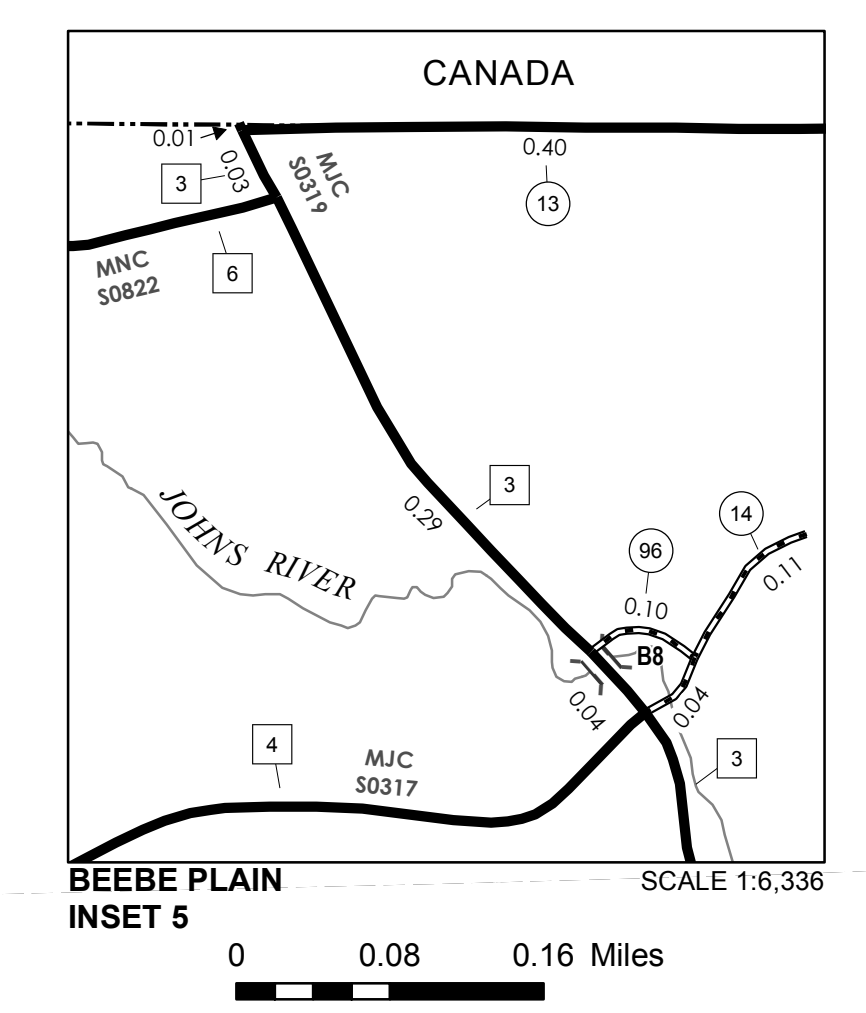
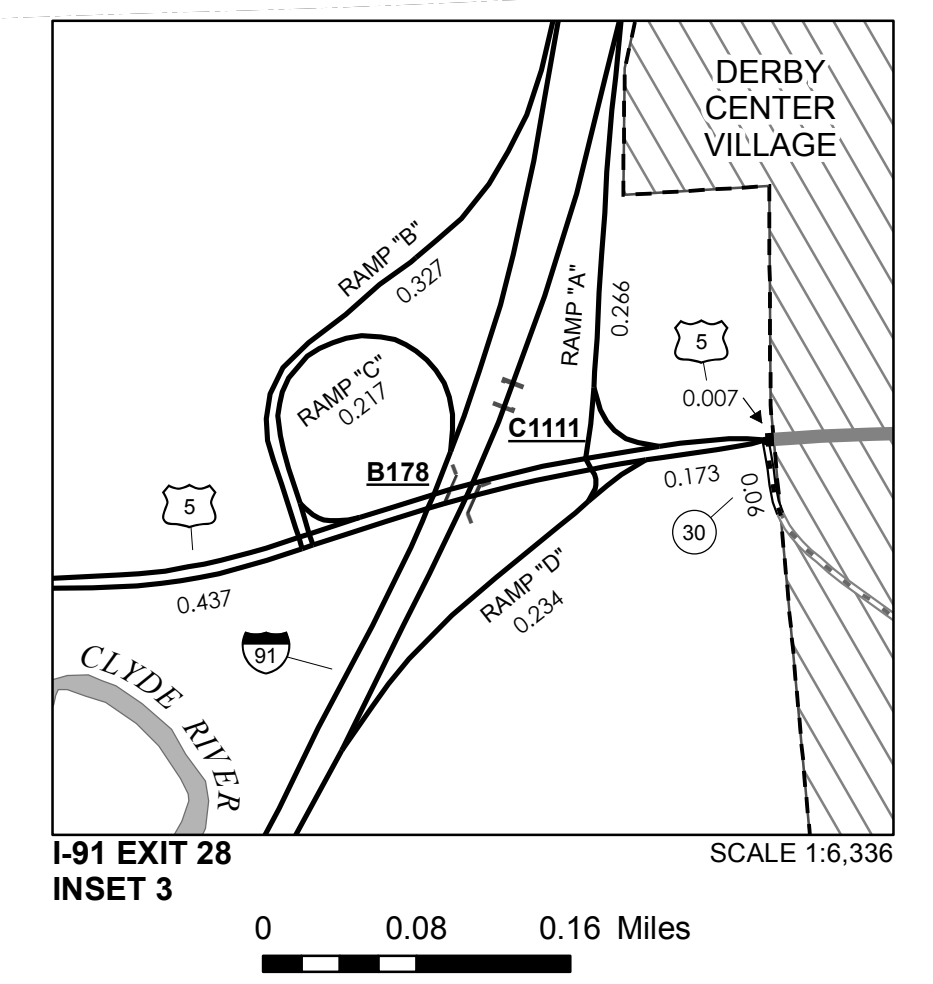
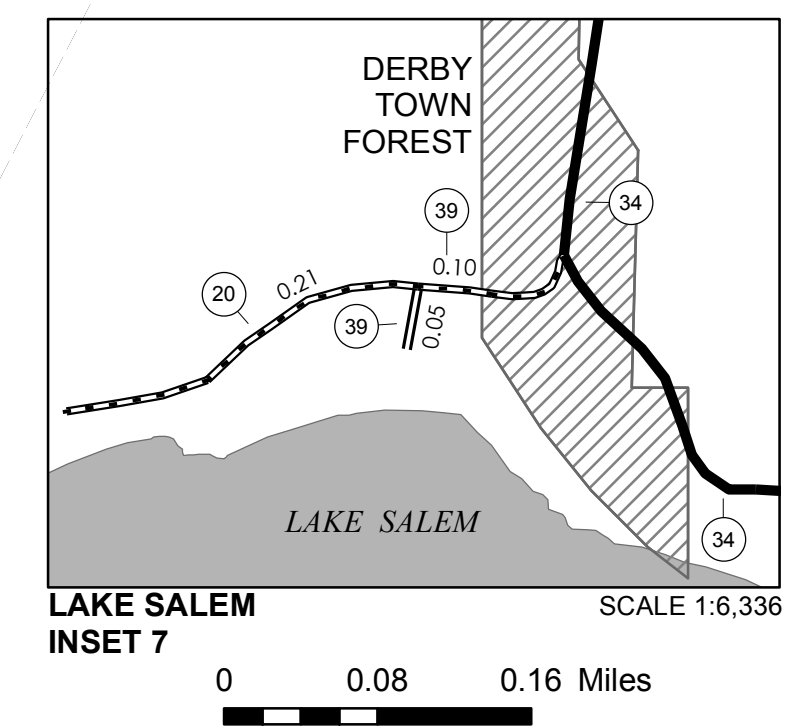
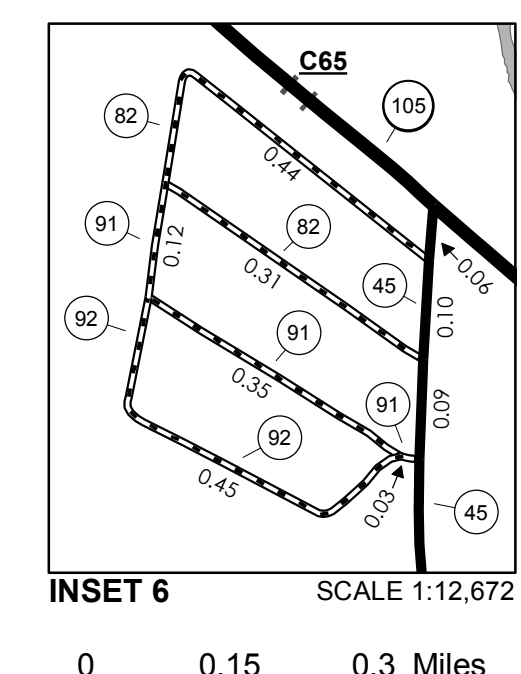
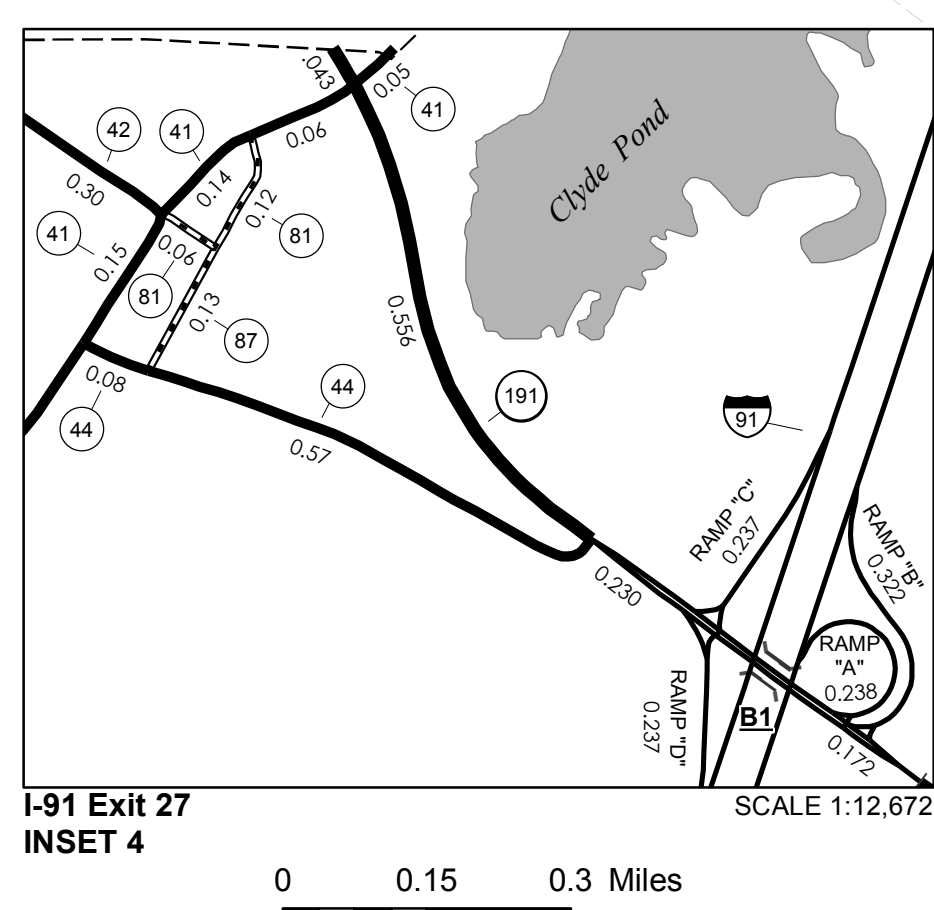
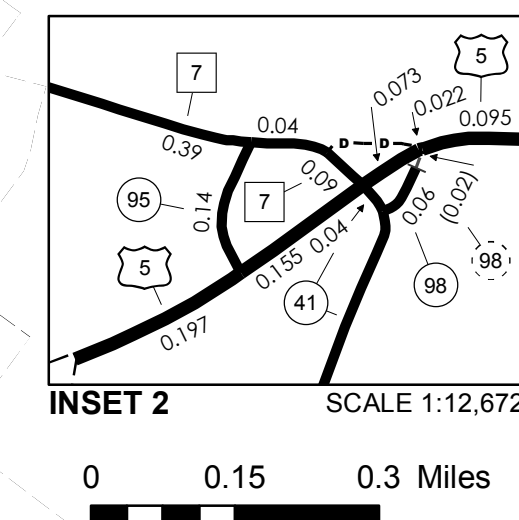
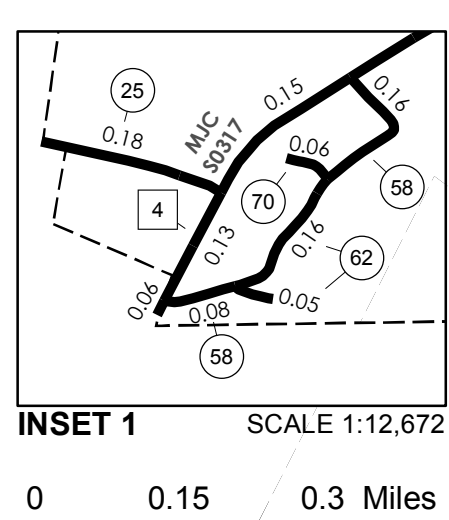


TOWN HWY. No.	LENGTH IN MILES CLASS 3	CLASS 4
6	0.14	
8	0.16	
11	0.20	
12	0.55	
13	0.40	
14	0.15	
16	0.50	(0.51)
17	1.77	
18	1.68	
19	0.07	
20	0.21	
21	0.75	
22	5.98	
23	0.95	
24	0.40	
25	0.18	
27	1.50	
28	0.60	
29	0.15	
30	0.85	
31	0.95	
32	0.53	
33	0.90	(0.45)
34	1.02	
35	1.30	
36	0.57	
37	0.18	(0.75)
38	2.30	
39	0.15	
40	0.80	
41	4.21	
42	0.30	(0.40)
43	0.60	
44	0.65	
45	4.35	
46	0.10	(0.40)
47	0.70	
49	0.80	
50	1.15	
51	0.05	
52	0.15	
53	1.10	
54	3.99	
55	0.10	(0.36)
56	1.05	
57	0.15	
58	0.40	
59	0.61	
60	0.52	
61	0.50	
62	0.05	
63	0.46	
64	0.04	
65	0.17	
66	1.62	
67	0.35	
69	0.17	
70	0.06	
78	0.12	
81	0.18	
82	0.75	
83	0.21	
84	0.10	
86	0.58	
87	0.13	
88	0.24	
89	0.32	
90	0.43	
91	0.50	
92	0.45	
93	0.08	
94	0.37	
95	0.14	
96	0.10	
97	0.08	
98	0.06	
<b>TOTAL</b>	<b>55.13</b>	<b>2.87</b>

**MILEAGE SUMMARY**

CLASS 2	CLASS 3	CLASS 4
TH-1	2,240	
TH-2	1,390	
TH-3	3,160	
TH-4	4,780	
TH-5	4,660	
TH-6	4,320	
TH-7	1,300	
<b>TOTAL CLASS 2</b>	<b>21,850</b>	
<b>TOTAL CLASS 3</b>	<b>55.13</b>	
<b>TOTAL TOWN</b>	<b>76,980</b>	
<b>STATE HIGHWAY</b>		
VT-105	4,839	
VT-111	3,775	
VT-191	1,001	
<b>TOTAL STATE HIGHWAY</b>	<b>9,615</b>	
<b>US HIGHWAY</b>		
US-5	5,118	
<b>TOTAL US HIGHWAY</b>	<b>5,118</b>	
<b>TOTAL STATE</b>	<b>14,733</b>	
<b>INTERSTATE</b>		
I-91	8,533	
<b>TOTAL INTERSTATE</b>	<b>8,533</b>	
<b>INTERSTATE - Ramps</b>		
I-91	2,196	
<b>TOTAL INTERSTATE - Ramps</b>	<b>2,196</b>	
<b>TOTAL INTERSTATE</b>	<b>10,729</b>	
<b>TOTAL, TRAVELED HIGHWAYS, FEB. 10, 2013:</b>	<b>102,442</b>	

*(Excludes Class 4, Legal Trail, and Unidentified Corridor Mileage)*



**LEGAL TRAIL**

TRAIL No.	LENGTH IN MILES LEGAL TRAIL
1	(0.17)
2	(1.79)
3	(0.77)
4	(0.56)
5	(1.12)
6	(0.70)
7	(0.01)
8	(0.95)
9	(0.32)
10	(0.60)
11	(0.20)
12	(0.45)
13	(0.64)
<b>TOTAL</b>	<b>8.28</b>

**TOWN HWY. No.**

LENGTH IN MILES "NOT UP TO STANDARD"	
7	(0.21)
9	(0.05)
56	(0.10)
59	(0.35)
98	(0.02)
<b>TOTAL</b>	<b>0.73</b>

*\* The sections of the town highways listed above are legally Class 3, but have been deemed "Not Up To Standard" and are functionally Class 4 Town Highways*

- HIGHWAYS**
- INTERSTATE
  - U.S. ROUTE
  - STATE ROUTE
  - CLASS 1
  - CLASS 2
  - CLASS 3
  - CLASS 4
  - LEGAL TRAIL
- INTERSTATE OR DIVIDED HIGHWAY**
- STATE - HARD SURFACE OR PAVED
  - TOWN - HARD SURFACE OR PAVED
  - GRAVEL
  - SOIL OR GRADED AND DRAINED EARTH
  - UNIMPROVED OR PRIMITIVE
  - IMPASSABLE OR UNTRAVELED
  - LEGAL TRAIL
  - DISCONTINUED
  - HIGHWAY CLASS CHANGE
  - RAILROAD
  - INACTIVE RAILROAD
  - PARK AND RIDE
- PUBLIC LAND - GREEN MOUNTAIN NATIONAL FOREST**
- PUBLIC LAND - STATE/MUNICIPAL
- POLITICAL SUBDIVISIONS**
- STATE BOUNDARY
  - COUNTY BOUNDARY
  - TOWN BOUNDARY
  - VILLAGE BOUNDARY
  - URBAN COMPACT BOUNDARY
  - WATER BODY
  - STREAM OR BROOK
- BRIDGE OR CULVERT**
- BRIDGE OR CULVERT GREATER THAN 20'
  - BRIDGE OR CULVERT 6' - 20'
- FEDERAL CLASSIFICATION IDENTIFIER**
- FAU URBAN ARTERIAL OR COLLECTOR
  - MA MINOR ARTERIAL
  - MJC MAJOR COLLECTOR
  - MNC MINOR COLLECTOR
  - PA PRINCIPAL ARTERIAL
- B34 / C34 STATE BRIDGE OR CULVERT IDENTIFIER**  
**B34 / C34 TOWN BRIDGE OR CULVERT IDENTIFIER**

**DISCLAIMER:**  
 The untraveled highways (laid-out town highways), discontinued highways, and legal trails herein are those of which the Agency of Transportation has record; others may exist.  
 Highway and bridge data by the Agency of Transportation. All other data from the Vermont Center for Geographic Information. Only named streams are shown.

**VERMONT GENERAL HIGHWAY MAP**  
**Town of Derby**  
 ORLEANS COUNTY  
 Transportation District #9  
 Prepared by the Vermont Agency of Transportation  
 Division of Policy, Planning and Intermodal Development  
 in cooperation with  
 U.S. Department of Transportation  
 Federal Highway Administration  
 Mileage as of February 10, 2013  
 Map prepared October 03, 2013  
 SCALE 1:31,680