

TOWN HWY. NO.	LENGTH IN MILES CLASS 3	LENGTH IN MILES CLASS 4		
6	0.140		47	(0.400)
* 7		(0.210)	49	0.800
8	0.160		50	1.150
* 9		(0.050)	51	0.050
11	0.200		52	0.150
12	0.550		53	1.100
13	0.400		54	3.990
14	0.150		55	0.100
16		(0.510)	56	1.050
16	0.500		56	(0.360)
17	1.770		56	(0.100)
18	1.680		57	0.150
19	0.070		58	0.400
20	0.210		59	0.610
21	0.750		* 59	(0.350)
22	5.980		60	0.520
23	0.950		61	0.500
24	0.400		62	0.050
25	0.180		63	0.460
27	1.500		64	0.040
28	0.600		65	0.170
29	0.150		66	1.620
30	0.850		67	0.350
31	0.950		69	0.170
32	0.530		70	0.060
33	0.900		78	0.120
33		(0.450)	81	0.180
34	1.020		82	0.750
35	1.300		83	0.210
36	0.570		84	0.100
37	0.180		86	0.580
37		(0.750)	87	0.130
38	2.300		88	0.240
39	0.150		89	0.320
40	0.800		90	0.430
41	4.250		91	0.500
42	0.300		92	0.450
43	0.600		93	0.080
43		(1.100)	94	0.370
44	0.650		95	0.140
45	4.350		96	0.100
46	0.100		97	0.080
47	0.700		TOTAL	55.110
			4.280	8.28

\* Portion of this town highway is Class 3, but is functionally Class 4

**MILEAGE SUMMARY**

CLASS 2		
TH-1	2.240	
TH-2	1.390	
TH-3	3.160	
TH-4	4.780	
TH-5	4.750	
TH-6	4.320	
TH-7	1.300	
TOTAL CLASS 2	21.940	
CLASS 3		
TOTAL CLASS 3	55.110	
TOTAL TOWN	77.050	
STATE HIGHWAY		
VT-105	4.864	
VT-111	3.775	
VT-191	1.001	
TOTAL STATE HIGHWAY	9.640	
US HIGHWAY		
US-5	5.118	
TOTAL US HIGHWAY	5.118	
TOTAL STATE	14.758	
INTERSTATE		
I-91	8.533	
TOTAL INTERSTATE	8.533	
INTERSTATE - Ramp		
I-91	2.196	
TOTAL INTERSTATE - Ramp	2.196	
TOTAL INTERSTATE	10.729	

**TOTAL, TRAVELED HIGHWAYS, FEB. 10, 2010: 102.537**  
(Excludes Class 4 and Legal Trail Mileage)

- HIGHWAYS**
- INTERNET STATE
  - U.S. ROUTE
  - STATE ROUTE
  - CLASS 1
  - CLASS 2
  - CLASS 3
  - CLASS 4
  - LEGAL TRAIL
  - INTERSTATE OR DIVIDED HIGHWAY
  - STATE - HARD SURFACE OR PAVED
  - TOWN - HARD SURFACE OR PAVED
  - GRAVEL
  - SOIL OR GRADED AND DRAINED EARTH
  - UNIMPROVED OR PRIMITIVE
  - IMPASSABLE OR UNTRAVELED
  - LEGAL TRAIL
  - DISCONTINUED
  - HIGHWAY CLASS CHANGE
  - RAILROAD
  - RAILTRAIL

- PUBLIC LAND**
- POLITICAL SUBDIVISIONS**
- STATE BOUNDARY
  - COUNTY BOUNDARY
  - TOWN BOUNDARY
  - VILLAGE BOUNDARY
  - URBAN COMPACT BOUNDARY
  - WATER BODIES
  - STREAM OR BROOK
  - BRIDGE OR CULVERT
  - BRIDGE OR CULVERT GREATER THAN 20'
  - BRIDGE OR CULVERT 6' - 20'
  - TOWN SHORT STRUCTURE
  - B34 / C34 STATE BRIDGE OR CULVERT IDENTIFIER
  - B34 / C34 TOWN BRIDGE OR CULVERT IDENTIFIER

- FEDERAL CLASSIFICATION IDENTIFIER**
- FAU URBAN ARTERIAL OR COLLECTOR
  - MA MINOR ARTERIAL
  - MJC MAJOR COLLECTOR
  - MNC MINOR COLLECTOR
  - PA PRINCIPAL ARTERIAL

**STRUCTURES - SURFACE WATER NOTE:**

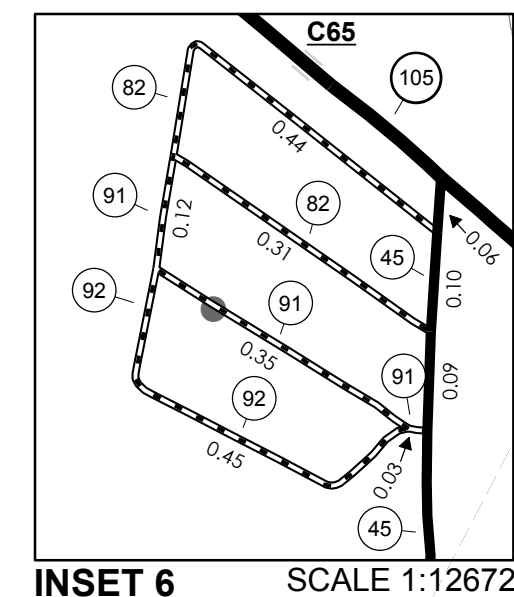
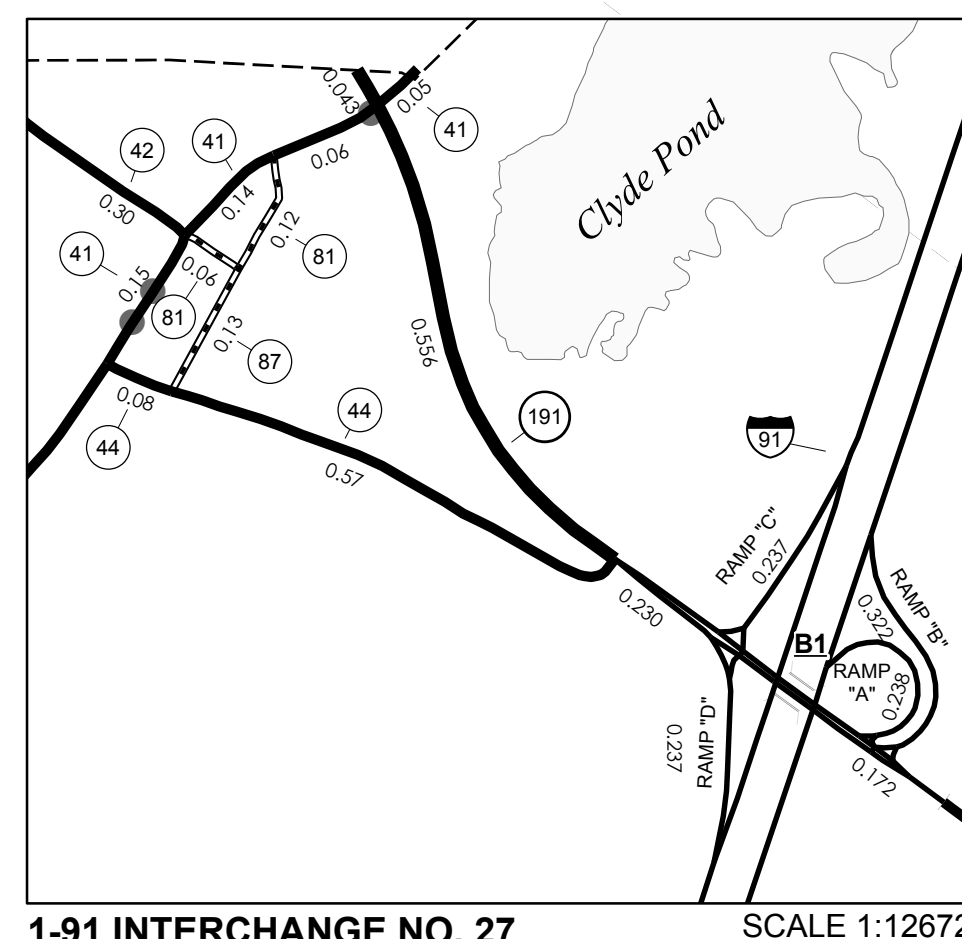
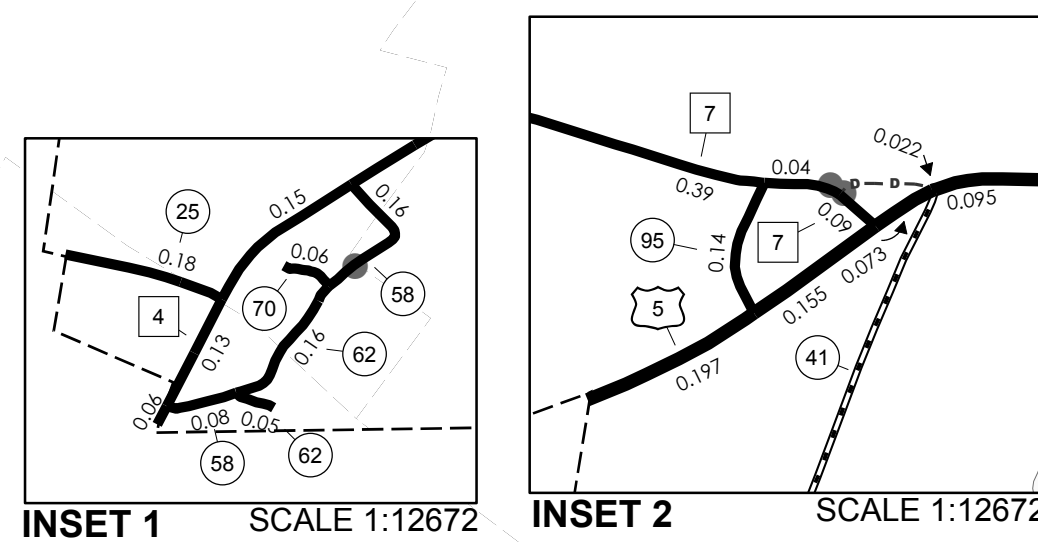
STRUCTURES: Town short structures (bridges or culverts from 4-feet to less than 20-feet) are drawn from the Vermont Online Bridge & Culvert Inventory Tool (VOBCIT) database. NOTE: Town shorts are not consistently tagged within VOBCIT.

The surface waters are from the Vermont Hydrological Dataset (VHD). Only the named streams are shown.

**DISCLAIMER:**

The untraveled highways (laid-out town highways), discontinued highways, and legal trails shown hereon are those of which the Agency of Transportation has record; others may exist.

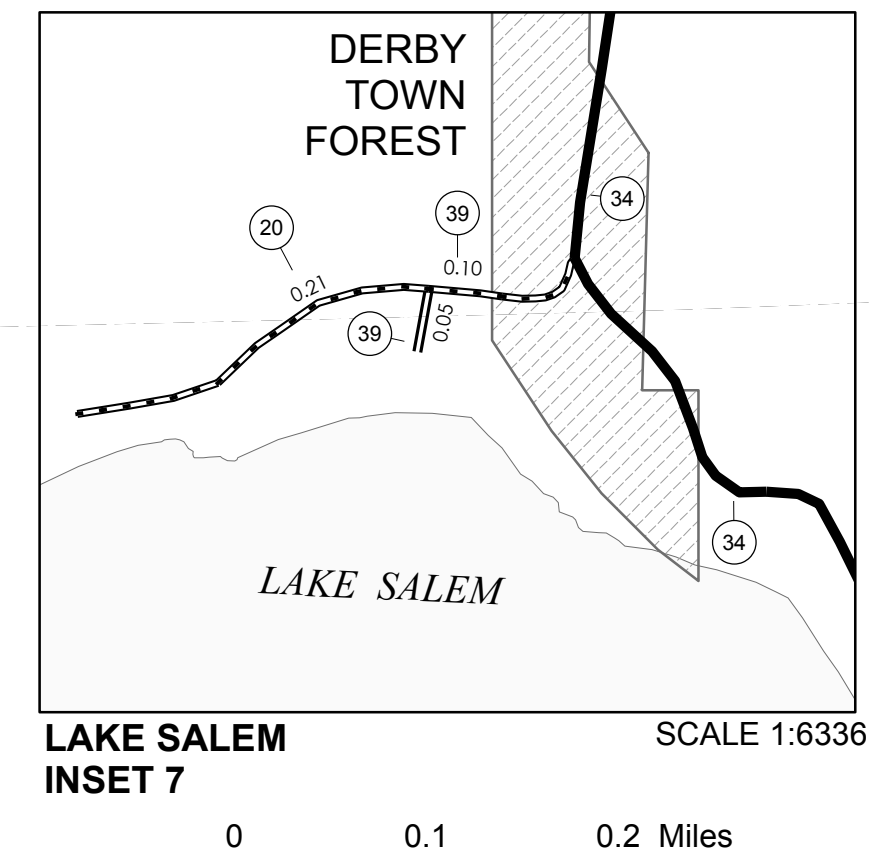
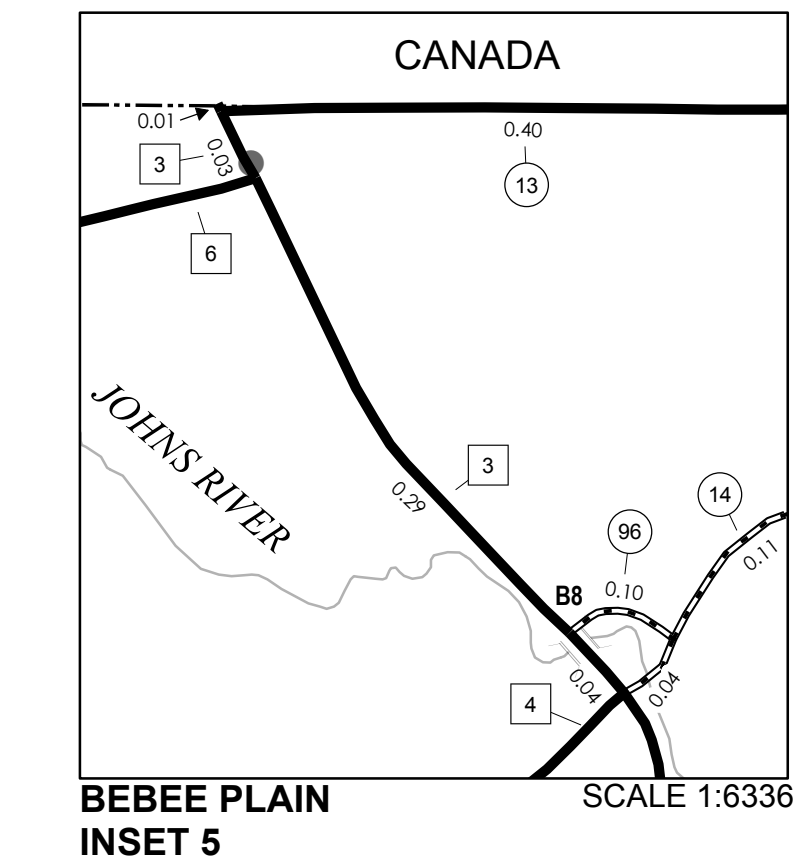
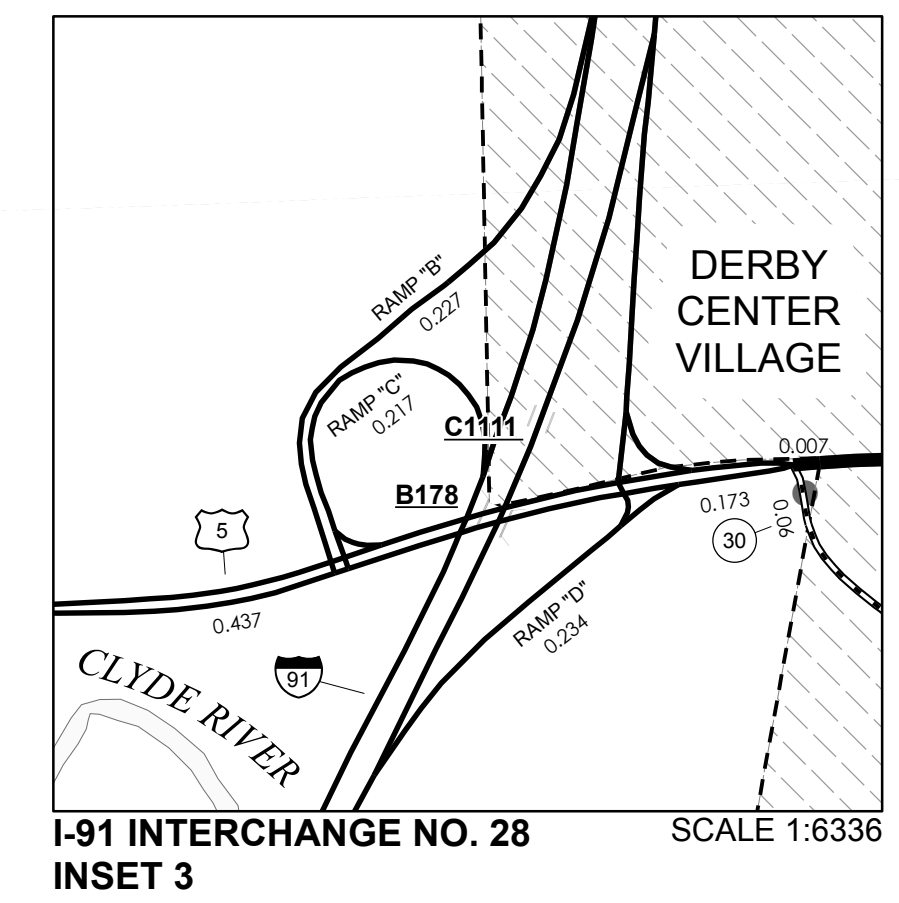
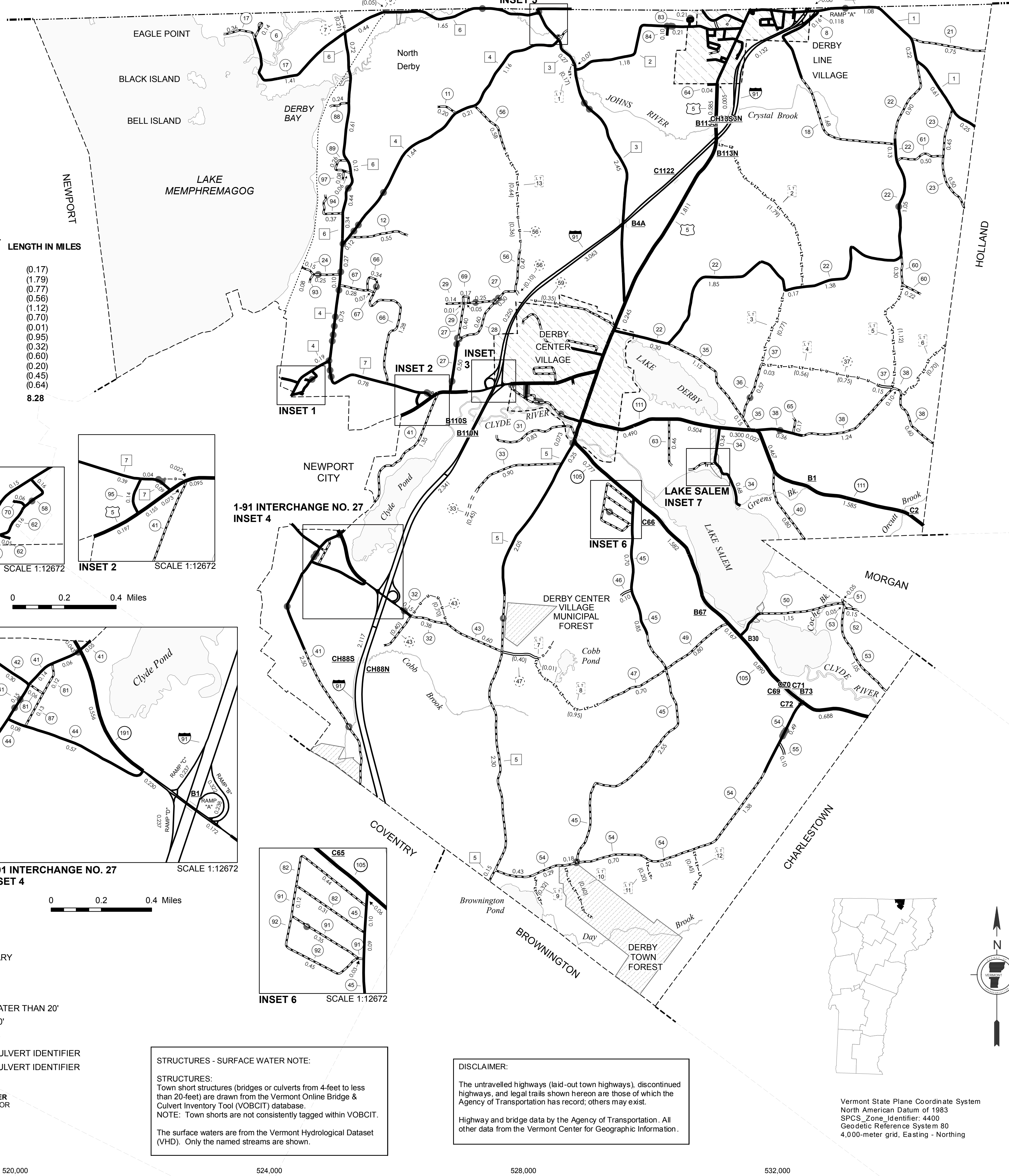
Highway and bridge data by the Agency of Transportation. All other data from the Vermont Center for Geographic Information.



1-91 INTERCHANGE NO. 27 INSET 4

CANADA

BEBEE PLAIN INSET 5



**VERMONT GENERAL HIGHWAY MAP**  
**Town of Derby**

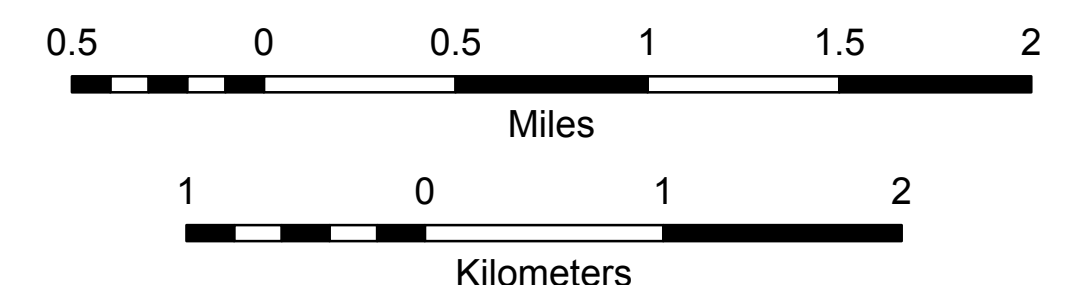
ORLEANS COUNTY

Transportation District #9

Prepared by the  
Vermont Agency of Transportation  
Division of Planning, Outreach  
and Community Affairs  
in cooperation with  
U.S. Department of Transportation  
Federal Highway Administration

Mileage as of February 10, 2010  
Map prepared April 7, 2010

SCALE 1:31,680



Vermont State Plane Coordinate System  
North American Datum of 1983  
SPCS Zone Identifier: 4400  
Geodetic Reference System 80  
4,000-meter grid, Easting - Northing