

TOWN HWY. No.	LENGTH IN MILES CLASS 3	CLASS 4
7	2.56	
8	0.50	
9	1.15	
10	2.49	
11		(0.50)
12	1.30	
13	1.17	(0.58)
14	0.85	
15	0.50	
16	0.10	
17	2.32	
18	0.30	
19	0.80	(0.60)
20	0.56	
21	1.55	
23		(0.65)
24	0.80	
25	1.25	
26	0.25	
27	0.15	(0.66)
28	1.80	
29	0.25	
30	0.45	
31	0.37	(0.33)
32	0.37	
33	1.10	
34	0.12	
35	0.55	
36	0.70	
37	0.10	
38		(0.65)
39	3.10	
40	0.03	
41	3.51	
42	1.47	
43	1.30	
44	2.30	
45		(0.50)
46	0.50	
47	0.60	
48	0.09	
49	0.40	
50	0.10	
51	2.30	
52	0.45	
53	0.11	
54	0.05	
55	0.04	
57	0.08	
59	1.23	
60	0.07	
62	0.21	
63	0.04	
64		(1.65)
<b>TOTAL</b>	<b>42.39</b>	<b>6.12</b>

TOWN HWY. No.	LENGTH IN MILES "NOT UP TO STANDARD"
24	(0.10)
56	(0.03)
57	(0.11)
63	(0.11)
<b>TOTAL</b>	<b>0.35</b>

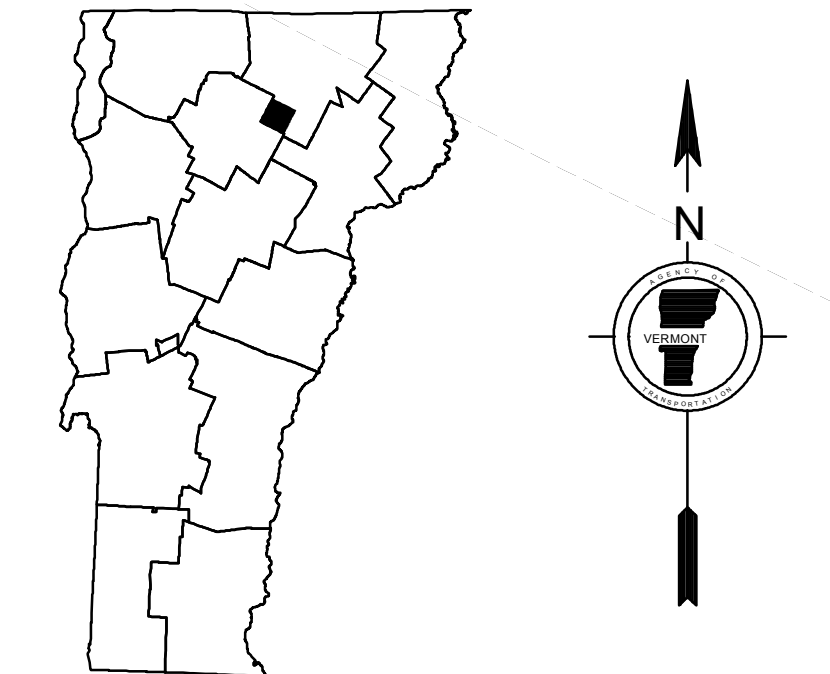
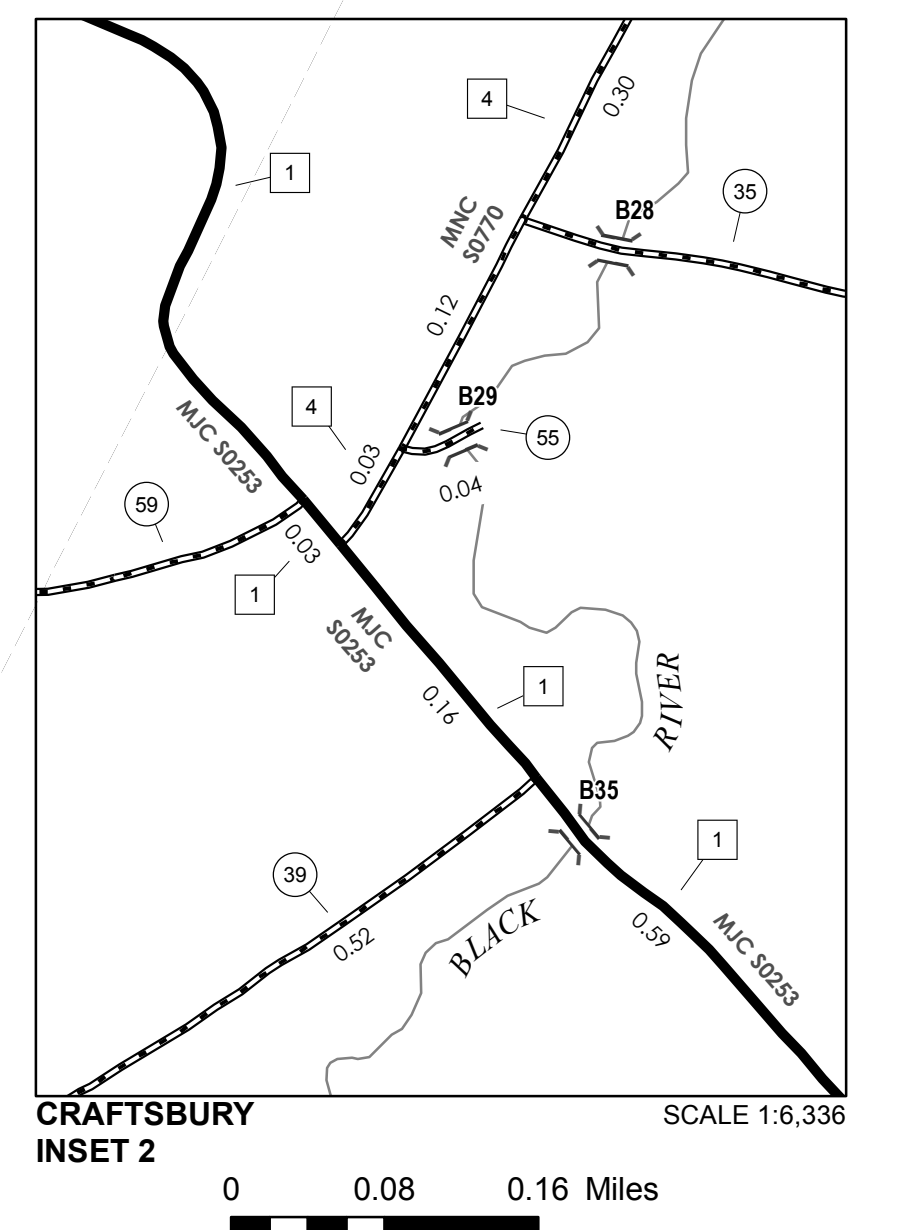
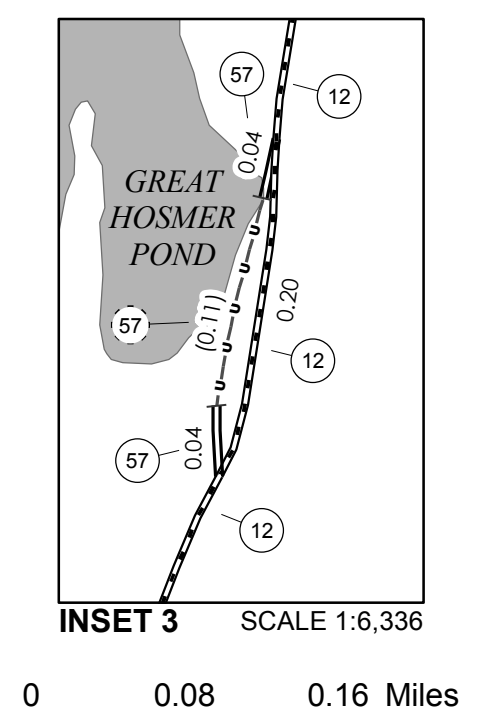
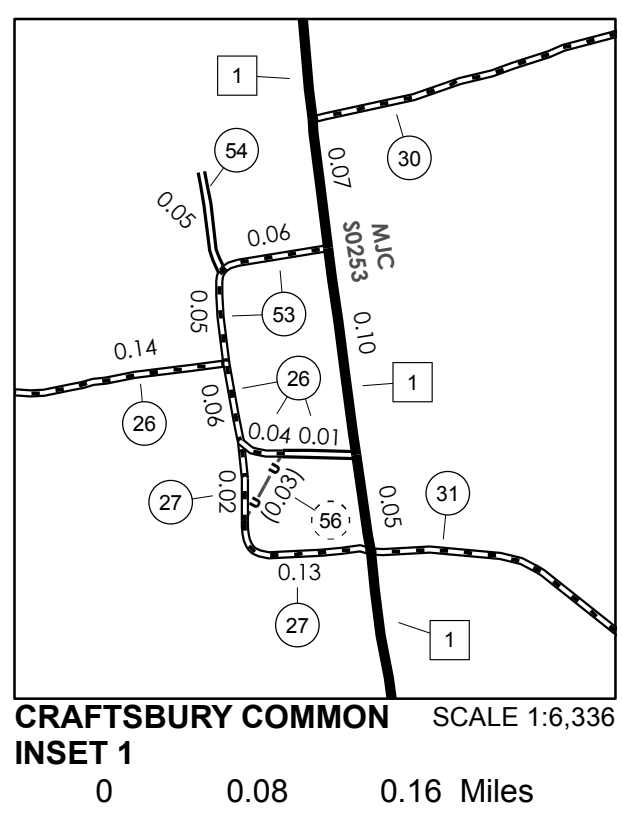
\* The sections of the town highways listed above are legally Class 3, but have been deemed "Not Up To Standard" and are functionally Class 4 Town Highways

LEGAL TRAIL No.	LENGTH IN MILES LEGAL TRAIL
1	(0.08)
2	(2.59)
<b>TOTAL</b>	<b>2.67</b>

**MILEAGE SUMMARY**

CLASS 2		
TH-1	5.450	
TH-2	2.160	
TH-3	3.320	
TH-4	3.800	
TH-5	0.670	
TH-6	2.810	
<b>TOTAL CLASS 2</b>	<b>18.230</b>	
CLASS 3		
<b>TOTAL CLASS 3</b>	<b>42.39</b>	
<b>TOTAL TOWN</b>	<b>60.620</b>	
STATE HIGHWAY		
VT-14	7.962	
<b>TOTAL STATE HIGHWAY</b>	<b>7.962</b>	
<b>TOTAL STATE</b>	<b>7.962</b>	
<b>TOTAL TRAVELED HIGHWAYS, FEB. 10, 2016:</b>	<b>68.582</b>	

(Excludes Class 4 and Legal Trail Mileage)



**VERMONT**  
**GENERAL HIGHWAY MAP**  
**Town of Craftsbury**

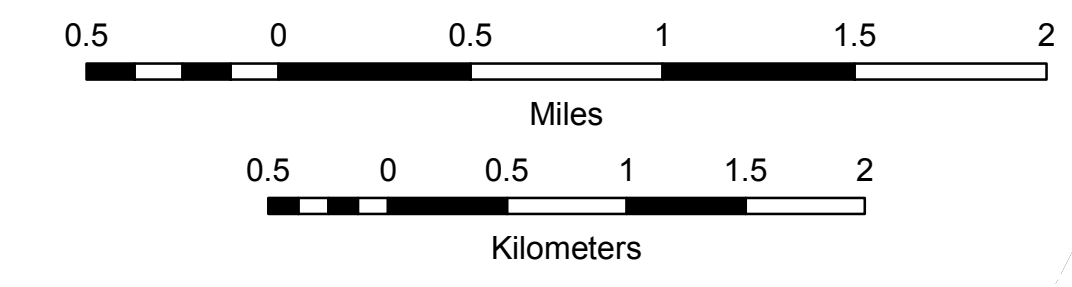
ORLEANS COUNTY

Transportation District #9

Prepared by the  
 Vermont Agency of Transportation  
 Division of Policy, Planning and Intermodal Development  
 in cooperation with  
 U.S. Department of Transportation  
 Federal Highway Administration

Mileage as of February 10, 2016  
 Map prepared July 20, 2016

SCALE 1:31,680



**DISCLAIMER:**  
 The untraveled highways (laid-out town highways), discontinued highways, and legal trails hereon are those of which the Agency of Transportation has record; others may exist.

Highway and bridge data by the Agency of Transportation. Town short structures are drawn from the Vermont Online Bridge & Culvert Inventory Tool (VOBCIT) database. All other data from the Vermont Center for Geographic Information. Only named streams are shown.

Vermont State Plane Coordinate System  
 North American Datum of 1983  
 SPCS\_Zone\_Identifier: 4400  
 Geodetic Reference System 80  
 4,000-meter grid, Easting - Northing