

TOWN HWY. No.	LENGTH IN MILES CLASS 3	CLASS 4
7	2.56	
8	0.50	
9	1.15	
10	2.49	
11		(0.50)
12	1.30	
13	1.17	(0.58)
14	0.85	
15	0.50	
16	0.10	
17	2.32	
18	0.30	
19	0.80	(0.60)
20	0.56	
21	1.55	
23		(0.65)
24	0.80	
25	1.25	
26	0.25	(0.66)
27	0.15	
28	1.80	
29	0.25	
30	0.45	
31	0.37	(0.33)
32	0.37	
33	1.10	
34	0.12	
35	0.55	
36	0.70	
37	0.10	
38		(0.65)
39	3.10	
40	0.03	
41	3.51	
42	1.47	
43	1.30	
44	2.30	
45		(0.50)
46	0.50	
47	0.60	
48	0.09	
49	0.40	
50	0.10	
51	2.30	
52	0.45	
53	0.11	
54	0.05	
55	0.04	
57	0.08	
59	1.23	
60	0.07	
62	0.21	
63	0.15	
TOTAL	42.50	4.47

MILEAGE SUMMARY

CLASS	LENGTH	TOTAL
CLASS 2	5.460	18.240
TH-1	2.180	
TH-2	3.320	
TH-3	3.800	
TH-4	0.670	
TH-5	2.810	
TOTAL CLASS 2	18.240	
CLASS 3	42.500	42.500
TOTAL CLASS 3	42.500	
TOTAL TOWN	60.740	
STATE HIGHWAY	7.962	7.962
VT-14	7.962	7.962
TOTAL STATE HIGHWAY	7.962	
TOTAL STATE	7.962	

TOTAL, TRAVELED HIGHWAYS, FEB. 10, 2012: 68.702
 (Excludes Class 4, Legal Trail, and Unidentified Corridor Mileage)

TOWN HWY. No.	LENGTH IN MILES "NOT UP TO STANDARD"
24	(0.10)
56	(0.03)
57	(0.11)
TOTAL	0.24

* The sections of the town highways listed above are legally Class 3, but have been deemed "Not Up To Standard" and are functionally Class 4 Town Highways

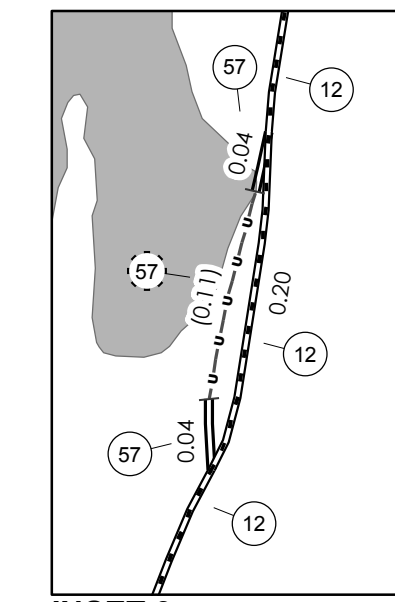
LEGAL TRAIL No.	LENGTH IN MILES LEGAL TRAIL
1	(0.08)
TOTAL	0.08

- HIGHWAYS**
- INTERSTATE OR DIVIDED HIGHWAY
 - STATE - HARD SURFACE OR PAVED
 - TOWN - HARD SURFACE OR PAVED
 - GRAVEL
 - SOIL OR GRADED AND DRAINED EARTH
 - UNIMPROVED OR PRIMITIVE
 - IMPASSABLE OR UNTRAVELED
 - LEGAL TRAIL
 - DISCONTINUED
 - HIGHWAY CLASS CHANGE
 - RAILROAD
 - INACTIVE RAILROAD
 - PARK AND RIDE
- POLITICAL SUBDIVISIONS**
- STATE BOUNDARY
 - COUNTY BOUNDARY
 - TOWN BOUNDARY
 - VILLAGE BOUNDARY
 - URBAN COMPACT BOUNDARY
 - WATER BODY
 - STREAM OR BROOK
- BRIDGE OR CULVERT**
- BRIDGE OR CULVERT GREATER THAN 20'
 - BRIDGE OR CULVERT 6' - 20'
- FEDERAL CLASSIFICATION IDENTIFIER**
- FAU URBAN ARTERIAL OR COLLECTOR
 - MA MINOR ARTERIAL
 - MJC MAJOR COLLECTOR
 - MNC MINOR COLLECTOR
 - PA PRINCIPAL ARTERIAL
- B34 / C34 STATE BRIDGE OR CULVERT IDENTIFIER**
- B34 / C34 TOWN BRIDGE OR CULVERT IDENTIFIER**

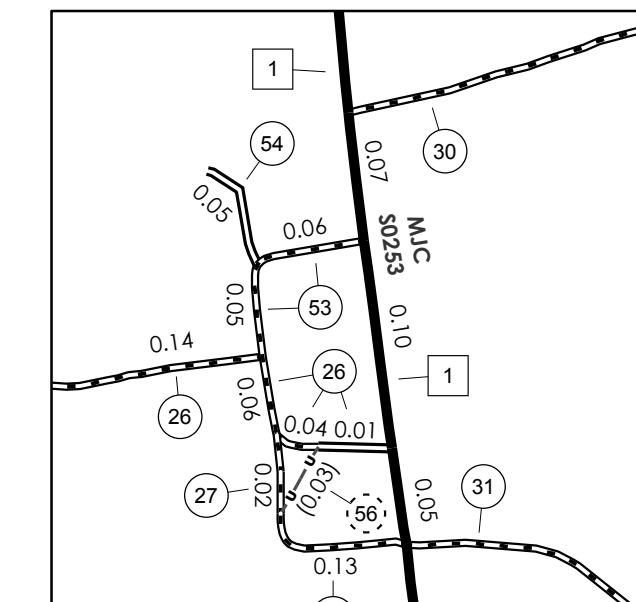
DISCLAIMER:
 The untraveled highways (laid-out town highways), discontinued highways, and legal trails herein are those of which the Agency of Transportation has record; others may exist.

Highway and bridge data by the Agency of Transportation. All other data from the Vermont Center for Geographic Information. Only named streams are shown.

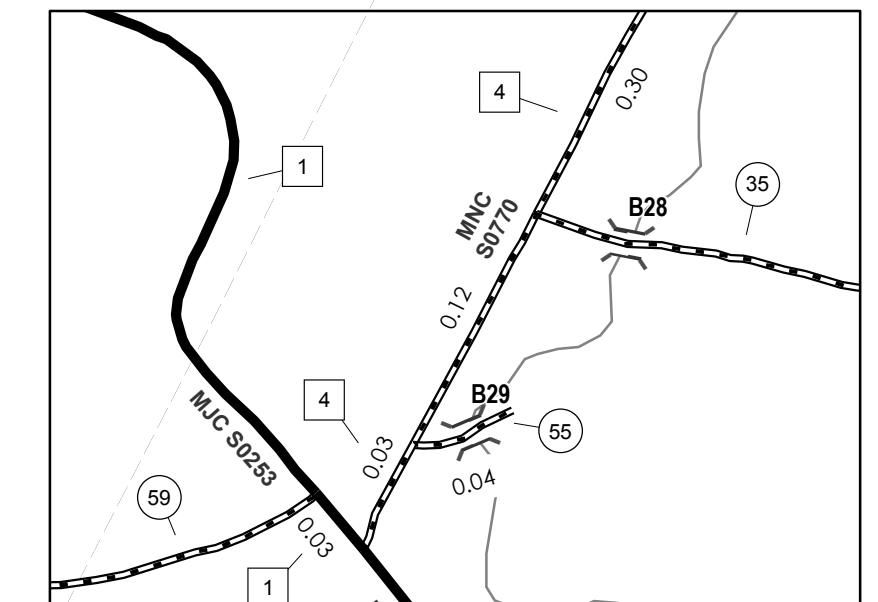
Vermont State Plane Coordinate System
 North American Datum of 1983
 SPCS_Zone_Identifier: 4400
 Geodetic Reference System 80
 4,000-meter grid, Easting - Northing



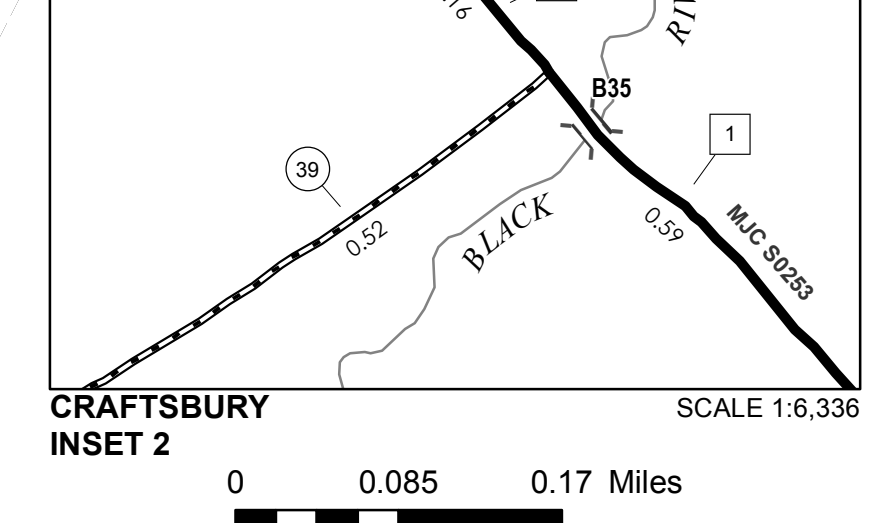
INSET 3 SCALE 1:6,336



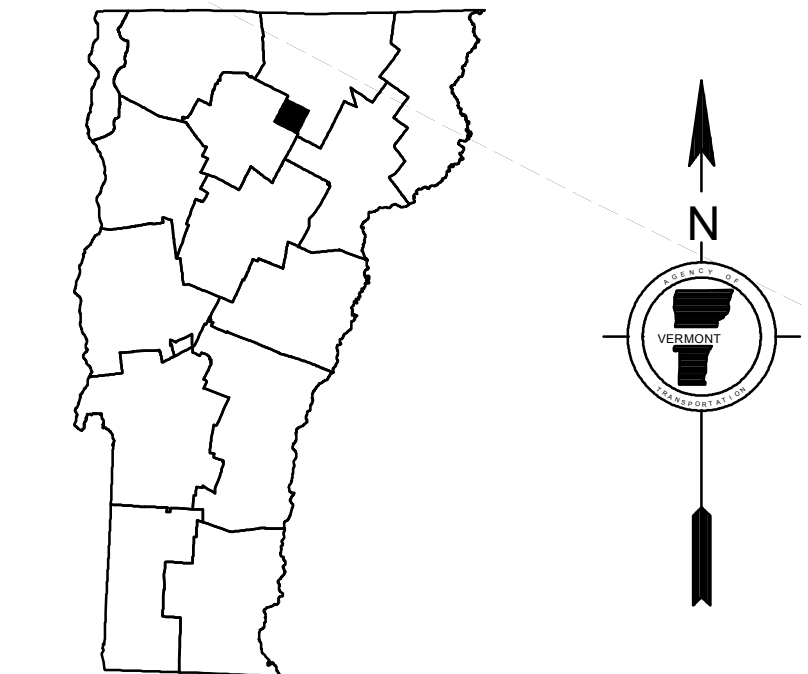
CRAFTSBURY COMMON INSET 1 SCALE 1:6,336



CRAFTSBURY INSET 2 SCALE 1:6,336



0 0.085 0.17 Miles



VERMONT
GENERAL HIGHWAY MAP
Town of Craftsbury
 ORLEANS COUNTY
 Transportation District #9
 Prepared by the
 Vermont Agency of Transportation
 Division of Policy, Planning and Intermodal Development
 in cooperation with
 U.S. Department of Transportation
 Federal Highway Administration

