

TOWN HWY. NO.	LENGTH IN MILES	CLASS 3	CLASS 4
4			(0.20)
5			(1.00)
6			(0.55)
7			(1.50)
8	0.90		(1.00)
9			(0.30)
10	2.28		
11	5.44		
12	1.55		
13	0.20		
14	3.65		
15			(0.55)
16			(1.55)
17	0.75		(0.95)
18	0.80		(1.60)
19	1.47		(1.38)
20	0.32		(0.08)
21	2.10		
22			(0.90)
23	0.03		(1.00)
23			(0.05)
24			(0.90)
25	0.88		(0.62)
26	1.32		
27	1.53		
28	0.45		
29			(0.15)
30	0.25		
31	0.06		
32	0.73		(0.92)
33	0.27		(1.43)
34	1.60		
35	1.55		
36	0.25		(0.45)
37	0.20		
38	0.33		
39			(1.10)
40	1.10		
41	0.15		
42	0.16		
44	0.29		
45			(0.80)
TOTAL	30.61	18.98	

MILEAGE SUMMARY

CLASS 2			
TH-1	6.570		
TH-2	4.440		
TH-3	5.030		
TOTAL CLASS 2	16.040		
CLASS 3			
TOTAL CLASS 3	30.610		
TOTAL TOWN	46.650		
STATE HIGHWAY			
VT-14	6.722		
TOTAL STATE HIGHWAY	6.722		
TOTAL STATE	6.722		

TOTAL, TRAVELED HIGHWAYS, FEB. 10, 2011: 53.372
(Excludes Class 4, Legal Trail, and Unidentified Corridor Mileage)

* This portion of town highway is Class 3, but is functionally Class 4

HIGHWAYS

- INTERSTATE
- U.S. ROUTE
- STATE ROUTE
- CLASS 1
- CLASS 2
- CLASS 3
- CLASS 4
- LEGAL TRAIL
- INTERSTATE OR DIVIDED HIGHWAY
- STATE - HARD SURFACE OR PAVED
- TOWN - HARD SURFACE OR PAVED
- GRAVEL
- SOIL OR GRADED AND DRAINED EARTH
- UNIMPROVED OR PRIMITIVE
- IMPASSABLE OR UNTRAVELED
- LEGAL TRAIL
- DISCONTINUED
- HIGHWAY CLASS CHANGE
- RAILROAD
- INACTIVE RAILROAD

POLITICAL SUBDIVISIONS

- STATE BOUNDARY
- COUNTY BOUNDARY
- TOWN BOUNDARY
- VILLAGE BOUNDARY
- URBAN COMPACT BOUNDARY
- WATER BODY
- STREAM OR BROOK
- BRIDGE OR CULVERT
- BRIDGE OR CULVERT GREATER THAN 20'
- BRIDGE OR CULVERT 6' - 20'
- TOWN SHORT STRUCTURE

B34 / C34 STATE BRIDGE OR CULVERT IDENTIFIER
B34 / C34 TOWN BRIDGE OR CULVERT IDENTIFIER

FEDERAL CLASSIFICATION IDENTIFIER
FAU URBAN ARTERIAL OR COLLECTOR
MA MINOR ARTERIAL
MJC MAJOR COLLECTOR
MNC MINOR COLLECTOR
PA PRINCIPAL ARTERIAL

STRUCTURES - SURFACE WATER NOTE:

STRUCTURES:
Town short structures (bridges or culverts from 6-feet to less than 20-feet) are drawn from the Vermont Online Bridge & Culvert Inventory Tool (VOBCIT) database.
NOTE: Town shorts are not consistently tagged within VOBCIT.

SURFACE WATERS:
The surface waters are from the Vermont Hydrological Dataset (VHD). Only the named streams are shown.

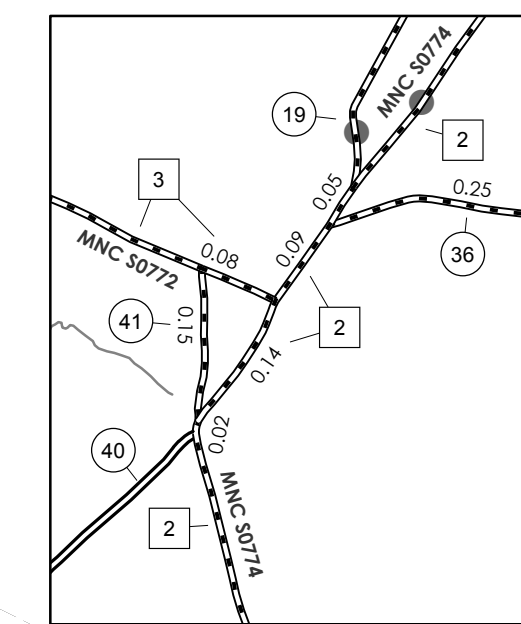
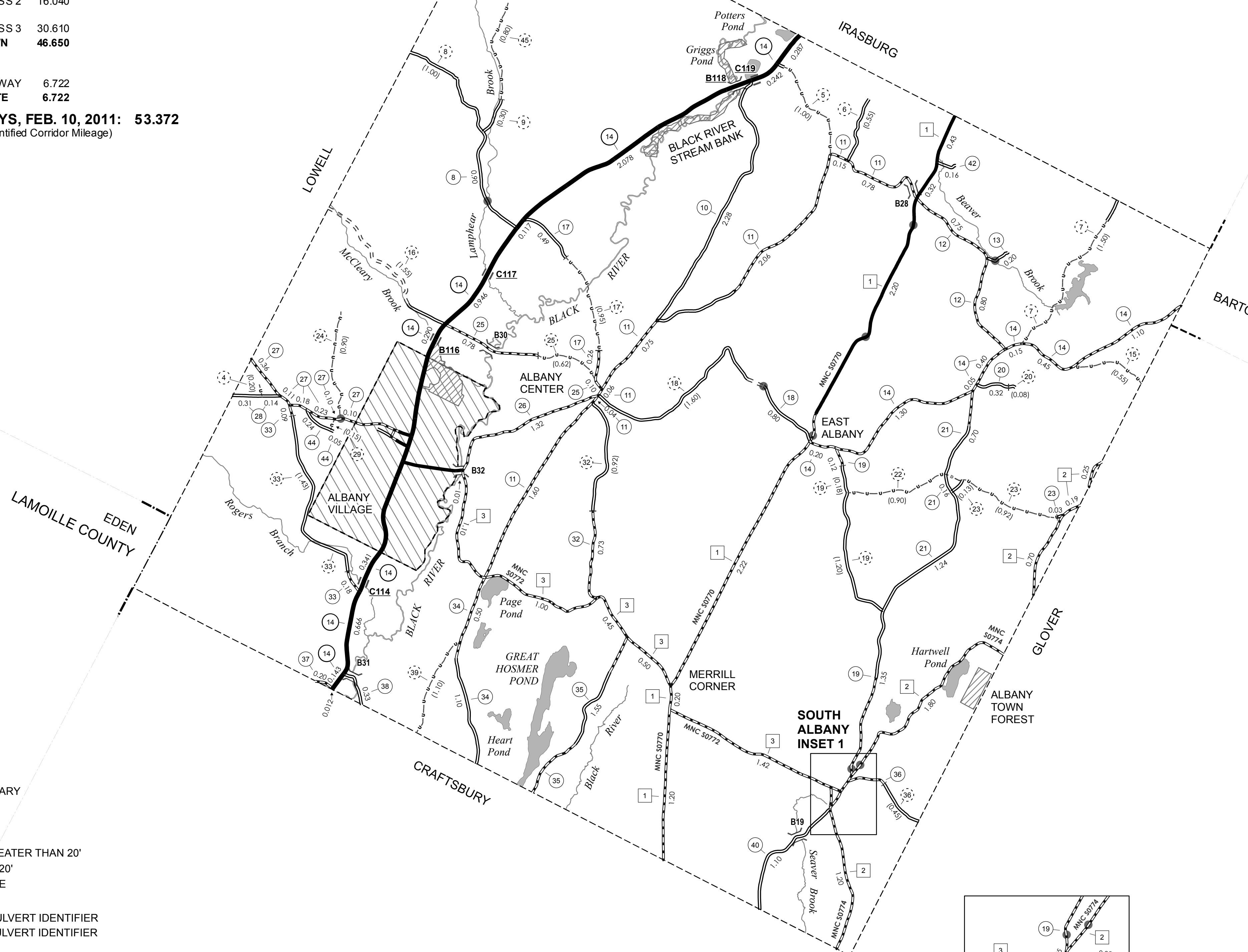
DISCLAIMER:

The untraveled highways (laid-out town highways), discontinued highways, and legal trails shown hereon are those of which the Agency of Transportation has record; others may exist.

Highway and bridge data by the Agency of Transportation. All other data from the Vermont Center for Geographic Information.

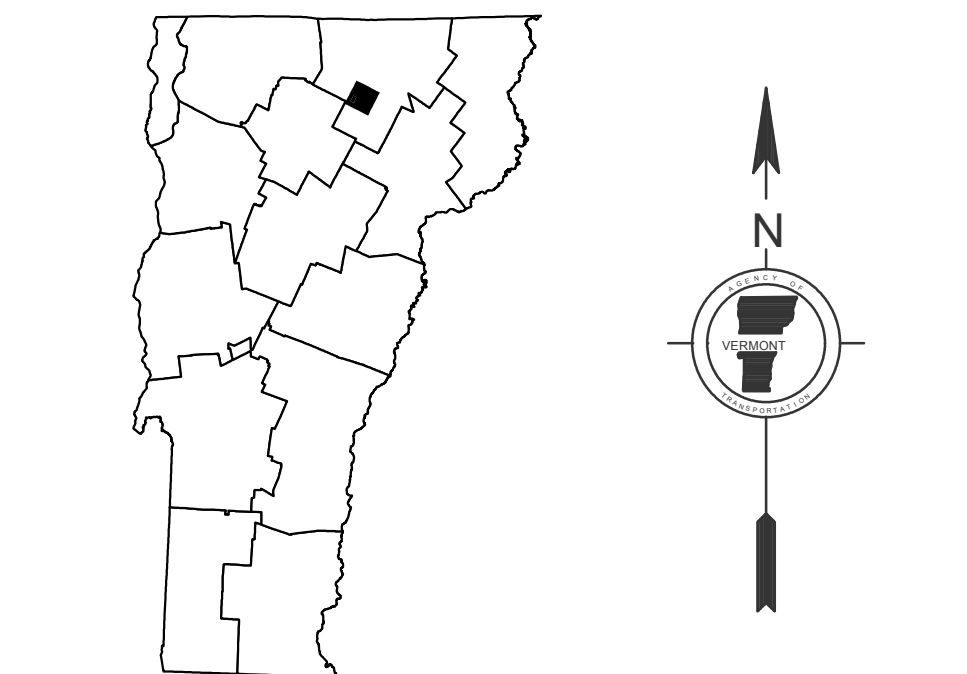
Vermont State Plane Coordinate System
North American Datum of 1983
SPCS Zone Identifier: 4400
Geodetic Reference System 80
4,000-meter grid, Easting - Northing

LOWELL
IRASBURG
BARTON
LAMOILLE COUNTY
EDEN
CRAFTSBURY
GLOVER



SOUTH ALBANY INSET 1

INSET SCALE 1:12672



VERMONT GENERAL HIGHWAY MAP
Town of Albany

ORLEANS COUNTY
Transportation District #9
Prepared by the
Vermont Agency of Transportation
Division of Policy, Planning & Intermodal Development
in cooperation with
U.S. Department of Transportation
Federal Highway Administration

Mileage as of February 10, 2011
Map prepared October 26, 2011

