

TOWN HWY. No.	LENGTH IN MILES CLASS 3	LENGTH IN MILES CLASS 4	TOWN HWY. No.	LENGTH IN MILES CLASS 3	LENGTH IN MILES CLASS 4	TOWN HWY. No.	LENGTH IN MILES CLASS 3	LENGTH IN MILES CLASS 4
7		(0.21)	55	0.18		312	0.03	
8	0.93		56	0.59		314	0.04	
9	1.03		59	3.46		316	0.09	
10	0.10		60	0.55		318	0.77	
11	0.76		61	0.81	(0.09)	320		(0.25)
12	0.17		62	0.11		322		
13	0.56		63	0.16	(0.45)	324		
14	0.12		64	0.18		326		
15	1.05		65	0.15		328		
16	0.10		66	0.54		330		
17	0.07		67	1.06		332		
19	0.14		68	3.53		334		
20		(0.18)	70	0.10		336		
22	0.05		71	3.76		338		
23	0.08		72	2.65		340		
24	1.16		73	0.51		342		
25	0.17		74	2.12		344		
26	3.48		75	0.45		346		
28	2.42		76	0.14		348		(0.14)
29	0.50		78	2.29		354		
30	1.60		79	0.79		356		
31	1.07		80	0.10		358		
32	0.10		81	0.24		360		
33	1.54		83	0.21		362		
34	0.40		84	0.05		364		
35	0.25		85		(0.08)	366		
36	0.67		86		(0.15)	368		
37	0.10		87	0.13		372		
38	0.03		89	0.15		374		
39	0.08		90	1.00		376		
40	0.64		91	0.06		378		
41	0.30		92	0.23		380		
42	0.75		94	0.33		382		
43	1.19		95	0.08		384		
44	1.22		97	0.24		386		
45	0.83		98	0.16		390		
46	0.59		99	0.10		394		
47	0.40		100	0.27		396		
48	4.02		300	0.03		398		
49	0.27		302	0.11		400		
50	0.61		304	0.17		404		
51	1.70		305	0.81		406		
52	2.51		306	0.15		408		
53	1.48		308	0.06		410		
54	0.36		310	0.18		TOTAL	72.67	1.55

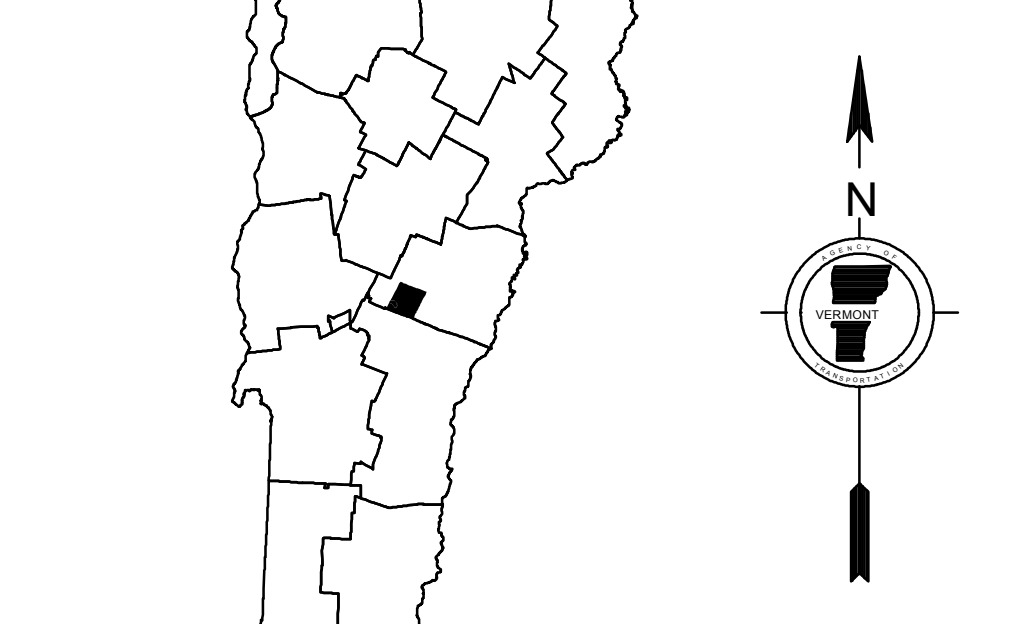
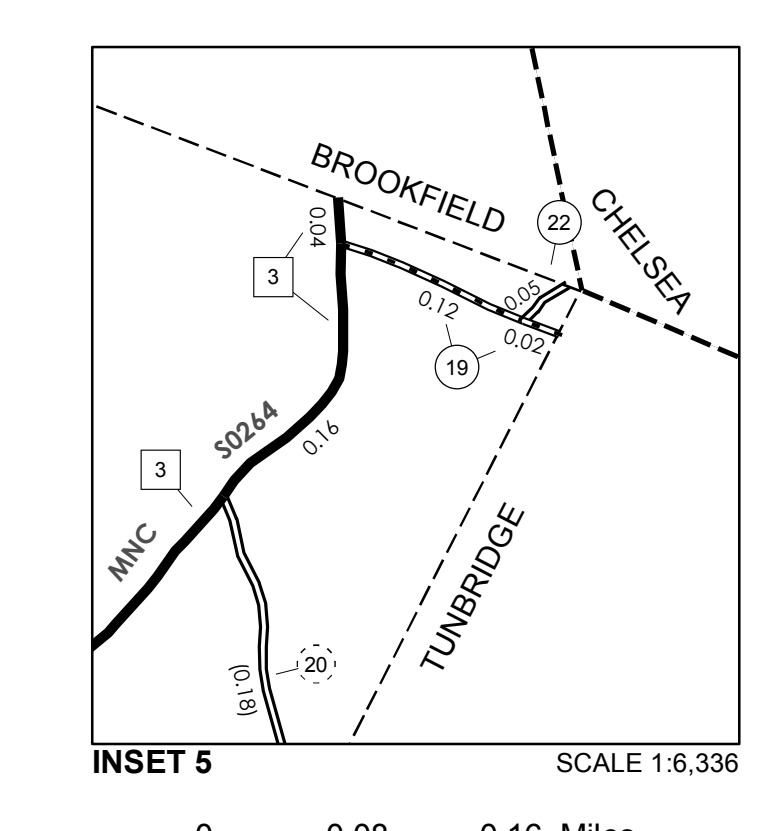
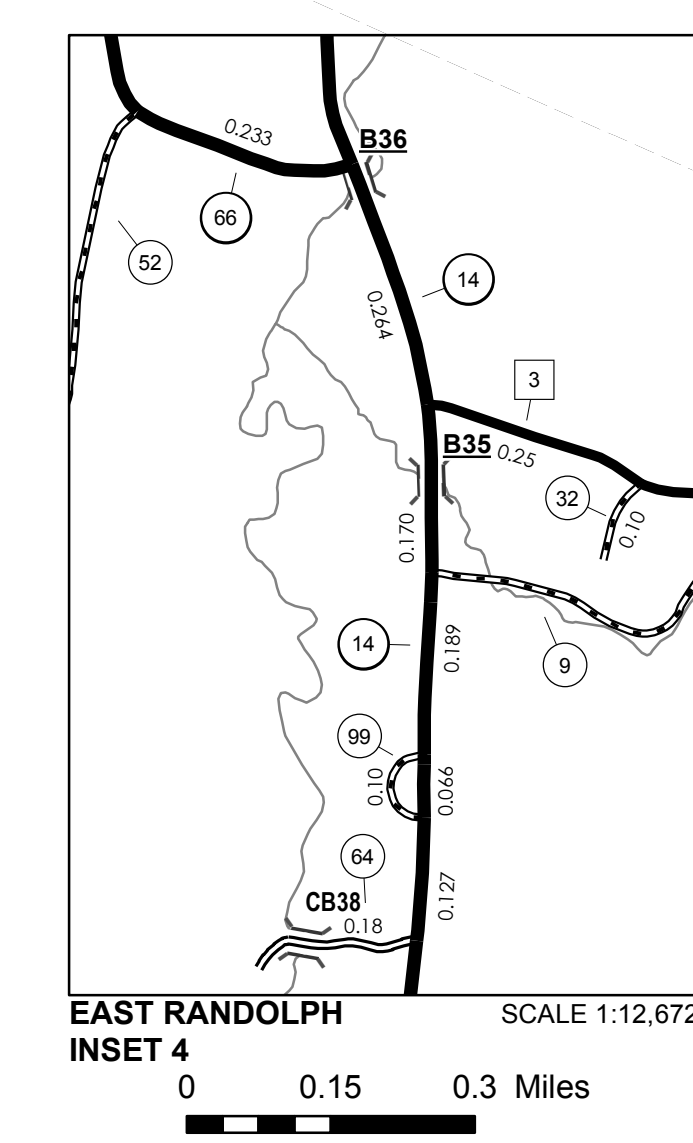
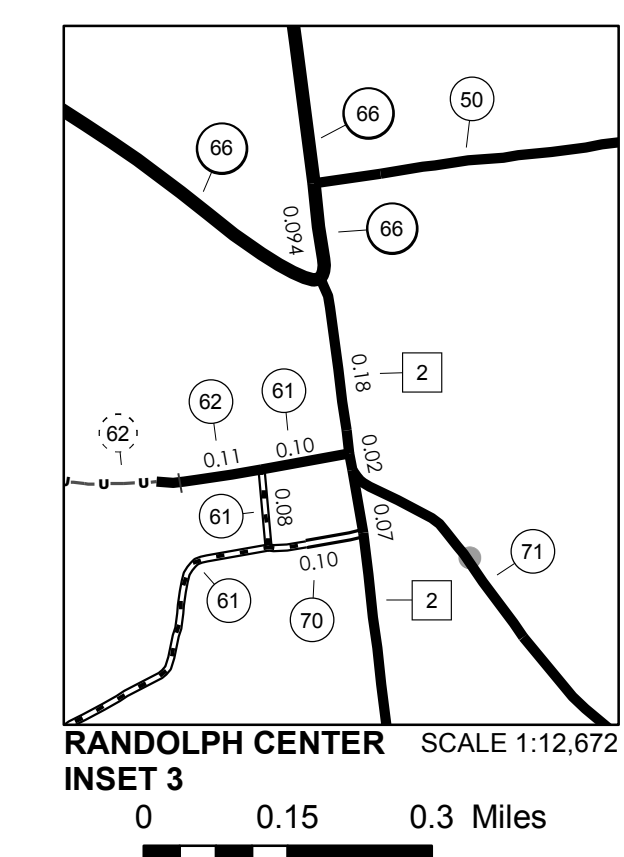
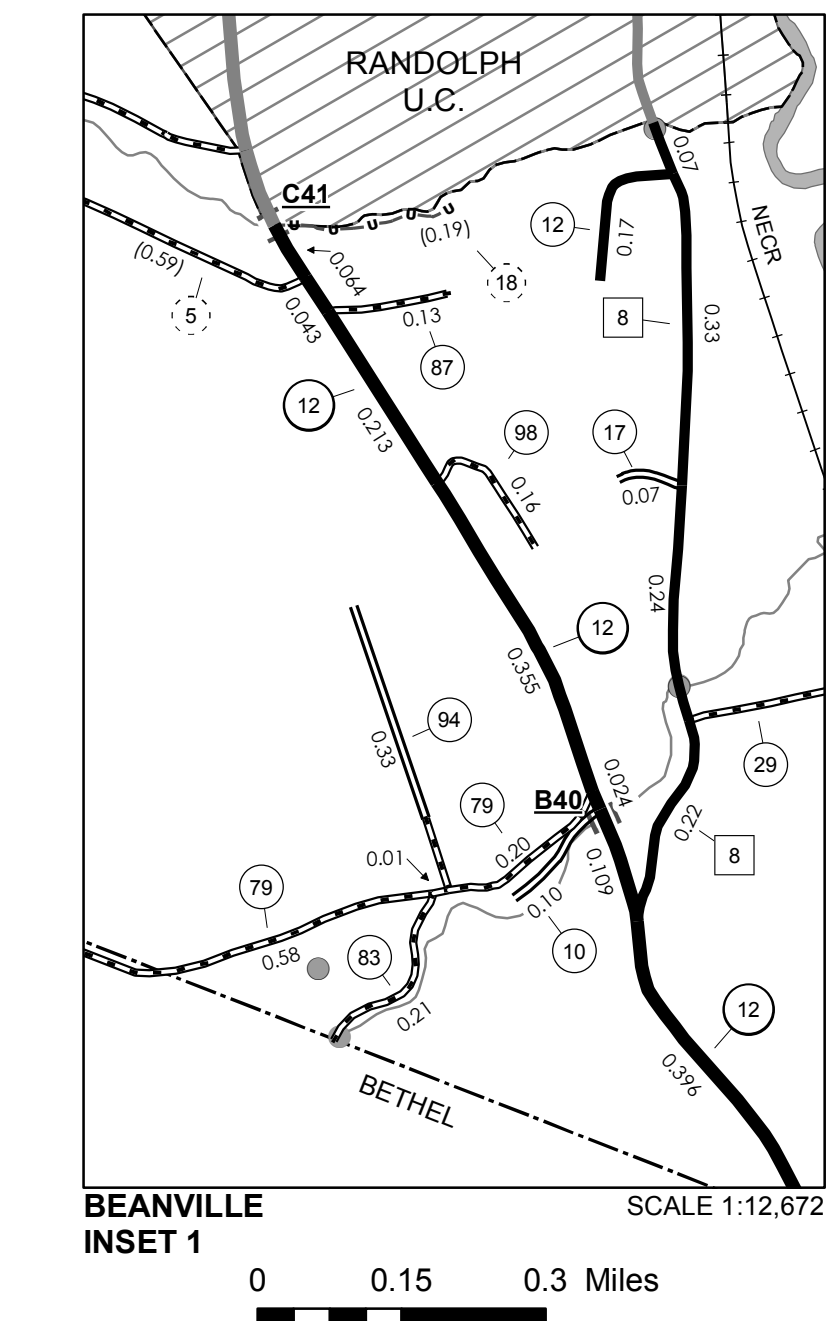
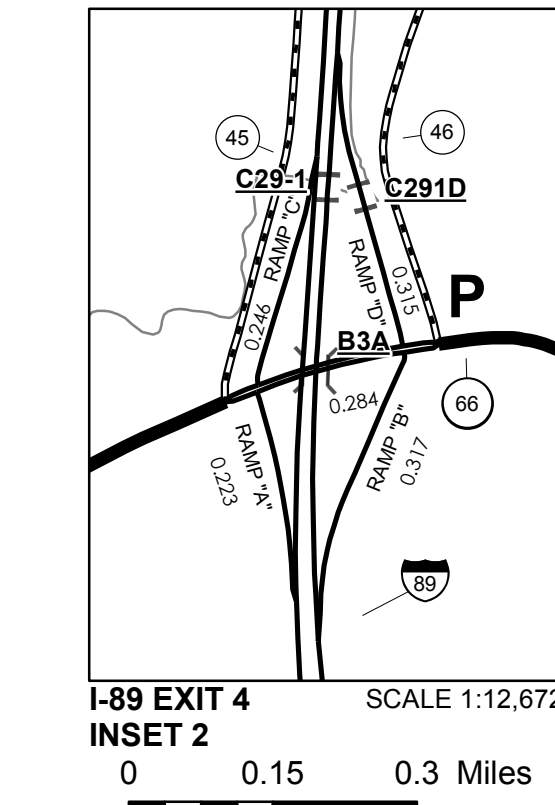
TOWN HWY. No.	LENGTH IN MILES "NOT UP TO STANDARD"	LEGAL TRAIL No.	LENGTH IN MILES LEGAL TRAIL
5	(0.59)	1	(0.97)
18	(0.19)	2	(0.62)
61	(0.06)	3	(0.05)
89	(0.10)	5	(0.40)
TOTAL	0.94	6	(1.42)
		7	(1.02)
		8	(0.87)
		TOTAL	5.35

MILEAGE SUMMARY

CLASS	TOWN	STATE
CLASS 1		
TH-1	1,603	
TH-2	0,398	
TH-3	0,429	
TH-4	0,030	
TOTAL CLASS 1	2,460	
CLASS 2		
TH-1	3,310	
TH-2	4,930	
TH-3	3,560	
TH-4	0,100	
TH-6	0,470	
TH-7	0,450	
TH-8	1,850	
TOTAL CLASS 2	14,670	
CLASS 3		
TOTAL CLASS 3	72.67	
TOTAL TOWN	89,800	
STATE HIGHWAY		
VT-12	5,155	
VT-12A	0,877	
VT-14	7,734	
VT-66	7,192	
TOTAL STATE HIGHWAY	20,958	
TOTAL STATE	20,958	
INTERSTATE		
I-89	7,889	
TOTAL INTERSTATE	7,889	
INTERSTATE - Ramps		
I-89	1,101	
TOTAL INTERSTATE - Ramps	1,101	
TOTAL INTERSTATE	8,990	

TOTAL, TRAVELED HIGHWAYS, FEB. 10, 2015: 119,748
 (Excludes Class 4, Legal Trail, and Unidentified Corridor Mileage)

- HIGHWAYS**
- INTERSTATE OR DIVIDED HIGHWAY
 - STATE - HARD SURFACE OR PAVED
 - TOWN - HARD SURFACE OR PAVED
 - GRAVEL
 - SOIL OR GRADED AND DRAINED EARTH
 - UNIMPROVED OR PRIMITIVE
 - IMPASSABLE OR UNTRAVELED
 - LEGAL TRAIL
 - DISCONTINUED
 - HIGHWAY CLASS CHANGE
 - RAILROAD
 - INACTIVE RAILROAD
 - NATIONAL FOREST ROAD
 - STATE FOREST HIGHWAY
 - PARK AND RIDE
- PUBLIC LAND - GREEN MOUNTAIN NATIONAL FOREST**
- PUBLIC LAND - STATE/MUNICIPAL
- POLITICAL SUBDIVISIONS**
- STATE BOUNDARY
 - COUNTY BOUNDARY
 - TOWN BOUNDARY
 - VILLAGE BOUNDARY
 - URBAN COMPACT BOUNDARY
 - WATER BODY
 - STREAM OR BROOK
- BRIDGE OR CULVERT**
- BRIDGE OR CULVERT > 20'
 - BRIDGE OR CULVERT 6' - 20'
 - VOBCIT BRIDGE
 - VOBCIT CULVERT > 6'
 - STATE BRIDGE OR CULVERT IDENTIFIER
 - TOWN BRIDGE OR CULVERT IDENTIFIER
- FEDERAL CLASSIFICATION IDENTIFIER**
- FAU URBAN ARTERIAL OR COLLECTOR
 - MA MINOR ARTERIAL
 - MJC MAJOR COLLECTOR
 - MNC MINOR COLLECTOR
 - PA PRINCIPAL ARTERIAL



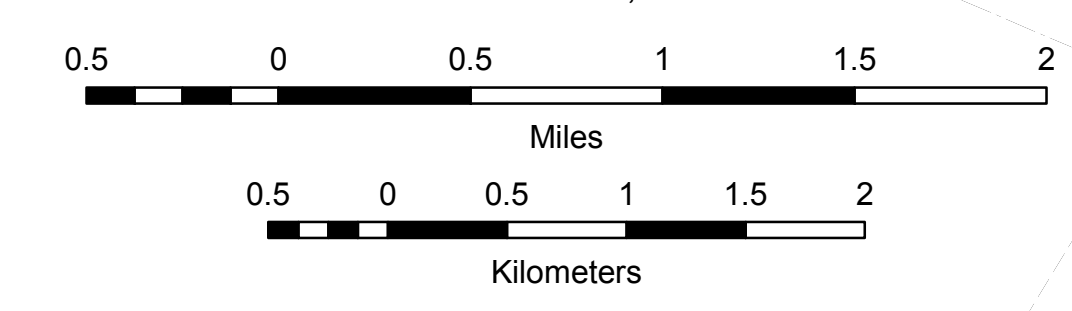
VERMONT
GENERAL HIGHWAY MAP
Town of Randolph

ORANGE COUNTY

Transportation District #4
 Prepared by the
 Vermont Agency of Transportation
 Division of Policy, Planning and Intermodal Development
 in cooperation with
 U.S. Department of Transportation
 Federal Highway Administration

Mileage as of February 10, 2015
 Map prepared June 11, 2015

SCALE 1:31,680



DISCLAIMER:
 The untraveled highways (laid-out town highways), discontinued highways, and legal trails herein are those of which the Agency of Transportation has record; others may exist.

Highway and bridge data by the Agency of Transportation. Town short structures are drawn from the Vermont Online Bridge & Culvert Inventory Tool (VOBCIT) database. All other data from the Vermont Center for Geographic Information. Only named streams are shown.