

TOWN HWY. NO.	LENGTH IN MILES CLASS 3	LENGTH IN MILES CLASS 4	LEGAL TRAIL NO.	LENGTH IN MILES	TOTAL
5		(0.59)	310	0.18	
7		(0.21)	56	0.59	
8	0.93		59	3.46	
9	1.03		60	0.55	
10	0.10		61	0.81	(0.09)
11	0.76		62	0.11	(0.06)
12	0.17		63	0.16	(0.45)
13	0.56		64	0.18	
14	0.12		65	0.15	
15	1.05		66	0.54	
16	0.10		67	1.06	
17	0.07		68	3.53	
18		(0.19)	69		(1.02)
19	0.14		70	0.10	
20		(0.18)	71	3.76	
22	0.05		72	2.65	
23	0.08		73	2.51	
24	1.16		74	0.12	
25	0.17		75	0.45	(0.14)
26	3.48		76	0.14	
28	2.42		77	2.29	
29	0.50		78	0.79	
30	1.60		79	0.10	
31	1.07		80	0.24	
32	0.10		81	0.21	
33	1.54		82	0.05	
34	0.40		83	0.05	
35	0.25		84	0.05	(0.08)
36	0.67		85	0.13	(0.15)
37	0.10		86	0.15	
38	0.03		87	1.00	(0.10)
39	0.08		88	0.06	
40	0.64		89	0.23	
41	0.30		90	0.33	
42	0.75		91	0.08	
43	1.19		92	0.24	
44	1.22		93	0.16	
45	0.83		94	0.10	
46	0.59		95	0.16	
47	0.40		96	0.03	
48	4.02		97	0.27	
49	0.27		98	0.03	
50	0.61		99	0.11	
51	1.70		100	0.17	
52	2.51		302	0.81	
53	1.48		304	0.15	
54	0.36		306	0.06	
			308	0.06	
			TOTAL	72.62	3.51

* This portion of town highway is Class 3, but is functionally Class 4

MILEAGE SUMMARY

CLASS	LENGTH IN MILES	TOTAL
CLASS 1		
TH-1	1.603	
TH-2	0.398	
TH-3	0.429	
TH-4	0.030	
TOTAL CLASS 1	2.460	
CLASS 2		
TH-1	3.310	
TH-2	4.930	
TH-3	3.560	
TH-4	0.100	
TH-6	0.470	
TH-7	0.450	
TH-8	1.850	
TOTAL CLASS 2	14.670	
CLASS 3		
TOTAL CLASS 3	72.620	
TOTAL TOWN	89.750	
STATE HIGHWAY		
VT-12	5.155	
VT-12A	0.877	
VT-14	7.734	
VT-66	7.192	
TOTAL STATE HIGHWAY	20.958	
TOTAL STATE	20.958	
INTERSTATE		
I-89	7.889	
TOTAL INTERSTATE	7.889	
INTERSTATE - Ramp		
I-89	1.101	
TOTAL INTERSTATE - Ramp	1.101	
TOTAL INTERSTATE	8.990	

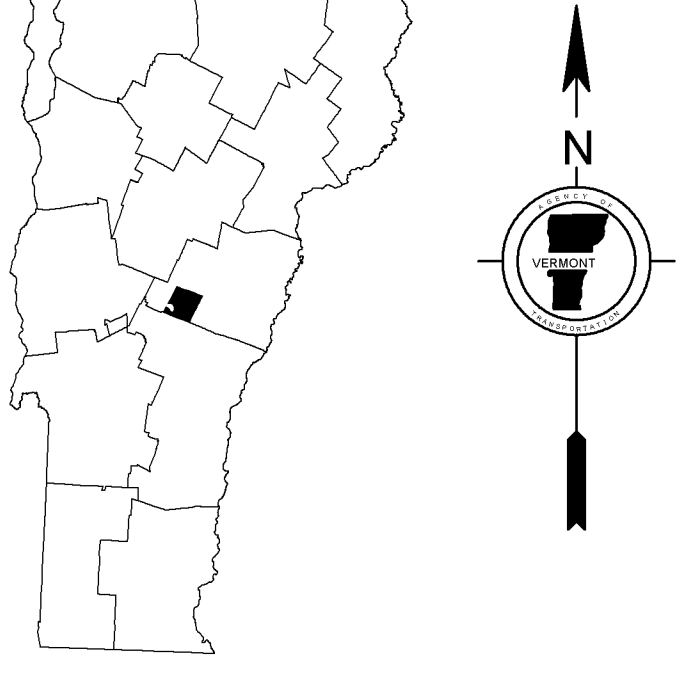
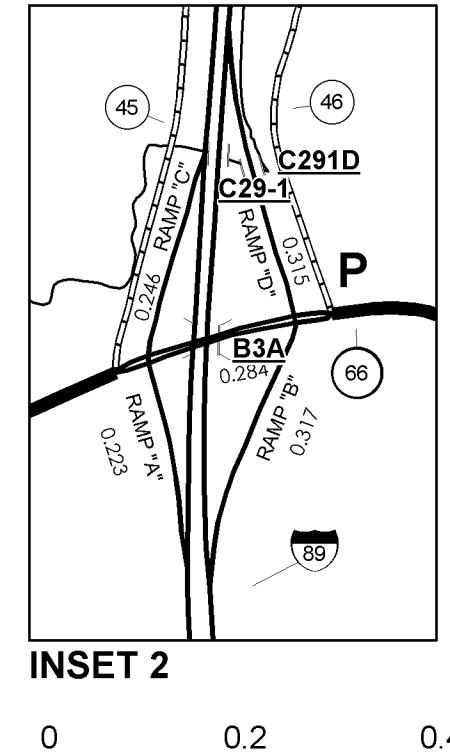
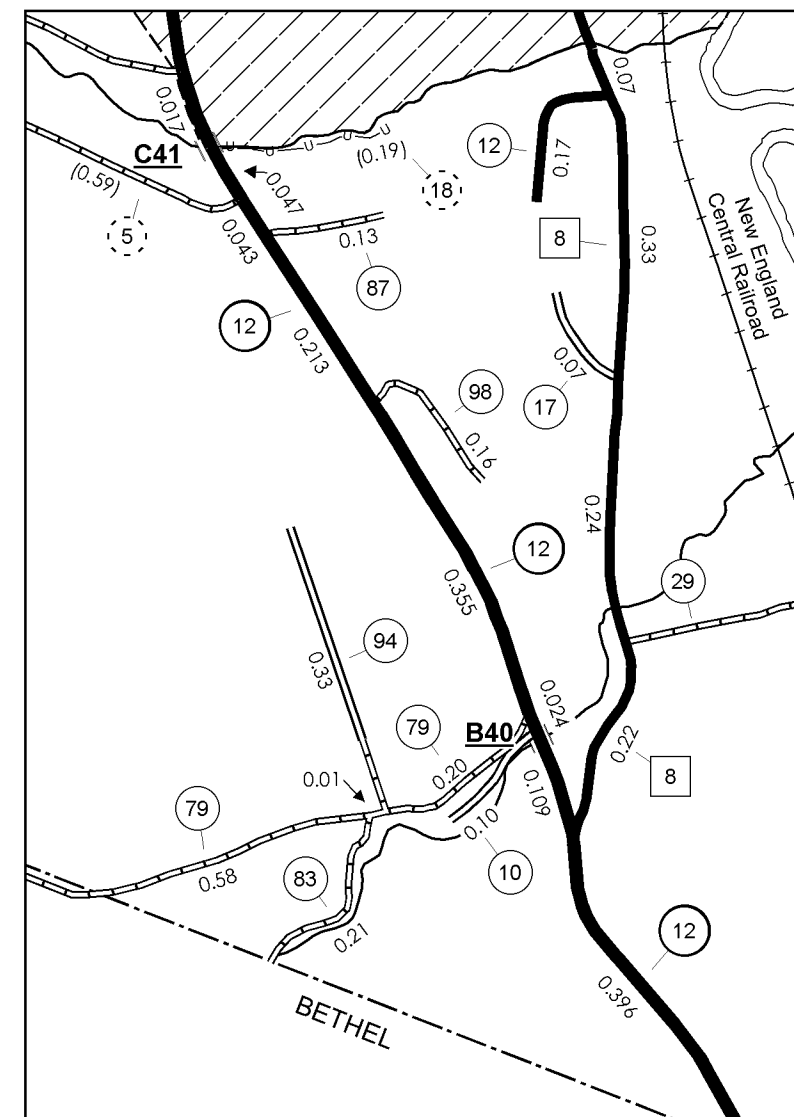
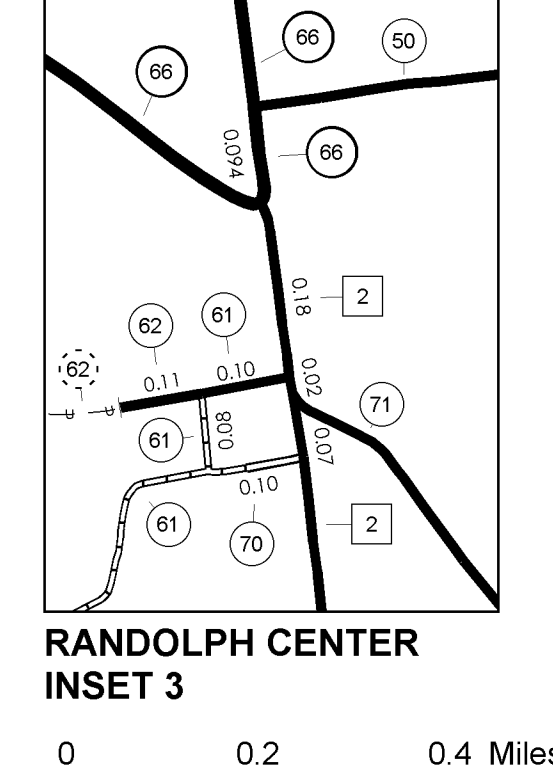
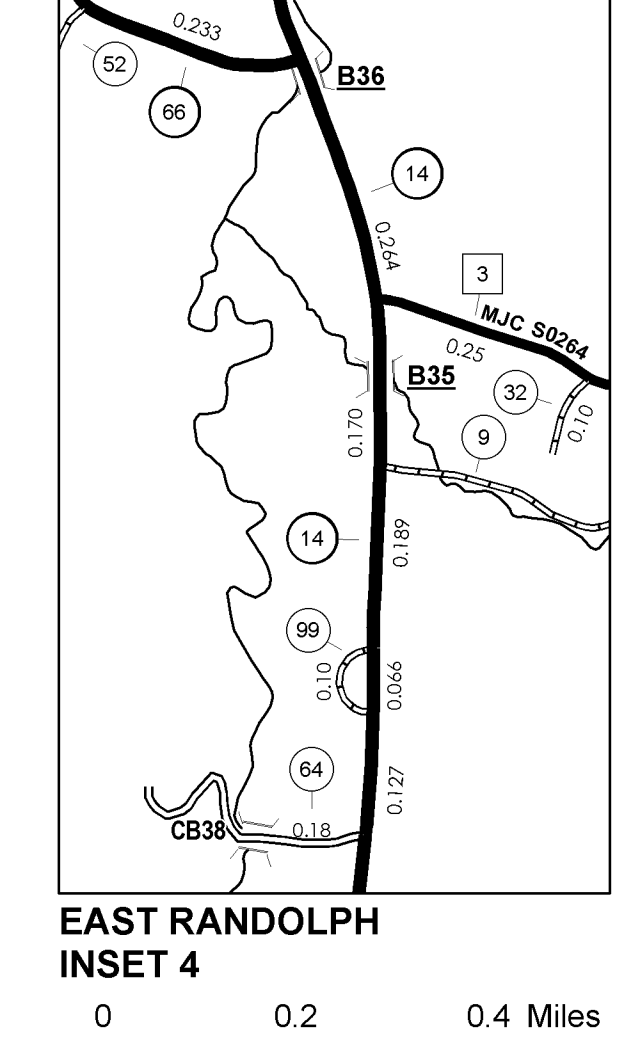
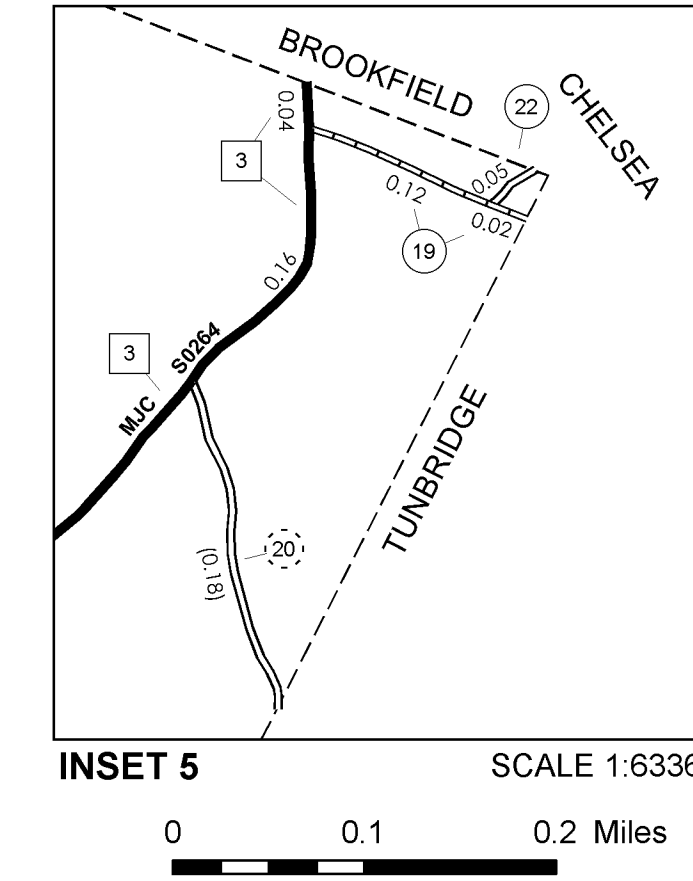
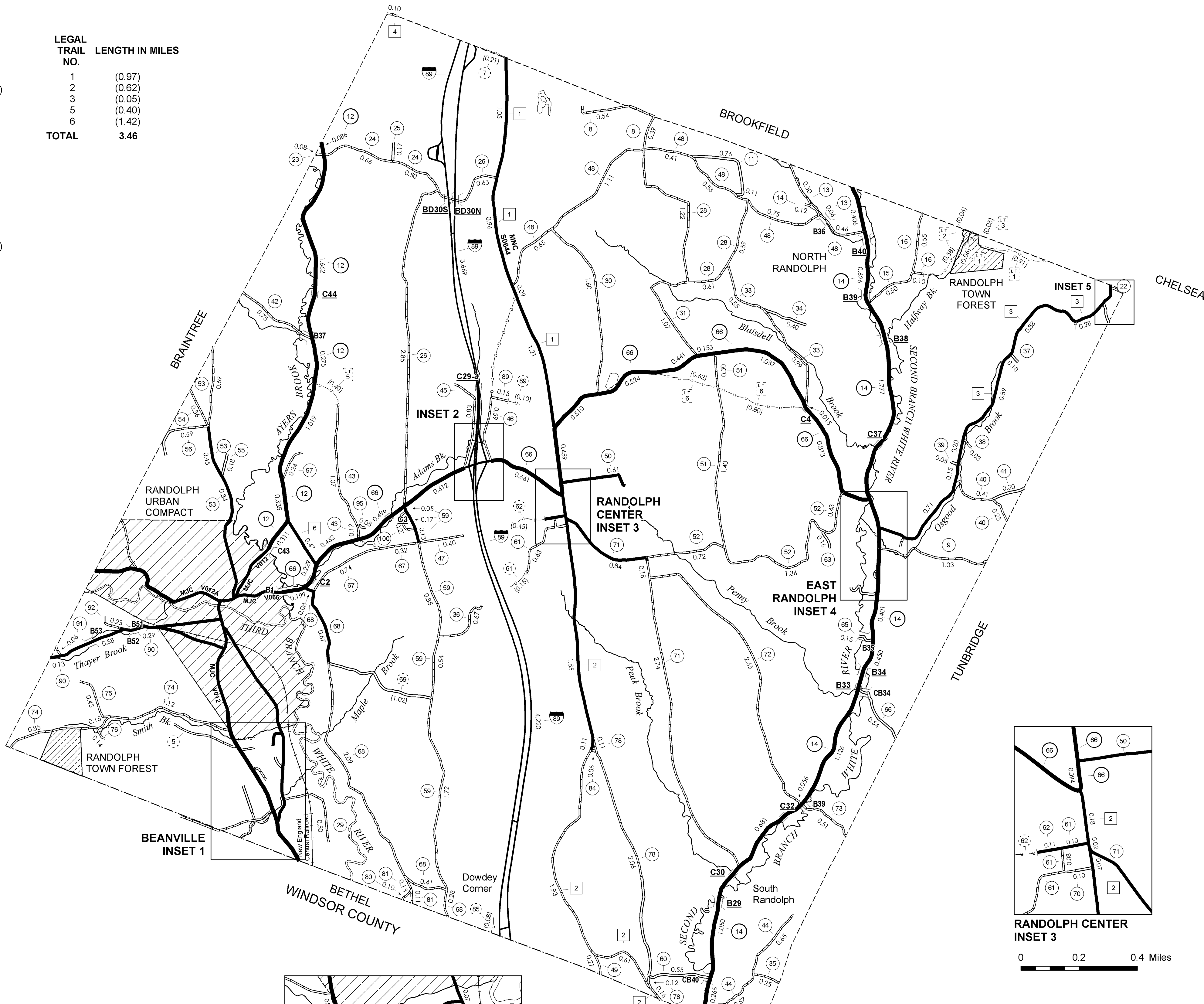
TOTAL, TRAVELED HIGHWAYS, FEB. 10, 2008: 119.698

(Excludes Class 4 and Legal Trail Mileage)

- | | | | | | | | | | | | | | | | | | | | | | | | | |
|------------|-------------------------------|------------------------------|--------|----------------------------------|-------------------------|--------------------------|-------------|--------------|----------------------|----------|-------------|------------------------|----------------|-----------------|---------------|------------------|------------------------|------------|-----------------|-------------------|------------------------------------|----------------------------|------------------------------------|-----------------------------------|
| INTERSTATE | STATE - HARD SURFACE OR PAVED | TOWN - HARD SURFACE OR PAVED | GRAVEL | SOIL OR GRADED AND DRAINED EARTH | UNIMPROVED OR PRIMITIVE | IMPASSABLE OR UNTRAVELED | LEGAL TRAIL | DISCONTINUED | HIGHWAY CLASS CHANGE | RAILROAD | PUBLIC LAND | POLITICAL SUBDIVISIONS | STATE BOUNDARY | COUNTY BOUNDARY | TOWN BOUNDARY | VILLAGE BOUNDARY | URBAN COMPACT BOUNDARY | OPEN WATER | STREAM OR BROOK | BRIDGE OR CULVERT | BRIDGE OR CULVERT GREATER THAN 20' | BRIDGE OR CULVERT 6' - 20' | STATE BRIDGE OR CULVERT IDENTIFIER | TOWN BRIDGE OR CULVERT IDENTIFIER |
|------------|-------------------------------|------------------------------|--------|----------------------------------|-------------------------|--------------------------|-------------|--------------|----------------------|----------|-------------|------------------------|----------------|-----------------|---------------|------------------|------------------------|------------|-----------------|-------------------|------------------------------------|----------------------------|------------------------------------|-----------------------------------|

DISCLAIMER:
The untraveled highways (laid-out town highways), discontinued highways, and legal trails shown hereon are those of which the Agency of Transportation has record; others may exist.
Highway and bridge data by the Agency of Transportation, Policy & Planning Division. All other data from the Vermont Center for Geographic Information.

FEDERAL CLASSIFICATION IDENTIFIER
FAU URBAN ARTERIAL OR COLLECTOR
MA MINOR ARTERIAL
MJC MAJOR COLLECTOR
MNC MINOR COLLECTOR
PA PRINCIPAL ARTERIAL

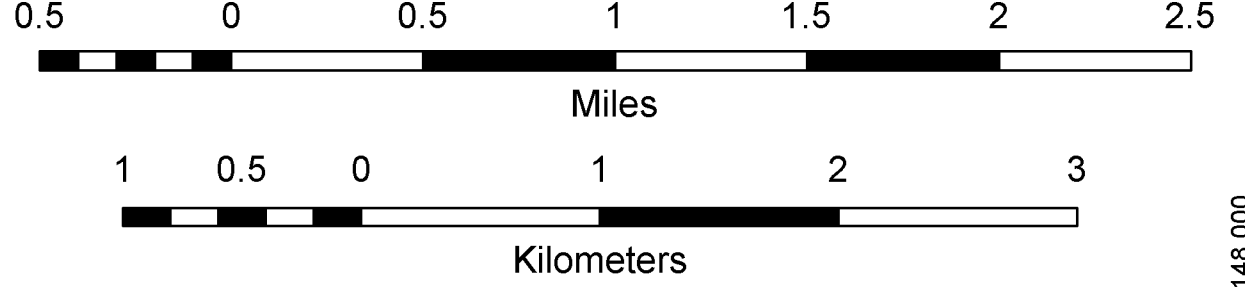


VERMONT
GENERAL HIGHWAY MAP
Town of Randolph
ORANGE COUNTY
Transportation District #4

Prepared by the
Vermont Agency of Transportation
Policy & Planning Division
in cooperation with
U.S. Department of Transportation
Federal Highway Administration

Mileage as of: February 10, 2008
Map generated: September, 2008

SCALE: 1:31680



STRUCTURES - SURFACE WATER NOTE:
Town short structures (bridges or culverts from 6-feet to less than 20-feet) were not represented due to inconsistencies in the data.
The surface waters are from the Vermont Hydrological Dataset (VHD). Only the named streams are shown.

Vermont State Plane Coordinate System
North American Datum of 1983
SPCS_Zone_Identifier: 4400
Geodetic Reference System 80
4,000-meter grid, Easting - Northing