

TOWN HWY. NO.	LENGTH IN MILES CLASS 3	LENGTH IN MILES CLASS 4	LEGAL TRAIL NO.	LENGTH IN MILES
6	5.000		1	(0.750)
7	1.950		2	(1.450)
8	1.600		3	(0.100)
9		(0.020)	4	(2.130)
10	0.100	(0.450)	5	(0.150)
11	2.700			
12	0.500	(1.000)		
13	0.150			
14	6.150			
15	1.550			
16	1.270	(0.050)		
18	2.730	(0.780)		
19	0.500			
20	1.500			
21	1.900			
22	0.600	(0.700)		
23	0.050			
24		(0.400)		
26	2.610			
27	0.300	(0.510)		
28	0.250			
29	0.360			
30	0.190			
31	1.500			
32		(0.090)		
33		(0.630)		
34	0.400			
35	0.500	(0.750)		
36	0.190	(1.160)		
37	0.200			
38	0.730	(0.540)		
40	0.460			
41		(0.150)		
42	0.080			
44		(0.200)		
45	0.120			
46	0.600			
47	0.090	(0.070)		
48	0.240			
TOTAL	37.960	7.500		

MILEAGE SUMMARY

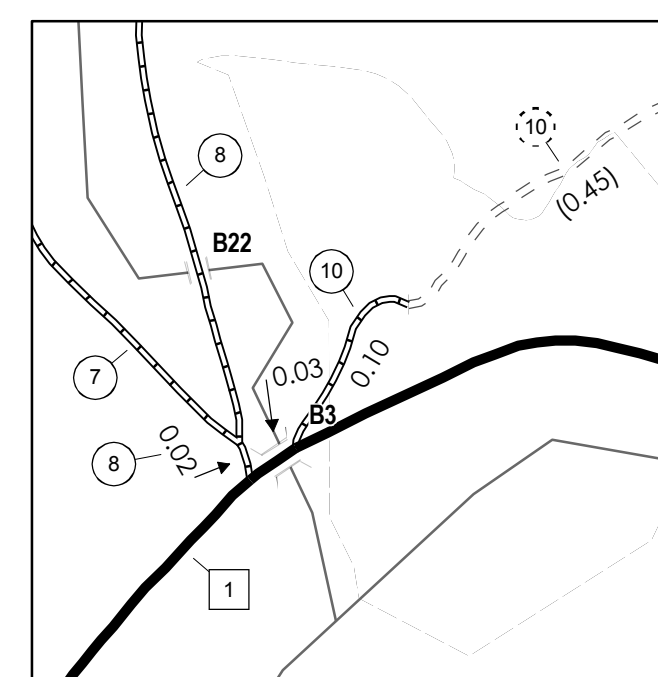
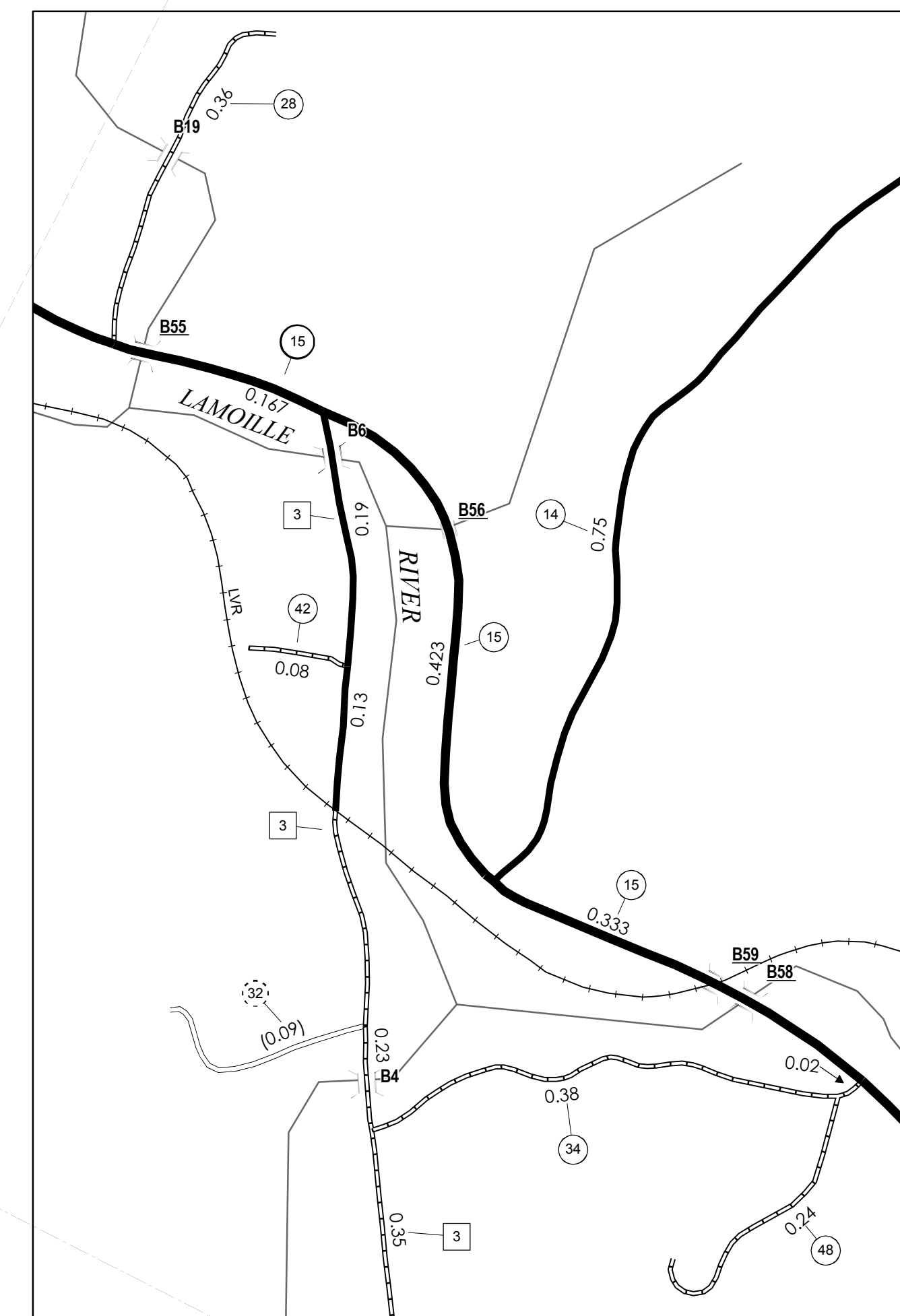
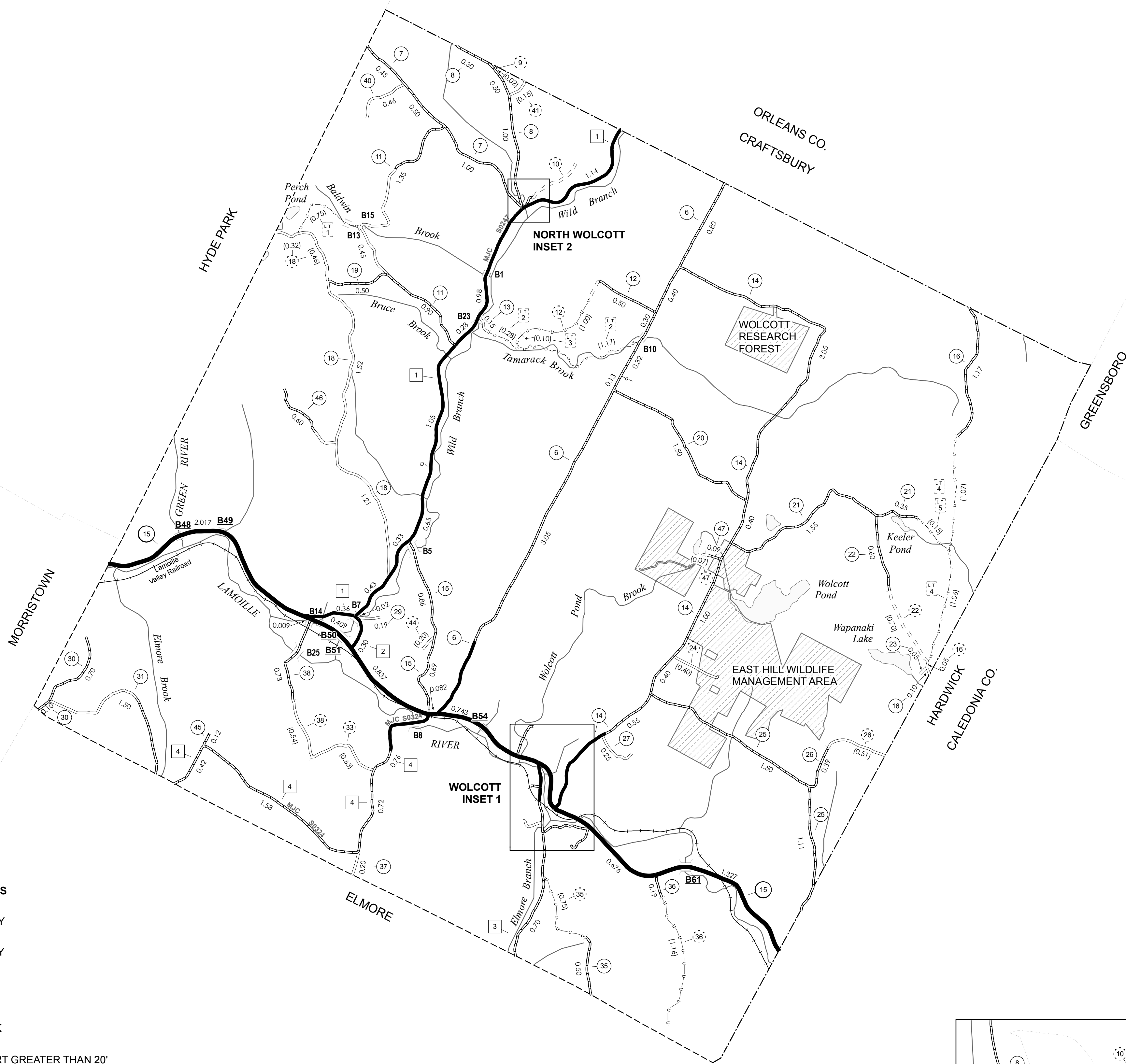
CLASS 2		
TH-1	5.250	
TH-2	0.320	
TH-3	1.600	
TH-4	3.480	
TOTAL CLASS 2	10.650	
CLASS 3		
TOTAL CLASS 3	37.960	
TOTAL TOWN	48.610	
STATE HIGHWAY		
VT-15	7.023	
TOTAL STATE HIGHWAY	7.023	
TOTAL STATE	7.023	

TOTAL, TRAVELED HIGHWAYS, FEB. 10, 2007: 55.633
(Excludes Class 4 and Legal Trail Mileage)

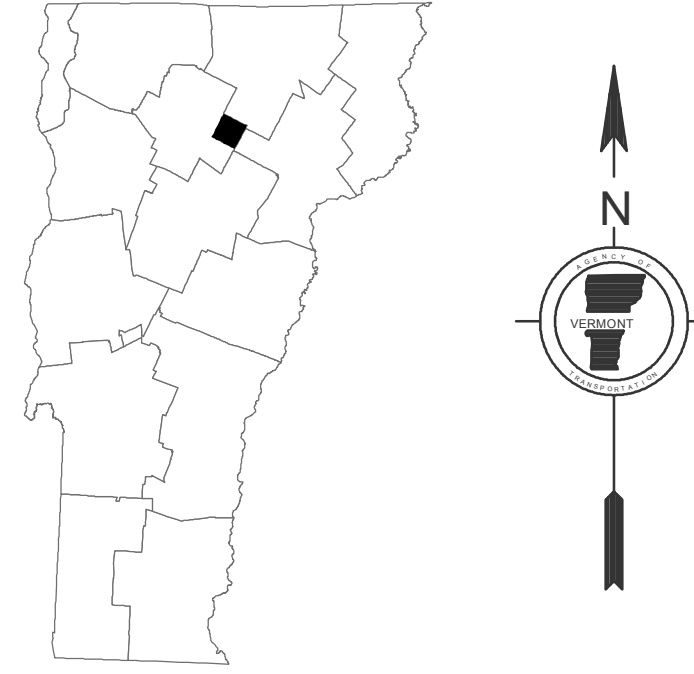
- HIGHWAYS**
 - INTERSTATE
 - U.S. ROUTE
 - STATE ROUTE
 - CLASS 1
 - CLASS 2
 - CLASS 3
 - CLASS 4
 - LEGAL TRAIL
 - INTERSTATE OR DIVIDED HIGHWAY
 - STATE - HARD SURFACE OR PAVED
 - TOWN - HARD SURFACE OR PAVED
 - GRAVEL
 - SOIL OR GRADED AND DRAINED EARTH
 - UNIMPROVED OR PRIMITIVE
 - IMPASSABLE OR UNTRAVELED
 - LEGAL TRAIL
 - DISCONTINUED
 - HIGHWAY CLASS CHANGE
 - RAILROAD
- PUBLIC LAND**
 - POLITICAL SUBDIVISIONS**
 - STATE BOUNDARY
 - COUNTY BOUNDARY
 - TOWN BOUNDARY
 - VILLAGE BOUNDARY
 - URBAN COMPACT
 - WATER BODIES**
 - OPEN WATER
 - SWAMP
 - STREAM OR BROOK
 - BRIDGE OR CULVERT**
 - BRIDGE OR CULVERT GREATER THAN 20'
 - BRIDGE OR CULVERT 6' - 20'
 - B34 STATE BRIDGE IDENTIFIER
 - B34 TOWN BRIDGE IDENTIFIER
 - FEDERAL CLASSIFICATION IDENTIFIER**
 - FAU URBAN ARTERIAL OR COLLECTOR
 - MA MINOR ARTERIAL
 - MJC MAJOR COLLECTOR
 - MNC MINOR COLLECTOR
 - PA PRINCIPAL ARTERIAL

DISCLAIMER:
The untraveled highways (laid-out town highways), discontinued highways, and legal trails shown herein are those of which the Agency of Transportation has record; others may exist.
Highway and bridge data by the Agency of Transportation, Policy & Planning Division. All other data from the Vermont Center for Geographic Information.

Vermont State Plane Coordinate System
North American Datum of 1983
SPCS_Zone_Identifier: 4400
Geodetic Reference System 80
4,000-meter grid, Easting - Northing



0 0.05 0.1 0.2 Miles



VERMONT
GENERAL HIGHWAY MAP
Town of Wolcott
LAMOILLE COUNTY

Transportation District #6

Prepared by the
Vermont Agency of Transportation
Policy & Planning Division
in cooperation with
U.S. Department of Transportation
Federal Highway Administration

Mileage as of: Feb. 10, 2007
Map generated: October, 2007

SCALE: 1:31680

