

472,000 476,000 480,000 484,000 488,000 492,000 496,000

TOWN HWY. NO.	LENGTH IN MILES CLASS 3	CLASS 4			
5	4.06		44	0.46	(0.78)
6	1.55	(1.90)	45	2.90	
7	0.10	(1.10)	46	1.21	(0.39)
8	0.10		47		(0.25)
9		(0.15)	48	0.90	(0.35)
10	1.53		49		(1.22)
11	2.10		50		(0.15)
12		(0.18)	51	1.85	
13	0.10		52	0.98	
14	0.10		53	0.07	
15	1.15		54	0.09	
16	0.94	(0.14)	56	0.13	
17		(0.30)	57	0.03	
18	1.55		58	0.15	
19		(0.10)	59	0.17	
20	0.40	(0.48)	60	0.22	(0.18)
21		(0.27)	61	0.15	
22	0.04	(0.56)	62	0.07	
23		(0.25)	63	0.13	
24	0.85		64	0.03	
25	0.45		65	0.05	
26	2.12		66	0.26	
27	0.60		67	0.06	
29	0.15		68	0.07	
30	1.02		69	0.07	
31	0.17	(0.93)	70	0.03	
32	0.87	(1.03)	71	0.17	
33	0.50		74	0.13	
34	0.45		75	0.04	
35	0.70	(1.10)	76	0.11	
36	0.40		77	0.03	
37	1.08		79	0.05	
38		(0.30)	80	0.07	
40	0.65	(0.78)	81	0.07	
41	0.03	(0.40)	82	0.53	
42	0.15		83	0.36	
43	0.47		84	0.12	
TOTAL			36.14	13.29	

MILEAGE SUMMARY

CLASS 2		
TH-1	5.270	
TH-2	0.500	
TH-3	0.400	
TH-4	2.430	
TH-5	1.380	
TH-6	1.550	
TH-7	1.600	
TOTAL CLASS 2	13.130	
CLASS 3		
TOTAL CLASS 3	36.140	
TOTAL TOWN	49.270	
STATE HIGHWAY		
VT-15	6.843	
VT-100C	4.508	
TOTAL STATE HIGHWAY	11.351	
TOTAL STATE	11.351	

TOTAL, TRAVELED HIGHWAYS, FEB. 10, 2008: 60.621
(Excludes Class 4 and Legal Trail Mileage)

HIGHWAYS

- INTERSTATE
- U.S. ROUTE
- STATE ROUTE
- CLASS 1
- CLASS 2
- CLASS 3
- CLASS 4
- LEGAL TRAIL
- INTERSTATE OR DIVIDED HIGHWAY
- STATE - HARD SURFACE OR PAVED
- TOWN - HARD SURFACE OR PAVED
- GRAVEL
- SOIL OR GRADED AND DRAINED EARTH
- UNIMPROVED OR PRIMITIVE
- IMPASSABLE OR UNTRAVELED
- LEGAL TRAIL
- DISCONTINUED
- RAILROAD
- HIGHWAY CLASS CHANGE
- INACTIVE RAILROAD

PUBLIC LAND

POLITICAL SUBDIVISIONS

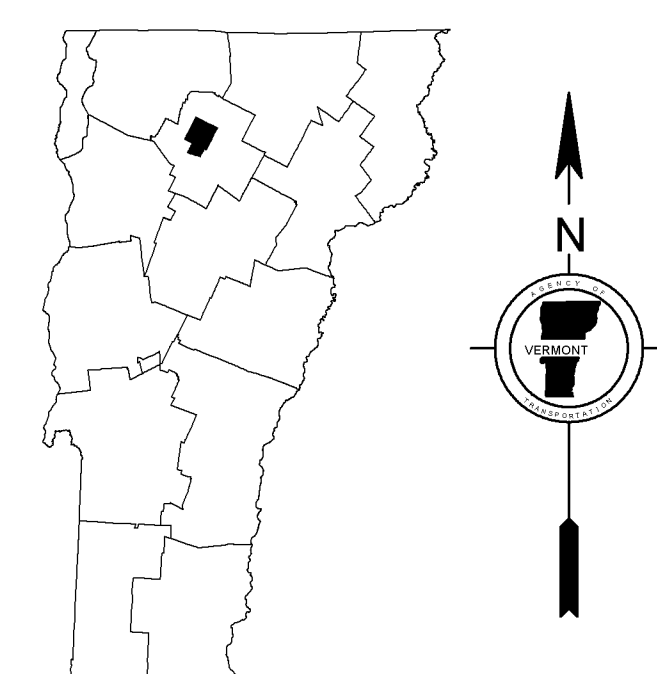
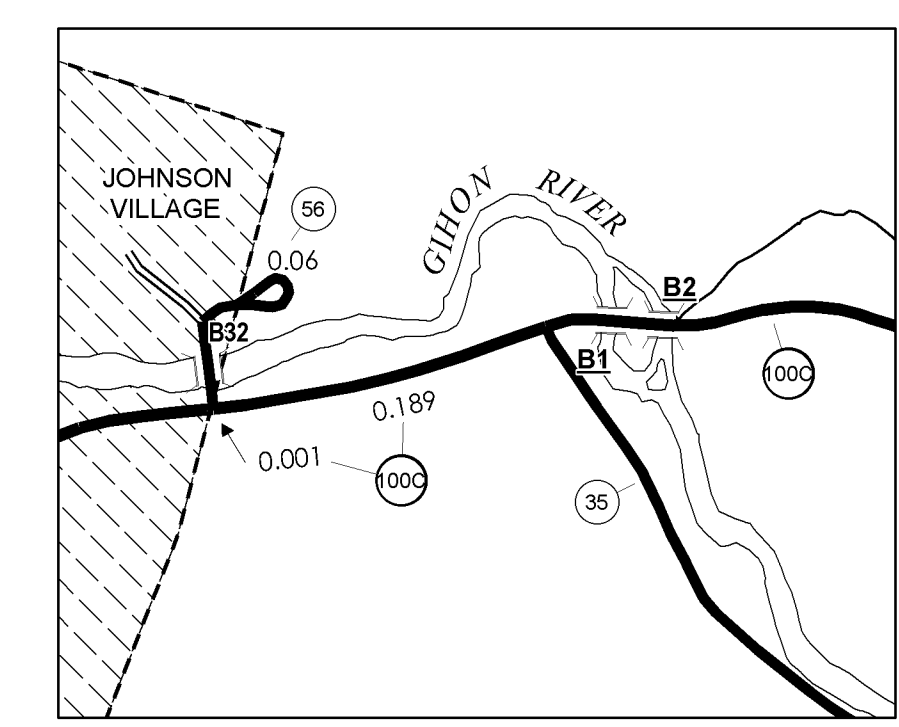
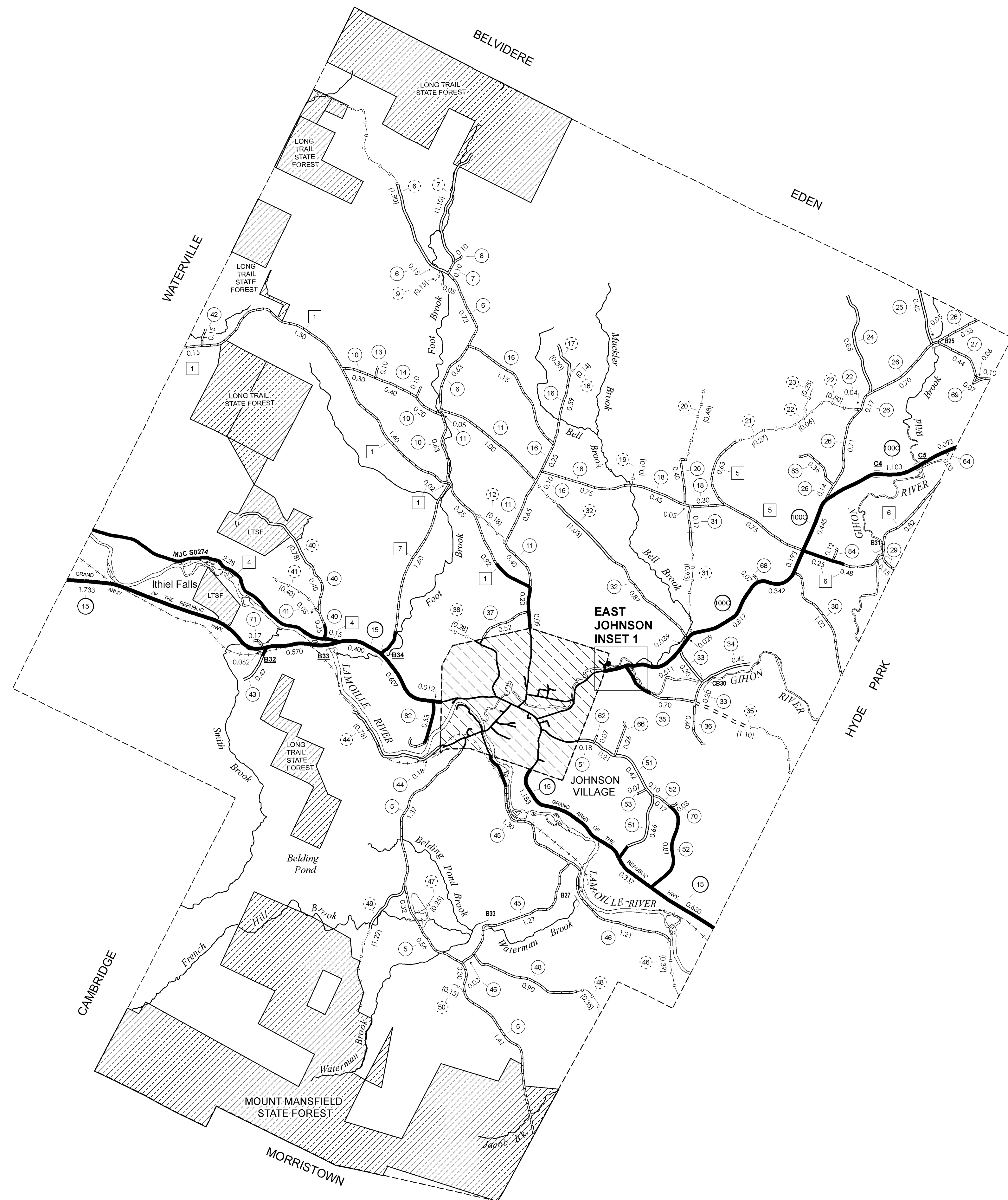
- STATE BOUNDARY
- COUNTY BOUNDARY
- TOWN BOUNDARY
- VILLAGE BOUNDARY
- URBAN COMPACT BOUNDARY
- OPEN WATER
- STREAM OR BROOK
- BRIDGE OR CULVERT
- BRIDGE OR CULVERT GREATER THAN 20'
- BRIDGE OR CULVERT 6' - 20'

B34 / C34 STATE BRIDGE OR CULVERT IDENTIFIER
B34 / C34 TOWN BRIDGE OR CULVERT IDENTIFIER

FEDERAL CLASSIFICATION IDENTIFIER
FAU URBAN ARTERIAL OR COLLECTOR
MA MINOR ARTERIAL
MJC MAJOR COLLECTOR
MNC MINOR COLLECTOR
PA PRINCIPAL ARTERIAL

DISCLAIMER:
The untraveled highways (laid-out town highways), discontinued highways, and legal trails shown hereon are those of which the Agency of Transportation has record; others may exist.
Highway and bridge data by the Agency of Transportation, Policy & Planning Division. All other data from the Vermont Center for Geographic Information.

Vermont State Plane Coordinate System
North American Datum of 1983
SPCS Zone Identifier: 4400
Geodetic Reference System 80
4,000-meter grid, Easting - Northing



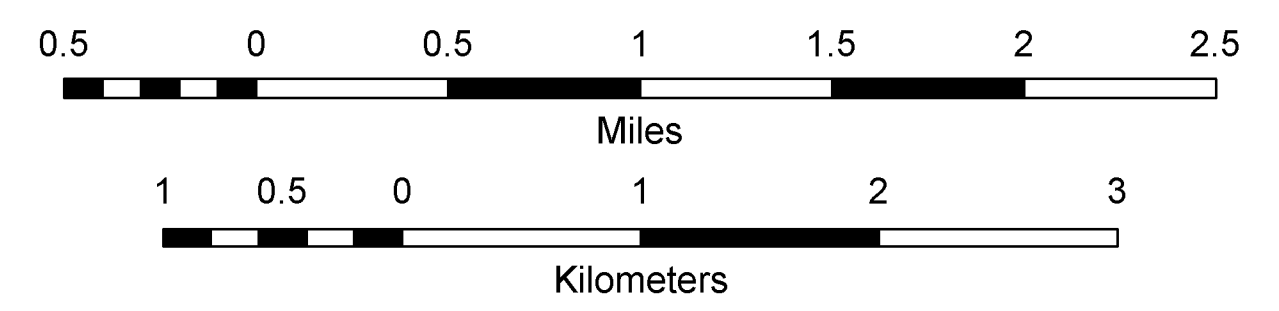
VERMONT
GENERAL HIGHWAY MAP
Town of Johnson
LAMOILLE COUNTY

Transportation District #8

Prepared by the
Vermont Agency of Transportation
Policy & Planning Division
in cooperation with
U.S. Department of Transportation
Federal Highway Administration

Mileage as of: Feb. 10, 2008
Map generated: September, 2008

SCALE: 1:31680



STRUCTURES - SURFACE WATER NOTE:
Town short structures (bridges or culverts from 6-feet to less than 20-feet) were not represented due to inconsistencies in the data.
The surface waters are from the Vermont Hydrological Dataset (VHD). Only the named streams are shown.

