

TOWN HWY. NO.	LENGTH IN MILES CLASS 3	LENGTH IN MILES CLASS 4
3	0.360	(1.440)
4		(0.200)
5	0.720	
6		(0.200)
7	1.750	
8	0.350	
9	2.650	
10	0.490	
11		(0.170)
13	2.480	
14	0.450	
15	0.850	
16	2.590	
17	1.900	
18	0.100	
19	0.110	
20		(0.160)
21	2.140	(2.010)
22	0.190	
23	0.160	
24		(2.550)
25	0.100	
26	0.750	
27	0.350	
28		(0.150)
29	0.070	
30		(0.300)
31	0.500	
32	0.450	
33	0.030	(0.020)
34		(0.200)
35	1.400	(1.650)
36		(2.400)
37		(0.130)
38	0.120	
39		(0.750)
40	0.060	
41	0.070	
42	0.190	
43	0.060	
44	0.130	
TOTAL	21.570	12.330

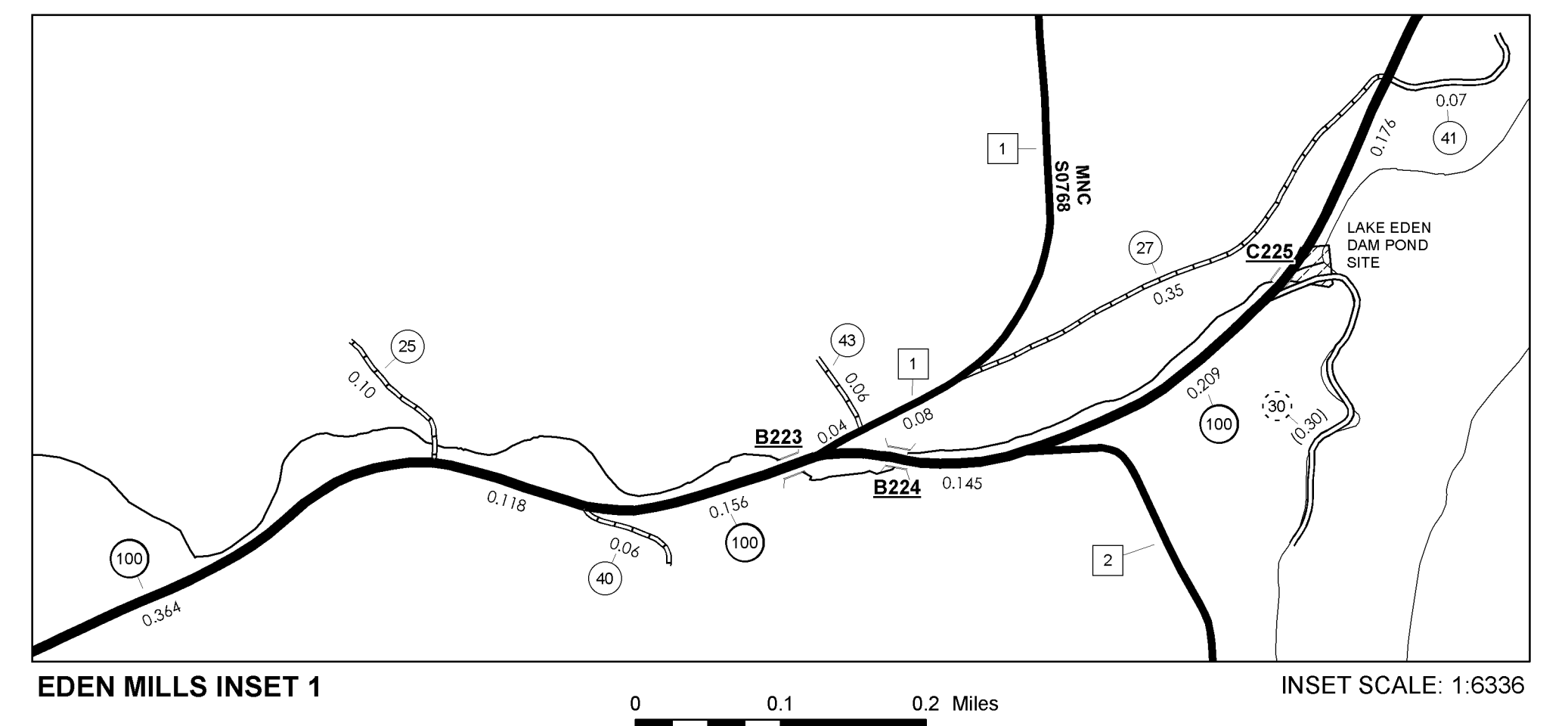
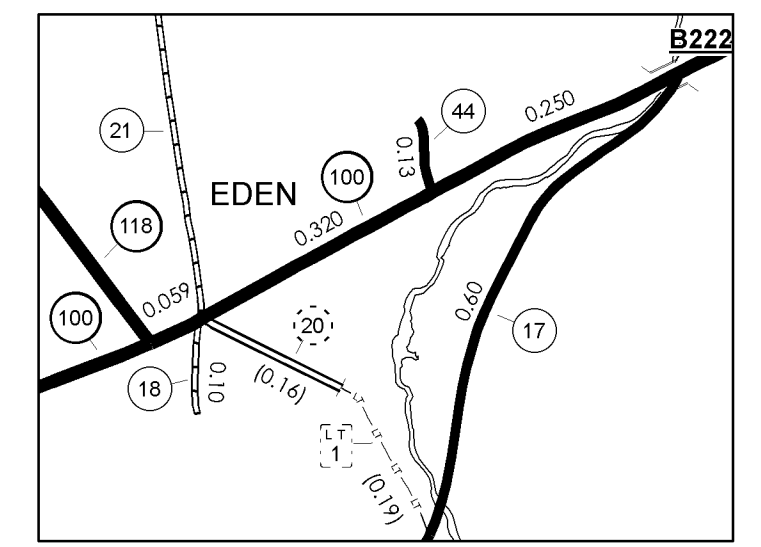
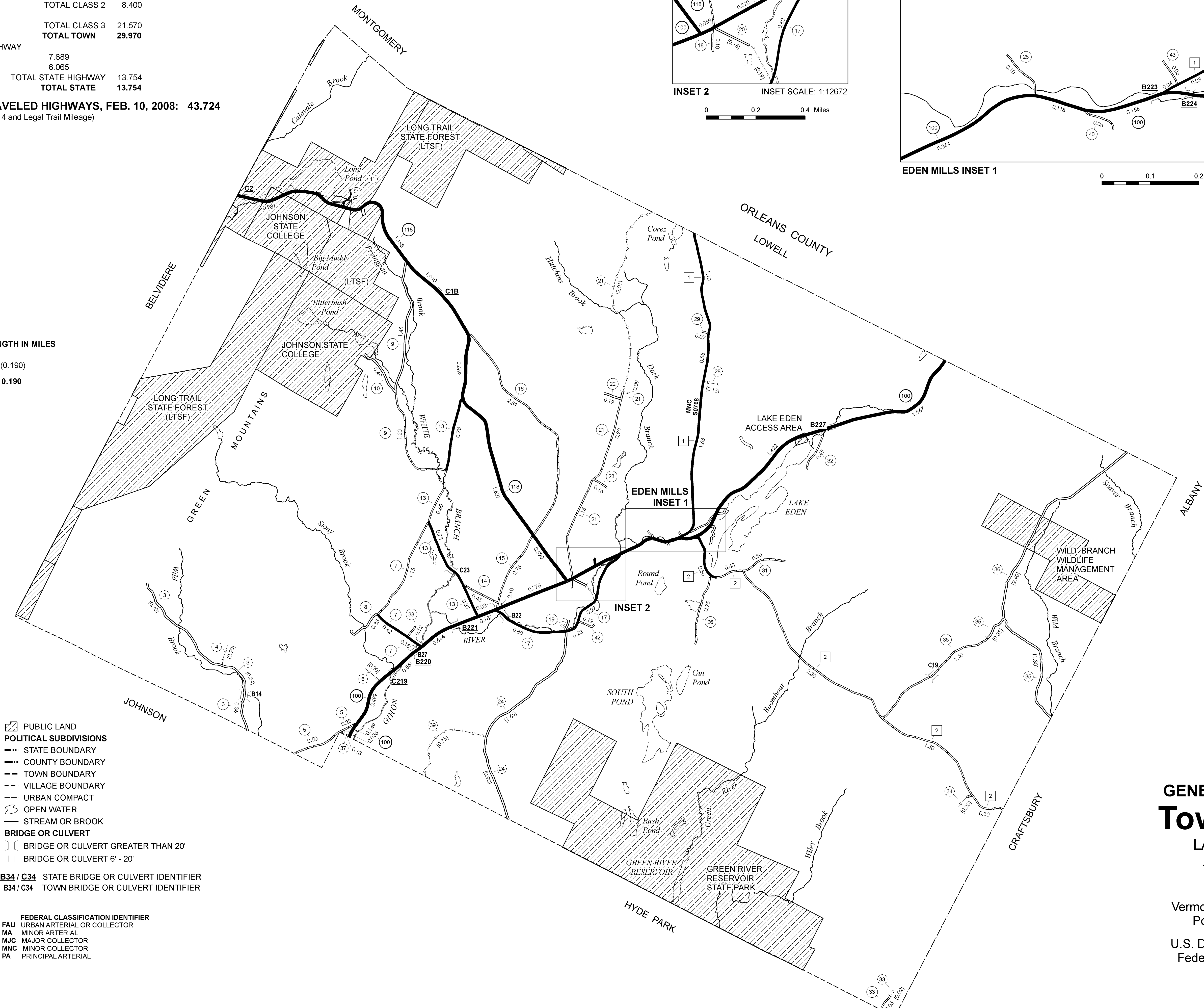
MILEAGE SUMMARY

CLASS 2		
TH-1	3.400	
TH-2	5.000	
TOTAL CLASS 2	8.400	
CLASS 3		
TOTAL CLASS 3	21.570	
TOTAL TOWN	29.970	
STATE HIGHWAY		
VT-100	7.689	
VT-118	6.065	
TOTAL STATE HIGHWAY	13.754	
TOTAL STATE	13.754	

TOTAL, TRAVELED HIGHWAYS, FEB. 10, 2008: 43.724
(Excludes Class 4 and Legal Trail Mileage)

LEGAL TRAIL LENGTH IN MILES

TRAIL NO.	LENGTH IN MILES
1	(0.190)
TOTAL	0.190



- HIGHWAYS**
- INTERSTATE
 - U.S. ROUTE
 - STATE ROUTE
 - CLASS 1
 - CLASS 2
 - CLASS 3
 - CLASS 4
 - LEGAL TRAIL
 - INTERSTATE OR DIVIDED HIGHWAY
 - STATE - HARD SURFACE OR PAVED
 - TOWN - HARD SURFACE OR PAVED
 - GRAVEL
 - SOIL OR GRADED AND DRAINED EARTH
 - UNIMPROVED OR PRIMITIVE
 - IMPASSABLE OR UNTRAVELED
 - LEGAL TRAIL
 - DISCONTINUED
 - HIGHWAY CLASS CHANGE
 - RAILROAD

- PUBLIC LAND**
- STATE BOUNDARY
 - COUNTY BOUNDARY
 - TOWN BOUNDARY
 - VILLAGE BOUNDARY
 - URBAN COMPACT
 - OPEN WATER
 - STREAM OR BROOK
 - BRIDGE OR CULVERT
 - BRIDGE OR CULVERT GREATER THAN 20'
 - BRIDGE OR CULVERT 6' - 20'
 - STATE BRIDGE OR CULVERT IDENTIFIER
 - TOWN BRIDGE OR CULVERT IDENTIFIER
- FEDERAL CLASSIFICATION IDENTIFIER**
- FAU URBAN ARTERIAL OR COLLECTOR
 - MA MINOR ARTERIAL
 - MJC MAJOR COLLECTOR
 - MNC MINOR COLLECTOR
 - PA PRINCIPAL ARTERIAL

DISCLAIMER:
The untraveled highways (laid-out town highways), discontinued highways, and legal trails shown hereon are those of which the Agency of Transportation has record; others may exist.
Highway and bridge data by the Agency of Transportation, Policy & Planning Division. All other data from the Vermont Center for Geographic Information.

STRUCTURES - SURFACE WATER NOTE:
Town short structures (bridges or culverts from 6-feet to less than 20-feet) were not represented due to inconsistencies in the data.
The surface waters are from the Vermont Hydrological Dataset (VHD). Only the named streams are shown.

Vermont State Plane Coordinate System
North American Datum of 1983
SPCS_Zone_Identifier: 4400
Geodetic Reference System 80
4,000-meter grid, Easting - Northing

VERMONT
GENERAL HIGHWAY MAP
Town of Eden
LAMOILLE COUNTY

Transportation District #8

Prepared by the
Vermont Agency of Transportation
Policy & Planning Division
in cooperation with
U.S. Department of Transportation
Federal Highway Administration

Mileage as of: Feb. 10, 2008
Map generated: September, 2008

