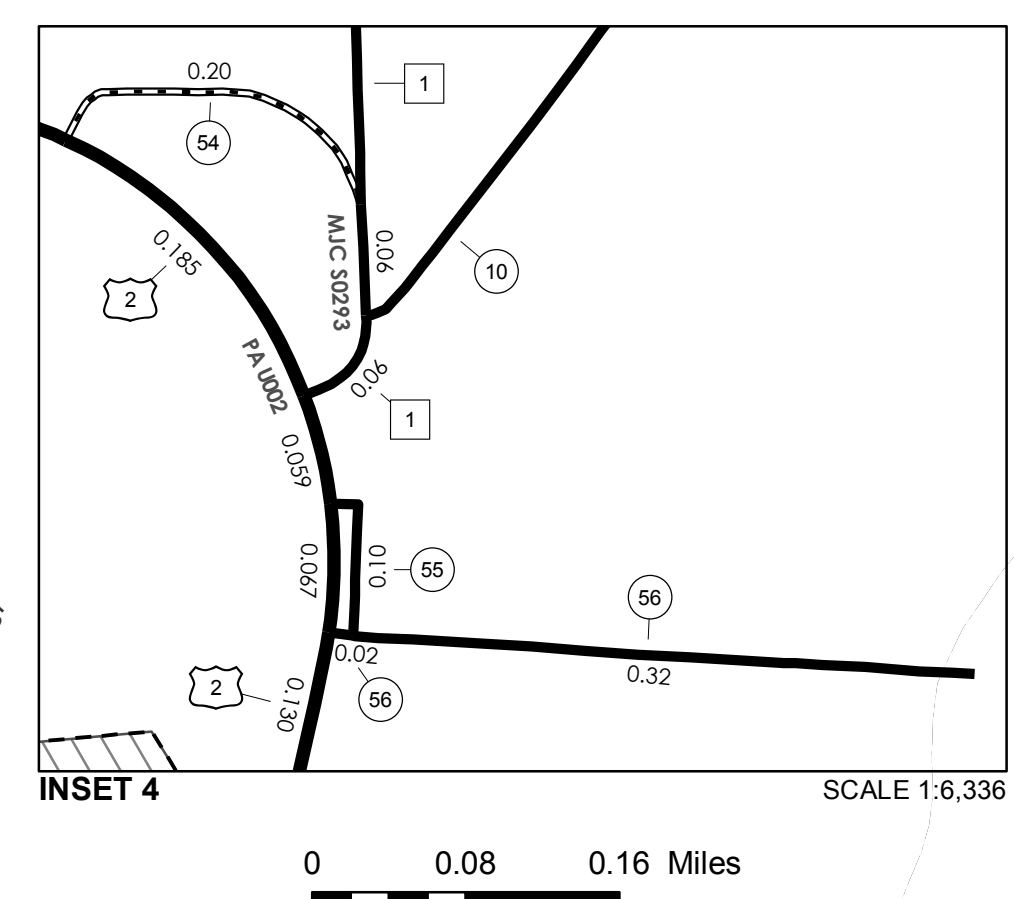
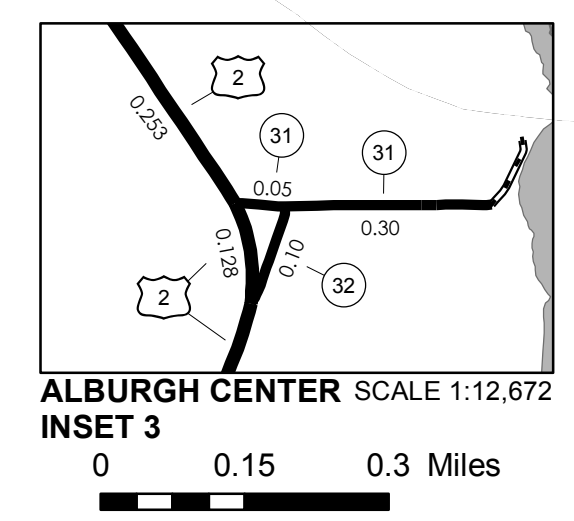
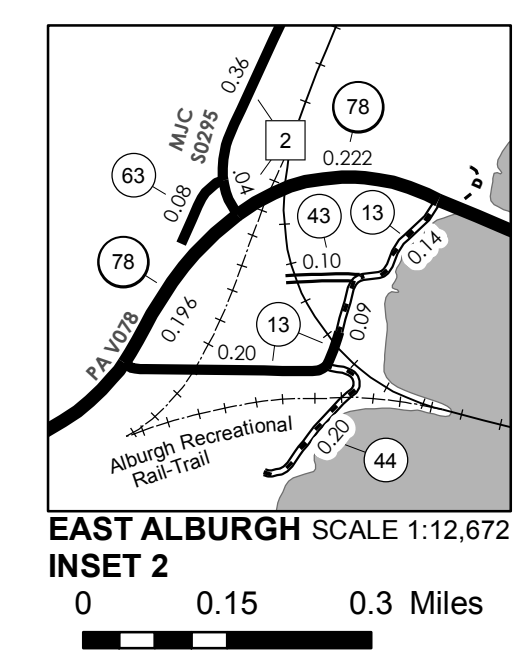
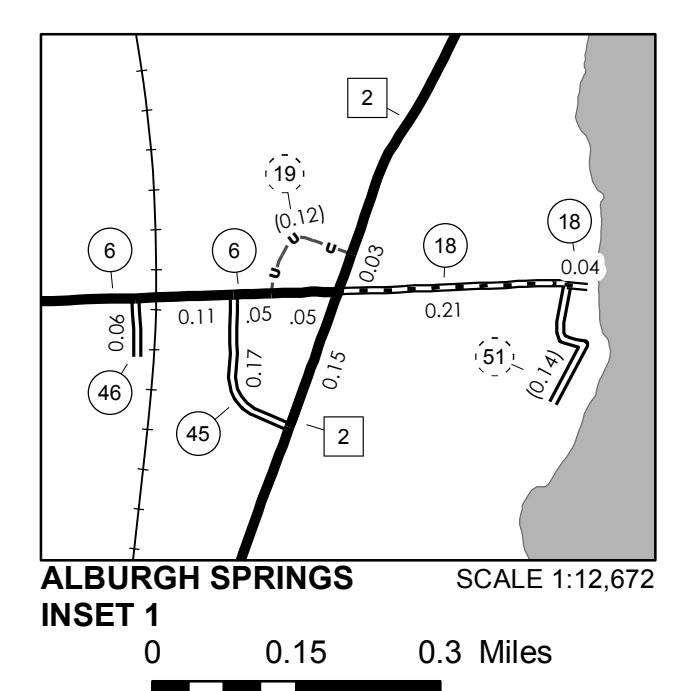


TOWN HWY. No.	LENGTH IN MILES CLASS 3	CLASS 4
6	2.38	
7	1.07	
8	1.70	
9	0.39	
10	1.80	
11	3.55	
12	0.20	
13	0.43	
14		(0.55)
15	1.26	
16	1.19	
17	1.27	
18	0.25	
19		(0.12)
20	1.50	
21	0.15	
22	0.20	
23	0.15	
24	0.42	
25	0.13	
26	0.14	(0.16)
27	0.38	
28	0.67	
29		(0.20)
31	0.35	
32	0.10	
33	2.18	
34		(0.45)
35	1.47	
36	1.64	
37		(0.10)
38	2.10	
39	0.20	
43	0.10	
44	0.20	
45	0.17	
46	0.06	
47	0.65	
48	0.06	
51		(0.14)
52	0.08	
53	0.35	
54	0.20	
55	0.10	
56	0.34	
57	0.11	
58	0.70	
59	0.43	
60	0.29	
61	0.13	
62	0.14	
63	0.08	
TOTAL	31.46	1.72

MILEAGE SUMMARY

CLASS	LENGTH	TOTAL
CLASS 2		
TH-1	1.590	
TH-2	2.840	
TH-3	4.450	
TH-4	1.830	
TOTAL CLASS 2		10.710
CLASS 3		
TOTAL CLASS 3		31.46
TOTAL TOWN		42.170
STATE HIGHWAY		
VT-78	3.333	
VT-129	2.739	
TOTAL STATE HIGHWAY		6.072
US HIGHWAY		
US-2	11.732	
TOTAL US HIGHWAY		11.732
TOTAL STATE		17.804

TOTAL, TRAVELED HIGHWAYS, FEB. 10, 2014: 59.974
(Excludes Class 4, Legal Trail, and Unidentified Corridor Mileage)



VERMONT
GENERAL HIGHWAY MAP
Town of Alburgh
GRAND ISLE COUNTY
 Transportation District #8
 Prepared by the
 Vermont Agency of Transportation
 Division of Policy, Planning and Intermodal Development
 in cooperation with
 U.S. Department of Transportation
 Federal Highway Administration
 Mileage as of February 10, 2014
 Map prepared October 06, 2014
SCALE 1:31,680

DISCLAIMER:
 The untraveled highways (laid-out town highways), discontinued highways, and legal trails hereon are those of which the Agency of Transportation has record; others may exist.
 Highway and bridge data by the Agency of Transportation. Town short structures are drawn from the Vermont Online Bridge & Culvert Inventory Tool (VOBCIT) database. All other data from the Vermont Center for Geographic Information. Only named streams are shown.

Vermont State Plane Coordinate System
 North American Datum of 1983
 SPCS_Zone_Identifier: 4400
 Geodetic Reference System 80
 4,000-meter grid, Easting - Northing