

TOWN HWY. NO.	LENGTH IN MILES CLASS 3	LENGTH IN MILES CLASS 4
6	2.38	
7	1.07	
8	1.70	
9	0.39	
10	1.80	
11	3.55	
12	0.20	
13	0.43	
14		(0.55)
15	1.26	
16	1.19	
17	1.27	
18	0.25	
19		(0.12)
20	1.50	
21	0.15	
22	0.20	
23	0.15	
24	0.42	
25	0.13	
26	0.14	(0.16)
27	0.38	
28	0.67	
29		(0.20)
31	0.35	
32	0.10	
33	2.18	
34		(0.45)
35	1.47	
36	1.64	
37		(0.10)
38	2.10	
39	0.20	
43	0.10	
44	0.20	
45	0.17	
46	0.06	
47	0.65	
48	0.06	
51		(0.14)
52	0.08	
53	0.35	
54	0.20	
55	0.10	
56	0.34	
57	0.11	
58	0.70	
59	0.43	
60	0.29	
61	0.13	
62	0.14	
63	0.08	
TOTAL	31.46	1.72

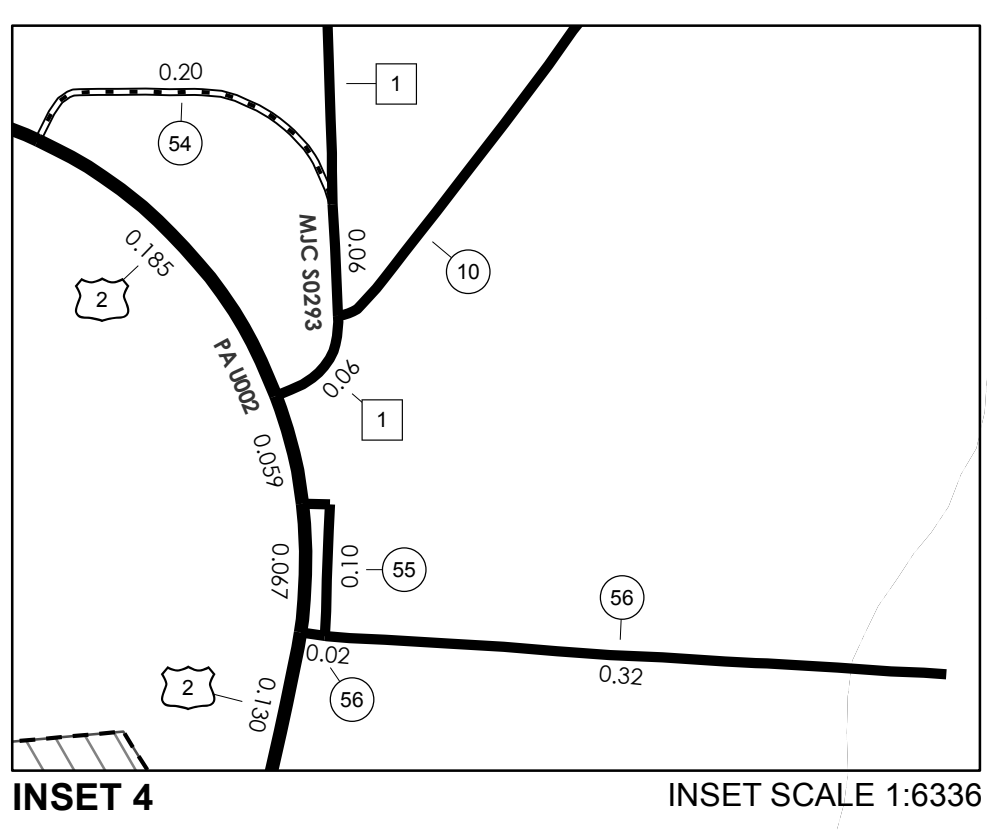
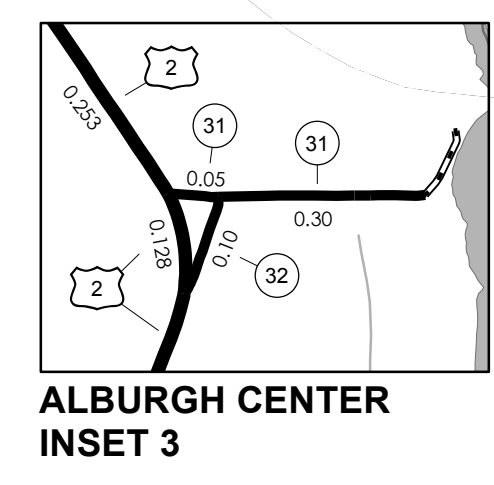
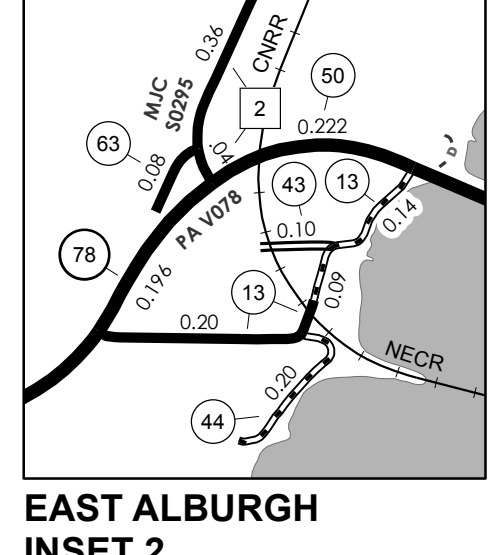
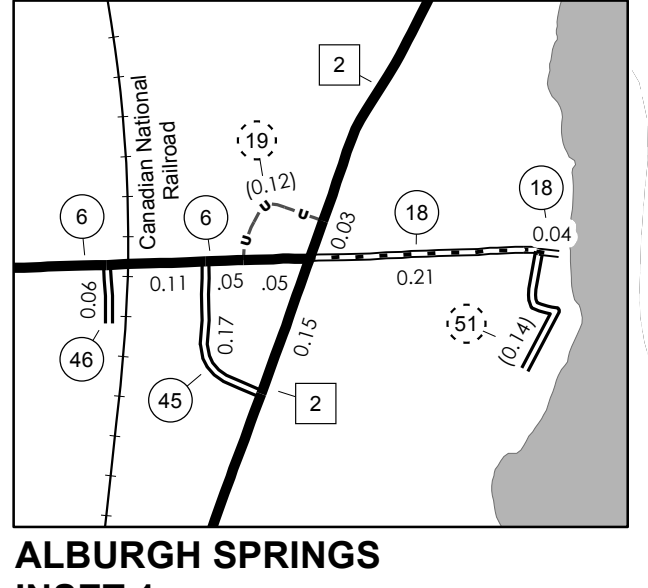
MILEAGE SUMMARY	
CLASS 2	
TH-1	1.590
TH-2	2.840
TH-3	4.450
TH-4	1.830
TOTAL CLASS 2	10.710
CLASS 3	
TOTAL CLASS 3	31.460
TOTAL TOWN	42.170
STATE HIGHWAY	
VT-78	3.333
VT-129	2.739
TOTAL STATE HIGHWAY	6.072
US HIGHWAY	
US-2	11.732
TOTAL US HIGHWAY	11.732
TOTAL STATE	17.804

TOTAL, TRAVELED HIGHWAYS, FEB. 10, 2011: 59.974
 (Excludes Class 4, Legal Trail, and Unidentified Corridor Mileage)

- HIGHWAYS**
- INTERSTATE
- U.S. ROUTE
- STATE ROUTE
- CLASS 1
- CLASS 2
- CLASS 3
- CLASS 4
- LEGAL TRAIL
- INTERSTATE OR DIVIDED HIGHWAY
- STATE - HARD SURFACE OR PAVED
- TOWN - HARD SURFACE OR PAVED
- GRAVEL
- SOIL OR GRADED AND DRAINED EARTH
- UNIMPROVED OR PRIMITIVE
- IMPASSABLE OR UNTRAVELED
- LEGAL TRAIL
- DISCONTINUED
- HIGHWAY CLASS CHANGE
- RAILROAD
- INACTIVE RAILROAD
- PUBLIC LAND
- POLITICAL SUBDIVISIONS**
- STATE BOUNDARY
- COUNTY BOUNDARY
- TOWN BOUNDARY
- VILLAGE BOUNDARY
- URBAN COMPACT BOUNDARY
- WATER BODY
- STREAM OR BROOK
- BRIDGE OR CULVERT**
- BRIDGE OR CULVERT GREATER THAN 20'
- BRIDGE OR CULVERT 6' - 20'
- TOWN SHORT STRUCTURE
- B34 / C34 STATE BRIDGE OR CULVERT IDENTIFIER**
- B34 / C34 TOWN BRIDGE OR CULVERT IDENTIFIER**
- FEDERAL CLASSIFICATION IDENTIFIER**
- FAU URBAN ARTERIAL OR COLLECTOR
- MA MINOR ARTERIAL
- MJC MAJOR COLLECTOR
- MNC MINOR COLLECTOR
- PA PRINCIPAL ARTERIAL

STRUCTURES - SURFACE WATER NOTE:
 STRUCTURES: Town short structures (bridges or culverts from 6-feet to less than 20-feet) are drawn from the Vermont Online Bridge & Culvert Inventory Tool (VOBCIT) database.
 NOTE: Town shorts are not consistently tagged within VOBCIT.
 SURFACE WATERS: The surface waters are from the Vermont Hydrological Dataset (VHD). Only the named streams are shown.

DISCLAIMER:
 The untraveled highways (laid-out town highways), discontinued highways, and legal trails shown hereon are those of which the Agency of Transportation has record; others may exist.
 Highway and bridge data by the Agency of Transportation. All other data from the Vermont Center for Geographic Information.



SCALE FOR INSETS 1:12672 (UNLESS OTHERWISE NOTED)



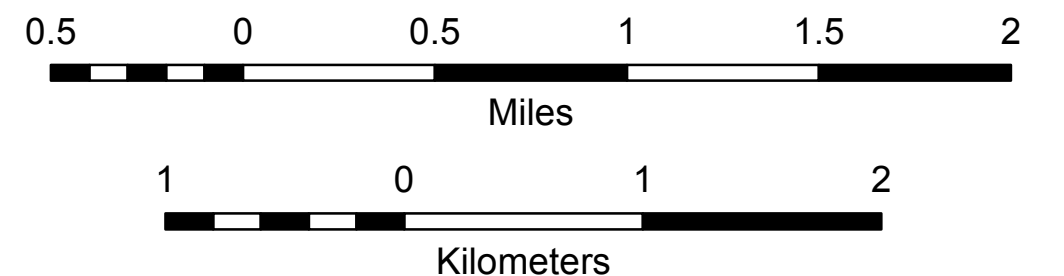
VERMONT GENERAL HIGHWAY MAP
Town of Alburgh

GRAND ISLE COUNTY
 Transportation District #8

Prepared by the
 Vermont Agency of Transportation
 Division of Policy, Planning & Intermodal Development
 in cooperation with
 U.S. Department of Transportation
 Federal Highway Administration

Mileage as of February 10, 2011
 Map prepared October 26, 2011

SCALE 1:31,680



Vermont State Plane Coordinate System
 North American Datum of 1983
 SPCS_Zone_Identifier: 4400
 Geodetic Reference System 80
 4,000-meter grid, Easting - Northing