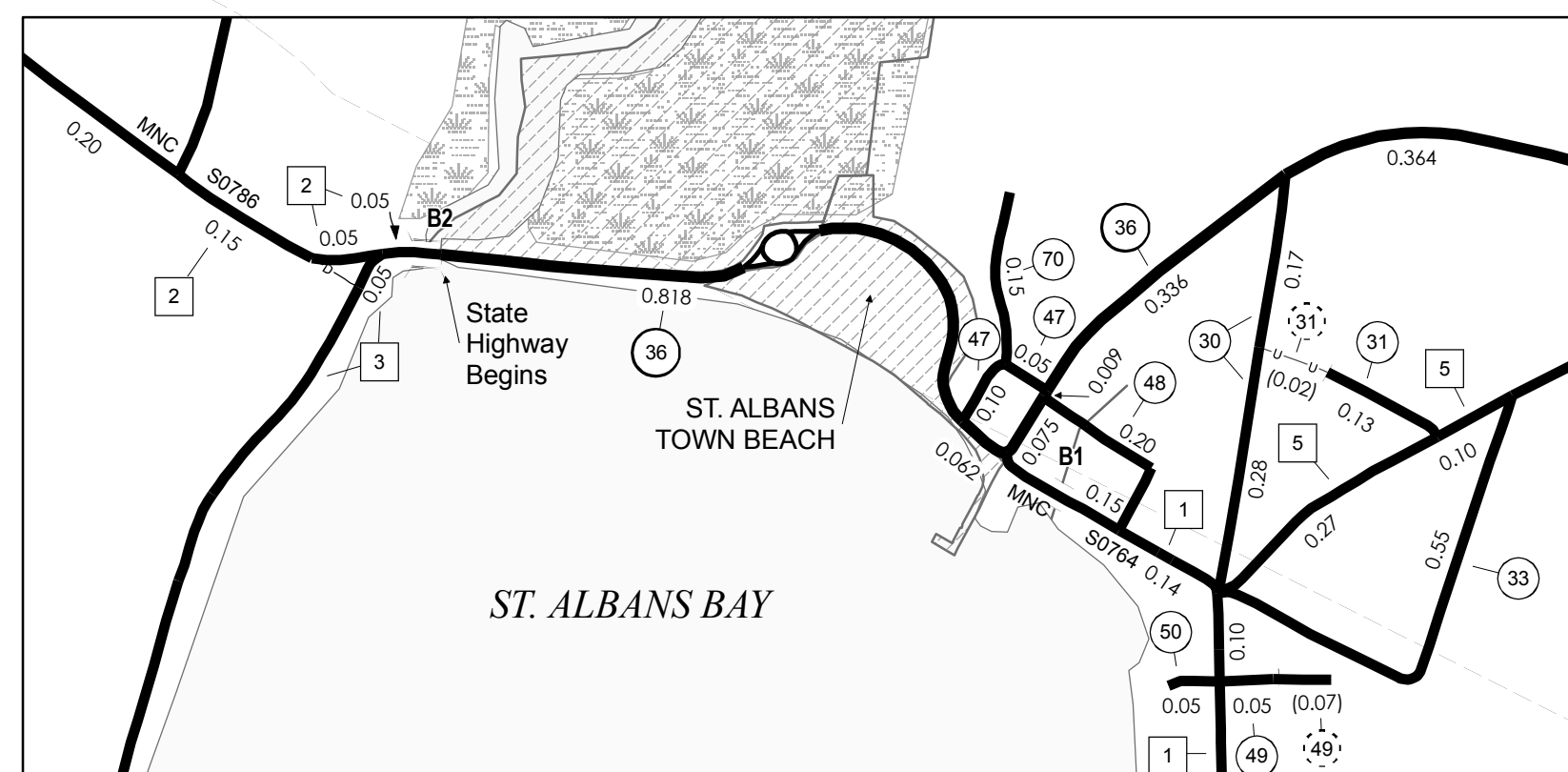
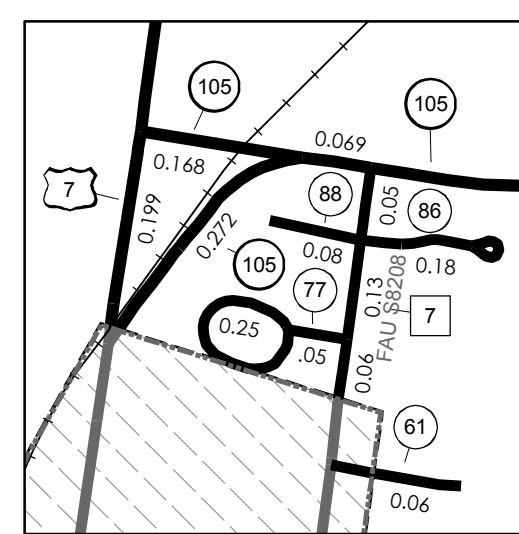


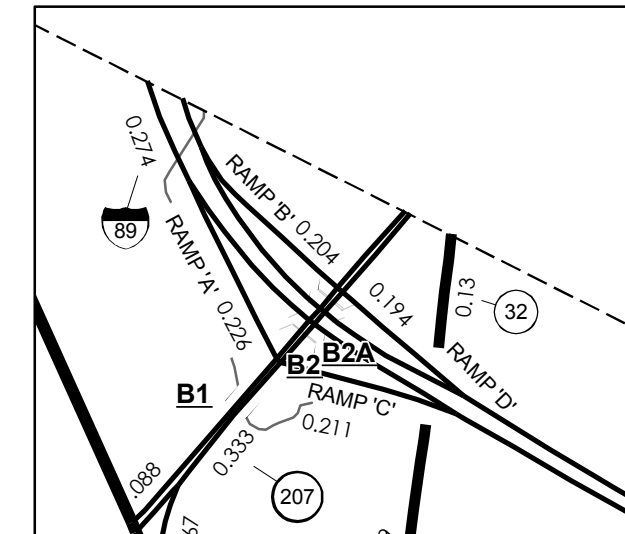
- HIGHWAYS**
- INTERSTATE
- U.S. ROUTE
- STATE ROUTE
- CLASS 1
- CLASS 2
- CLASS 3
- CLASS 4
- INTERSTATE OR DIVIDED HIGHWAY
- STATE - HARD SURFACE OR PAVED
- TOWN - HARD SURFACE OR PAVED
- GRAVEL
- SOIL OR GRADED AND DRAINED EARTH
- UNIMPROVED OR PRIMITIVE
- IMPASSABLE OR UNTRAVELED
- LEGAL TRAIL
- DISCONTINUED
- HIGHWAY CLASS CHANGE
- RAILROAD
- PUBLIC LAND**
- POLITICAL SUBDIVISIONS**
- STATE BOUNDARY
- COUNTY BOUNDARY
- TOWN BOUNDARY
- VILLAGE BOUNDARY
- URBAN COMPACT BOUNDARY
- STREAM OR BROOK
- BRIDGE OR CULVERT**
- BRIDGE OR CULVERT GREATER THAN 20'
- BRIDGE OR CULVERT 6' - 20'
- WATER BODIES**
- OPEN WATER
- SWAMP
- B34 STATE BRIDGE IDENTIFIER**
- B34 TOWN BRIDGE IDENTIFIER**
- FEDERAL CLASSIFICATION IDENTIFIER**
- FAU URBAN ARTERIAL OR COLLECTOR
- MA MINOR ARTERIAL
- MJC MAJOR COLLECTOR
- MNC MINOR COLLECTOR
- PA PRINCIPAL ARTERIAL



ST. ALBANS BAY INSET 1 SCALE 1:12000



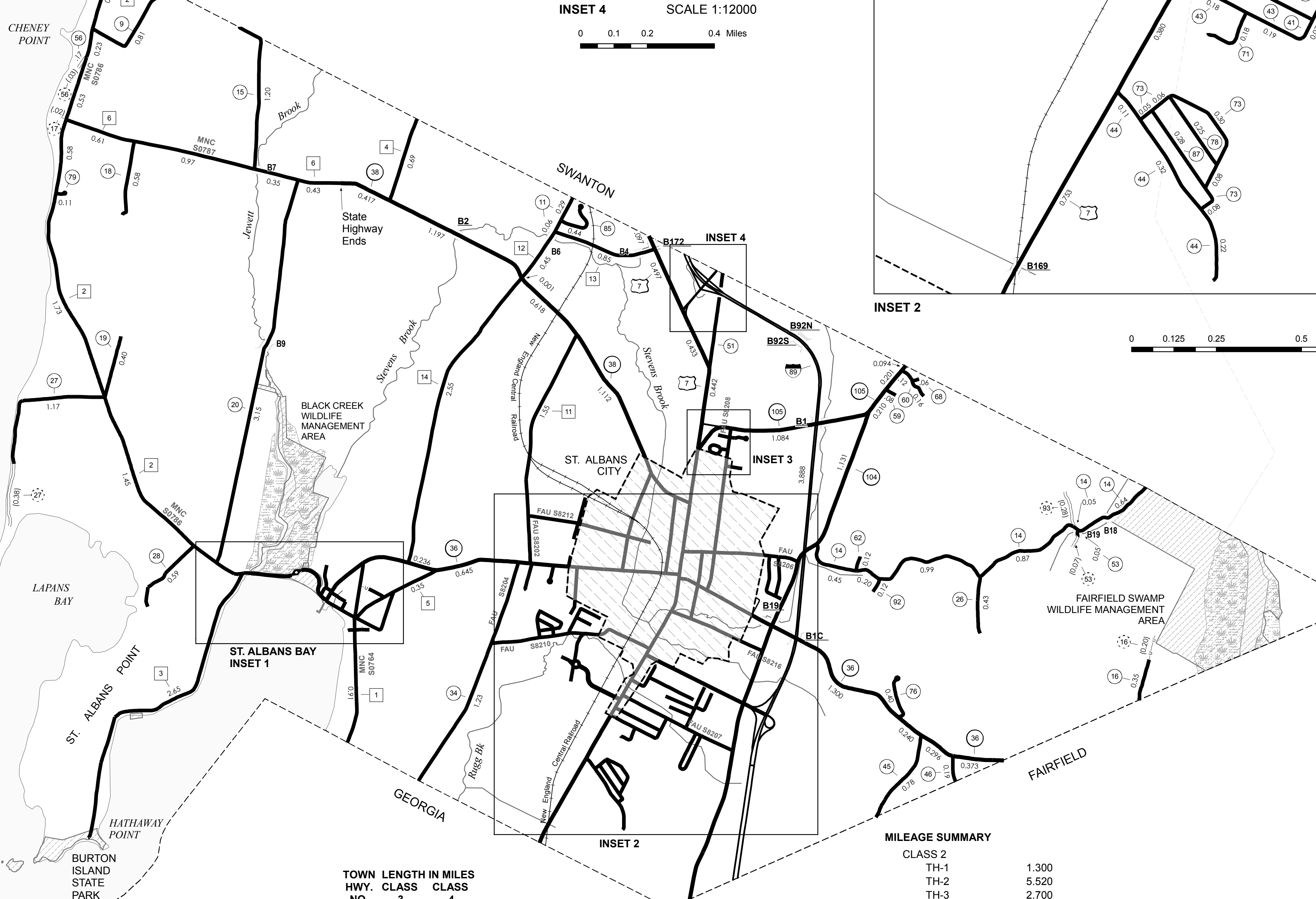
INSET 3 SCALE 1:12000



INSET 4 SCALE 1:12000



INSET 2 SCALE 1:12000



TOWN HWY. NO.	CLASS	LENGTH IN MILES
9	0.810	
11	0.350	
13	(0.200)	
14	3.200	
15	1.200	
16	0.350	
17	(0.020)	
18	0.580	
19	0.400	
20	3.150	
22	0.430	
23	0.180	
24	0.130	
26	0.430	
27	1.170	(0.380)
28	0.590	
30	0.450	
31	0.130	(0.020)
32	0.130	
33	0.550	
34	1.900	
35	0.220	
36	0.080	
37	0.880	
38	0.250	
40	0.370	
41	0.180	
42	0.350	
43	0.370	
44	0.650	
45	0.780	
46	0.190	
47	0.150	
48	0.200	
49	0.050	(0.070)
50	0.050	
51	0.590	
53	0.050	(0.070)
54	0.080	
56	0.170	(0.030)
57	0.240	
58	0.180	
59	0.080	
60	0.280	
61	0.060	
62	0.120	
65	1.040	
66	0.110	
67	0.040	
68	0.060	
69	0.200	
70	0.150	
71	0.180	
72	0.390	
73	0.570	
74	0.380	
75	0.130	
76	0.400	
77	0.300	
78	0.250	
79	0.110	
80	0.280	
81	0.180	
82	0.660	
83	0.060	
84	0.630	
85	0.440	
86	0.180	
87	0.280	
88	0.080	
89	0.220	
90	0.390	
91	0.200	
92	0.120	
93	(0.280)	
94	0.120	(0.280)
TOTAL	30.900	1.270

* This portion of town highway is Class 3, but is functionally Class 4

MILEAGE SUMMARY	
CLASS 2	
TH-1	1.300
TH-2	5.520
TH-3	2.700
TH-4	0.690
TH-5	0.720
TH-6	2.360
TH-7	0.240
TH-8	0.250
TH-9	0.130
TH-10	0.910
TH-11	1.900
TH-12	0.450
TH-13	0.850
TH-14	2.550
TOTAL CLASS 2	20.570
CLASS 3	
TOTAL CLASS 3	30.900
TOTAL TOWN	51.470
STATE HIGHWAY	
VT-36	5.323
VT-38	3.345
VT-104	4.110
VT-105	1.930
VT-207	0.421
ST. ALBANS STATE HIGHWAY	0.990
TOTAL STATE HIGHWAY	16.119
STATE HIGHWAY - Ramp	
VT-105	0.168
VT-207	0.167
TOTAL STATE HIGHWAY - Ramp	0.335
US HIGHWAY	
US-7	2.897
TOTAL US HIGHWAY	2.897
TOTAL STATE	19.351
INTERSTATE	
I-89	5.584
TOTAL INTERSTATE	5.584
INTERSTATE - Ramp	
I-89	2.139
TOTAL INTERSTATE - Ramp	2.139
TOTAL INTERSTATE	7.723

TOTAL, TRAVELED HIGHWAYS, FEB. 10, 2007: 78.544
(Excludes Class 4 and Legal Trail Mileage)

DISCLAIMER:
The untraveled highways (laid-out town highways), discontinued highways, and legal trails shown hereon are those of which the Agency of Transportation has record; others may exist.
Highway and bridge data by the Agency of Transportation, Policy & Planning Division. All other data from the Vermont Center for Geographic Information.

Vermont State Plane Coordinate System
North American Datum of 1983
SPOCS Zone Identifier: 4400
Geodetic Reference System 80
4,000-meter grid, Easting - Northing

VERMONT
GENERAL HIGHWAY MAP
Town of St. Albans
FRANKLIN COUNTY

Transportation District #8

Prepared by the
Vermont Agency of Transportation
Policy & Planning Division
in cooperation with
U.S. Department of Transportation
Federal Highway Administration

Mileage as of: Feb. 10, 2007
Map generated: October, 2007

SCALE: 1:31680

