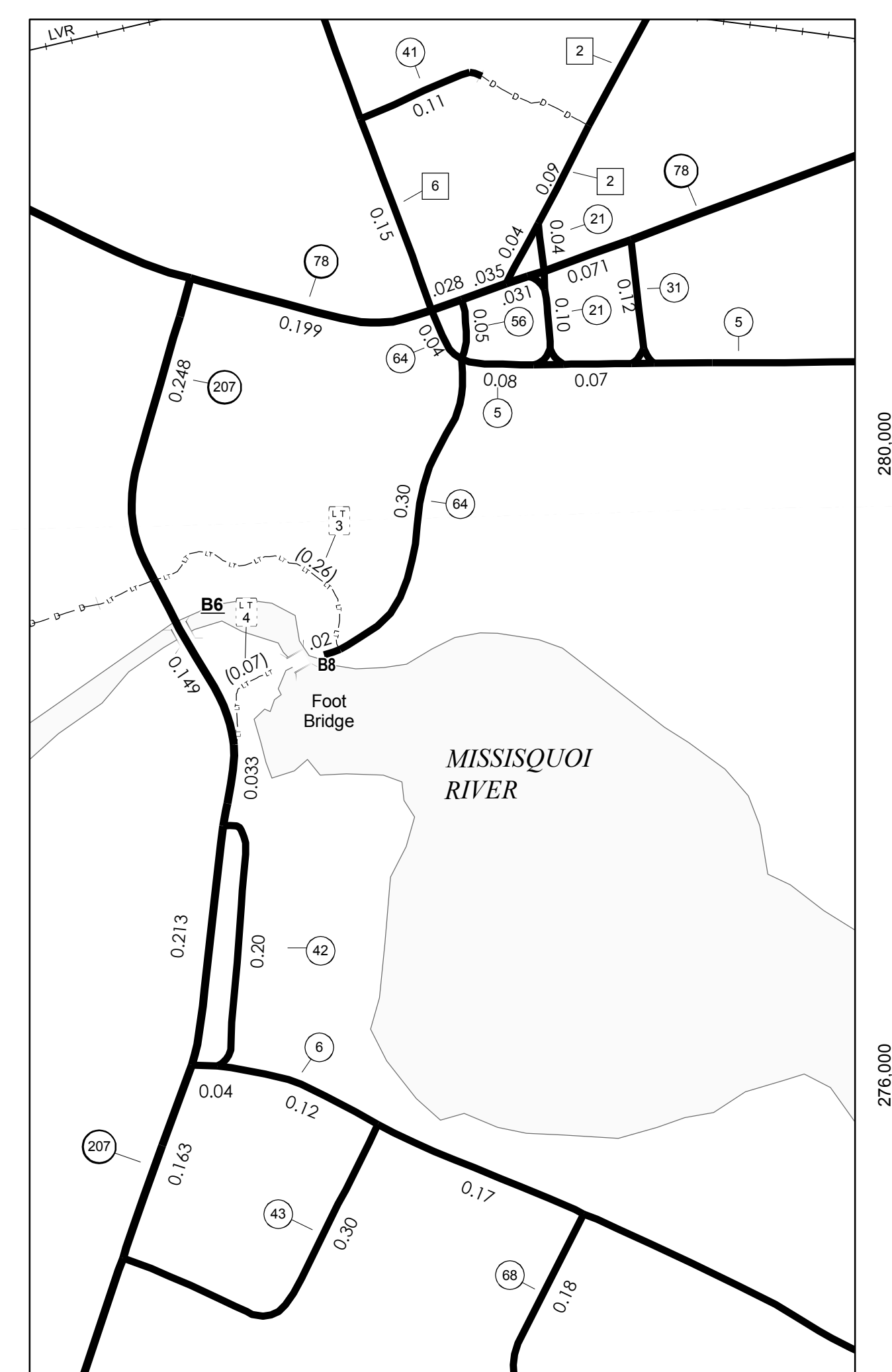
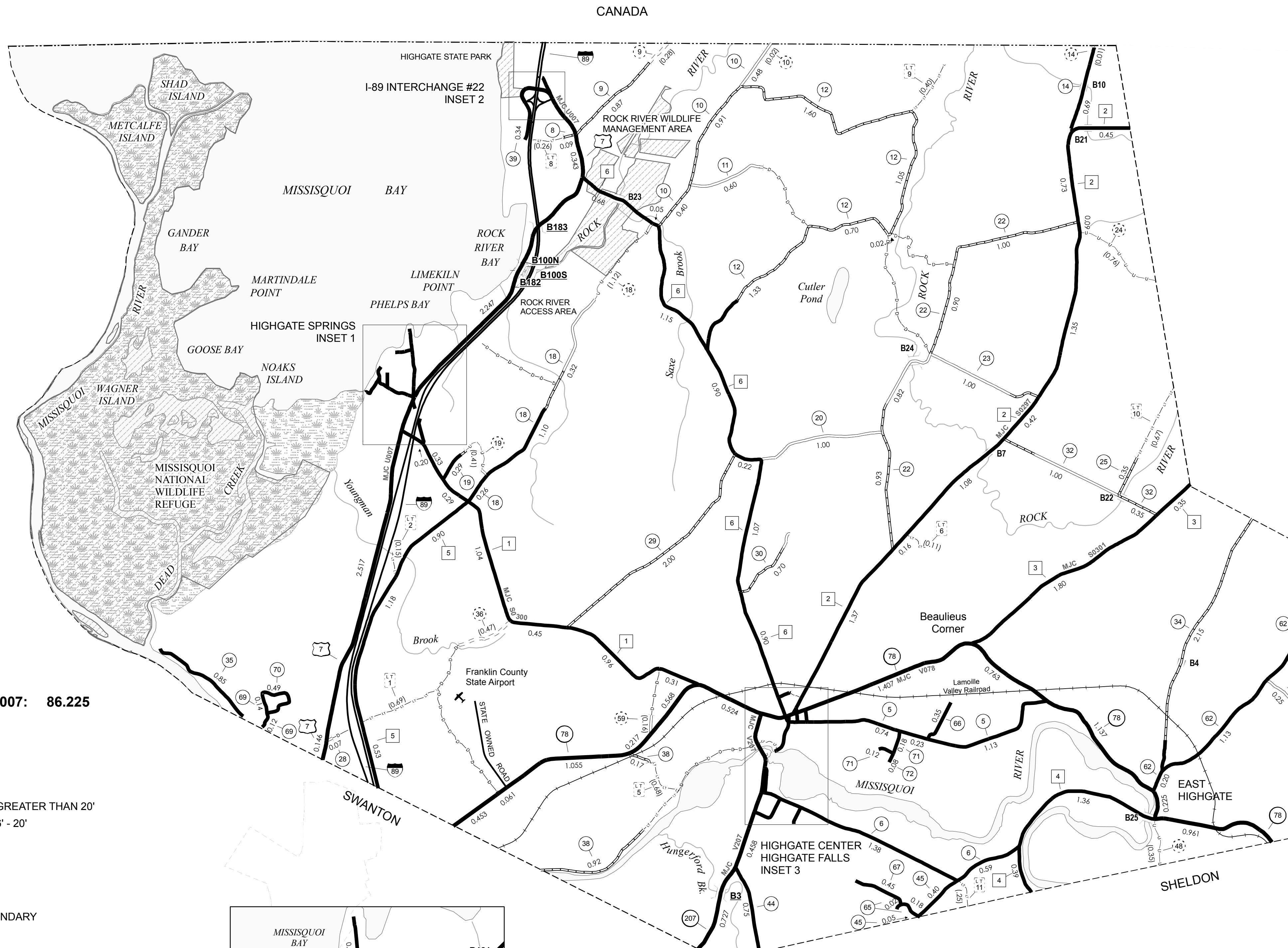


TOWN HWY. NO.	LENGTH IN MILES CLASS 3	LENGTH IN MILES CLASS 4	LEGAL TRAIL NO.	LENGTH IN MILES
5	2.250		1	(0.690)
6	2.300		2	(0.150)
8	0.090		3	(0.260)
9	0.870		4	(0.070)
10	1.790	(0.280)	5	(0.680)
11	0.600	(0.020)	6	(0.110)
12	4.700		7	(0.750)
14	0.690	(0.010)	8	(0.260)
15	0.110		9	(0.400)
16	0.570		10	(0.670)
17	0.430		11	(0.250)
18	1.680	(0.770)		
19	0.290	(0.350)		
20	1.000	(0.410)		
21	0.140			
22	3.650			
23	1.000			
24		(0.760)		
25	0.350			
28	0.070			
29	2.000			
30	0.700			
31	0.120			
32	1.350			
34	2.150			
35	0.850			
36		(0.470)		
38	1.090			
39	0.340			
41	0.110			
42	0.200			
43	0.300			
44	0.750			
45	0.450			
48		(0.350)		
49	0.250			
50	1.210			
51	1.000			
53	1.270			
54		(0.150)		
55	0.150			
56	0.050			
58	0.090			
59		(0.160)		
60	0.180			
61	0.150			
62	2.530			
64	0.360			
65	0.200			
66	0.350			
67	0.450			
68	0.180			
69	0.260			
70	0.490			
71	0.300			
72	0.080			
TOTAL	42.540	3.730		

MILEAGE SUMMARY

CLASS 2		
TH-1	3.580	
TH-2	5.780	
TH-3	2.150	
TH-4	1.750	
TH-5	2.610	
TH-6	5.120	
TOTAL CLASS 2	20.990	
CLASS 3		
TOTAL CLASS 3	42.540	
TOTAL TOWN	63.530	
STATE HIGHWAY		
VT-78	7.735	
VT-207	1.991	
TOTAL STATE HIGHWAY	9.726	
US HIGHWAY		
US-7	6.209	
TOTAL US HIGHWAY	6.209	
TOTAL STATE	15.935	
INTERSTATE		
I-89	6.287	
TOTAL INTERSTATE	6.287	
INTERSTATE - Ramp		
I-89	0.473	
TOTAL INTERSTATE - Ramp	0.473	
TOTAL INTERSTATE	6.760	

* This portion of town highway is Class 3, but is functionally Class 4
TOTAL, TRAVELED HIGHWAYS, FEB. 10, 2007: 86.225
 (Excludes Class 4 and Legal Trail Mileage)

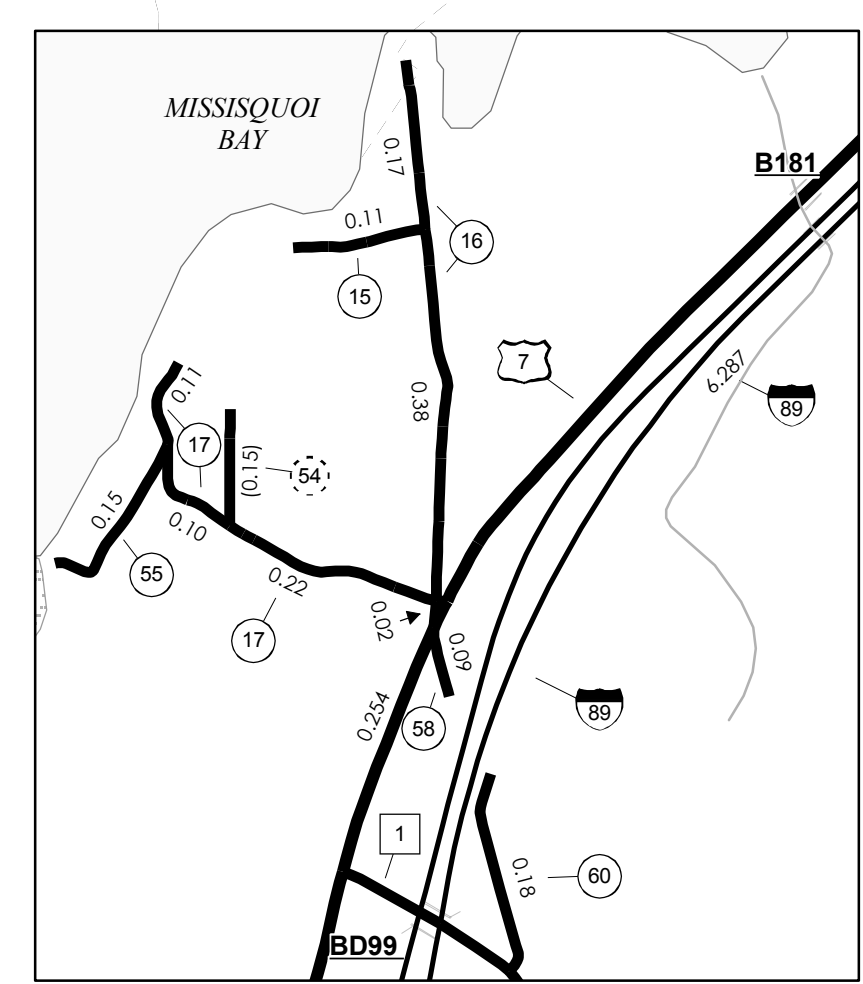


HIGHGATE CENTER HIGHGATE FALLS INSET 3
 SCALE 1:6336
 0 0.1 0.2 0.4 Miles

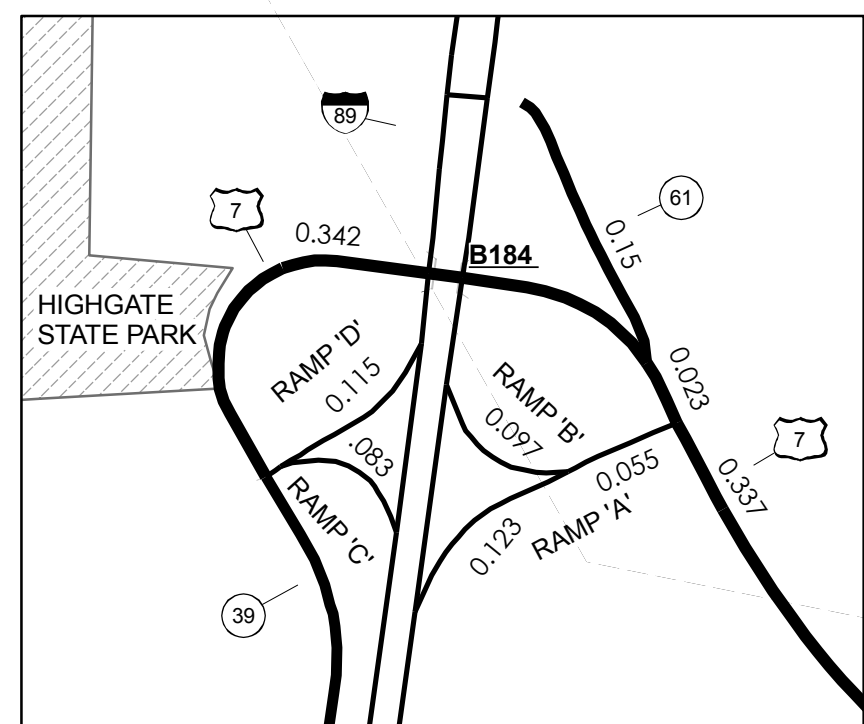
- HIGHWAYS**
 - INTERSTATE
 - U.S. ROUTE
 - STATE ROUTE
 - CLASS 1
 - CLASS 2
 - CLASS 3
 - CLASS 4
 - LEGAL TRAIL
 - INTERSTATE OR DIVIDED HIGHWAY
 - STATE - HARD SURFACE OR PAVED
 - TOWN - HARD SURFACE OR PAVED
 - GRAVEL
 - SOIL OR GRADED AND DRAINED EARTH
 - UNIMPROVED OR PRIMITIVE
 - IMPASSABLE OR UNTRAVELED
 - LEGAL TRAIL
 - DISCONTINUED
 - HIGHWAY CLASS CHANGE
 - RAILROAD
 - AIRPORT
- PUBLIC LAND**
 - BRIDGE OR CULVERT
 - BRIDGE OR CULVERT GREATER THAN 20'
 - BRIDGE OR CULVERT 6' - 20'
- POLITICAL SUBDIVISIONS**
 - STATE BOUNDARY
 - COUNTY BOUNDARY
 - TOWN BOUNDARY
 - VILLAGE BOUNDARY
 - URBAN COMPACT BOUNDARY
- WATER BODIES**
 - OPEN WATER
 - SWAMP
 - STREAM OR BROOK
- BRIDGE IDENTIFIERS**
 - B34 STATE BRIDGE IDENTIFIER
 - B34 TOWN BRIDGE IDENTIFIER
- FEDERAL CLASSIFICATION IDENTIFIER**
 - FAU URBAN ARTERIAL OR COLLECTOR
 - MA MINOR ARTERIAL
 - MJC MAJOR COLLECTOR
 - MNC MINOR COLLECTOR
 - PA PRINCIPAL ARTERIAL

Vermont State Plane Coordinate System
 North American Datum of 1983
 SPCS_Zone_Identifier: 4400
 Geodetic Reference System 80
 4,000-meter grid, Easting - Northing

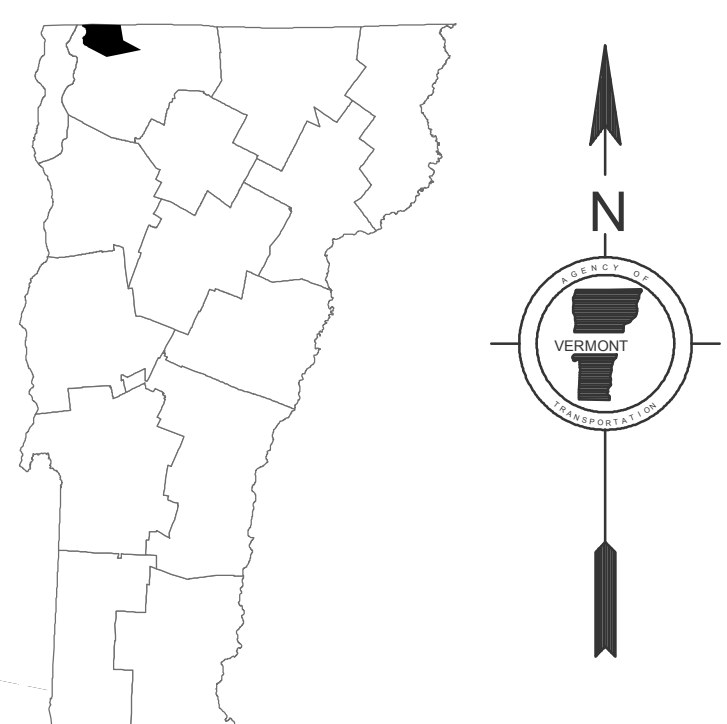
DISCLAIMER:
 The untraveled highways (laid-out town highways), discontinued highways, and legal trails shown hereon are those of which the Agency of Transportation has record; others may exist.
 Highway and bridge data by the Agency of Transportation, Policy & Planning Division. All other data from the Vermont Center for Geographic Information.



HIGHGATE SPRINGS INSET 1
 SCALE 1:12000
 0 0.5 1 Miles



I-89 INTERCHANGE #22 INSET 2
 SCALE 1:6336
 0 0.1 0.2 0.4 Miles



VERMONT GENERAL HIGHWAY MAP
Town of Highgate
 FRANKLIN COUNTY

Transportation District #8

Prepared by the
 Vermont Agency of Transportation
 Policy & Planning Division
 in cooperation with
 U.S. Department of Transportation
 Federal Highway Administration

Mileage as of Feb. 10, 2007
 Map generated: October, 2007

