

TOWN HWY. NO.	LENGTH IN MILES	CLASS
6	3.850	4
7	0.050	
8	1.500	
9	1.430	
* 9	(0.040)	
10	2.800	
11	(0.980)	
12	1.370	
13	1.450	(0.700)
14	0.800	
15	1.900	(0.740)
16	0.300	
17	1.650	
18	0.900	
21	0.150	(2.200)
22	2.200	
23	0.130	(0.370)
24	0.550	
25	0.700	
26	0.700	
29	2.790	
30	0.270	
31	1.100	
32	1.100	
33	(0.300)	
34	0.230	
* 35	(0.080)	
37	2.180	
38	0.110	
<b>TOTAL</b>	<b>30.210</b>	<b>5.410</b>

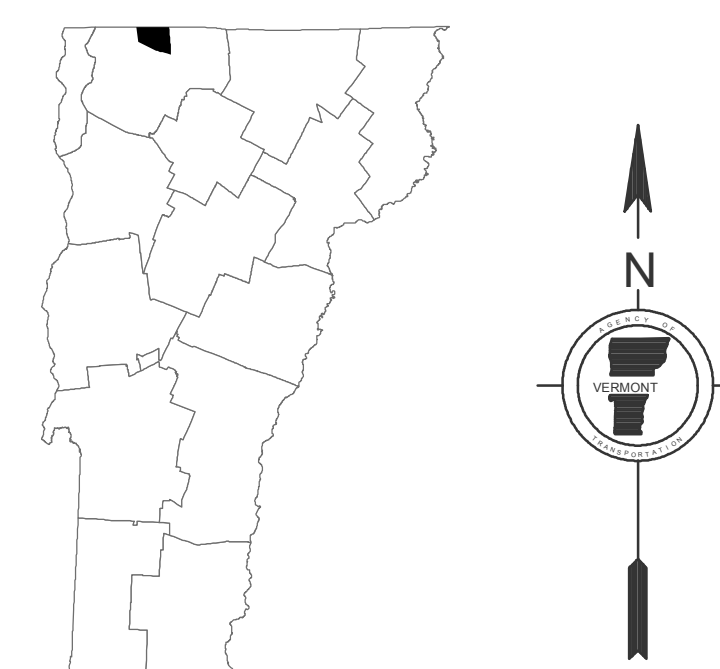
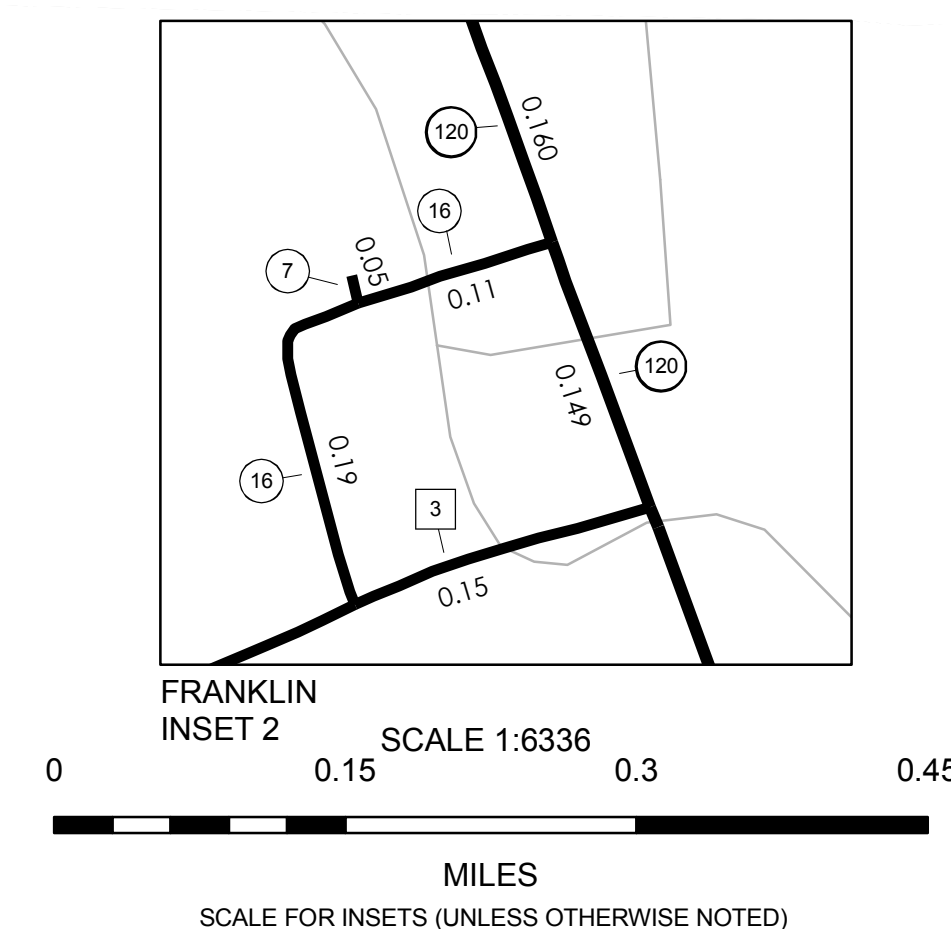
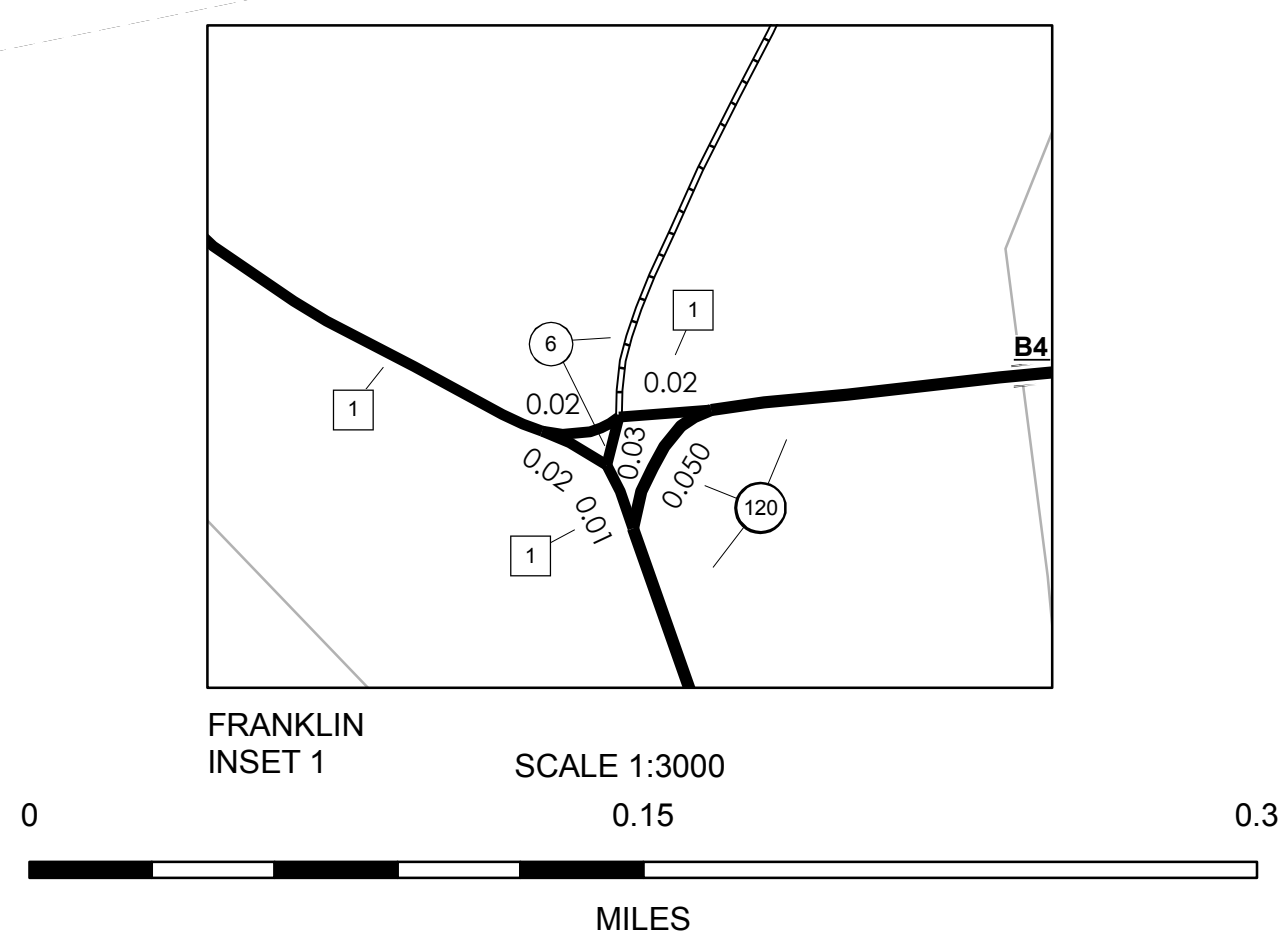
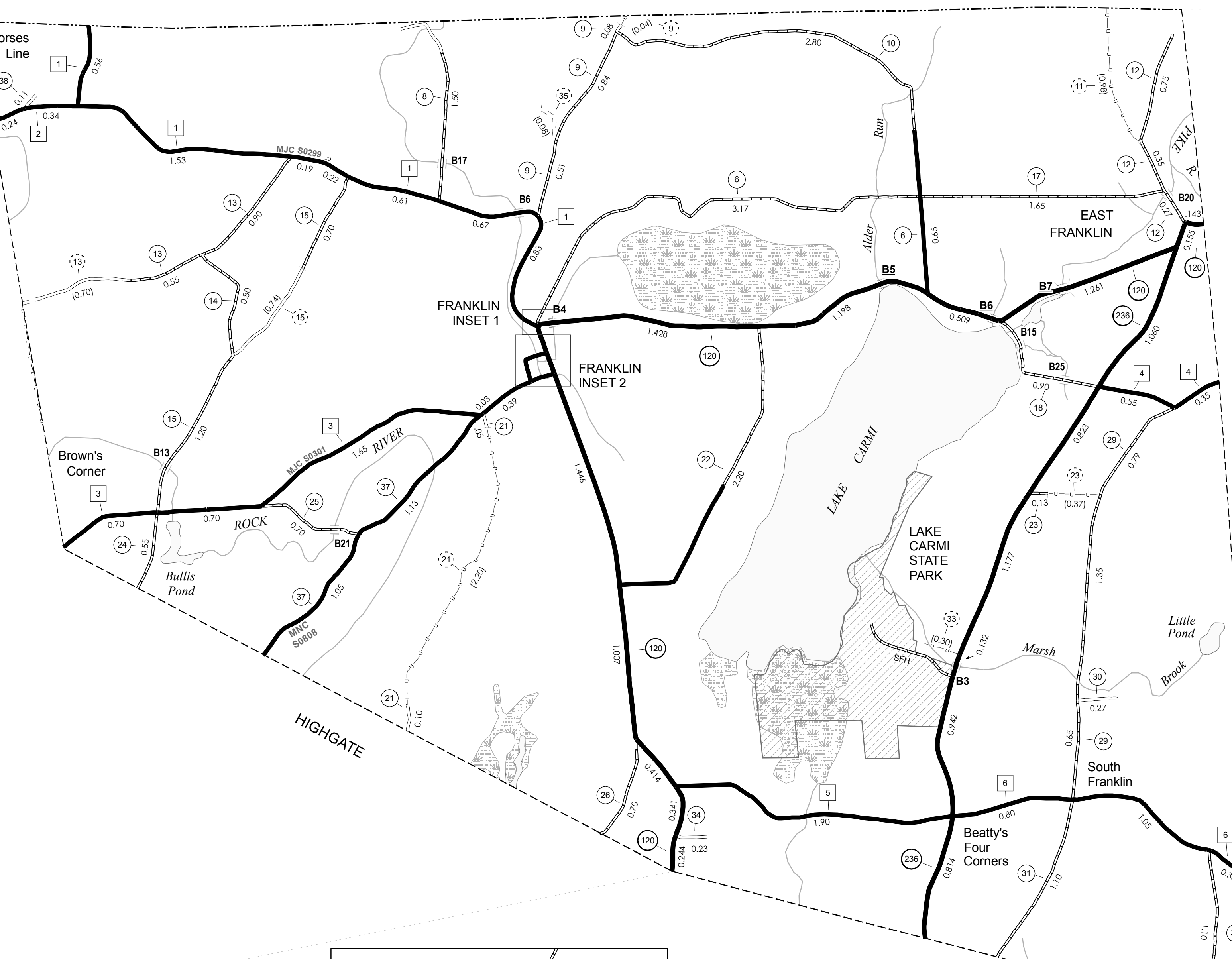
\* This portion of town highway is Class 3, but is functionally Class 4

MILEAGE SUMMARY		
<b>CLASS 2</b>		
TH-1	4.680	
TH-2	0.580	
TH-3	3.620	
TH-4	0.900	
TH-5	1.900	
TH-6	2.150	
<b>TOTAL CLASS 2</b>	<b>13.830</b>	
<b>CLASS 3</b>		
<b>TOTAL CLASS 3</b>	<b>30.210</b>	
<b>TOTAL TOWN</b>	<b>44.040</b>	
<b>STATE HIGHWAY</b>		
VT-120	8.505	
VT-236	4.948	
<b>TOTAL STATE HIGHWAY</b>	<b>13.453</b>	
<b>TOTAL STATE</b>	<b>13.453</b>	

**TOTAL, TRAVELED HIGHWAYS, FEB. 10, 2007: 57.493**  
(Excludes Class 4 and Legal Trail Mileage)

- HIGHWAYS**
- INTERSTATE
- U.S. ROUTE
- STATE ROUTE
- CLASS 1
- CLASS 2
- CLASS 3
- CLASS 4
- STATE - HARD SURFACE OR PAVED
- TOWN - HARD SURFACE OR PAVED
- GRAVEL
- SOIL OR GRADED AND DRAINED EARTH
- UNIMPROVED OR PRIMITIVE
- IMPASSABLE OR UNTRAVELED
- LEGAL TRAIL; 70
- DISCONTINUED
- HIGHWAY CLASS CHANGE
- RAILROAD
- PUBLIC LAND
- POLITICAL SUBDIVISIONS**
- STATE BOUNDARY
- COUNTY BOUNDARY
- TOWN BOUNDARY
- VILLAGE BOUNDARY
- URBAN COMPACT BOUNDARY
- WATER BODIES**
- OPEN WATER
- SWAMP
- STREAM OR BROOK
- BRIDGE OR CULVERT**
- BRIDGE OR CULVERT GREATER THAN 20'
- BRIDGE OR CULVERT 6' - 20'
- B34 STATE BRIDGE IDENTIFIER
- B34 TOWN BRIDGE IDENTIFIER
- FEDERAL CLASSIFICATION IDENTIFIER**
- FAU URBAN ARTERIAL OR COLLECTOR
- MA MINOR ARTERIAL
- MJC MAJOR COLLECTOR
- MNC MINOR COLLECTOR
- PA PRINCIPAL ARTERIAL

**DISCLAIMER:**  
The untraveled highways (laid-out town highways), discontinued highways, and legal trails shown hereon are those of which the Agency of Transportation has record; others may exist.  
Highway and bridge data by the Agency of Transportation, Policy & Planning Division. All other data from the Vermont Center for Geographic Information.



**VERMONT**  
**GENERAL HIGHWAY MAP**  
**Town of Franklin**  
FRANKLIN COUNTY

Transportation District #8

Prepared by the  
Vermont Agency of Transportation  
Policy & Planning Division  
in cooperation with  
U.S. Department of Transportation  
Federal Highway Administration

Mileage as of: Feb. 10, 2007  
Map generated: October, 2007

