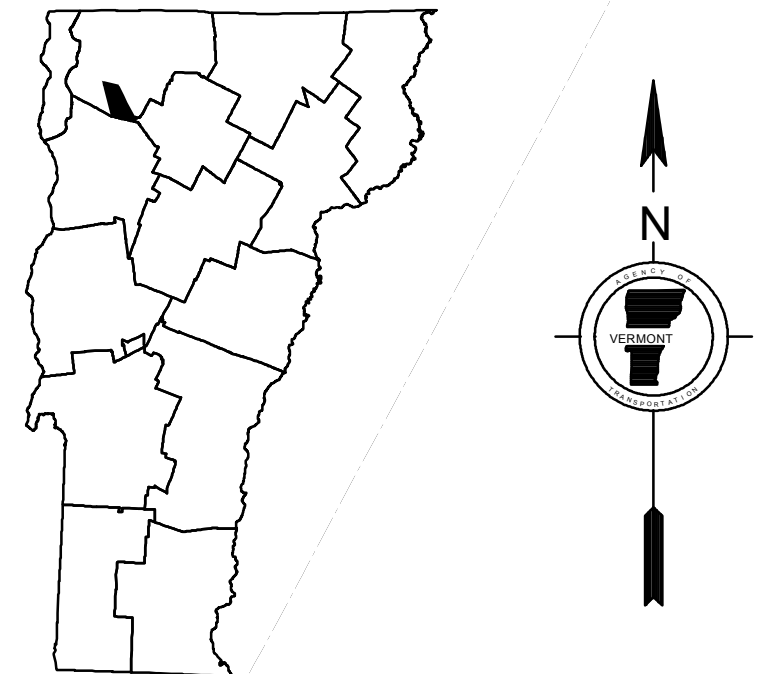
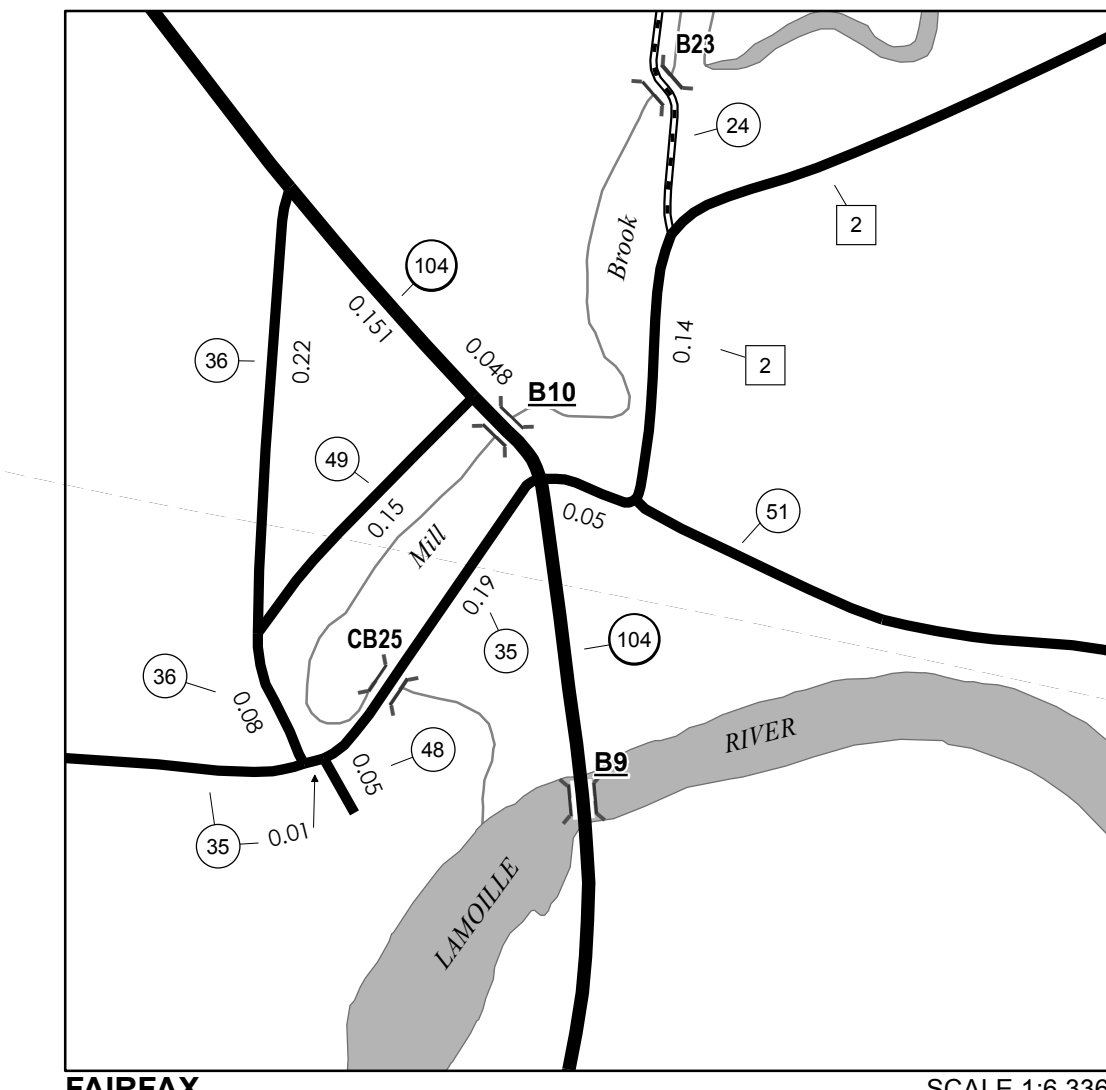


TOWN HWY. No.	LENGTH IN MILES CLASS 3	LENGTH IN MILES CLASS 4	TOWN HWY. No.	LENGTH IN MILES CLASS 3	LENGTH IN MILES CLASS 4
6	0.66	(0.26)	36	0.30	
7	0.70		37	1.47	
9	0.65		38		(0.63)
10	2.61		39	3.80	
11	2.36		40	0.42	(1.18)
12	0.70		41	0.60	
13	3.30		42	0.40	
14	0.60		43	0.10	
15	2.60		44	0.55	
16	1.15		45	0.30	
17	2.25		46	0.70	
18		(0.15)	47	0.30	
19		(0.63)	48	0.05	
20	0.70		49	0.15	
21	2.60		50	0.21	
22	0.28	(1.07)	51	1.86	
23	0.25		52	0.70	
24	0.65		53	0.15	
25	3.73		54	0.05	
26	0.50		55	0.43	
27		(0.45)	56	0.30	
28	2.05		57	0.10	
29	2.50		58	0.05	
30	0.25		59	0.42	
31	1.05		60	0.46	
32	0.65		61	0.12	
33	1.92	(0.50)	62	0.04	
34	0.08		63	0.06	
35	1.30		64		(0.59)
<b>TOTAL</b>			<b>50.18</b>	<b>5.46</b>	

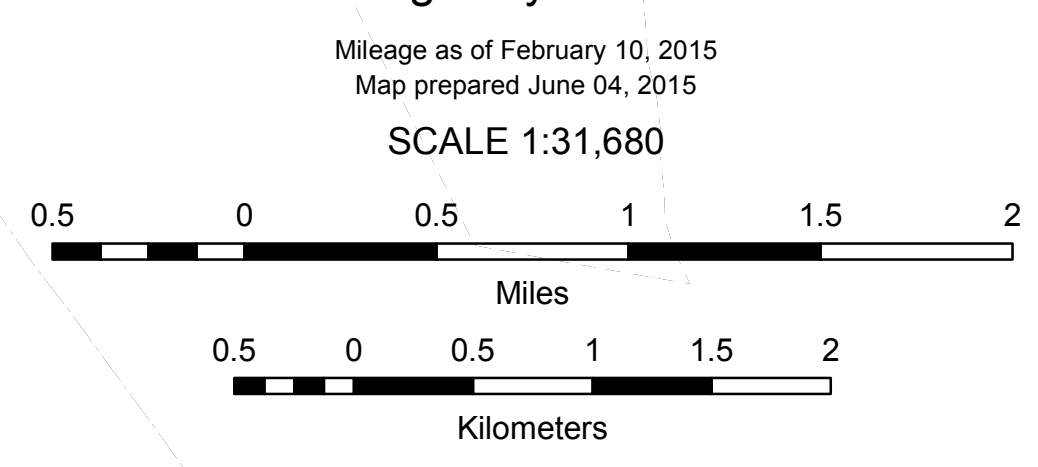
**MILEAGE SUMMARY**

CLASS 2		
TH-1	5.200	
TH-2	3.620	
TH-3	0.030	
TH-4	0.570	
TH-5	1.900	
<b>TOTAL CLASS 2</b>		11.320
CLASS 3		
<b>TOTAL CLASS 3</b>		50.18
<b>TOTAL TOWN</b>		61.500
STATE HIGHWAY		
VT-104	14.185	
VT-104A	1.185	
VT-128	0.787	
<b>TOTAL STATE HIGHWAY</b>		16.137
<b>TOTAL STATE</b>		16.137
INTERSTATE		
I-89	1.240	
<b>TOTAL INTERSTATE</b>		1.240
<b>TOTAL INTERSTATE</b>		1.240

**TOTAL, TRAVELED HIGHWAYS, FEB. 10, 2015: 78.877**  
 (Excludes Class 4, Legal Trail, and Unidentified Corridor Mileage)



**VERMONT**  
**GENERAL HIGHWAY MAP**  
**Town of Fairfax**  
 FRANKLIN COUNTY  
 Transportation District #8  
 Prepared by the  
 Vermont Agency of Transportation  
 Division of Policy, Planning and Intermodal Development  
 in cooperation with  
 U.S. Department of Transportation  
 Federal Highway Administration



- HIGHWAYS**
- INTERSTATE
  - U.S. ROUTE
  - STATE ROUTE
  - CLASS 1
  - CLASS 2
  - CLASS 3
  - CLASS 4
  - LEGAL TRAIL
- INTERSTATE OR DIVIDED HIGHWAY  
 STATE - HARD SURFACE OR PAVED  
 TOWN - HARD SURFACE OR PAVED  
 GRAVEL  
 SOIL OR GRADED AND DRAINED EARTH  
 UNIMPROVED OR PRIMITIVE  
 IMPASSABLE OR UNTRAVELED  
 LEGAL TRAIL  
 DISCONTINUED  
 HIGHWAY CLASS CHANGE  
 RAILROAD  
 INACTIVE RAILROAD  
 NATIONAL FOREST ROAD  
 STATE FOREST HIGHWAY  
 PARK AND RIDE
- PUBLIC LAND - GREEN MOUNTAIN NATIONAL FOREST**  
 PUBLIC LAND - STATE/MUNICIPAL
- POLITICAL SUBDIVISIONS**
- STATE BOUNDARY
  - COUNTY BOUNDARY
  - TOWN BOUNDARY
  - VILLAGE BOUNDARY
  - URBAN COMPACT BOUNDARY
  - WATER BODY
  - STREAM OR BROOK
- BRIDGE OR CULVERT**
- BRIDGE OR CULVERT > 20'
  - BRIDGE OR CULVERT 6' - 20'
  - VOBCIT BRIDGE
  - VOBCIT CULVERT > 6'
  - STATE BRIDGE OR CULVERT IDENTIFIER
  - TOWN BRIDGE OR CULVERT IDENTIFIER
- FEDERAL CLASSIFICATION IDENTIFIER**
- FAU URBAN ARTERIAL OR COLLECTOR
  - MA MINOR ARTERIAL
  - MJC MAJOR COLLECTOR
  - MNC MINOR COLLECTOR
  - PA PRINCIPAL ARTERIAL

**DISCLAIMER:**  
 The untraveled highways (laid-out town highways), discontinued highways, and legal trails hereon are those of which the Agency of Transportation has record; others may exist.

Highway and bridge data by the Agency of Transportation. Town short structures are drawn from the Vermont Online Bridge & Culvert Inventory Tool (VOBCIT) database. All other data from the Vermont Center for Geographic Information. Only named streams are shown.

Vermont State Plane Coordinate System  
 North American Datum of 1983  
 SPCS\_Zone\_Identifier: 4400  
 Geodetic Reference System 80  
 4,000-meter grid, Easting - Northing