

TOWN HWY. NO.	LENGTH IN MILES	CLASS
3		4
6	0.66	(0.26)
7	0.70	
9	0.65	
10	2.61	
11	2.36	
12	0.70	
13	3.30	
14	0.60	
15	2.60	
16	1.15	
17	2.25	
18	(0.15)	
19	(0.63)	
20	0.70	
21	2.60	
22	0.28	(1.07)
23	0.25	
24	0.65	
25	3.73	
26	0.50	
27	(0.45)	
28	2.05	
29	2.50	
30	0.25	
31	1.05	
32	0.65	
33	1.92	(0.50)
34	0.08	
35	1.30	
36	0.30	
37	1.47	
38	(0.63)	
39	3.80	
40	0.42	(1.18)
41	0.60	
42	0.40	
43	0.10	
44	0.55	
45	0.30	
46	0.70	
47	0.30	
48	0.05	
49	0.15	
50	0.21	
51	1.86	
52	0.70	
53	0.15	
54	0.05	
55	0.43	
56	0.30	
57	0.10	
58	0.05	
59	0.42	
60	0.46	
61	0.12	
62	0.04	
64	(0.59)	
TOTAL	50.12	5.46

MILEAGE SUMMARY	
CLASS 2	
TH-1	5.200
TH-2	3.620
TH-3	0.030
TH-4	0.570
TH-5	1.900
TOTAL CLASS 2	11.320
CLASS 3	
TOTAL CLASS 3	50.120
TOTAL TOWN	61.440
STATE HIGHWAY	
VT-104	14.185
VT-104A	1.165
VT-128	0.787
TOTAL STATE HIGHWAY	16.137
TOTAL STATE	16.137
INTERSTATE	
I-89	1.240
TOTAL INTERSTATE	1.240
TOTAL INTERSTATE	1.240

TOTAL, TRAVELED HIGHWAYS, FEB. 10, 2010: 78.817
(Excludes Class 4 and Legal Trail Mileage)

ST. ALBANS

FAIRFIELD

NORTH FAIRFAX

Merill Four Corners

Buck Hollow

VERMONT

FLETCHER

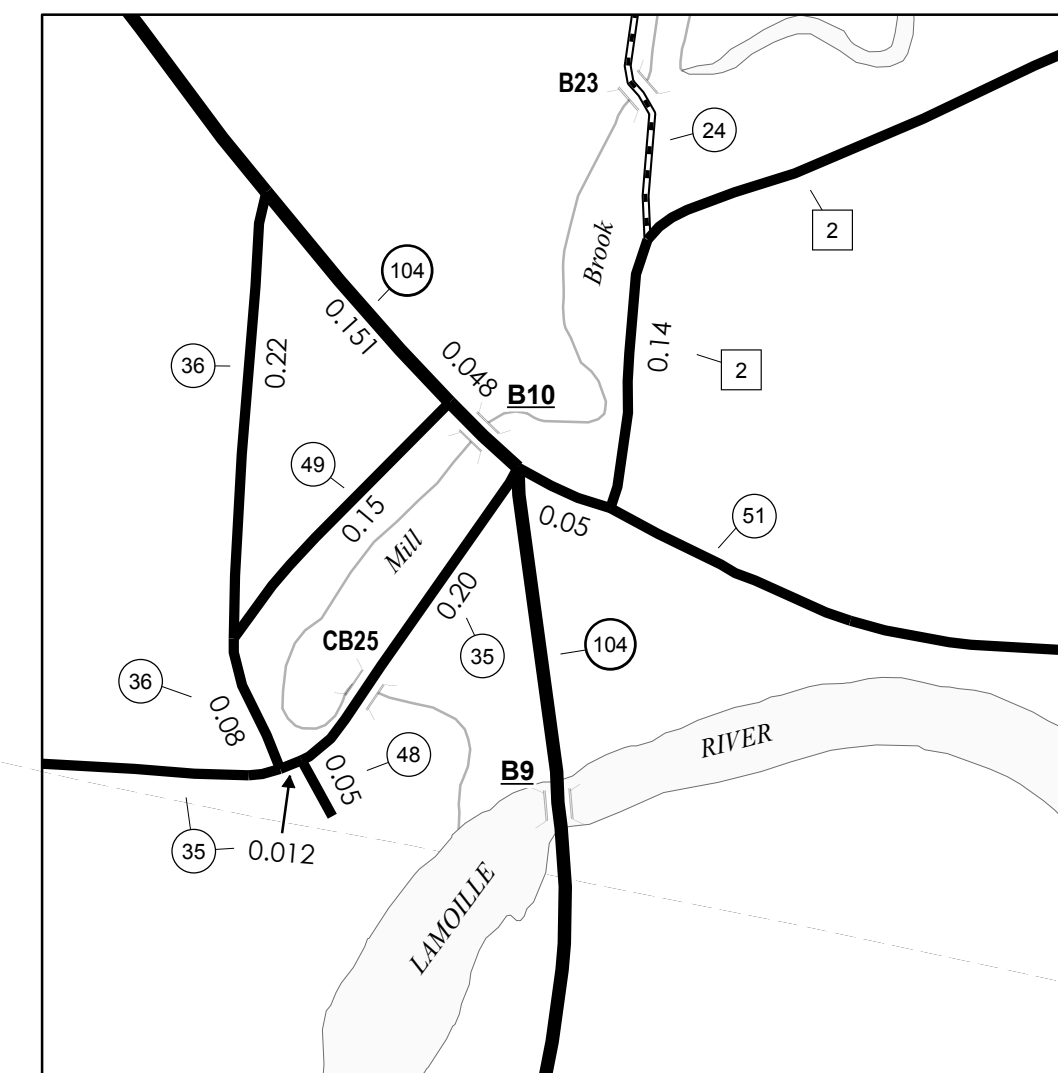
Huntsville

Sanderson Corner

MILTON

WESTFORD
CHITTENDEN COUNTY

CAMBRIDGE



FAIRFAX INSET 1 INSET SCALE 1:6336

0 0.1 0.2 Miles

- HIGHWAYS**
- INTERSTATE
 - U.S. ROUTE
 - STATE ROUTE
 - CLASS 1
 - CLASS 2
 - CLASS 3
 - CLASS 4
 - LEGAL TRAIL
 - INTERSTATE OR DIVIDED HIGHWAY
 - STATE - HARD SURFACE OR PAVED
 - TOWN - HARD SURFACE OR PAVED
 - GRAVEL
 - SOIL OR GRADED AND DRAINED EARTH
 - UNIMPROVED OR PRIMITIVE
 - IMPASSABLE OR UNTRAVELED
 - LEGAL TRAIL
 - DISCONTINUED
 - HIGHWAY CLASS CHANGE
 - RAILROAD

- PUBLIC LAND
- POLITICAL SUBDIVISIONS**
- STATE BOUNDARY
- COUNTY BOUNDARY
- TOWN BOUNDARY
- VILLAGE BOUNDARY
- URBAN COMPACT BOUNDARY
- WATER BODIES
- STREAM OR BROOK
- BRIDGE OR CULVERT**
- BRIDGE OR CULVERT GREATER THAN 20'
- BRIDGE OR CULVERT 6' - 20'
- TOWN SHORT STRUCTURE
- B34 / C34 STATE BRIDGE OR CULVERT IDENTIFIER**
- B34 / C34 TOWN BRIDGE OR CULVERT IDENTIFIER**

- FEDERAL CLASSIFICATION IDENTIFIER**
- FAU URBAN ARTERIAL OR COLLECTOR
 - MA MINOR ARTERIAL
 - MJC MAJOR COLLECTOR
 - MNC MINOR COLLECTOR
 - PA PRINCIPAL ARTERIAL

STRUCTURES - SURFACE WATER NOTE:

STRUCTURES: Town short structures (bridges or culverts from 4-feet to less than 20-feet) are drawn from the Vermont Online Bridge & Culvert Inventory Tool (VOBCIT) database. NOTE: Town shorts are not consistently tagged within VOBCIT.

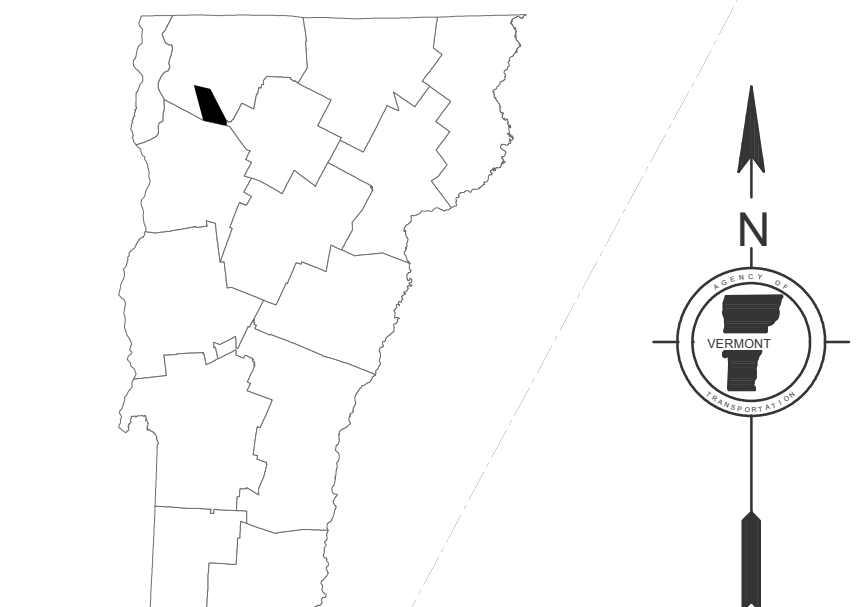
The surface waters are from the Vermont Hydrological Dataset (VHD). Only the named streams are shown.

DISCLAIMER:

The untraveled highways (laid-out town highways), discontinued highways, and legal trails shown hereon are those of which the Agency of Transportation has record; others may exist.

Highway and bridge data by the Agency of Transportation. All other data from the Vermont Center for Geographic Information.

Vermont State Plane Coordinate System
North American Datum of 1983
SPCS Zone Identifier: 4400
Geodetic Reference System 80
4,000-meter grid, Easting - Northing



VERMONT
GENERAL HIGHWAY MAP
Town of Fairfax

FRANKLIN COUNTY

Transportation District #8

Prepared by the
Vermont Agency of Transportation
Division of Planning, Outreach
and Community Affairs
in cooperation with

U.S. Department of Transportation
Federal Highway Administration

Mileage as of February 10, 2010
Map prepared April 7, 2010

SCALE 1:31,680

0.5 0 0.5 1 1.5 2
Miles

1 0 1 2
Kilometers