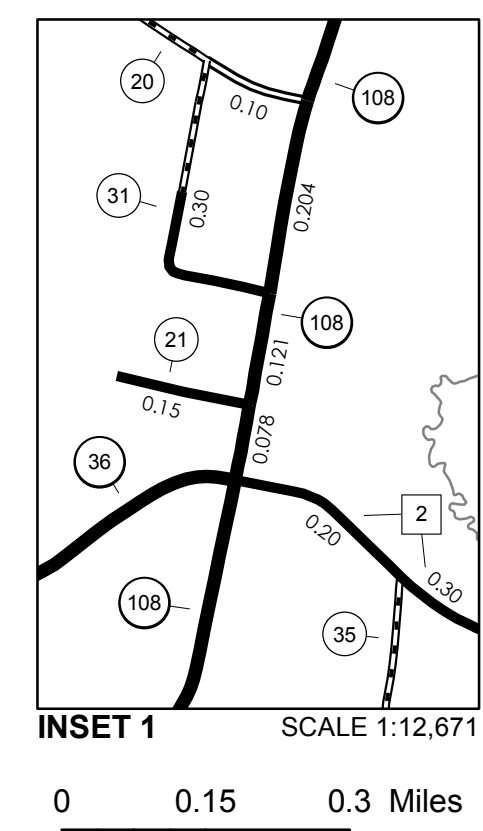
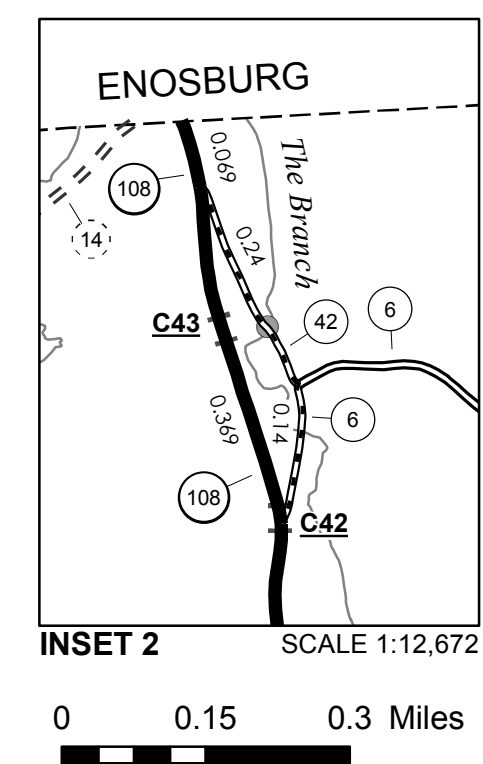


TOWN HWY. No.	LENGTH IN MILES CLASS 3	CLASS 4
4	0.35	
5	0.45	
6	0.79	
7	0.33	
8	3.20	
9	0.25	
10	1.70	
11	0.20	
13	0.51	(1.54)
14	1.48	(1.38)
15	0.64	
17		(0.65)
18	0.36	(0.14)
19	0.13	(0.62)
20	3.09	
21	0.15	
22	0.22	(0.68)
23	0.90	
25	1.80	
26		(0.20)
27	0.65	(0.18)
28	1.10	
29	1.03	
30	0.10	
31	0.30	
32	1.58	(0.12)
33	0.29	(0.79)
34	2.06	
35	1.30	(1.55)
36	0.20	
37	2.85	
38	2.28	
39	0.48	(0.72)
40	0.11	(1.29)
42	0.24	
43	0.14	
44	0.38	
45	0.17	
TOTAL	31.81	9.86

MILEAGE SUMMARY		
CLASS 2		
TH-1	2.550	
TH-2	6.810	
TOTAL CLASS 2		9.360
CLASS 3		
TOTAL CLASS 3		31.81
TOTAL TOWN		41.170
STATE HIGHWAY		
VT-36	2.507	
VT-108	8.032	
TOTAL STATE HIGHWAY		10.539
TOTAL STATE		10.539

TOTAL TRAVELED HIGHWAYS, FEB. 10, 2017: 51.709
 (Excludes Class 4 and Legal Trail Mileage)

LEGAL TRAIL No.	LENGTH IN MILES LEGAL TRAIL
1	(0.25)
3	(0.20)
4	(0.55)
5	(0.20)
TOTAL	1.20



DISCLAIMER:
 The untraveled highways (laid-out town highways), discontinued highways, and legal trails hereon are those of which the Agency of Transportation has record; others may exist.

Highway and bridge data by the Agency of Transportation. Town short structures drawn from the Vermont Online Bridge & Culvert Inventory Tool (VOBCIT) database. All other data from the Vermont Center for Geographic Information. Only named streams shown.

Vermont State Plane Coordinate System
 North American Datum of 1983
 SPCS_Zone_Identifier: 4400
 Geodetic Reference System 80
 4,000-meter grid, Easting - Northing

VERMONT GENERAL HIGHWAY MAP

Town of Bakersfield

FRANKLIN COUNTY
 Transportation District #8
 Prepared by the
 Vermont Agency of Transportation
 Division of Policy, Planning and Intermodal Development
 in cooperation with
 U.S. Department of Transportation
 Federal Highway Administration

