

TOWN HWY. No.	CLASS 3	CLASS 4	LENGTH IN MILES
1	0.40		
2	0.12		
3	0.15	(0.50)	
4		(0.40)	
5		(0.60)	
6		(1.03)	
7		(1.42)	
8	0.05		
9	0.18		
10		(0.36)	
11		(0.08)	
12		(0.37)	
13	0.03		
14	0.05		
<b>TOTAL</b>	<b>0.98</b>	<b>4.76</b>	

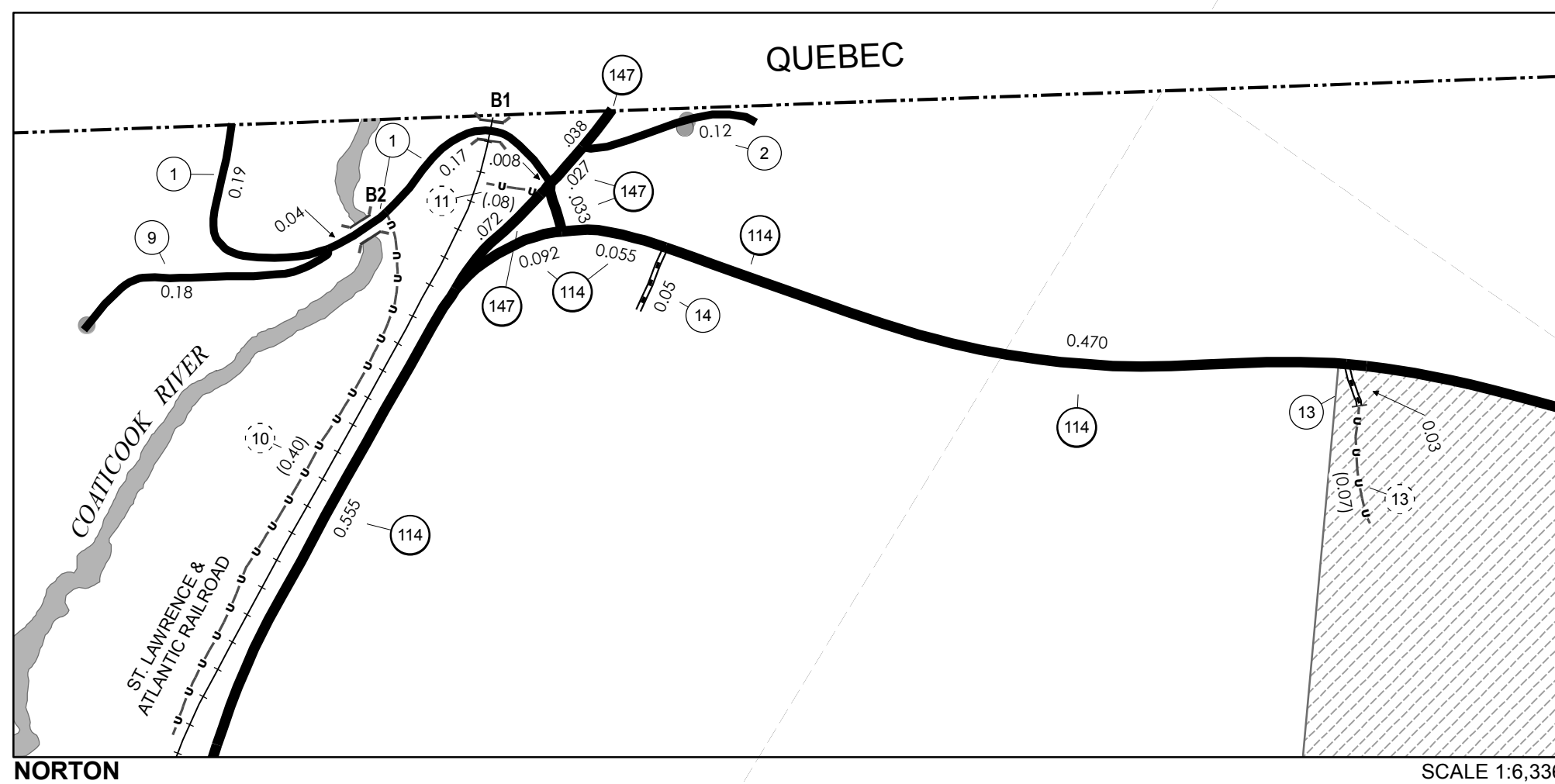
TOWN HWY. No.	LENGTH IN MILES "NOT UP TO STANDARD"
10	(0.04)
13	(0.07)
<b>TOTAL</b>	<b>0.11</b>

\* The sections of the town highways listed above are legally Class 3, but have been deemed "Not Up To Standard" and are functionally Class 4 Town Highways

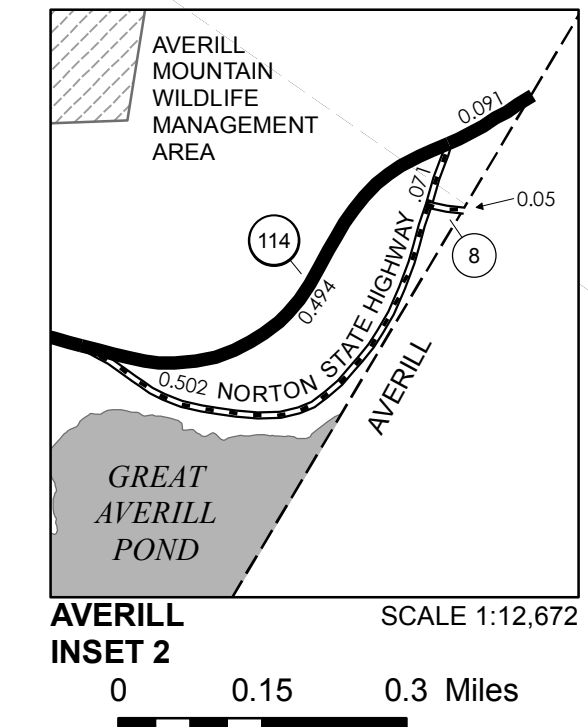
**MILEAGE SUMMARY**

CLASS 3	TOTAL CLASS 3	0.98
<b>TOTAL TOWN</b>	<b>0.980</b>	
STATE HIGHWAY		
VT-114	9.982	
VT-147	0.178	
NSH-NSH	0.573	
<b>TOTAL STATE HIGHWAY</b>	<b>10.733</b>	
<b>TOTAL STATE</b>	<b>10.733</b>	

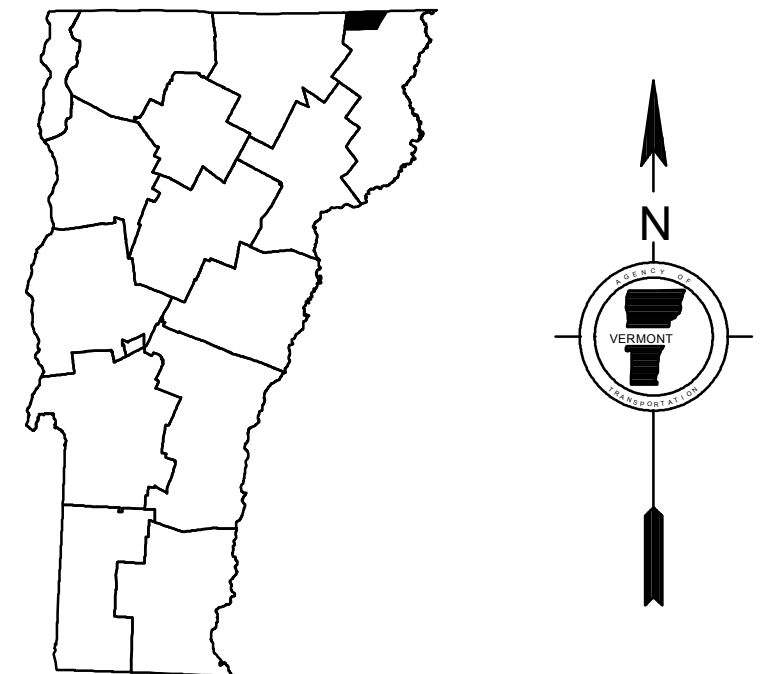
**TOTAL, TRAVELED HIGHWAYS, FEB. 10, 2016: 11.713**  
(Excludes Class 4 and Legal Trail Mileage)



0 0.08 0.16 Miles



0 0.15 0.3 Miles



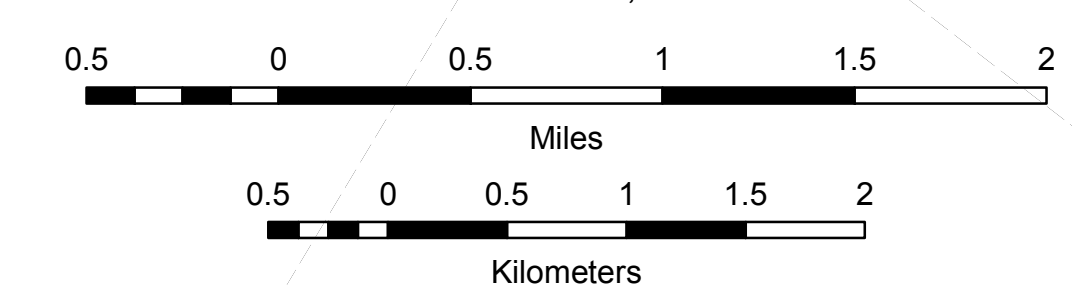
**VERMONT**  
**GENERAL HIGHWAY MAP**  
**Town of Norton**  
ESSEX COUNTY

Transportation District #9

Prepared by the  
**Vermont Agency of Transportation**  
Division of Policy, Planning and Intermodal Development  
in cooperation with  
**U.S. Department of Transportation**  
Federal Highway Administration

Mileage as of February 10, 2016  
Map prepared July 20, 2016

SCALE 1:31,680



- HIGHWAYS**
  - INTERSTATE
  - U.S. ROUTE
  - STATE ROUTE
  - CLASS 1
  - CLASS 2
  - CLASS 3
  - CLASS 4
  - LEGAL TRAIL
- INTERSTATE OR DIVIDED HIGHWAY
- STATE - HARD SURFACE OR PAVED
- TOWN - HARD SURFACE OR PAVED
- GRAVEL
- SOIL OR GRADED AND DRAINED EARTH
- UNIMPROVED OR PRIMITIVE
- IMPASSABLE OR UNTRAVELED
- LEGAL TRAIL
- DISCONTINUED
- HIGHWAY CLASS CHANGE
- RAILROAD
- INACTIVE RAILROAD
- NFR NATIONAL FOREST ROAD
- SFH STATE FOREST HIGHWAY
- P PARK AND RIDE

- PUBLIC LAND - GREEN MOUNTAIN NATIONAL FOREST
- PUBLIC LAND - STATE/MUNICIPAL
- POLITICAL SUBDIVISIONS**
  - STATE BOUNDARY
  - COUNTY BOUNDARY
  - TOWN BOUNDARY
  - VILLAGE BOUNDARY
  - URBAN COMPACT BOUNDARY
- WATER BODY
- STREAM OR BROOK
- BRIDGE OR CULVERT**
  - BRIDGE OR CULVERT > 20'
  - BRIDGE OR CULVERT 6' - 20'
  - VOBCIT BRIDGE
  - VOBCIT CULVERT > 6'
  - B34 / C34 STATE BRIDGE OR CULVERT IDENTIFIER
  - B34 / C34 TOWN BRIDGE OR CULVERT IDENTIFIER

- FEDERAL CLASSIFICATION IDENTIFIER**
  - FAU URBAN ARTERIAL OR COLLECTOR
  - MA MINOR ARTERIAL
  - MJC MAJOR COLLECTOR
  - MNC MINOR COLLECTOR
  - PA PRINCIPAL ARTERIAL

Vermont State Plane Coordinate System  
North American Datum of 1983  
SPCS\_Zone\_Identifier: 4400  
Geodetic Reference System 80  
4,000-meter grid, Easting - Northing

**DISCLAIMER:**  
The untraveled highways (laid-out town highways), discontinued highways, and legal trails herein are those of which the Agency of Transportation has record; others may exist.  
  
Highway and bridge data by the Agency of Transportation. Town short structures are drawn from the Vermont Online Bridge & Culvert Inventory Tool (VOBCIT) database. All other data from the Vermont Center for Geographic Information. Only named streams are shown.