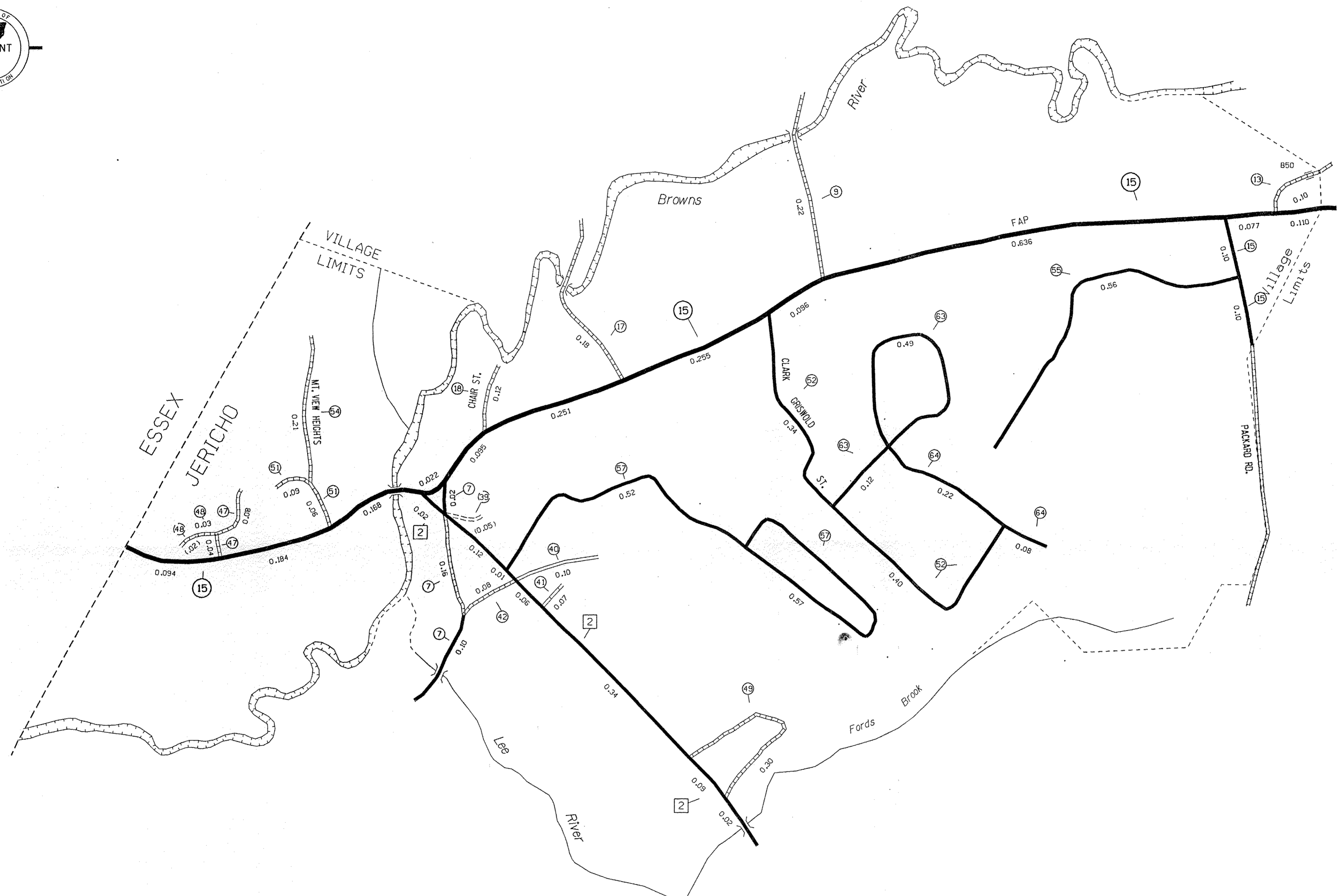


TOWN HWY NO.	LENGTH IN MILES	CLASS
7	0.280	3
9	0.220	3
13	0.100	3
15	0.200	3
17	0.180	3
18	0.120	3
39	(0.050)	4
40	0.100	4
41	0.070	4
42	0.080	4
47	0.120	4
48	0.030	4
49	0.300	4
51	0.150	4
52	0.740	4
54	0.210	4
55	0.560	4
57	1.090	4
63	0.610	4
64	0.300	4
TOTAL	5.460	0.070



HIGHWAYS

- INTERSTATE
- STATE HIGHWAY SYSTEM
- TOWN HIGHWAY SYSTEM
- IMPASSABLE OR UNTRAVELLED
- DISCONTINUED
- LEGAL TRAIL
- FOOT TRAIL
- 89 INTERSTATE NUMBERED ROUTE
- 2 U.S. NUMBERED ROUTE
- 3 STATE NUMBERED ROUTE
- 7 INTERCHANGE NUMBER
- 4 CLASS 1 TOWN HIGHWAY
- 2 CLASS 2 TOWN HIGHWAY
- 2 CLASS 3 TOWN HIGHWAY
- 6 CLASS 4 TOWN HIGHWAY
- FAP FEDERAL AID PRIMARY HIGHWAY SYSTEM
- FAS FEDERAL AID SECONDARY HIGHWAY SYSTEM
- FCA FULLY CONTROLLED ACCESS
- NFR NATIONAL FOREST ROAD
- SFH STATE FOREST HIGHWAY

BRIDGE OR CULVERT LESS THAN 6' SPAN
 BRIDGE OR CULVERT 6' TO 20' SPAN
 BRIDGE GREATER THAN 20' SPAN
 COVERED BRIDGE

ROAD SURFACE TYPES

- STATE SURFACED
- OTHER SURFACED
- STATE GRAVEL
- OTHER GRAVEL
- SOIL SURFACED
- GRADED AND DRAINED
- UNIMPROVED
- PRIMITIVE

POLITICAL SUBDIVISIONS

- STATE BOUNDARY
- COUNTY BOUNDARY
- TOWN BOUNDARY
- CITY BOUNDARY
- VILLAGE BOUNDARY
- URBAN COMPACT BOUNDARY

MISCELLANEOUS

- DAM

NATURAL FEATURES

- SINGLE LINE STREAM
- OPEN WATER
- SWAMP

OTHER TRANSPORTATION

- RAILROAD
- AIRPORT TERMINAL

MILEAGE SUMMARY

CLASS 1 TOWN HIGHWAYS:		
TOTAL, CLASS 1 TOWN HWYS.	0.000	
CLASS 2 TOWN HIGHWAYS:		
NO. 2	0.660	
TOTAL, CLASS 2 TOWN HWYS.	0.660	
CLASS 3 TOWN HIGHWAYS:		
TOTAL, CLASS 3 TOWN HWYS.	5.460	
TOTAL, TOWN HWYS.	6.120	
STATE HIGHWAYS:		
TOTAL, INTERSTATE HWYS.	0.000	
STATE HWY. 15	1.988	
TOTAL, NON-INTERSTATE HWYS.	1.988	
TOTAL, STATE HWYS.	1.988	
TOTAL, TRAVELLED HWYS., FEB. 10, 1993 (EXCLUDES CLASS 4 MILEAGE)	8.108	

GENERAL HIGHWAY MAP
VILLAGE OF JERICHO

PREPARED BY THE
 VERMONT AGENCY OF TRANSPORTATION
 PLANNING DIVISION

