

TOWN HWY. NO.	LENGTH IN MILES CLASS 3	CLASS 4
8	1.900	
9	3.270	
10	0.300	
11	1.250	
12	0.480	
13	1.550	
15	2.450	
16	0.520	(0.260)
17	0.860	
18	0.120	
19	2.300	
20	0.020	
21	0.460	(0.190)
22	0.700	
23	0.590	(0.260)
24	0.080	
25	0.930	(0.180)
26	0.700	(0.950)
27	0.360	
28	1.360	
29	0.900	
30	0.050	
31	0.750	
* 31		(0.410)
32	0.250	
33	1.650	
34	1.000	
35	1.870	
36	0.100	
37		(0.150)
39		(0.050)
40	0.100	
41	0.050	
42	0.080	
43	0.040	
44	0.060	
45	0.150	
47	0.120	
48	0.030	
* 48		(0.020)
49	0.300	
50	0.180	
TOTAL	40.750	2.920

* This portion of town highway is Class 3, but is functionally Class 4

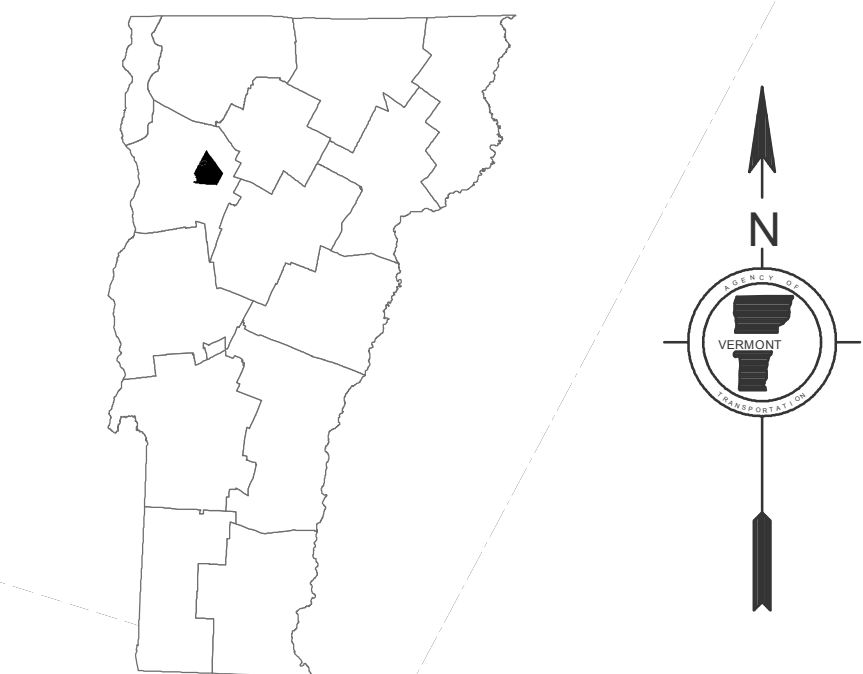
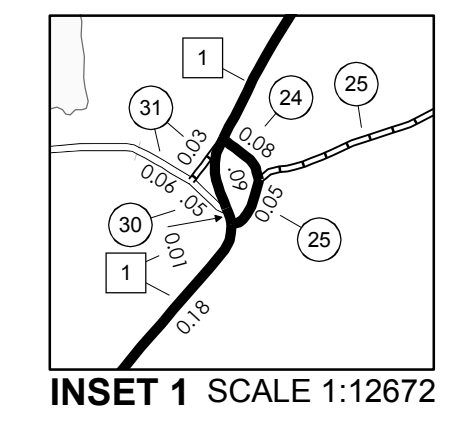
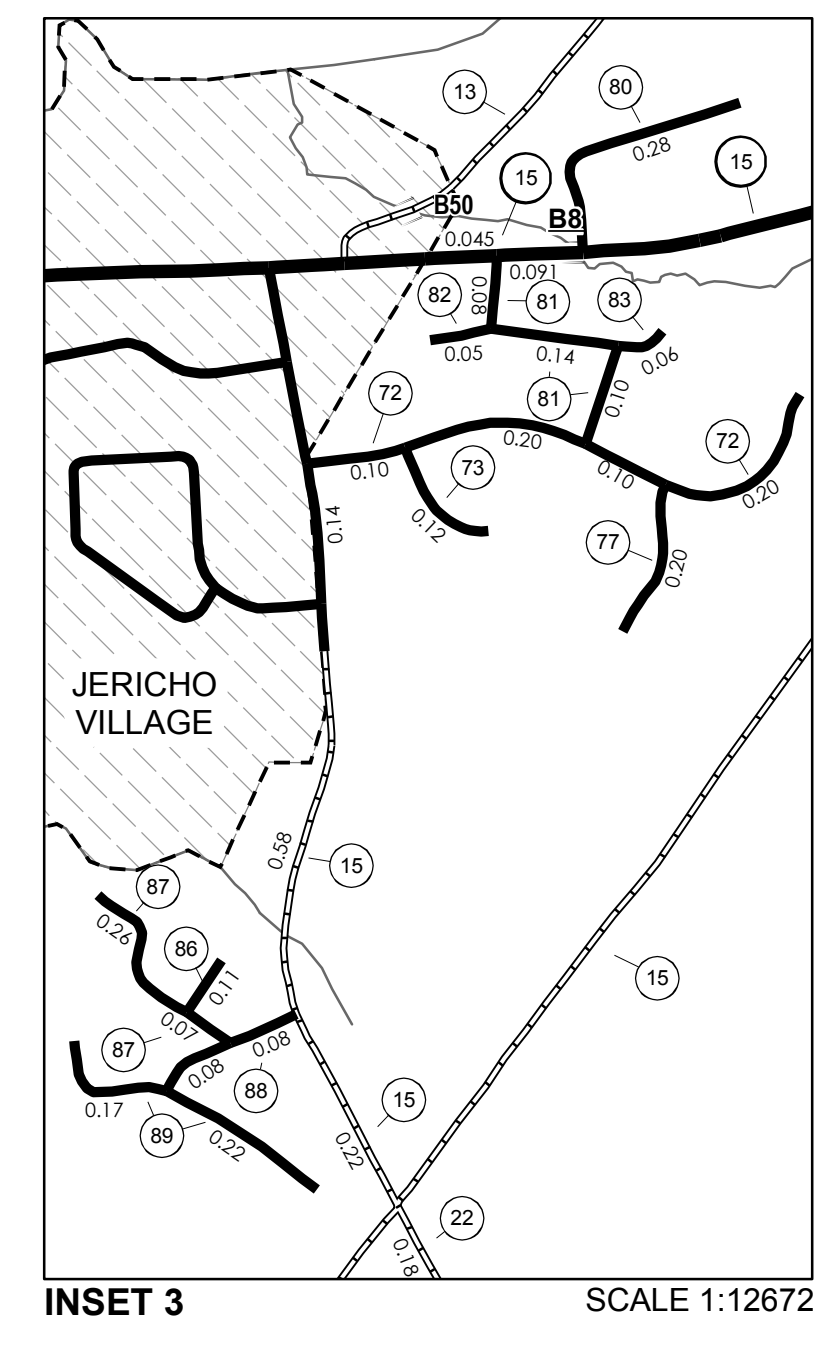
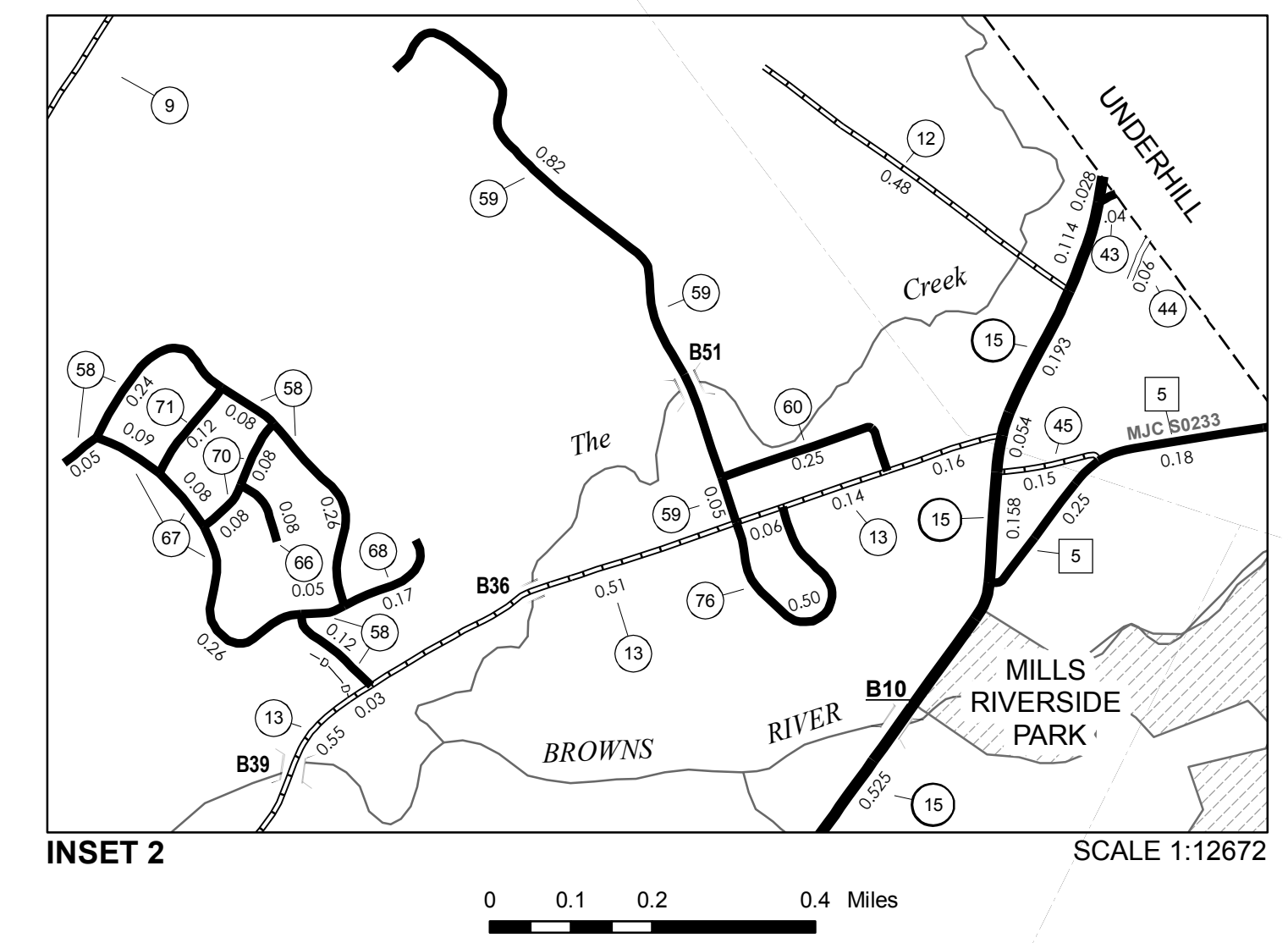
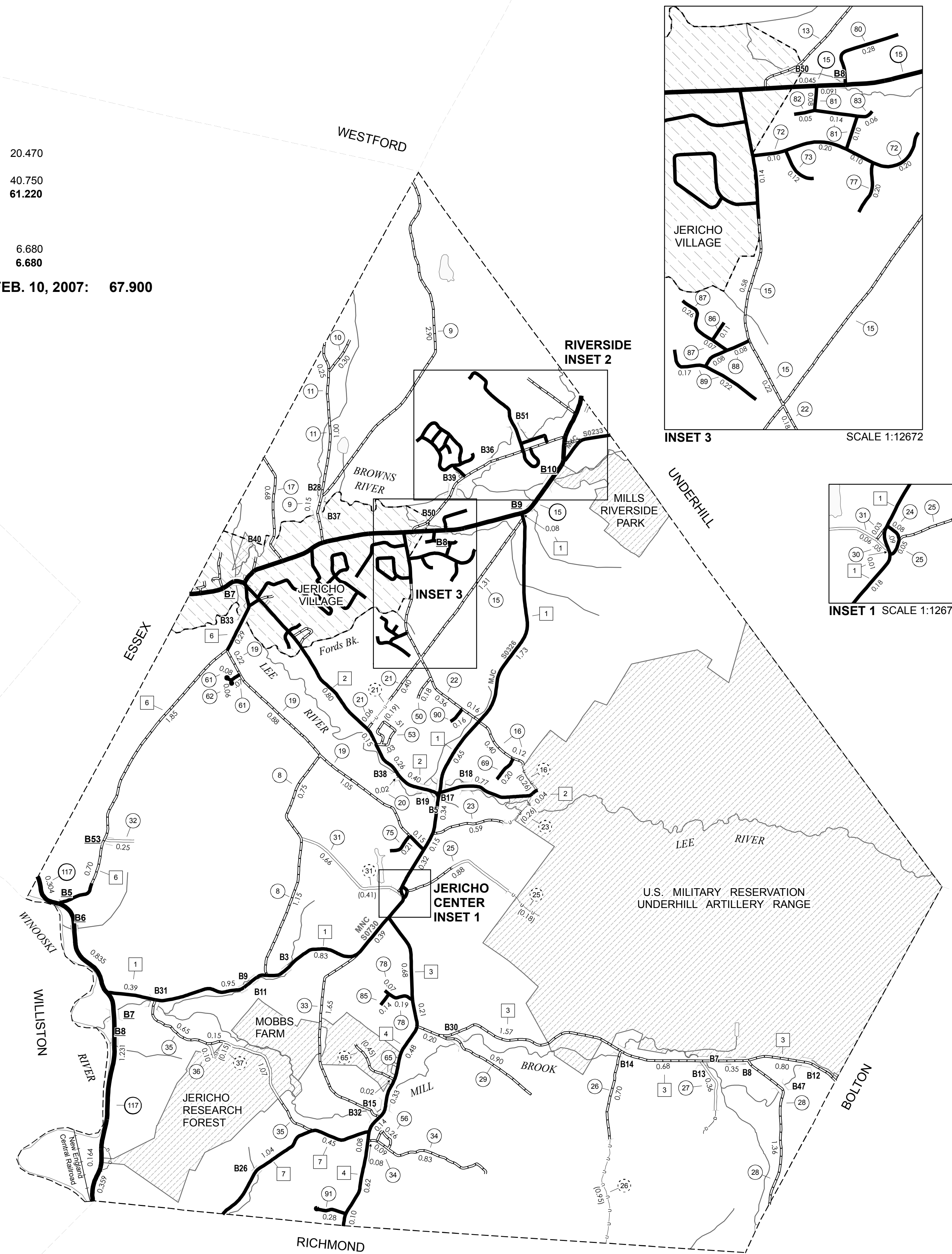
MILEAGE SUMMARY

CLASS 2		
TH-1	6.110	
TH-2	3.080	
TH-3	4.490	
TH-4	1.750	
TH-5	0.430	
TH-6	3.120	
TH-7	1.490	
TOTAL CLASS 2	20.470	
CLASS 3		
TOTAL CLASS 3	40.750	
TOTAL TOWN	61.220	
STATE HIGHWAY		
VT-15	3.787	
VT-117	2.893	
TOTAL STATE HIGHWAY	6.680	
TOTAL STATE	6.680	
TOTAL, TRAVELED HIGHWAYS, FEB. 10, 2007:	67.900	
(Excludes Class 4 and Legal Trail Mileage)		

- HIGHWAYS**
- INTERSTATE
 - U.S. ROUTE
 - STATE ROUTE
 - CLASS 1
 - CLASS 2
 - CLASS 3
 - CLASS 4
 - LEGAL TRAIL
 - INTERSTATE OR DIVIDED HIGHWAY
 - STATE - HARD SURFACE OR PAVED
 - TOWN - HARD SURFACE OR PAVED
 - GRAVEL
 - SOIL OR GRADED AND DRAINED EARTH
 - UNIMPROVED OR PRIMITIVE
 - IMPASSABLE OR UNTRAVELED
 - LEGAL TRAIL
 - DISCONTINUED
 - HIGHWAY CLASS CHANGE
 - RAILROAD
- POLITICAL SUBDIVISIONS**
- STATE BOUNDARY
 - COUNTY BOUNDARY
 - TOWN BOUNDARY
 - VILLAGE BOUNDARY
 - URBAN COMPACT BOUNDARY
- WATER BODIES**
- OPEN WATER
 - SWAMP
 - STREAM OR BROOK
- BRIDGE OR CULVERT**
- BRIDGE OR CULVERT GREATER THAN 20'
 - BRIDGE OR CULVERT 6' - 20'
- FEDERAL CLASSIFICATION IDENTIFIER**
- FAU URBAN ARTERIAL OR COLLECTOR
 - MA MINOR ARTERIAL
 - MJC MAJOR COLLECTOR
 - MNC MINOR COLLECTOR
 - PA PRINCIPAL ARTERIAL
- PUBLIC LAND**
- STATE BOUNDARY
 - COUNTY BOUNDARY
 - TOWN BOUNDARY
 - VILLAGE BOUNDARY
 - URBAN COMPACT BOUNDARY

DISCLAIMER:
 The untraveled highways (laid-out town highways), discontinued highways, and legal trails shown hereon are those of which the Agency of Transportation has record; others may exist.
 Highway and bridge data by the Agency of Transportation, Policy & Planning Division. All other data from the Vermont Center for Geographic Information.

Vermont State Plane Coordinate System
 North American Datum of 1983
 SPCS_Zone_Identifier: 4400
 Geodetic Reference System 80
 4,000-meter grid, Easting - Northing



VERMONT
GENERAL HIGHWAY MAP
Town of Jericho
 CHITTENDEN COUNTY
 Transportation District #5
 Prepared by the
 Vermont Agency of Transportation
 Policy & Planning Division
 in cooperation with
 U.S. Department of Transportation
 Federal Highway Administration
 Mileage as of: Feb. 10, 2007
 Map generated: October, 2007

