

1998
Mileage
Changes
©

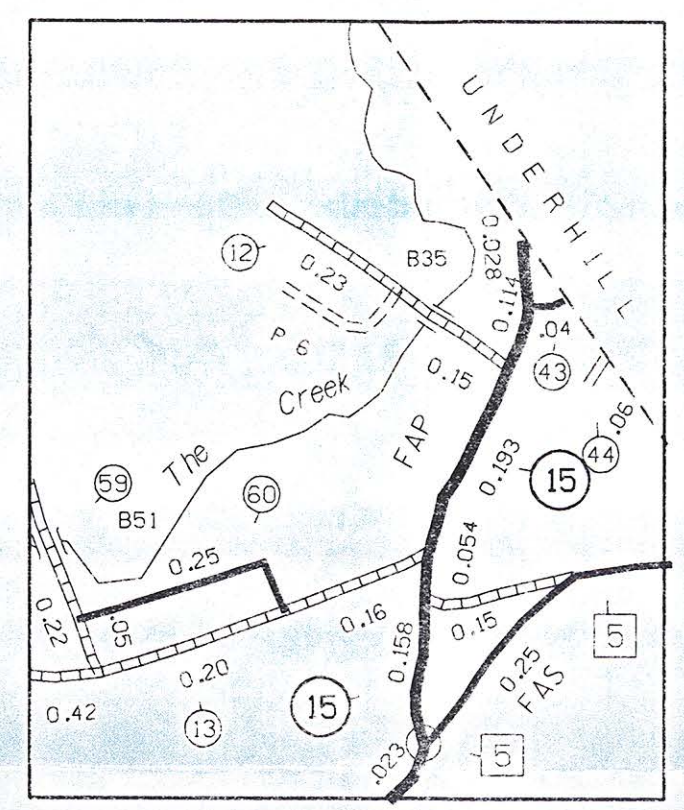
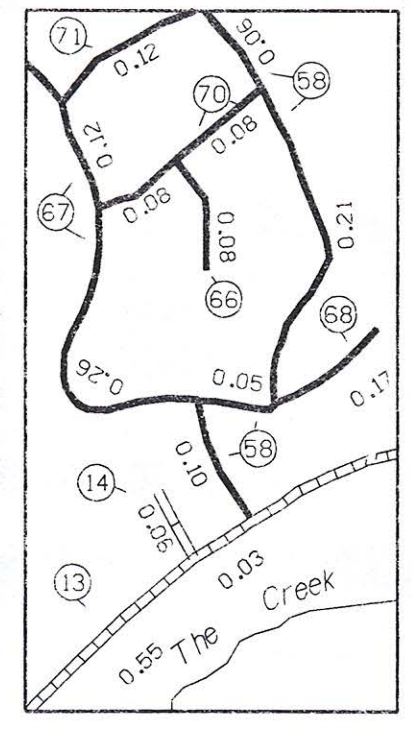
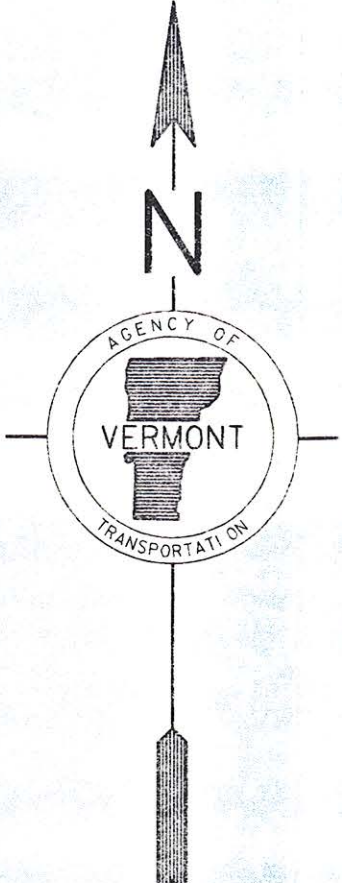
E340,000 E360,000 E380,000 E400,000 E420,000

TOWN HWY NO.	LENGTH IN MILES CLASS 3	LENGTH IN MILES CLASS 4
7	3.120	
8	1.900	
9	3.270	
10	0.300	
11	1.250	
12	0.380	
13	1.550	
14	0.060	
15	2.450	
16	0.520	(0.260)
17	0.860	
18	0.120	
19	2.300	
20	0.020	
21	0.460	(0.190)
22	0.700	
23	0.590	(0.260)
24	0.080	
25	0.930	(0.180)
26	0.820	(0.830)
27	0.550	
28	1.360	
29	0.900	
30	0.050	
31	0.750	(0.410)
32	0.250	
33	1.650	
34	1.000	
35	2.320	
36	0.100	
37		(0.150)
38	1.040	
39		(0.050)
40	0.100	
41	0.070	
42	0.080	
43	0.040	
44	0.060	
45	0.150	
46	0.130	(0.100)
47	0.120	
48	0.030	(0.020)
49	0.300	
50	0.180	
51	0.150	
52	0.740	
53	0.540	
54	0.210	
55	0.560	
56	0.260	
57	1.090	
58	0.930	
59	0.270	
60	0.250	
61	0.150	
62	0.060	
63	0.610	
64	0.300	
65	0.470	
66	0.080	
67	0.500	
68	0.170	
69	0.200	
70	0.160	
71	0.120	
72	0.300	
73	0.120	
75	0.210	
TOTAL	33.310	3.210
TOTAL	36.520	2.450

* PORTION(S) OF THESE TOWN HIGHWAYS ARE CLASS 3, BUT ARE FUNCTIONALLY CLASS 4. "

MILEAGE SUMMARY

CLASS 1 TOWN HIGHWAYS:			
TOTAL, CLASS 1 TOWN HWYS.		0.000	
CLASS 2 TOWN HIGHWAYS:			
NO. 1	6.110		
NO. 2	3.080		
NO. 3	4.490		
NO. 4	1.750		
NO. 5	0.430		
TOTAL, CLASS 2 TOWN HWYS.	15.860		
CLASS 3 TOWN HIGHWAYS:			
TOTAL, CLASS 3 TOWN HWYS.	43.690	59.550	
TOTAL, TOWN HWYS.	59.550	62.000	
STATE HIGHWAYS:			
TOTAL, INTERSTATE HWYS.		0.000	
STATE HWY. 15	3.787		
STATE HWY. 117	2.893		
TOTAL, NON-INTERSTATE HWYS.	6.680		
TOTAL, STATE HWYS.	6.680	6.680	
TOTAL, TRAVELLED HWYS., FEB. 10, 1986 (EXCLUDES CLASS 4 MILEAGE)	66.230	68.680	



INSET 3

RIVERSIDE INSET 1



HIGHWAYS

- INTERSTATE
- STATE HIGHWAY SYSTEM
- TOWN HIGHWAY SYSTEM
- IMPASSABLE OR UNTRAVELLED
- DISCONTINUED
- LEGAL TRAIL
- FOOT TRAIL

ROUTE MARKERS

- INTERSTATE NUMBERED ROUTE
- U.S. NUMBERED ROUTE
- STATE NUMBERED ROUTE
- INTERCHANGE NUMBER
- CLASS 1 TOWN HIGHWAY
- CLASS 2 TOWN HIGHWAY
- CLASS 3 TOWN HIGHWAY
- CLASS 4 TOWN HIGHWAY

POLITICAL SUBDIVISIONS

- STATE BOUNDARY
- COUNTY BOUNDARY
- TOWN BOUNDARY
- CITY BOUNDARY
- VILLAGE BOUNDARY
- URBAN COMPACT BOUNDARY

MISCELLANEOUS

- DAM

NATURAL FEATURES

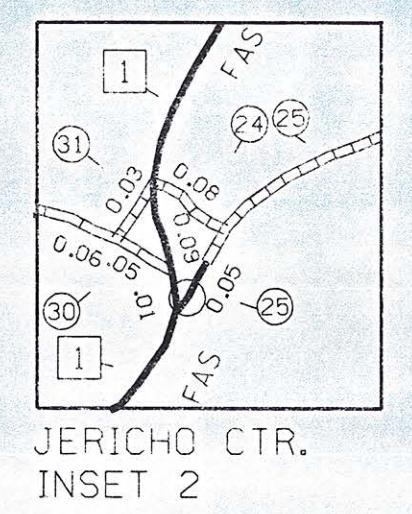
- SINGLE LINE STREAM
- OPEN WATER
- SWAMP

ROAD SURFACE TYPES

- STATE SURFACED
- OTHER SURFACED
- STATE GRAVEL
- OTHER GRAVEL
- SOIL SURFACED
- GRADED AND DRAINED
- UNIMPROVED
- PRIMITIVE

OTHER TRANSPORTATION

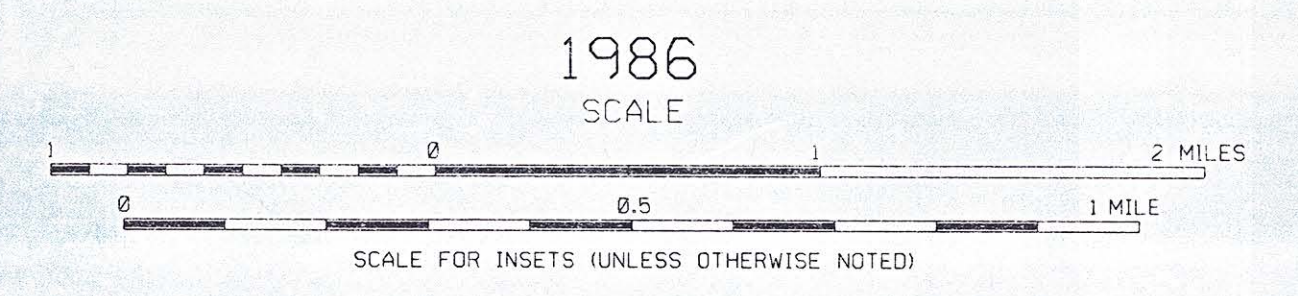
- RAILROAD
- AIRPORT TERMINAL



JERICHO CTR. INSET 2

VERMONT GENERAL HIGHWAY MAP TOWN OF JERICHO

PREPARED BY THE VERMONT AGENCY OF TRANSPORTATION PLANNING DIVISION IN COOPERATION WITH THE U.S. DEPARTMENT OF TRANSPORTATION FEDERAL HIGHWAY ADMINISTRATION



E340,000 E360,000 E380,000 E400,000 E420,000