

1997  
Mileage  
Change

E340,000

E360,000

E380,000

E400,000

E420,000

N740,000

N740,000

N720,000

N720,000

N700,000

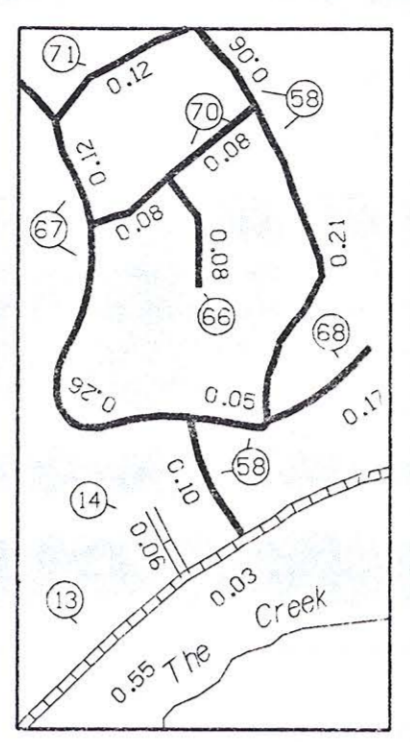
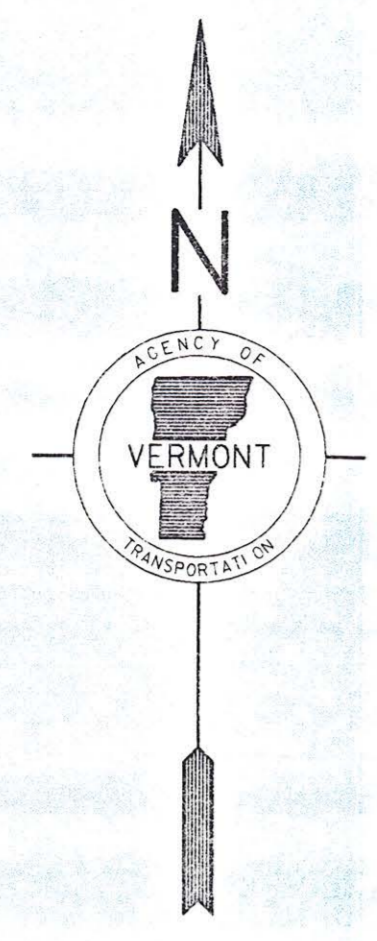
N700,000

TOWN HWY NO.	LENGTH IN MILES	CLASS
7	3.120	4
8	1.900	
9	3.270	
10	0.300	
11	1.250	
12	0.380	
13	1.550	
14	0.060	
15	2.450	
16	0.520	( 0.260 )
17	0.860	
18	0.120	
19	2.300	
20	0.020	
21	0.460	( 0.190 )
22	0.700	
23	0.590	( 0.260 )
24	0.080	
25	0.930	( 0.180 )
26	0.820	( 0.830 )
27	0.550	
28	1.360	
29	0.800	
30	0.050	
31	0.750	( 0.410 )
32	0.250	
33	1.850	
34	1.000	
35	2.320	
36	0.100	
37		( 0.150 )
38	1.040	( 0.050 )
39	0.100	
40	0.070	
41	0.080	
42	0.080	
43	0.040	
44	0.060	
45	0.150	
46	0.130	( 0.100 )
47	0.120	
48	0.030	( 0.020 )
49	0.300	
50	0.180	
51	0.150	
52	0.740	
53	0.540	
54	0.210	
55	0.560	
56	0.260	
57	1.050	
58	0.930	
59	0.220	0.87
60	0.250	
61	0.150	
62	0.060	
63	0.610	
64	0.300	
65	0.470	
66	0.080	
67	0.500	
68	0.170	
69	0.200	
70	0.160	
71	0.120	
72	0.300	
73	0.120	78 0.26
74	0.120	79 0.64
75	0.210	

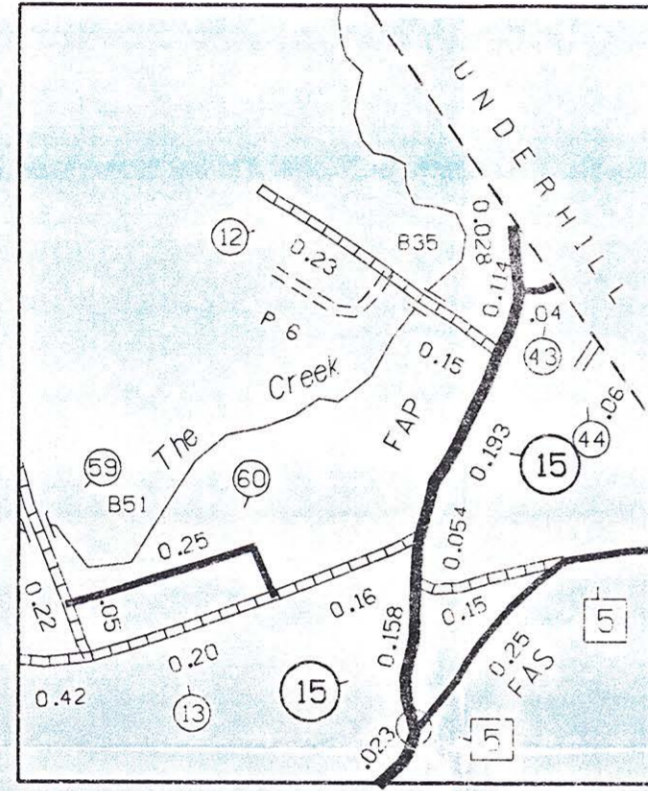
TOTAL 41.380 2.450  
 \* PORTION(S) OF THESE TOWN HIGHWAYS ARE CLASS 3, BUT ARE FUNCTIONALLY CLASS 4. "

MILEAGE SUMMARY

CLASS 1 TOWN HIGHWAYS:		
TOTAL, CLASS 1 TOWN HWYS.		0.000
CLASS 2 TOWN HIGHWAYS:		
NO. 1	6.110	
NO. 2	3.080	
NO. 3	4.490	
NO. 4	1.750	
NO. 5	0.430	
TOTAL, CLASS 2 TOWN HWYS.	15.860	
CLASS 3 TOWN HIGHWAYS:		
TOTAL, CLASS 3 TOWN HWYS.	42.920	59.890
TOTAL, TOWN HWYS.	41.380	57.220
STATE HIGHWAYS:		
TOTAL, INTERSTATE HWYS.	0.000	
STATE HWY. 15	3.787	
STATE HWY. 117	2.893	
TOTAL, NON-INTERSTATE HWYS.	6.680	
TOTAL, STATE HWYS.	6.680	6.680
TOTAL, TRAVELLED HWYS., FEB. 10, 1986	108.060	65.520
(EXCLUDES CLASS 4 MILEAGE)		68.800



INSET 3



RIVERSIDE INSET 1



**HIGHWAYS**

- INTERSTATE
- STATE HIGHWAY SYSTEM
- TOWN HIGHWAY SYSTEM
- IMPASSABLE OR UNTRAVELLED
- DISCONTINUED
- LEGAL TRAIL
- FOOT TRAIL
- INTERSTATE NUMBERED ROUTE
- U.S. NUMBERED ROUTE
- STATE NUMBERED ROUTE
- INTERCHANGE NUMBER
- CLASS 1 TOWN HIGHWAY
- CLASS 2 TOWN HIGHWAY
- CLASS 3 TOWN HIGHWAY
- CLASS 4 TOWN HIGHWAY
- FEDERAL AID PRIMARY HIGHWAY SYSTEM (FAP)
- FEDERAL AID SECONDARY HIGHWAY SYSTEM (FAS)
- FULLY CONTROLLED ACCESS (FCA)
- NATIONAL FOREST ROAD (NFR)
- STATE FOREST HIGHWAY (SFH)

**POLITICAL SUBDIVISIONS**

- STATE BOUNDARY
- COUNTY BOUNDARY
- TOWN BOUNDARY
- CITY BOUNDARY
- VILLAGE BOUNDARY
- URBAN COMPACT BOUNDARY

**MISCELLANEOUS**

- DAM

**NATURAL FEATURES**

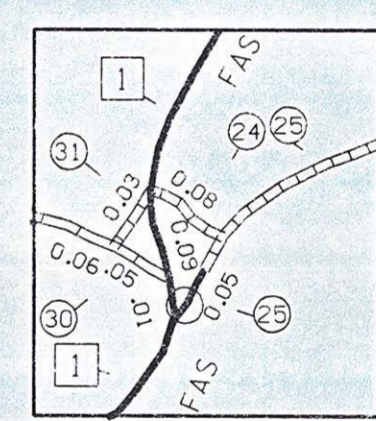
- SINGLE LINE STREAM
- OPEN WATER
- SWAMP

**ROAD SURFACE TYPES**

- STATE SURFACED
- OTHER SURFACED
- STATE GRAVEL
- OTHER GRAVEL
- SOIL SURFACED
- GRAZED AND DRAINED
- UNIMPROVED
- PRIMITIVE

**OTHER TRANSPORTATION**

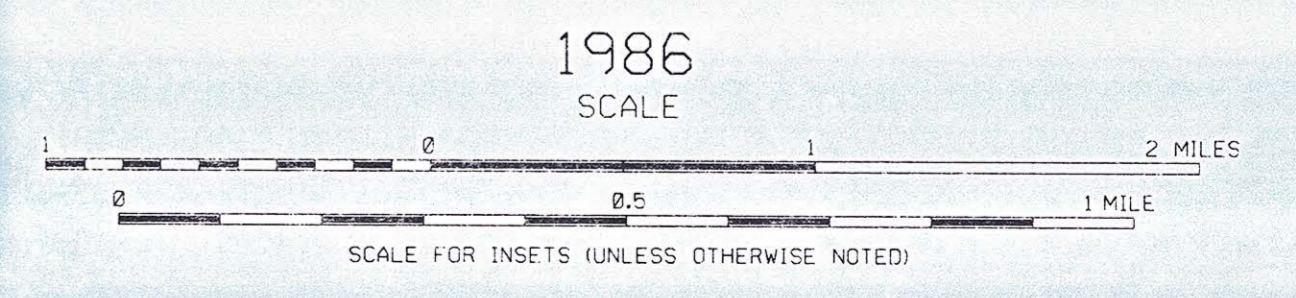
- RAILROAD
- AIRPORT TERMINAL



JERICHO CTR. INSET 2

VERMONT  
 GENERAL HIGHWAY MAP  
 TOWN OF JERICHO

PREPARED BY THE  
 VERMONT AGENCY OF TRANSPORTATION  
 PLANNING DIVISION  
 IN COOPERATION WITH THE  
 U.S. DEPARTMENT OF TRANSPORTATION  
 FEDERAL HIGHWAY ADMINISTRATION



E340,000

E360,000

E380,000

E400,000

E420,000