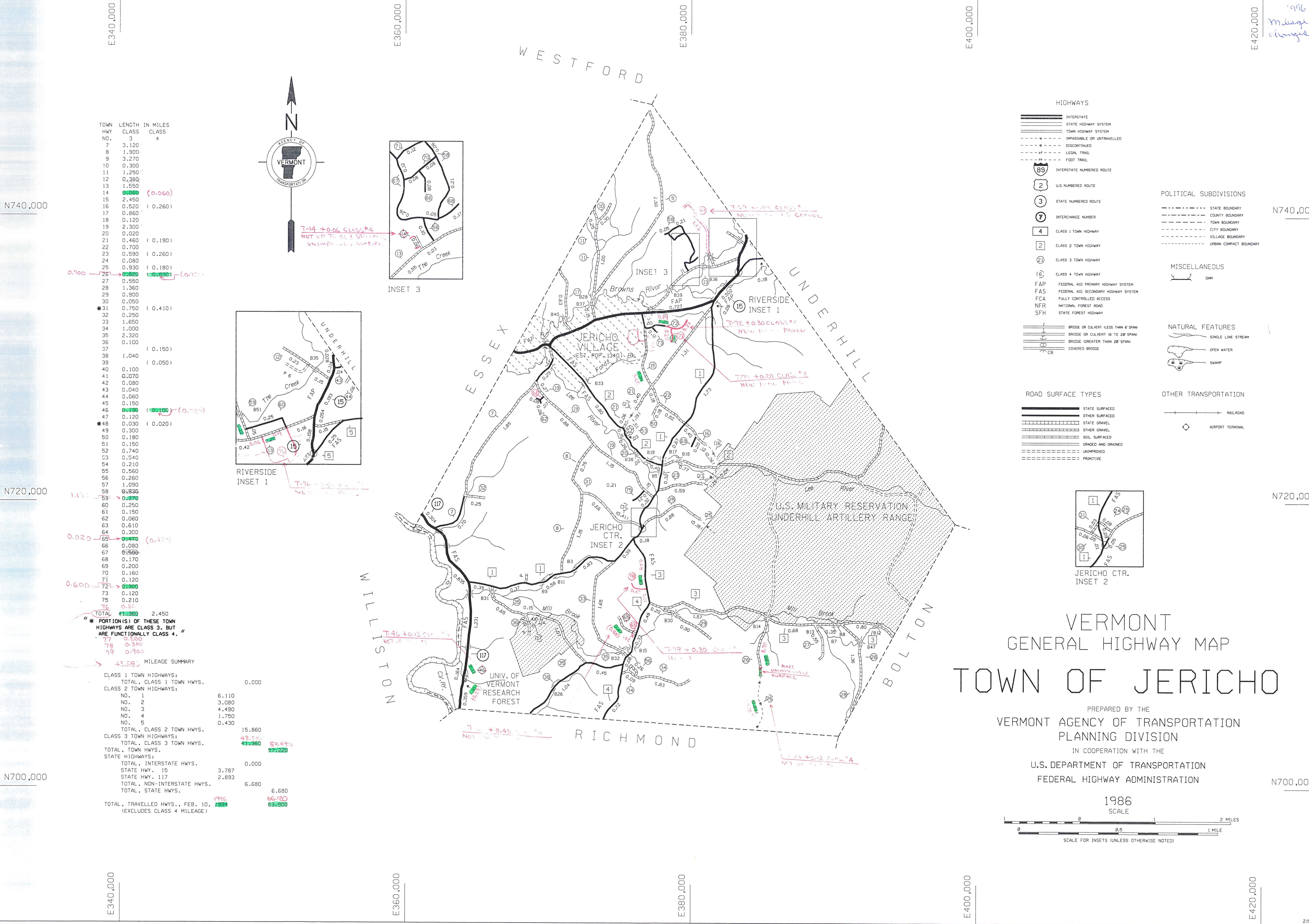


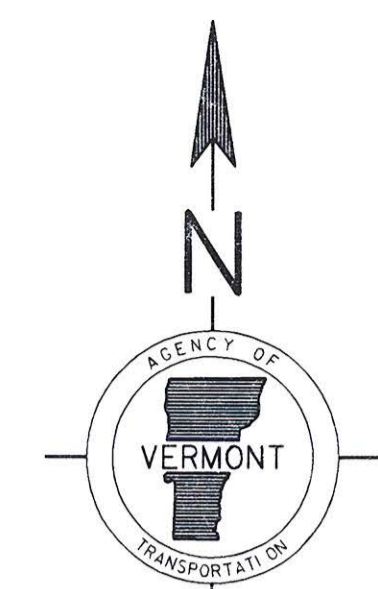
1996
Mileage
changed



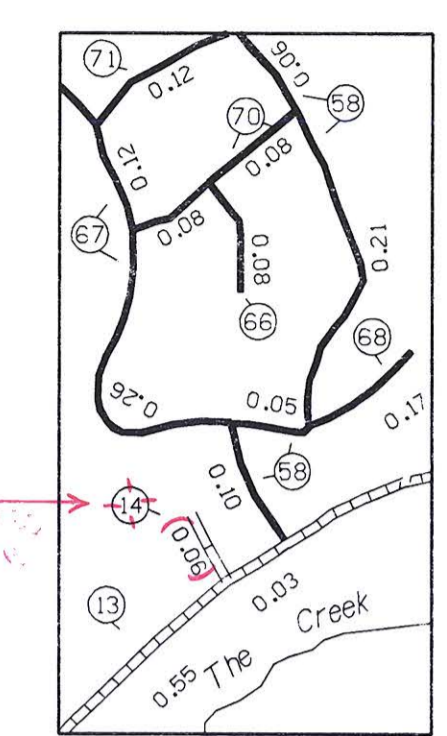
TOWN HWY NO.	LENGTH IN MILES	CLASS
7	3.120	
8	1.900	
9	3.270	
10	0.300	
11	1.250	
12	0.380	
13	1.550	
14	0.060	(0.060)
15	2.450	
16	0.520	(0.260)
17	0.860	
18	0.120	
19	2.300	
20	0.020	
21	0.460	(0.190)
22	0.700	
23	0.530	(0.260)
24	0.080	
25	0.930	(0.180)
26	0.700	(0.260)
27	0.550	
28	1.360	
29	0.900	
30	0.050	
31	0.750	(0.410)
32	0.250	
33	1.650	
34	1.000	
35	2.320	
36	0.100	
37		(0.150)
38	1.040	
39		(0.050)
40	0.100	
41	0.070	
42	0.080	
43	0.040	
44	0.060	
45	0.150	
46	0.130	(0.100) (0.20)
47	0.120	
48	0.030	(0.020)
49	0.300	
50	0.180	
51	0.150	
52	0.740	
53	0.540	
54	0.210	
55	0.560	
56	0.260	
57	1.090	
58	0.930	
59	0.270	(0.270)
60	0.250	
61	0.150	
62	0.060	
63	0.610	
64	0.300	
65	0.080	(0.45)
66	0.080	
67	0.590	
68	0.170	
69	0.200	
70	0.160	
71	0.120	
72	0.500	(0.600)
73	0.120	
75	0.210	
76	0.50	
TOTAL	41.380	2.450

* PORTION(S) OF THESE TOWN HIGHWAYS ARE CLASS 3, BUT ARE FUNCTIONALLY CLASS 4. "

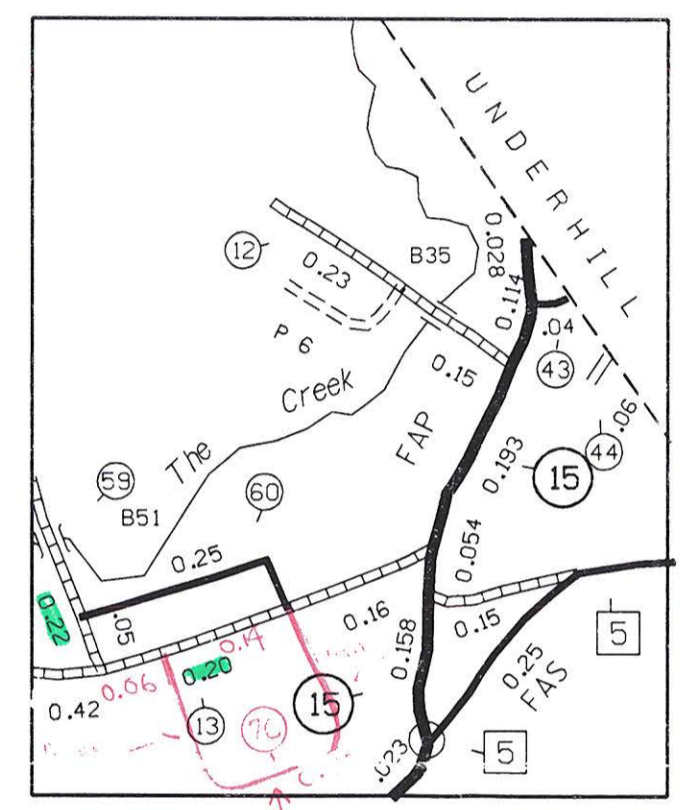
MILEAGE SUMMARY		
CLASS 1 TOWN HIGHWAYS:		
TOTAL, CLASS 1 TOWN HWYS.		0.000
CLASS 2 TOWN HIGHWAYS:		
NO. 1	6.110	
NO. 2	3.080	
NO. 3	4.490	
NO. 4	1.750	
NO. 5	0.430	
TOTAL, CLASS 2 TOWN HWYS.		15.860
CLASS 3 TOWN HIGHWAYS:		
TOTAL, CLASS 3 TOWN HWYS.	43.59	59.440
TOTAL, TOWN HWYS.		57.220
STATE HIGHWAYS:		
TOTAL, INTERSTATE HWYS.		0.000
STATE HWY. 15	3.787	
STATE HWY. 117	2.893	
TOTAL, NON-INTERSTATE HWYS.		6.680
TOTAL, STATE HWYS.		6.680
TOTAL, TRAVELLED HWYS., FEB. 10, 1996		66.120
(EXCLUDES CLASS 4 MILEAGE)		63.280



T-14 + 0.06 CLASS #4
NOT UP TO CL 3 SURFACE
UNIMPROVED SURFACE



INSET 3



RIVERSIDE INSET 1

T-46 + 0.12 CLASS #4
NOT UP TO CL 3 SURFACE

T-47 + 0.30 CLASS #4
NOT UP TO CL 3 SURFACE

T-48 + 0.12 CLASS #4
NOT UP TO CL 3 SURFACE

T-49 + 0.12 CLASS #4
NOT UP TO CL 3 SURFACE

T-50 + 0.12 CLASS #4
NOT UP TO CL 3 SURFACE

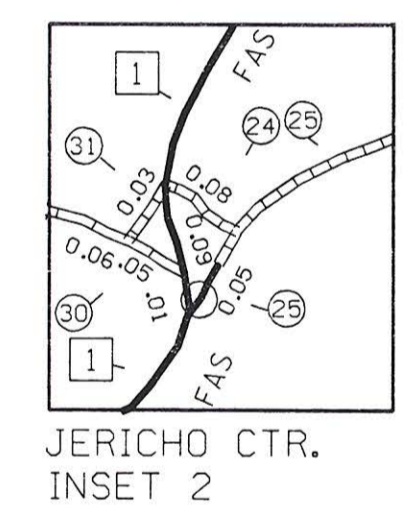
T-51 + 0.12 CLASS #4
NOT UP TO CL 3 SURFACE

T-52 + 0.12 CLASS #4
NOT UP TO CL 3 SURFACE

T-53 + 0.12 CLASS #4
NOT UP TO CL 3 SURFACE

T-54 + 0.12 CLASS #4
NOT UP TO CL 3 SURFACE

- HIGHWAYS**
- INTERSTATE
 - STATE HIGHWAY SYSTEM
 - TOWN HIGHWAY SYSTEM
 - IMPASSABLE OR UNTRAVELLED
 - DISCONTINUED
 - LEGAL TRAIL
 - FOOT TRAIL
 - INTERSTATE NUMBERED ROUTE
 - U.S. NUMBERED ROUTE
 - STATE NUMBERED ROUTE
 - INTERCHANGE NUMBER
 - CLASS 1 TOWN HIGHWAY
 - CLASS 2 TOWN HIGHWAY
 - CLASS 3 TOWN HIGHWAY
 - CLASS 4 TOWN HIGHWAY
 - FEDERAL AID PRIMARY HIGHWAY SYSTEM (FAP)
 - FEDERAL AID SECONDARY HIGHWAY SYSTEM (FAS)
 - FULLY CONTROLLED ACCESS (FCA)
 - NATIONAL FOREST ROAD (NFR)
 - STATE FOREST HIGHWAY (SFH)
- POLITICAL SUBDIVISIONS**
- STATE BOUNDARY
 - COUNTY BOUNDARY
 - TOWN BOUNDARY
 - CITY BOUNDARY
 - VILLAGE BOUNDARY
 - URBAN COMPACT BOUNDARY
- MISCELLANEOUS**
- DAM
- NATURAL FEATURES**
- SINGLE LINE STREAM
 - OPEN WATER
 - SWAMP
- ROAD SURFACE TYPES**
- STATE SURFACED
 - OTHER SURFACED
 - STATE GRAVEL
 - OTHER GRAVEL
 - SOIL SURFACED
 - GRADED AND DRAINED
 - UNIMPROVED
 - PRIMITIVE
- OTHER TRANSPORTATION**
- RAILROAD
 - AIRPORT TERMINAL

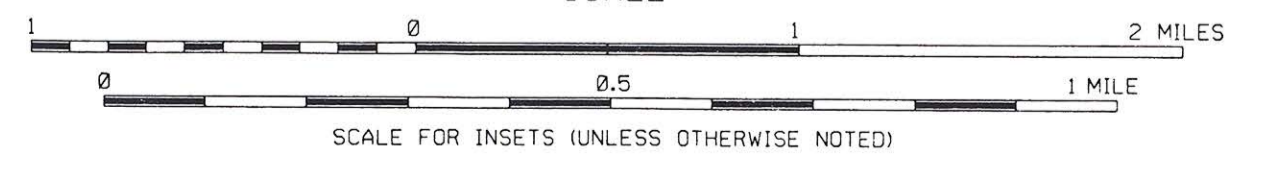


JERICHO CTR. INSET 2

VERMONT GENERAL HIGHWAY MAP TOWN OF JERICHO

PREPARED BY THE VERMONT AGENCY OF TRANSPORTATION PLANNING DIVISION IN COOPERATION WITH THE U.S. DEPARTMENT OF TRANSPORTATION FEDERAL HIGHWAY ADMINISTRATION

1986 SCALE



SCALE FOR INSETS (UNLESS OTHERWISE NOTED)