



MILEAGE SUMMARY

CLASS 2	6.600
TH-1	2.960
TH-2	3.460
TH-4	0.210
TH-5	0.750
TH-6	0.750
TH-7	2.030
TH-8	0.800
TH-9	2.180
TH-10	1.300
TH-11	0.140
TH-12	0.350
TH-13	0.090
TH-14	0.170
TOTAL CLASS 2	21.870
CLASS 3	71.49
TOTAL CLASS 3	71.49
TOTAL TOWN	93.360
STATE HIGHWAY	2.418
VT-2A	0.960
VT-15	1.361
VT-127	0.142
TOTAL STATE HIGHWAY	3.921
US HIGHWAY	2.196
US-2	0.960
US-7	1.236
TOTAL US HIGHWAY	9.156
TOTAL STATE	13.077
INTERSTATE	7.568
I-89	7.568
TOTAL INTERSTATE	7.568
INTERSTATE - Ramps	2.206
I-89	2.206
TOTAL INTERSTATE - Ramps	2.206
TOTAL INTERSTATE	9.774
TOTAL TRAVELED HIGHWAYS, FEB. 10, 2020:	116.211

(Excludes Class 4 and Legal Trail Mileage)

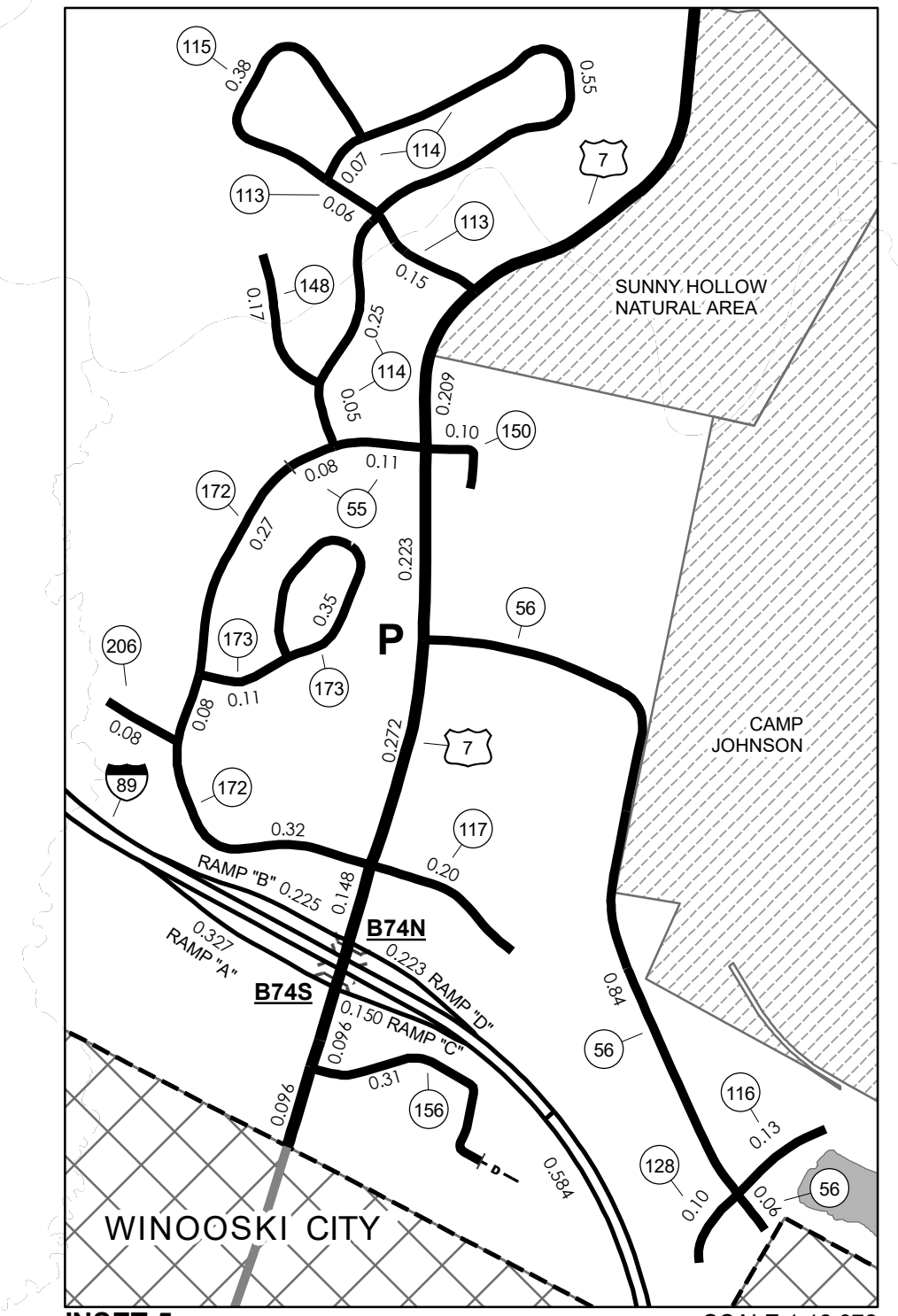
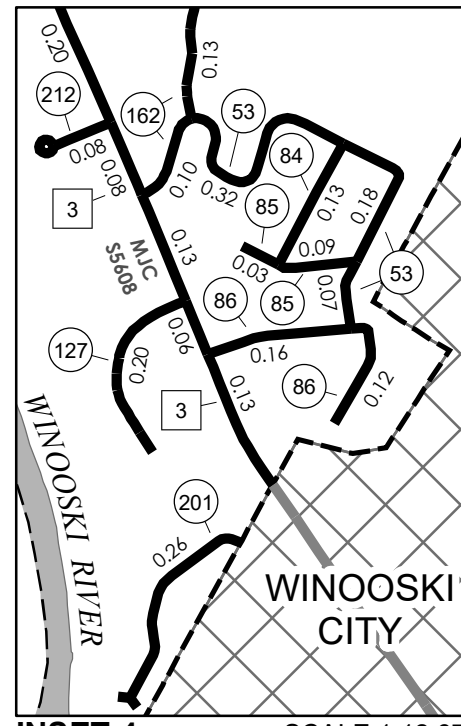
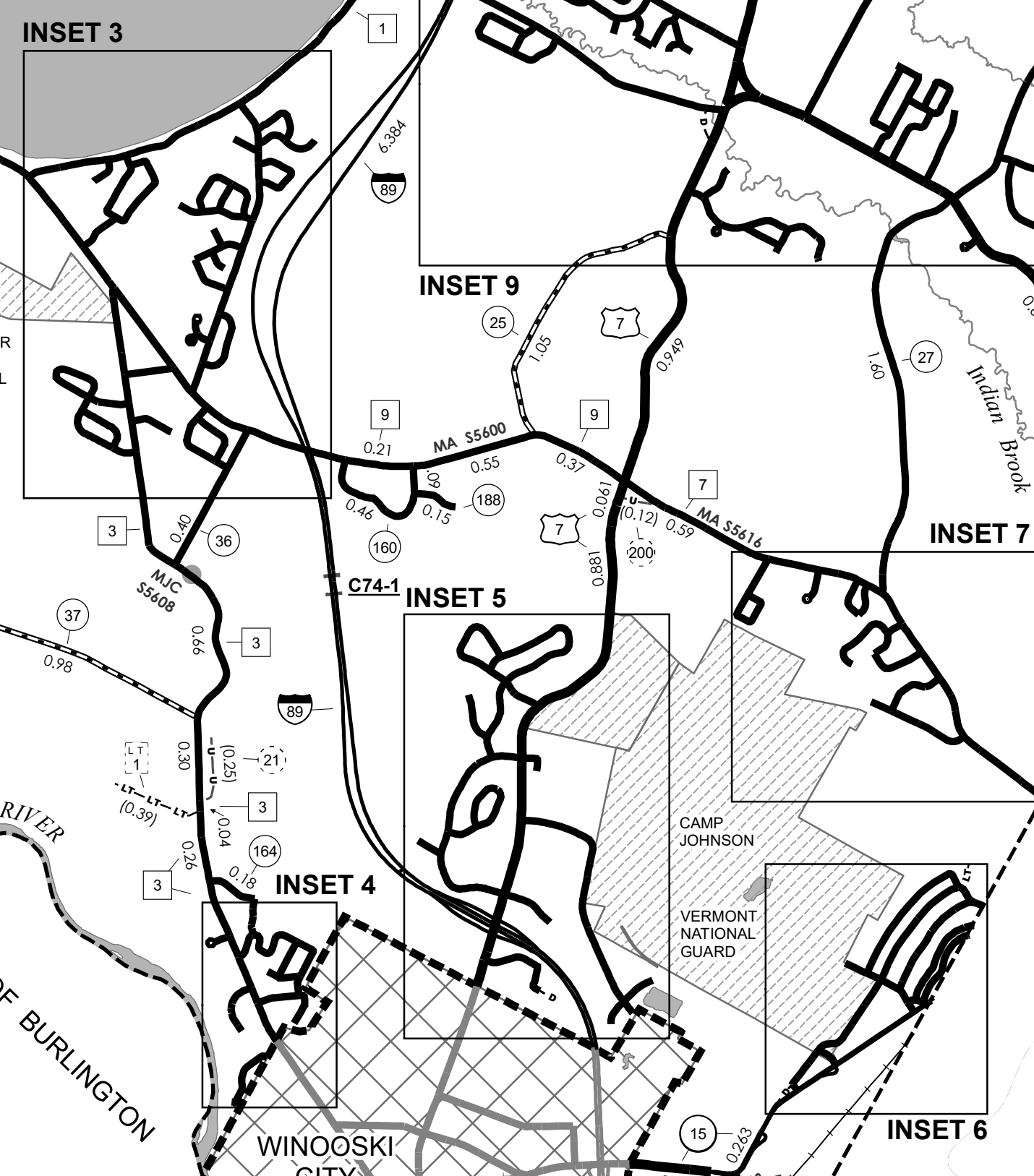
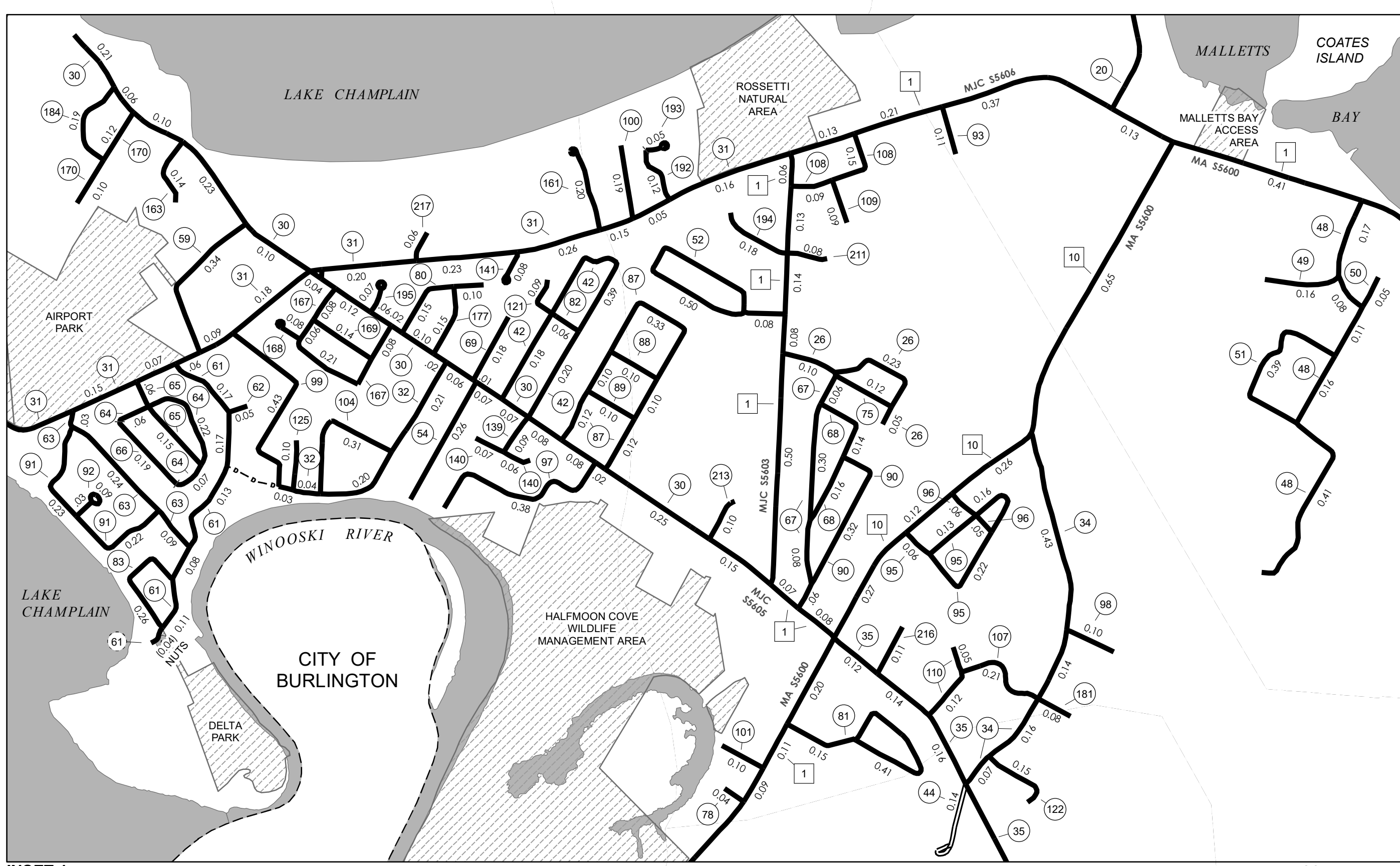
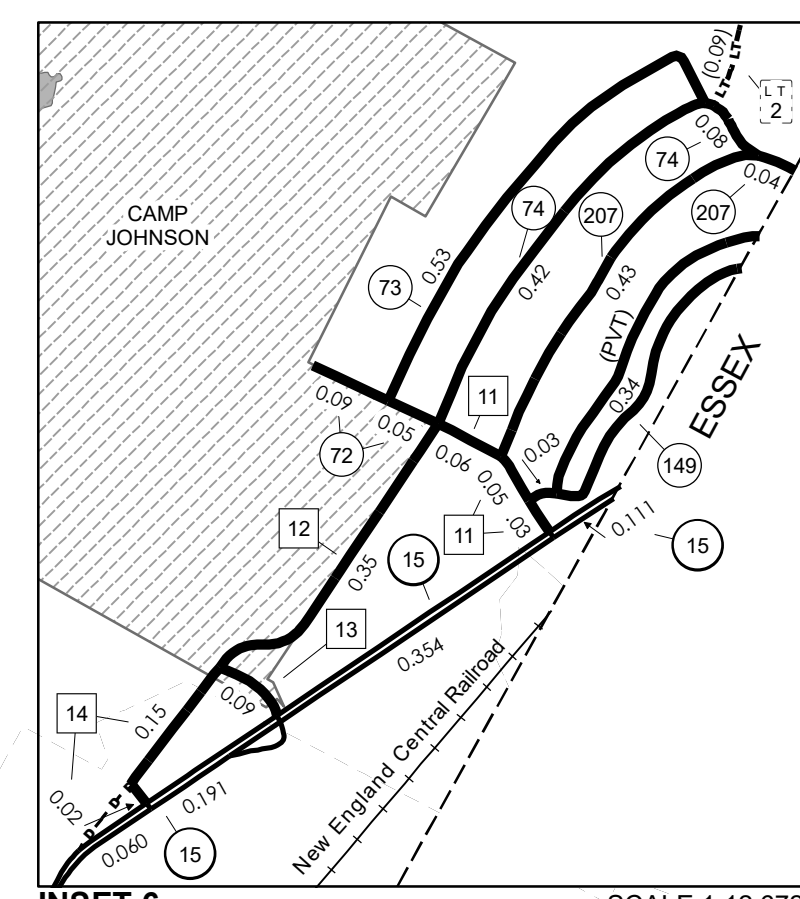
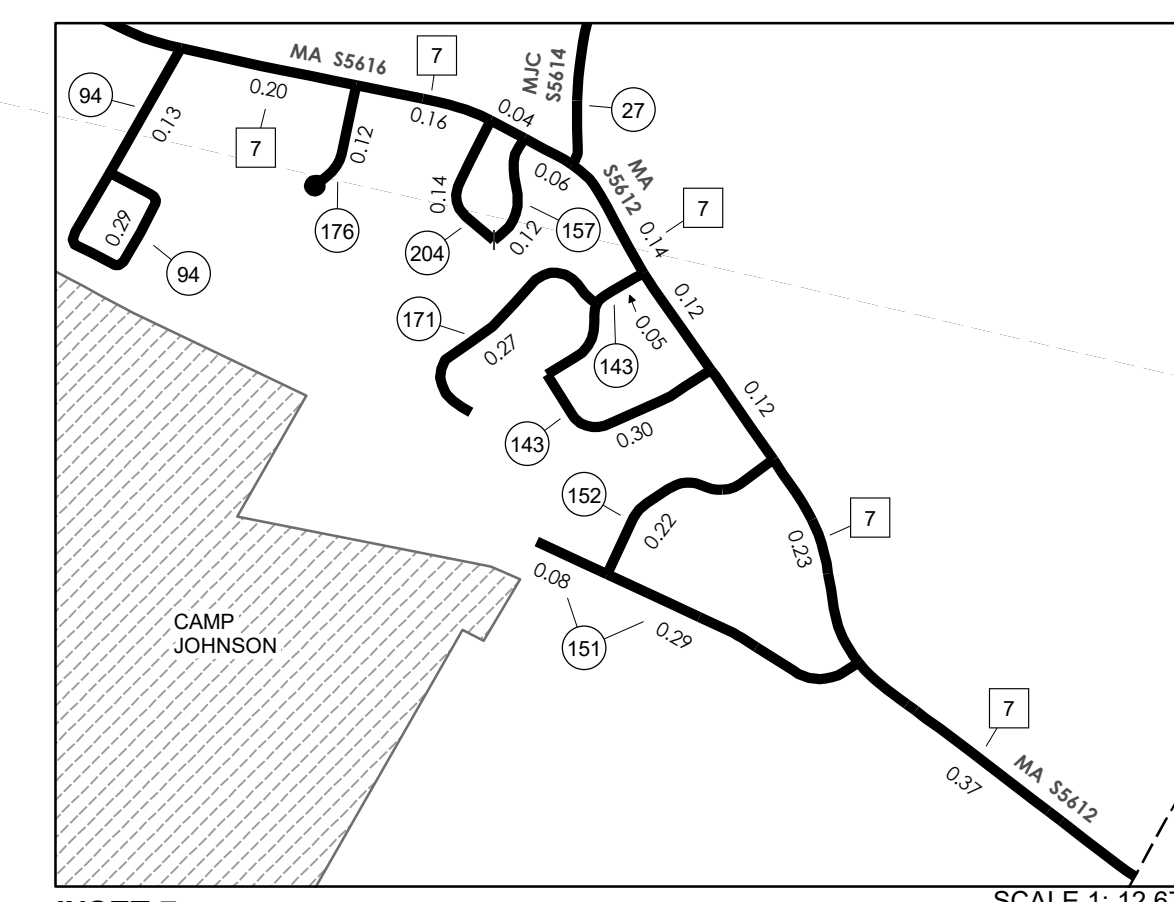
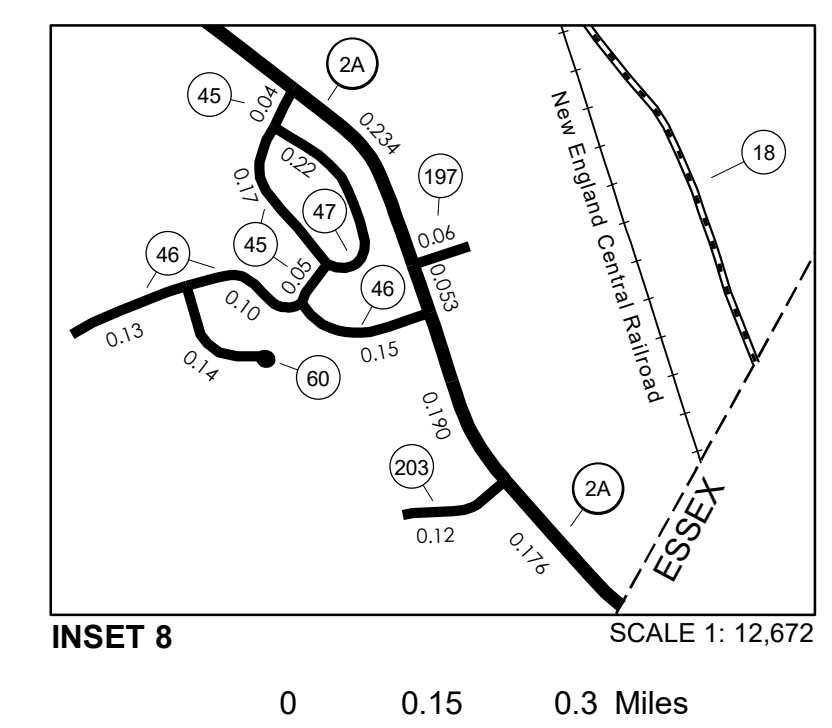
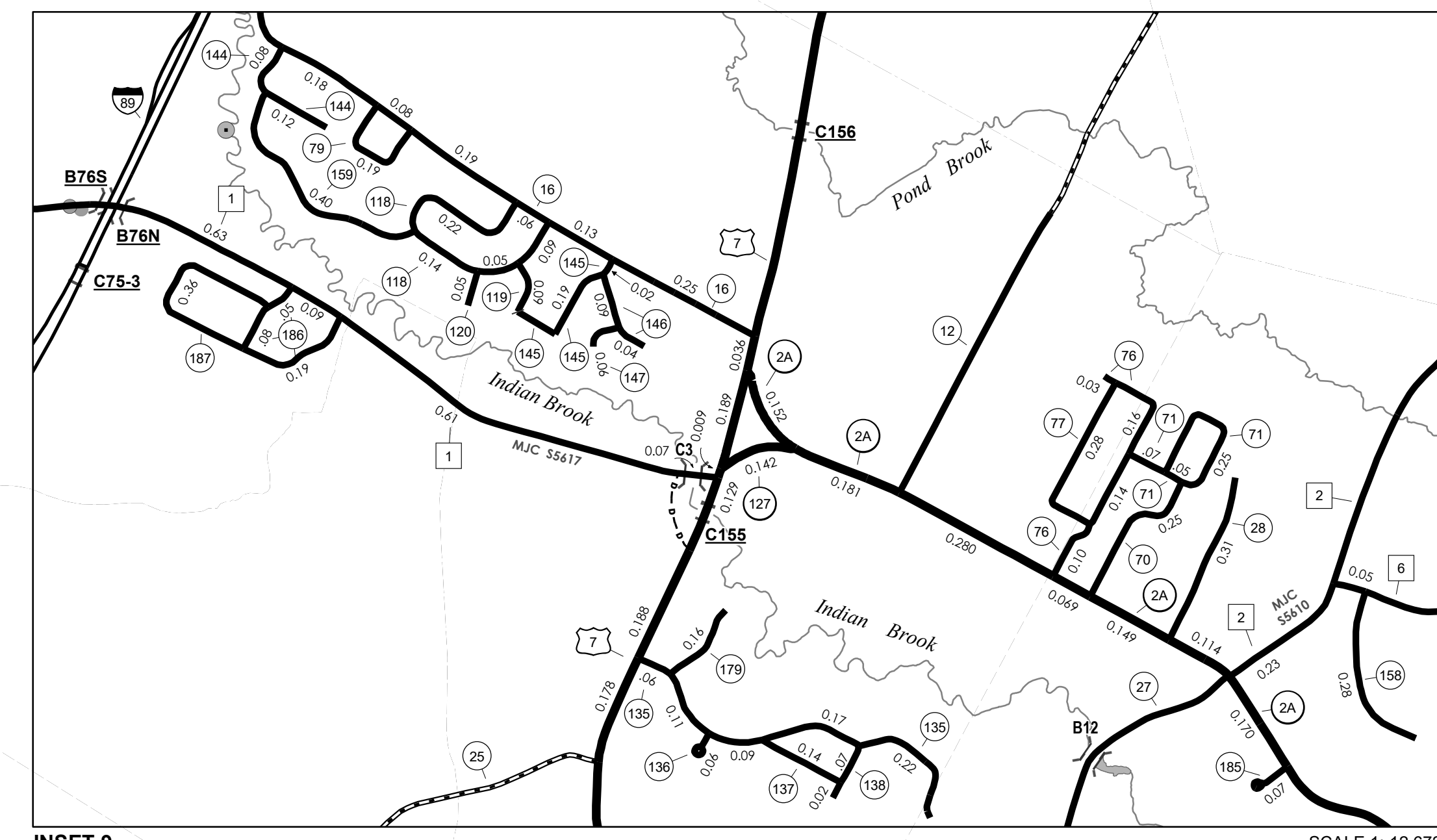
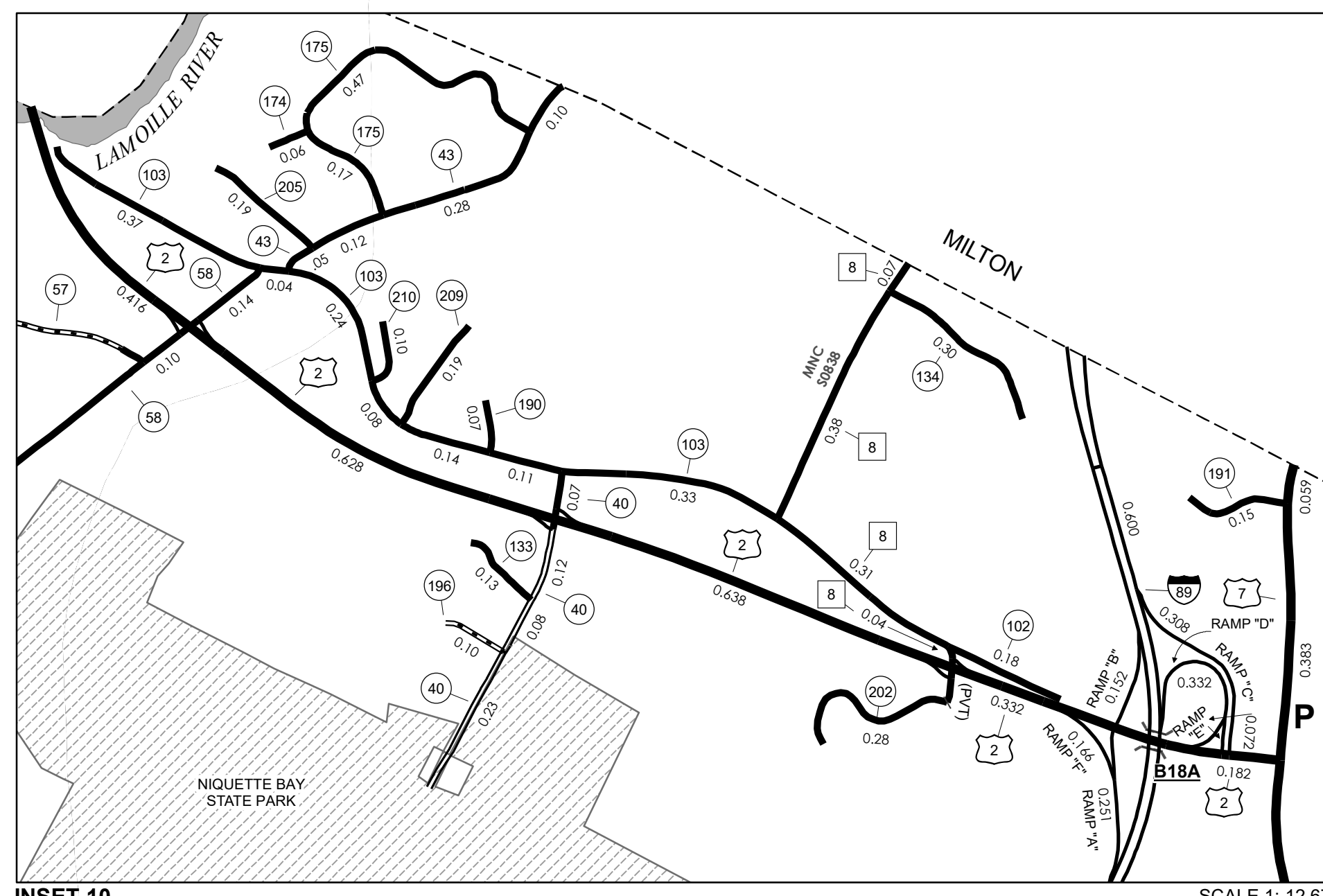
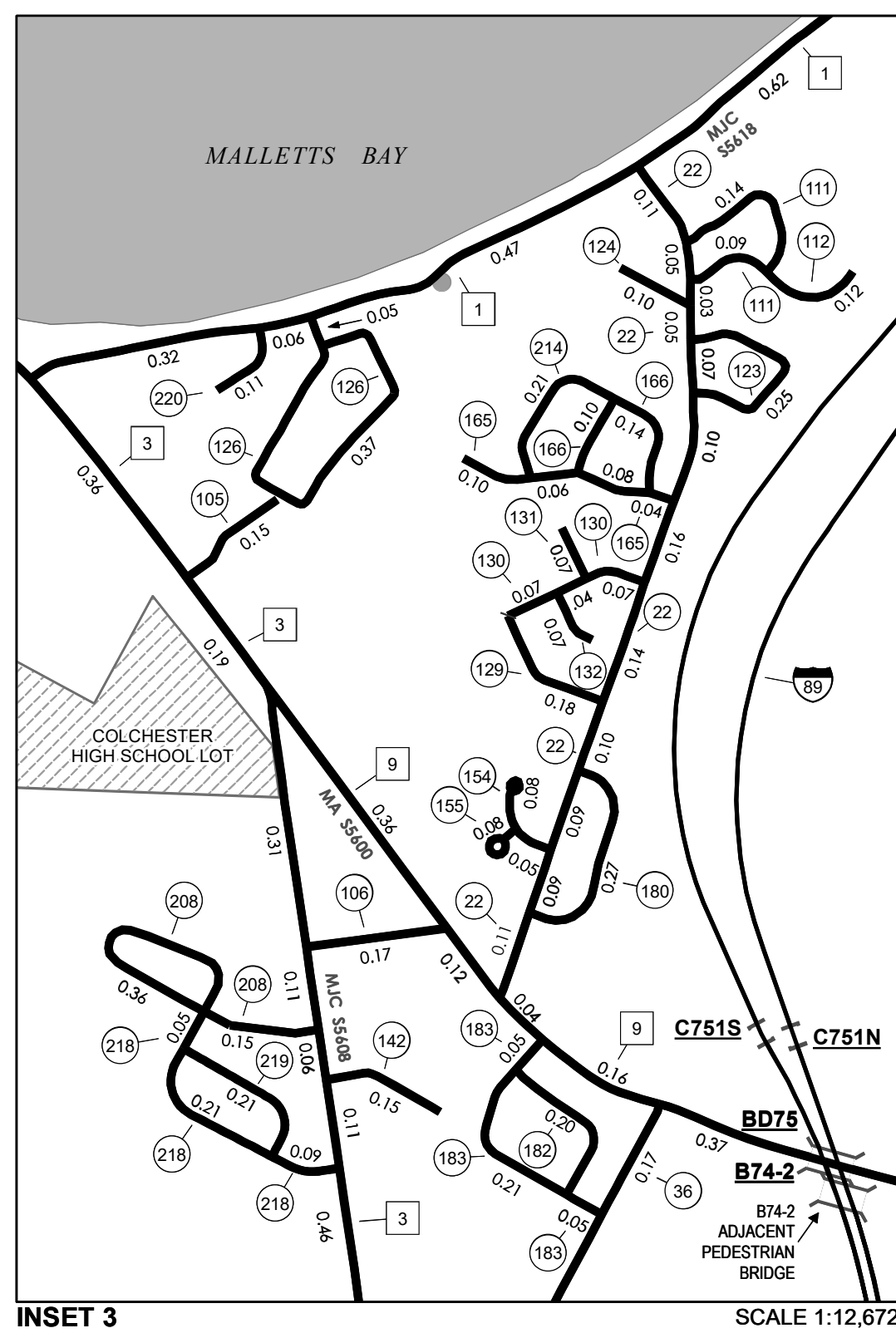
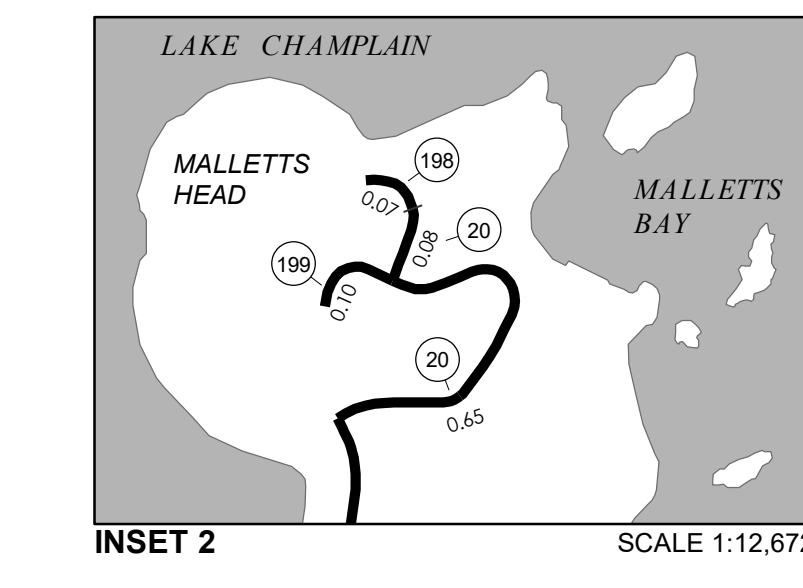
TOWN LENGTH IN MILES "NOT UP TO STANDARD"

18	(0.08)
61	(0.04)
TOTAL	0.12

**The sections of the town highways listed above are legally Class 3, but have been deemed "Not Up To Standard" and are functionally Class 4 Town Highways*

LEGAL TRAIL LENGTH IN MILES

1	(0.39)
2	(0.09)
3	(0.20)
TOTAL	0.68



- HIGHWAYS**
- INTERSTATE
 - U.S. ROUTE
 - STATE ROUTE
 - CLASS 1
 - CLASS 2
 - CLASS 3
 - CLASS 4
 - LEGAL TRAIL
- BRIDGE OR CULVERT**
- BRIDGE OR CULVERT > 20'
 - BRIDGE OR CULVERT 6' - 20'
 - BIKE PATH STRUCTURE
 - VT CULVERTS BRIDGE
 - VT CULVERTS CULVERT > 6'
 - B34 / C34 STATE BRIDGE OR CULVERT IDENTIFIER
 - B34 / C34 TOWN BRIDGE OR CULVERT IDENTIFIER
- NFR NATIONAL FOREST ROAD**
- SFR STATE FOREST HIGHWAY
 - P PARK AND RIDE
- FEDERAL CLASSIFICATION IDENTIFIER**
- MA MINOR ARTERIAL
 - MJC MAJOR COLLECTOR
 - MNC MINOR COLLECTOR
 - PA PRINCIPAL ARTERIAL

DISCLAIMER:
 The untraveled highways (laid-out town highways), discontinued highways, and legal trails herein are those of which the Agency of Transportation has record; others may exist.

Highway and bridge data by the Agency of Transportation.
 Town short structures drawn from the VT CULVERTS (formerly VOBCT) online database. All other data from the Vermont Open Geospatial Portal. Only named streams shown.

Vermont State Plane Coordinate System
 North American Datum of 1983
 SPCS Zone Identifier: 4000
 Geocentric Reference System 80
 4,000-meter grid, Easting - Northing

VERMONT GENERAL HIGHWAY MAP
Town of Colchester
 CHITTENDEN COUNTY
 Transportation District #5

Prepared by the
 Vermont Agency of Transportation
 Division of Policy, Planning and Intermodal Development
 in cooperation with
 U.S. Department of Transportation
 Federal Highway Administration

Mileage as of February 10, 2020
 Map prepared November 05, 2020
 SCALE 1:31,680