

TOWN HWY. No.	LENGTH IN MILES CLASS 3	TOWN HWY. No.	LENGTH IN MILES CLASS 4
9	0.65	116	0.13
10	1.03	117	0.20
11	0.60	118	0.50
12	3.35	119	0.09
13	0.80	120	0.05
14	0.35	121	0.09
15	0.40	122	0.15
16	1.31	123	0.25
17	0.90	124	0.10
18	0.83	125	0.10
19	0.11	126	0.42
20	1.37	127	0.20
21	(0.25)	128	0.10
22	1.10	129	0.18
25	1.05	130	0.18
26	0.38	131	0.07
27	1.60	132	0.07
28	0.31	133	0.13
30	1.85	134	0.30
31	2.59	135	0.65
32	0.48	136	0.06
34	0.80	137	0.14
35	1.08	138	0.09
36	0.57	139	0.09
37	0.98	140	0.13
40	0.50	141	0.08
41	0.35	142	0.15
42	0.77	143	0.35
43	0.55	144	0.20
44	0.14	145	0.21
45	0.26	146	0.13
46	0.38	147	0.06
47	0.22	148	0.17
48	0.93	149	0.37
49	0.16	150	0.10
50	0.35	151	0.37
51	0.39	152	0.22
52	0.58	153	0.50
53	0.57	154	0.13
54	0.26	155	0.08
55	0.19	156	0.31
56	0.90	157	0.12
57	1.40	158	0.28
58	1.42	159	0.40
59	0.54	160	0.55
60	0.14	161	0.20
61	0.98	162	0.23
62	0.05	163	0.14
63	0.36	164	0.18
64	0.35	165	0.28
65	0.21	166	0.24
66	0.19	167	0.43
67	0.44	168	0.08
68	0.30	169	0.14
69	0.18	170	0.22
70	0.25	171	0.27
71	0.37	172	0.67
72	0.14	173	0.46
73	0.53	174	0.06
74	0.50	175	0.64
75	0.12	176	0.12
76	0.43	177	0.15
77	0.28	178	0.22
78	0.04	179	0.16
79	0.19	180	0.27
80	0.25	181	0.08
81	0.56	182	0.20
82	0.08	183	0.31
83	0.26	184	0.19
84	0.13	185	0.07
85	0.12	186	0.32
86	0.28	187	0.36
87	0.77	188	0.15
88	0.10	189	0.07
89	0.10	191	0.15
90	0.38	192	0.12
91	0.45	193	0.05
92	0.12	194	0.18
93	0.11	195	0.07
94	0.42	196	0.10
95	0.57	197	0.06
96	0.11	198	0.07
97	0.38	199	0.10
98	0.10	200	
99	0.43	201	0.26
100	0.19	202	0.28
101	0.10	203	0.12
102	0.18	204	0.14
103	1.31	205	0.19
104	0.31	206	0.08
105	0.15	207	0.47
106	0.17	208	0.51
107	0.21	209	0.19
108	0.24	210	0.10
109	0.09	211	0.08
110	0.17	212	0.08
111	0.23	213	0.10
112	0.12	214	0.21
113	0.21	215	0.12
114	0.52	216	0.11
115	0.38	217	0.06
TOTAL	70.82		0.47

MILEAGE SUMMARY

CLASS 2	6.680
TH-1	2.960
TH-2	3.460
TH-3	0.210
TH-4	0.750
TH-5	2.030
TH-6	0.800
TH-7	2.180
TH-8	1.300
TH-9	0.140
TH-10	0.350
TH-11	0.090
TH-12	0.170
TH-13	
TH-14	
TOTAL CLASS 2	21.870
CLASS 3	70.82
TOTAL CLASS 3	70.82
TOTAL TOWN	92.690
STATE HIGHWAY	2.431
VT-2A	0.960
VT-15	1.361
VT-127	0.142
TOTAL STATE HIGHWAY	3.934
US HIGHWAY	2.196
US-2	0.860
US-7	1.336
TOTAL US HIGHWAY	9.156
INTERSTATE	7.568
I-89	7.568
TOTAL INTERSTATE	7.568
INTERSTATE - Ramps	2.206
I-89	2.206
TOTAL INTERSTATE - Ramps	2.206
TOTAL INTERSTATE	9.774
TOTAL TRAVELED HIGHWAYS, FEB. 10, 2019: 115.554	

(Excludes Class 4 and Legal Trail Mileage)

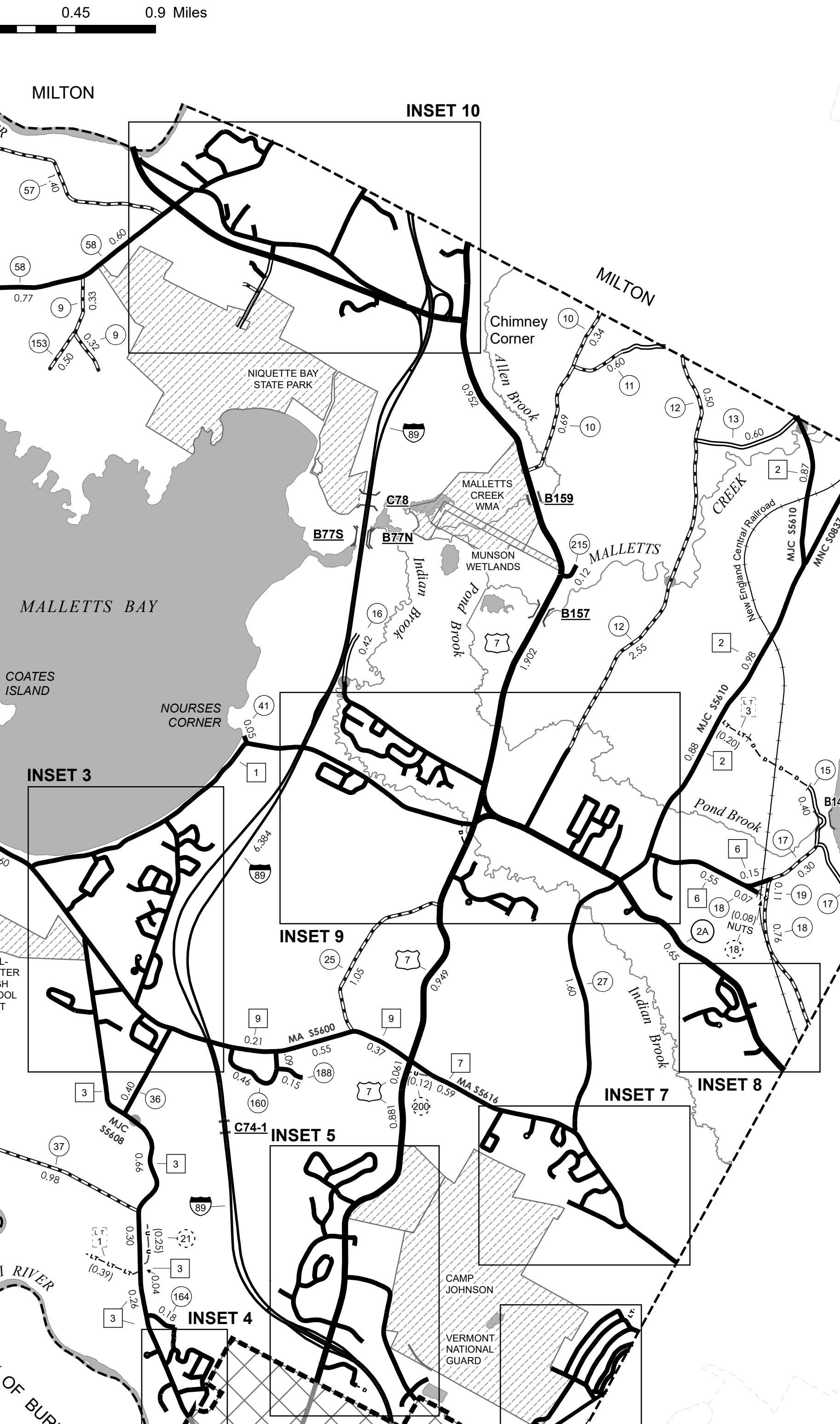
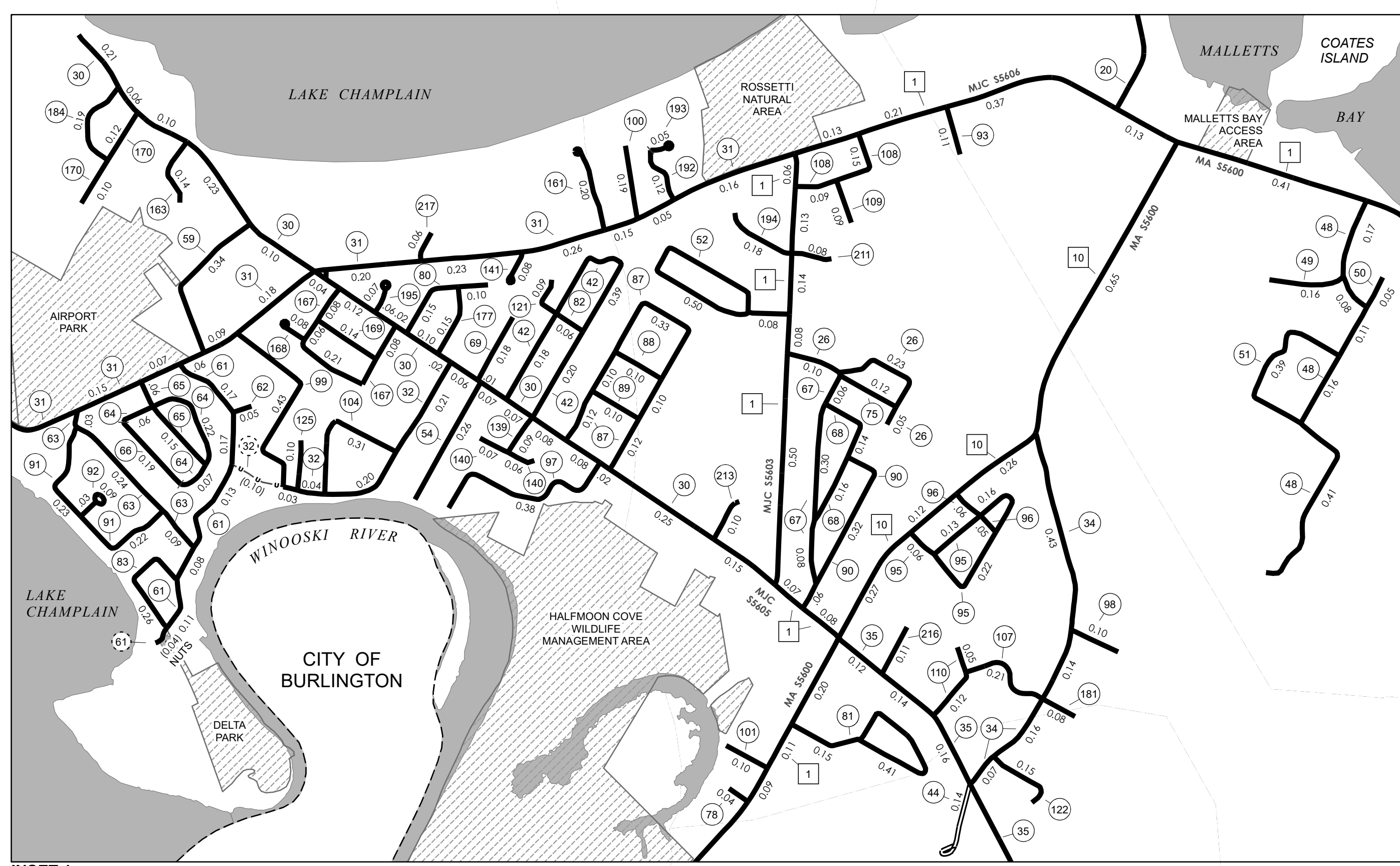
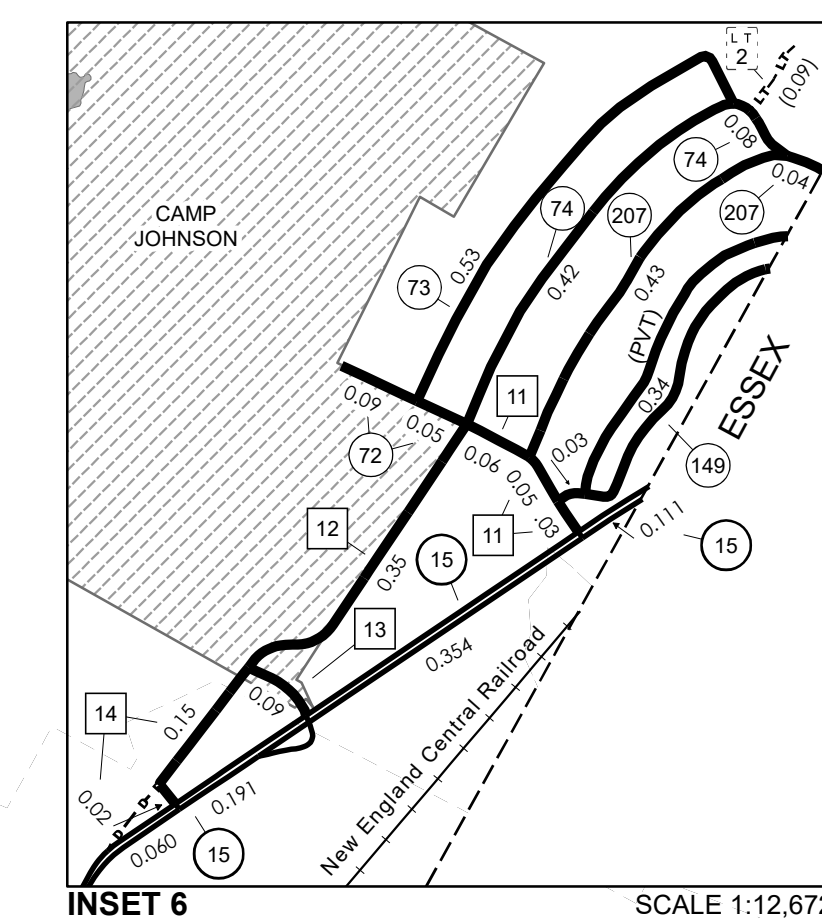
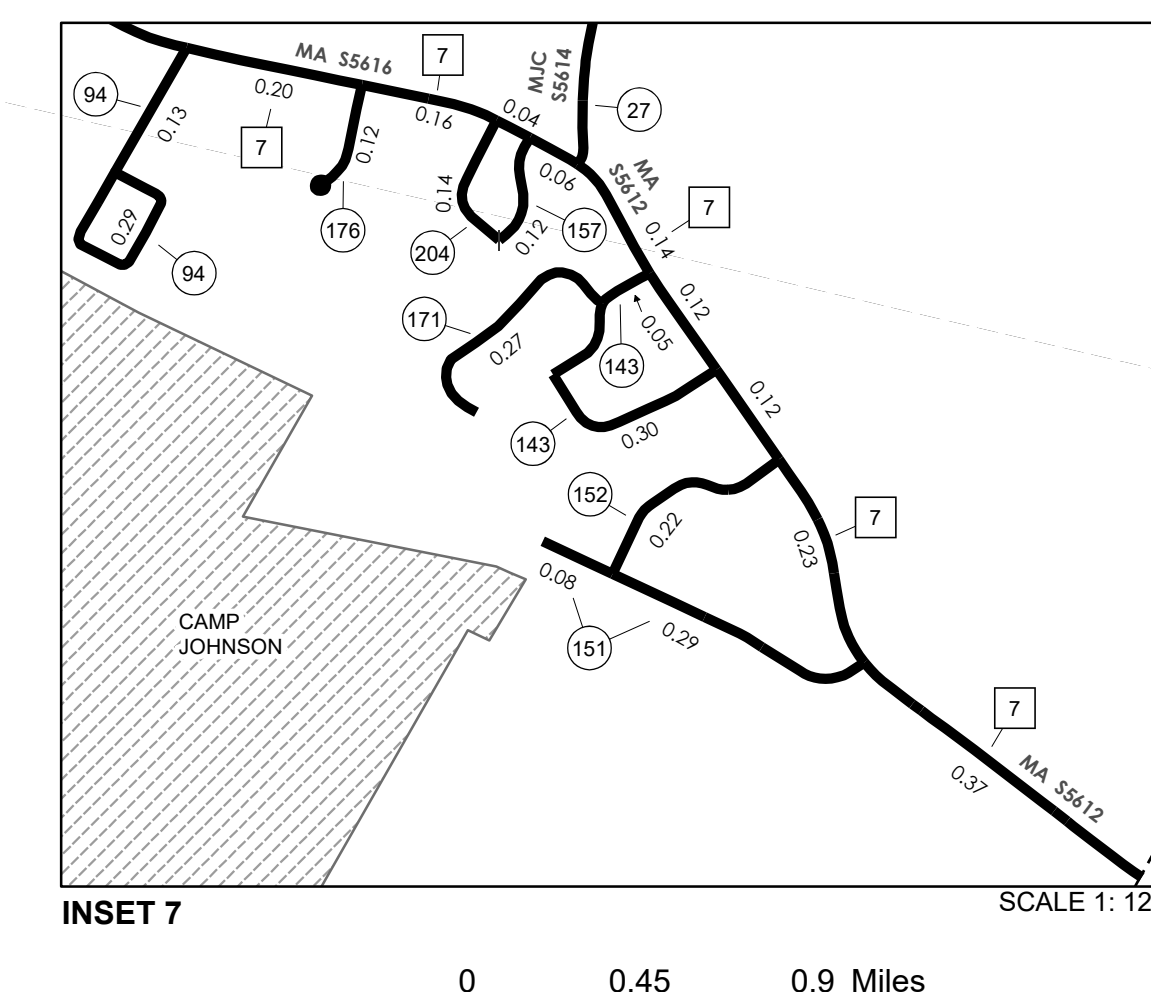
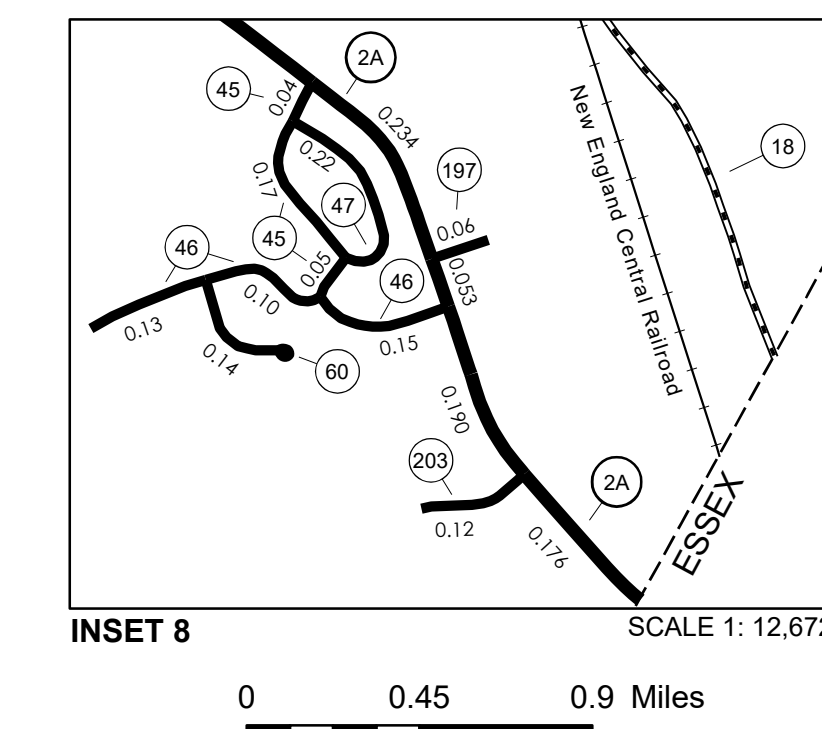
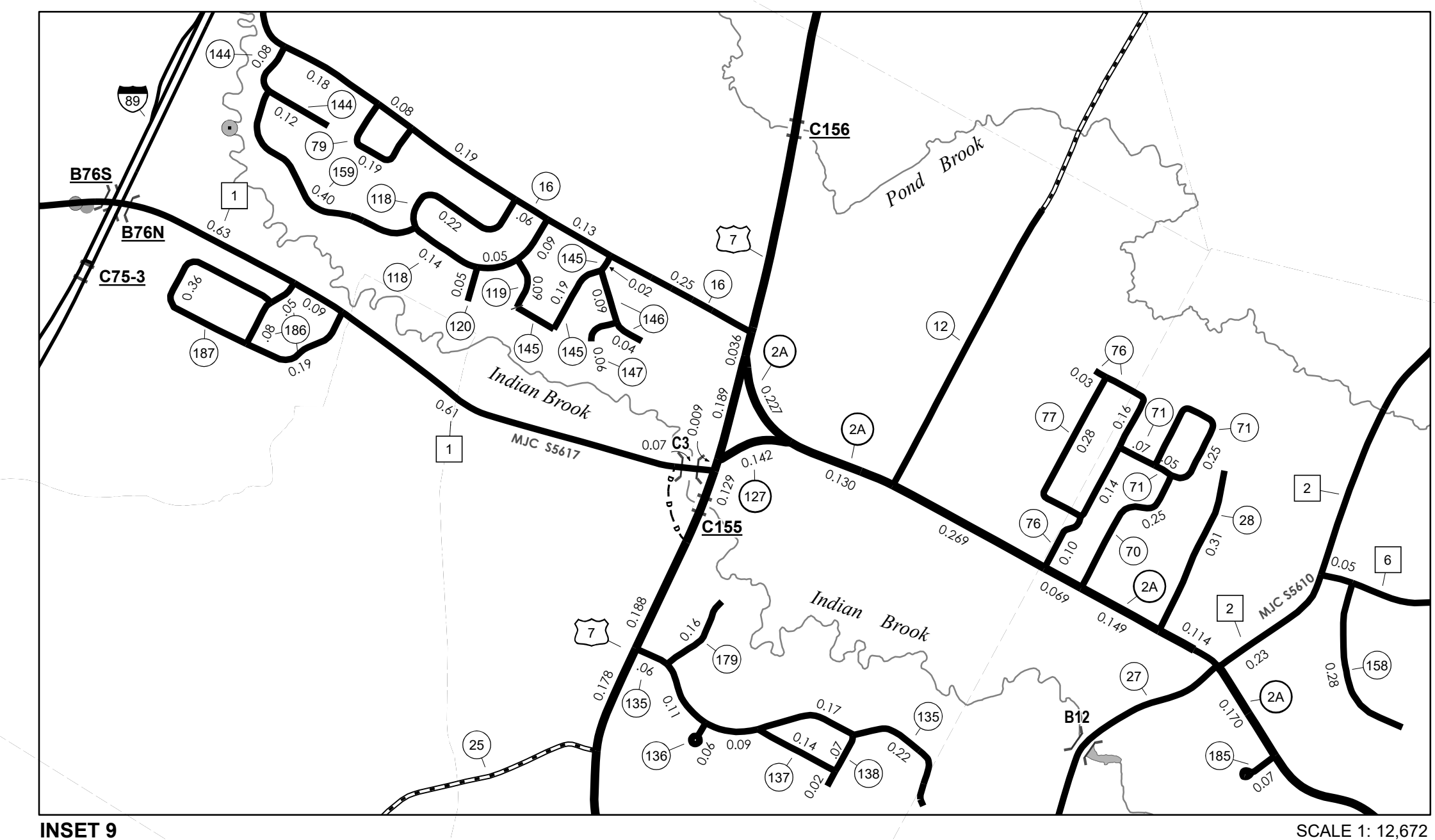
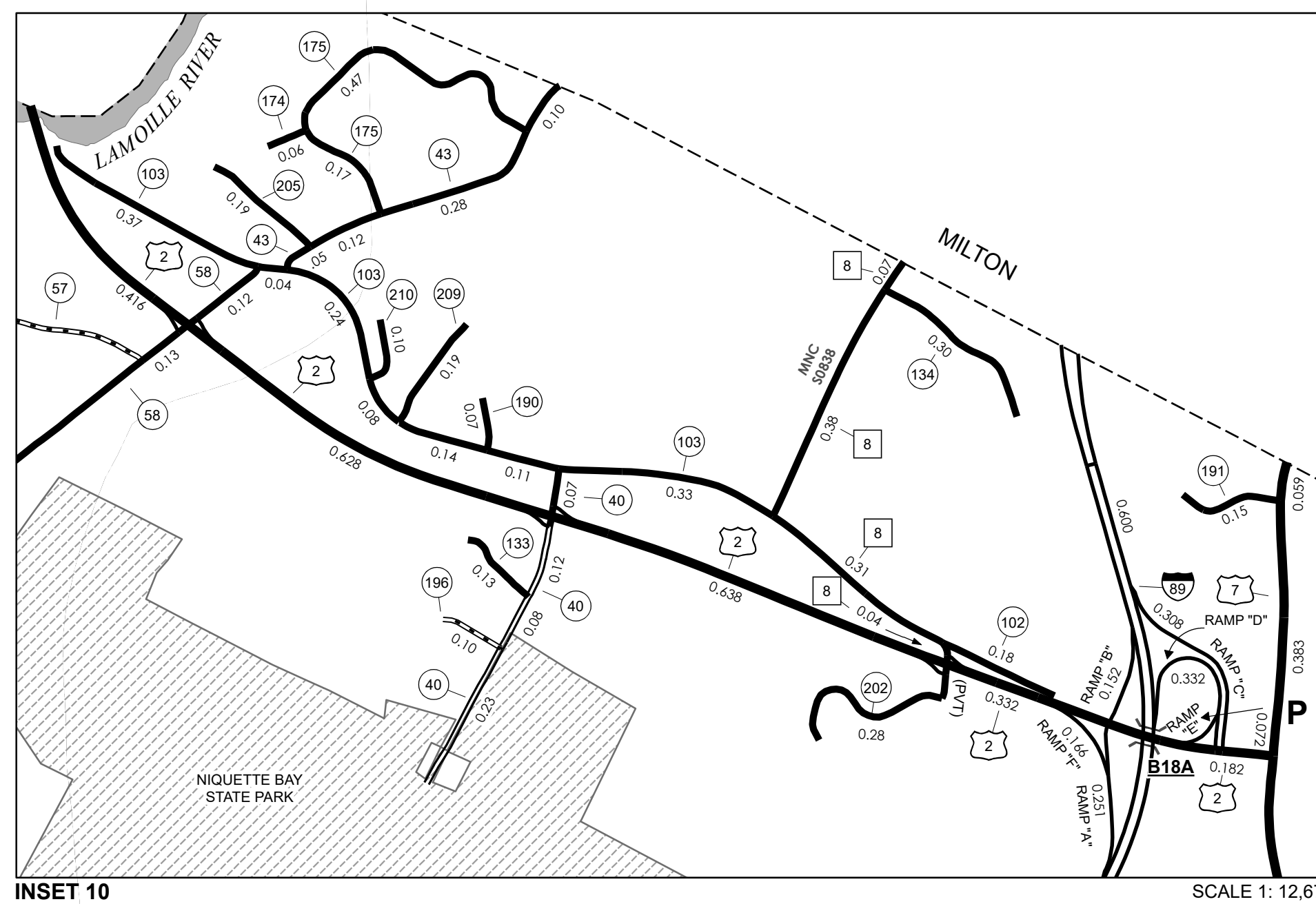
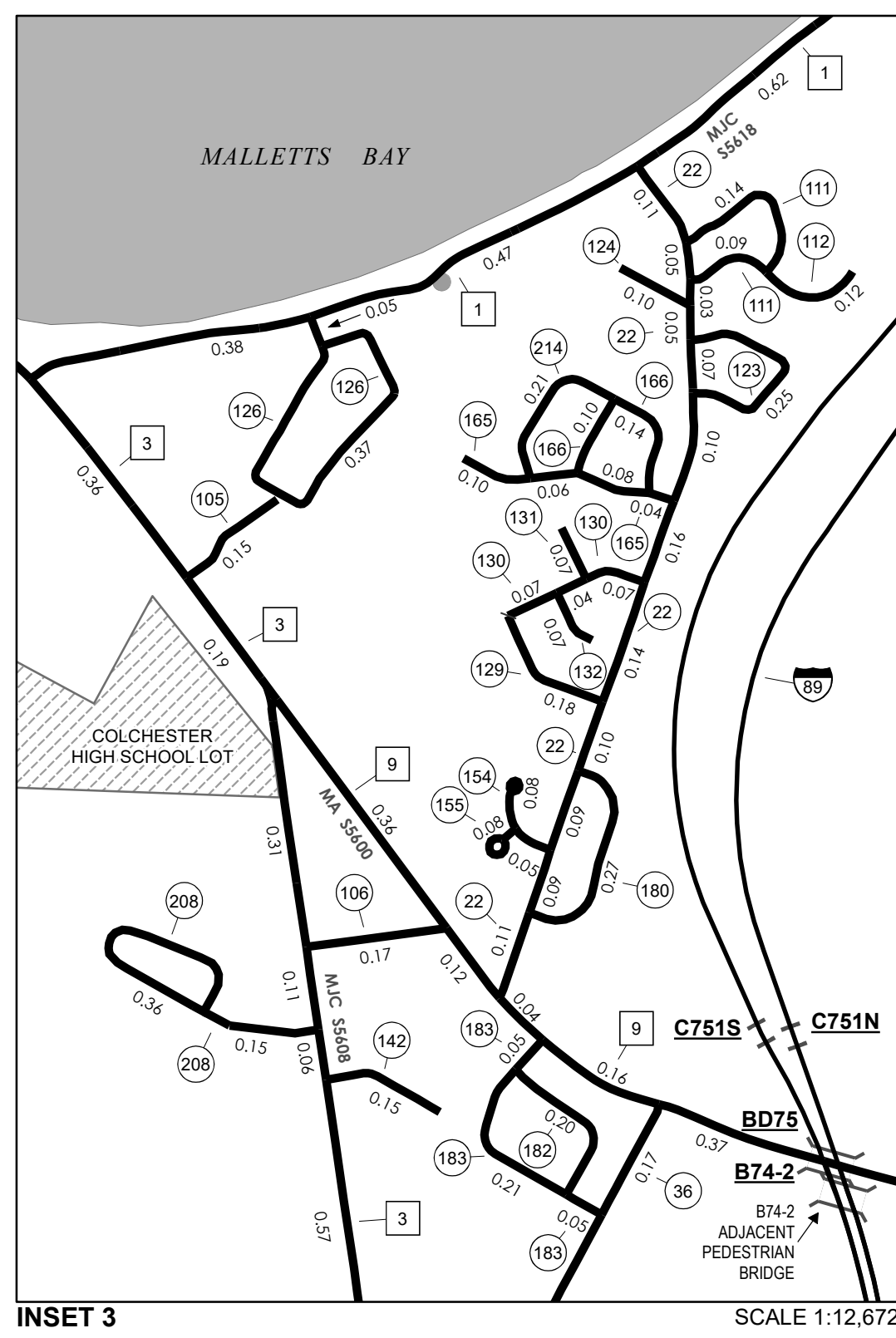
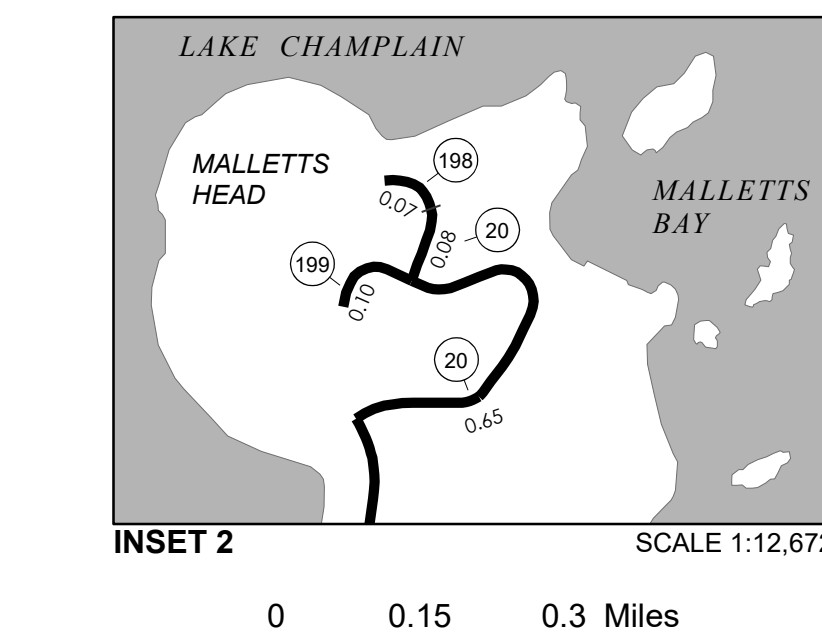
TOWN HWY. No.

LENGTH IN MILES "NOT UP TO STANDARD"	
18	(0.08)
61	(0.04)
TOTAL	0.12

**The sections of the town highways listed above are legally Class 3, but have been deemed "Not Up To Standard" and are functionally Class 4 Town Highways*

LEGAL TRAIL LENGTH IN MILES

No.	LEGAL TRAIL
1	(0.39)
2	(0.09)
3	(0.20)
TOTAL	0.68



- HIGHWAYS**
- INTERSTATE
 - U.S. ROUTE
 - STATE ROUTE
 - CLASS 1
 - CLASS 2
 - CLASS 3
 - CLASS 4
 - LEGAL TRAIL
- BRIDGE OR CULVERT**
- BRIDGE OR CULVERT > 20'
 - BRIDGE OR CULVERT 6' - 20'
 - BIKE PATH STRUCTURE
 - VT CULVERTS BRIDGE
 - VT CULVERTS CULVERT > 6'
 - B34 / C34 STATE BRIDGE OR CULVERT IDENTIFIER
 - B34 / C34 TOWN BRIDGE OR CULVERT IDENTIFIER
- NFR NATIONAL FOREST ROAD**
- SFR STATE FOREST HIGHWAY
 - P PARK AND RIDE
- FEDERAL CLASSIFICATION IDENTIFIER**
- MA MINOR ARTERIAL
 - MJC MAJOR COLLECTOR
 - MNC MINOR COLLECTOR
 - PA PRINCIPAL ARTERIAL

DISCLAIMER:
The untraveled highways (fold-out town highways), discontinued highways, and legal trails hereon are those of which the Agency of Transportation has record; others may exist.

Highway and bridge data by the Agency of Transportation. Town short structures drawn from the VT CULVERTS (formerly VCOBCT) online database. All other data from the Vermont Center for Geographic Information. Only named streams shown.

Vermont State Plane Coordinate System
North American Datum of 1983
SPCS Zone Identifier: 4400
Geodetic Reference System 80
4,000-meter grid, Easting - Northing

VERMONT GENERAL HIGHWAY MAP
Town of Colchester
CHITTENDEN COUNTY
Transportation District #5
Prepared by the Vermont Agency of Transportation
Division of Policy, Planning and Intermodal Development
in cooperation with
U.S. Department of Transportation
Federal Highway Administration

Mileage as of February 10, 2019
Map prepared April 18, 2019

SCALE 1:31,680

