



MILEAGE SUMMARY

| | |
|---|--------|
| CLASS 2 | 6.680 |
| TH-1 | 2.860 |
| TH-2 | 3.460 |
| TH-3 | 0.210 |
| TH-4 | 0.750 |
| TH-5 | 0.750 |
| TH-6 | 2.030 |
| TH-7 | 0.800 |
| TH-8 | 2.180 |
| TH-9 | 1.300 |
| TH-10 | 0.140 |
| TH-11 | 0.350 |
| TH-12 | 0.090 |
| TH-13 | 0.170 |
| TH-14 | 0.170 |
| TOTAL CLASS 2 | 21.870 |
| CLASS 3 | 70.36 |
| TOTAL CLASS 3 | 70.36 |
| TOTAL TOWN | 92.230 |
| STATE HIGHWAY | 2.431 |
| VT-2A | 1.860 |
| VT-15 | 1.361 |
| VT-127 | 0.142 |
| TOTAL STATE HIGHWAY | 3.934 |
| US HIGHWAY | 2.196 |
| US-2 | 0.960 |
| US-7 | 1.236 |
| TOTAL US HIGHWAY | 9.156 |
| TOTAL STATE | 13.090 |
| INTERSTATE | 7.568 |
| I-89 | 7.568 |
| TOTAL INTERSTATE | 7.568 |
| INTERSTATE - Ramps | 2.206 |
| I-89 | 2.206 |
| TOTAL INTERSTATE - Ramps | 2.206 |
| TOTAL INTERSTATE | 9.774 |
| TOTAL, TRAVELED HIGHWAYS, FEB. 10, 2018: 115.094 | |

(Excludes Class 4 and Legal Trail Mileage)

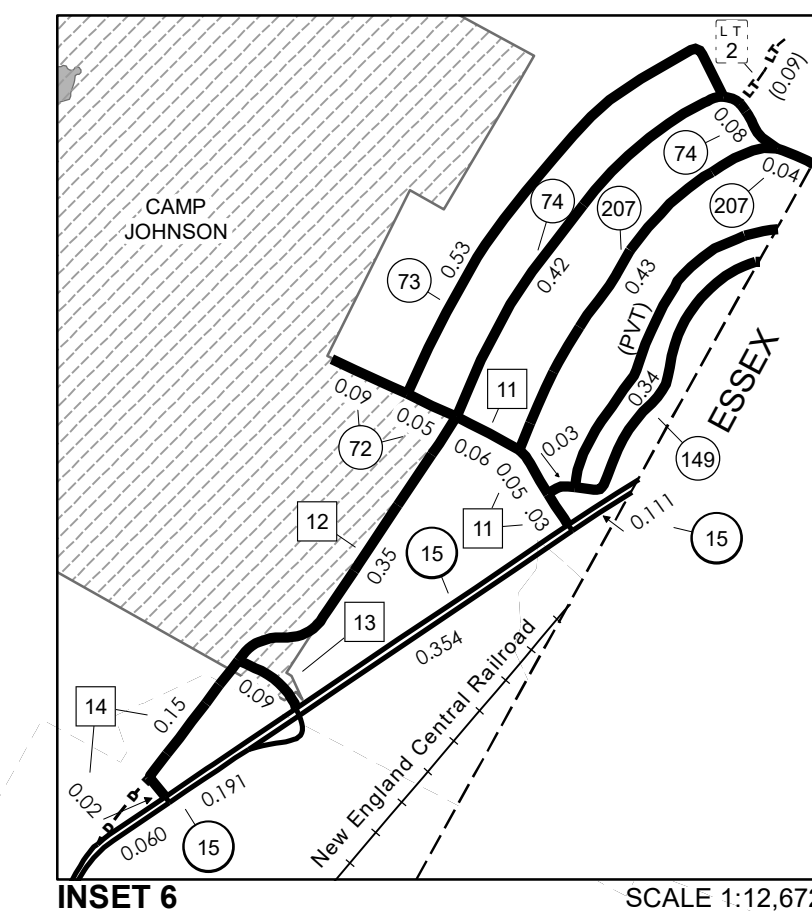
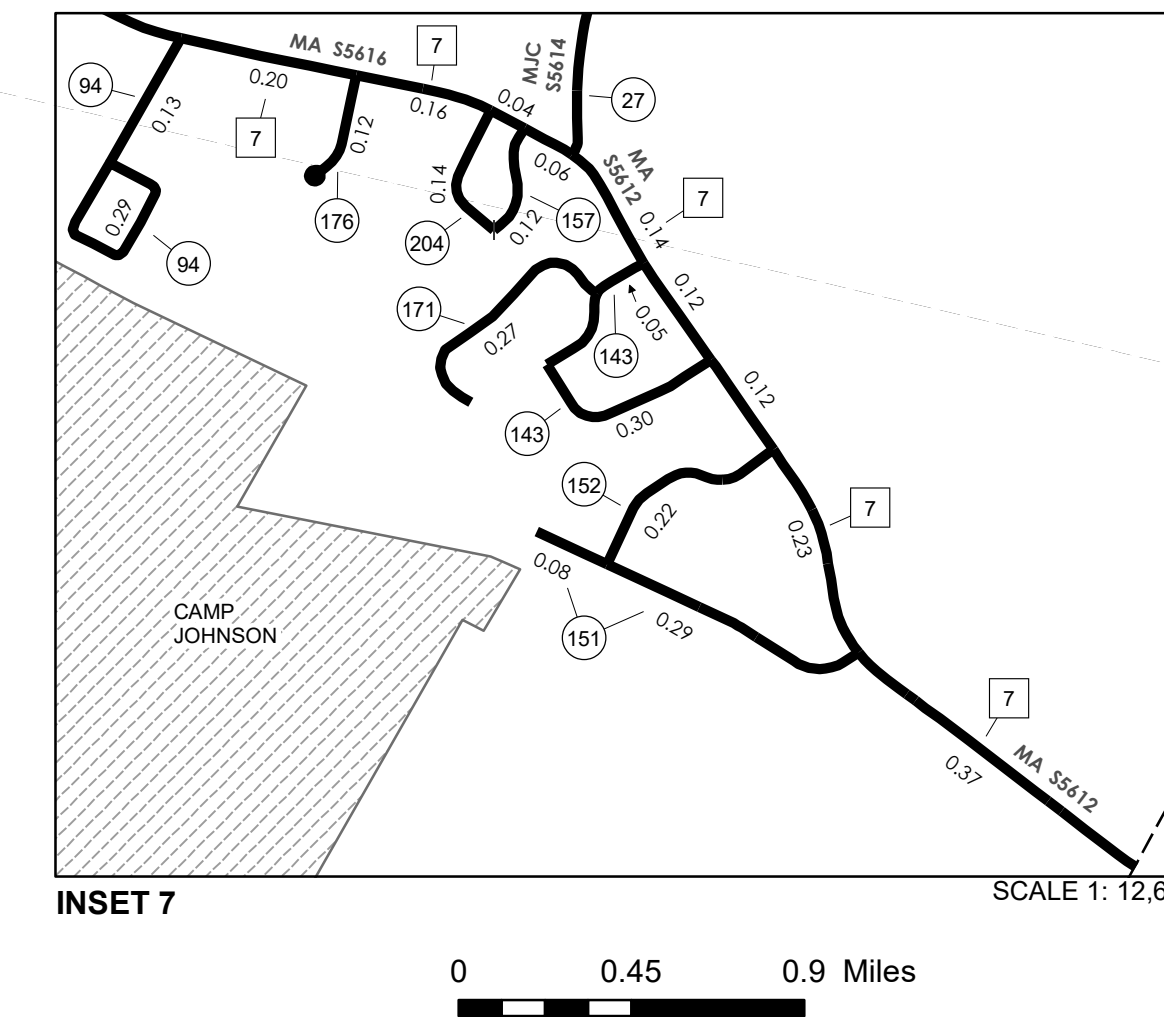
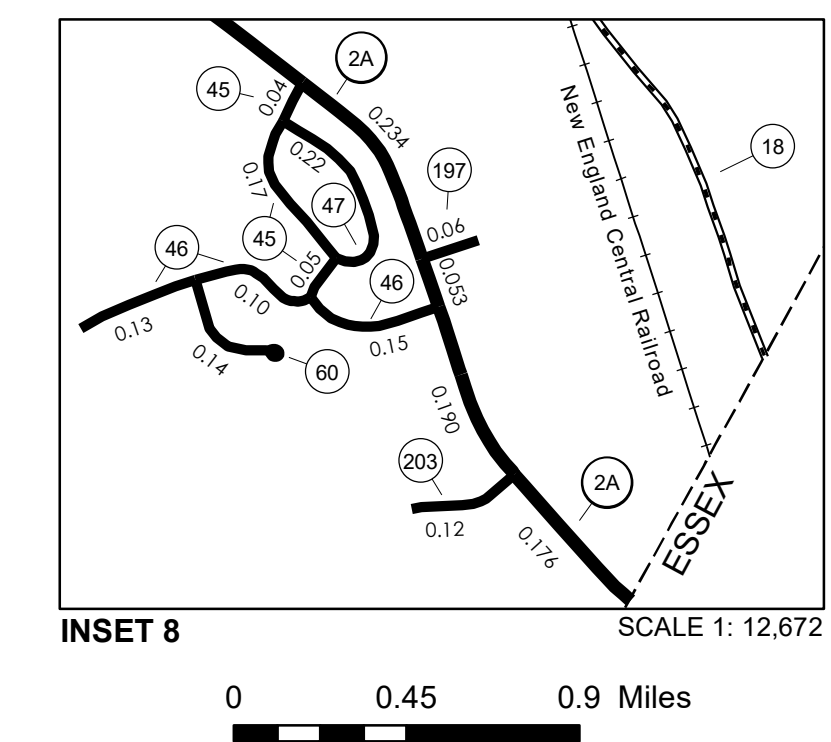
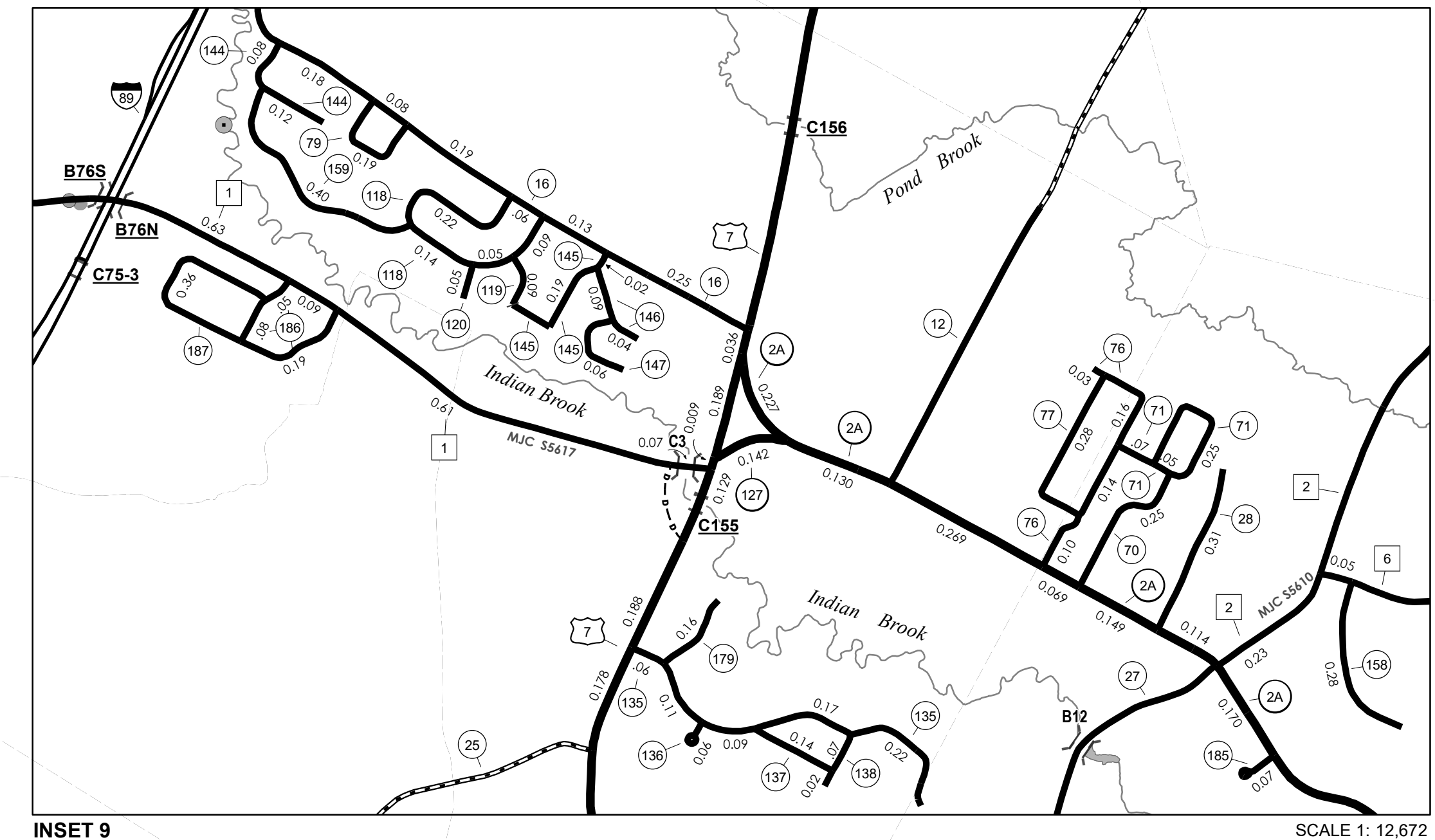
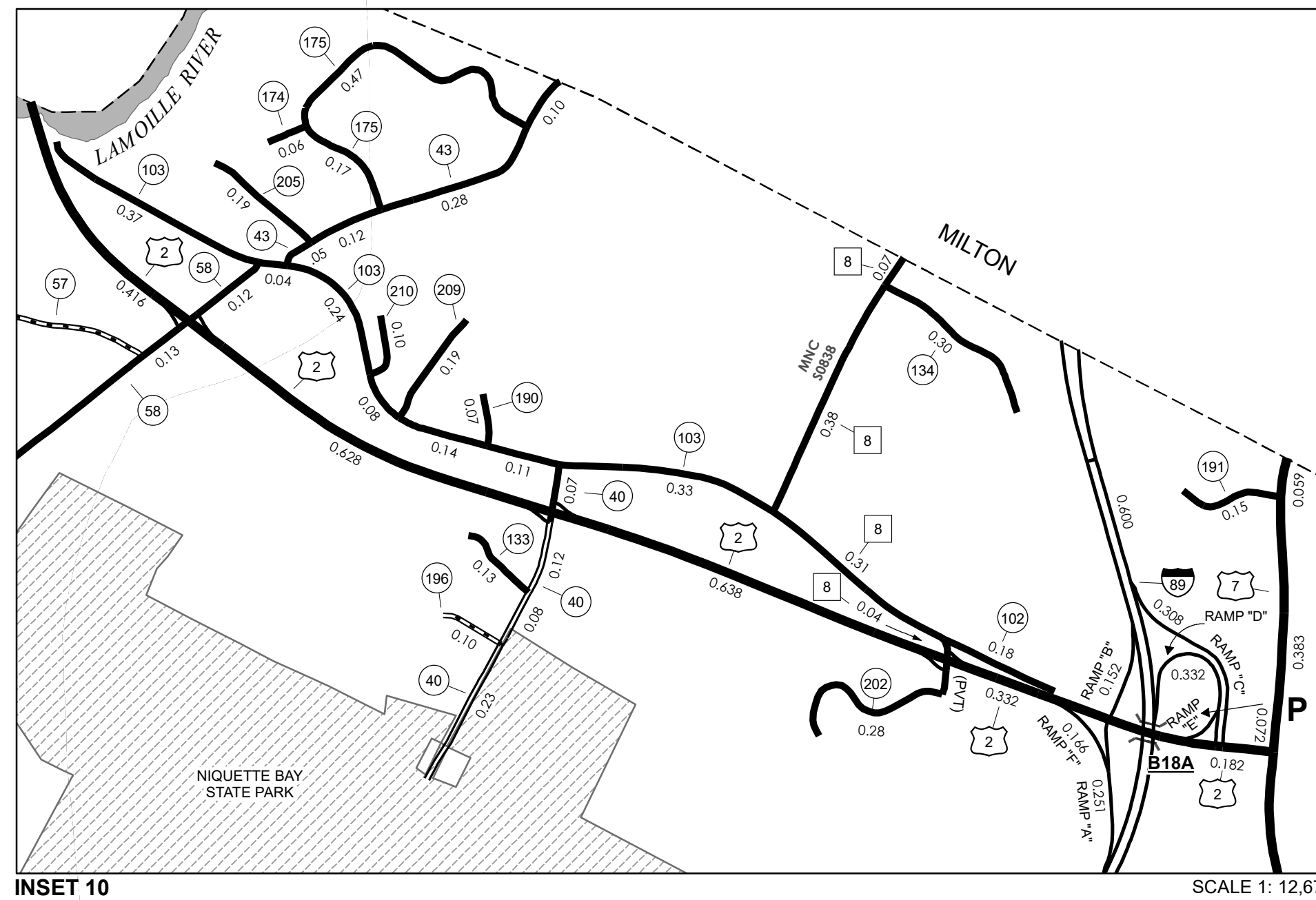
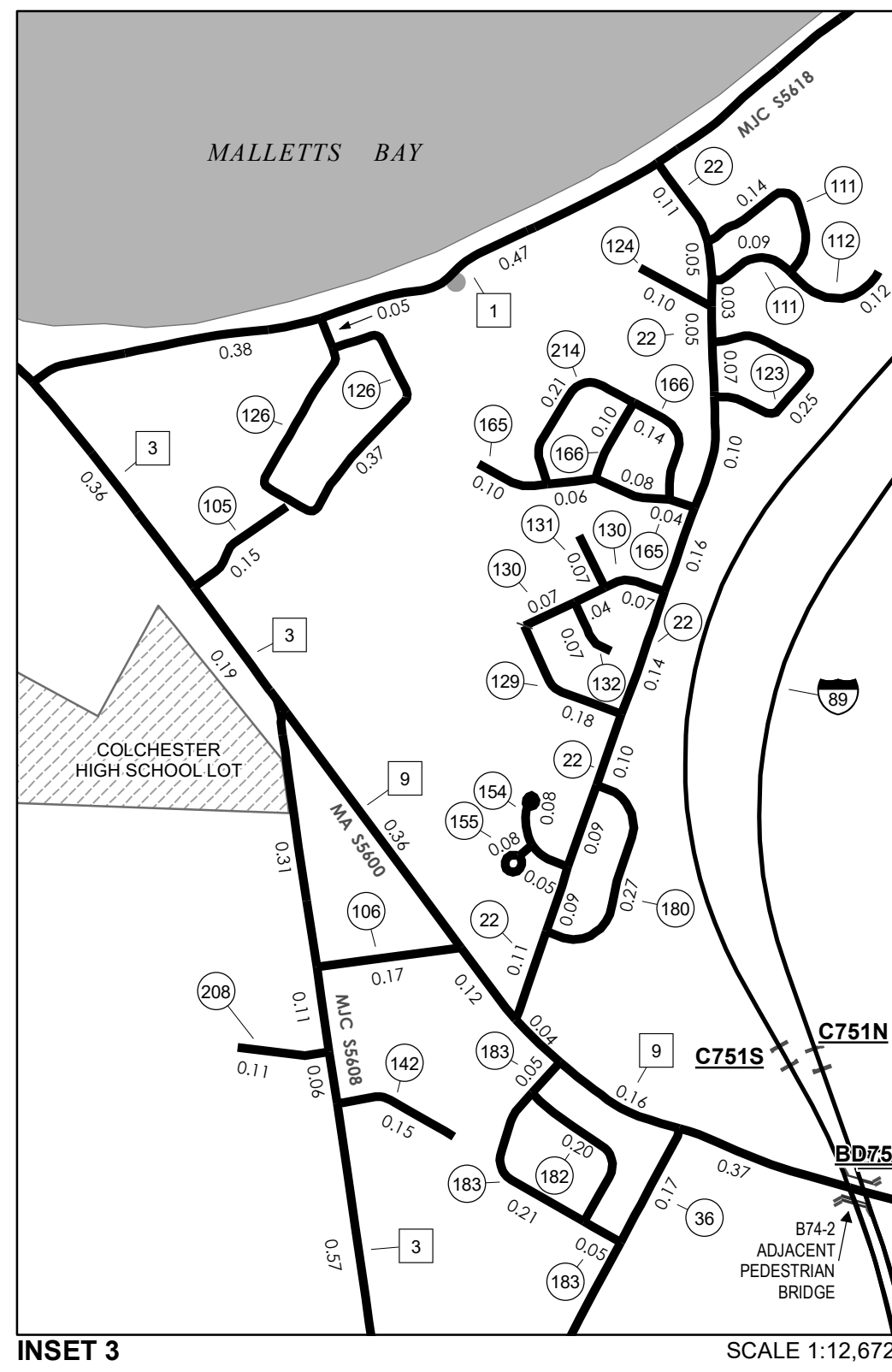
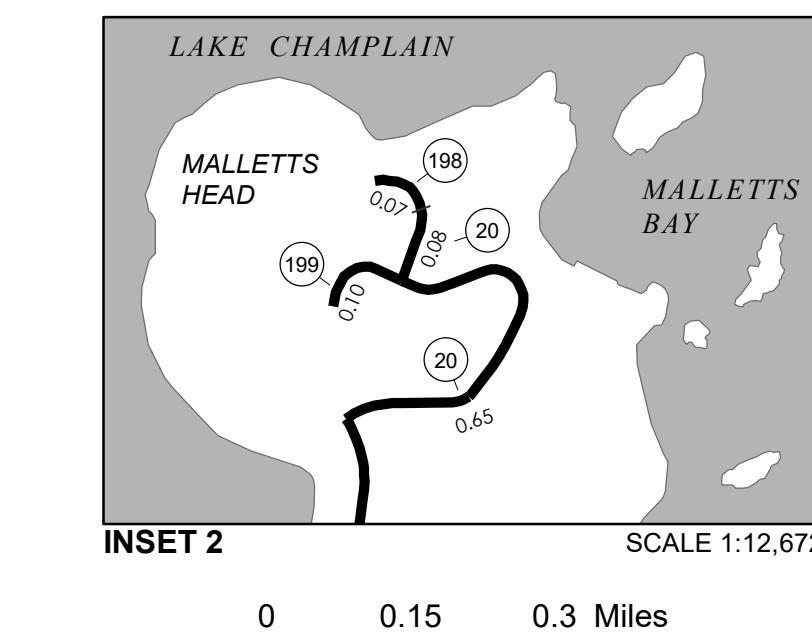
TOWN LENGTH IN MILES "NOT UP TO STANDARD"

| | |
|--------------|-------------|
| 18 | (0.08) |
| 61 | (0.04) |
| 81 | 0.12 |
| TOTAL | 0.12 |

**The sections of the town highways listed above are legally Class 3, but have been deemed "Not Up To Standard" and are functionally Class 4 Town Highways*

LEGAL TRAIL LENGTH IN MILES

| | |
|--------------|-------------|
| 1 | (0.39) |
| 2 | (0.09) |
| 3 | (0.20) |
| TOTAL | 0.68 |



- HIGHWAYS**
- INTERSTATE
 - U.S. ROUTE
 - STATE ROUTE
 - CLASS 1
 - CLASS 2
 - CLASS 3
 - CLASS 4
 - LEGAL TRAIL
- BRIDGE OR CULVERT**
- BRIDGE OR CULVERT > 20'
 - BRIDGE OR CULVERT 6' - 20'
 - BIKE PATH STRUCTURE
 - VT CULVERTS BRIDGE
 - VT CULVERTS CULVERT > 6'
 - B34 / C34 STATE BRIDGE OR CULVERT IDENTIFIER
 - B34 / C34 TOWN BRIDGE OR CULVERT IDENTIFIER
- NFR** NATIONAL FOREST ROAD
- SFH** STATE FOREST HIGHWAY
- P** PARK AND RIDE
- FEDERAL CLASSIFICATION IDENTIFIER**
- MA MINOR ARTERIAL
 - MJC MAJOR COLLECTOR
 - MNC MINOR COLLECTOR
 - PA PRINCIPAL ARTERIAL

DISCLAIMER:
The untraveled highways (fold-out town highways), discontinued highways, and legal trails herein are those of which the Agency of Transportation has record; others may exist.

Highway and bridge data by the Agency of Transportation. Town short structures drawn from the VTCULVERTS (formerly VOBCTI) online database. All other data from the Vermont Center for Geographic Information. Only named streams shown.

Vermont State Plane Coordinate System
North American Datum of 1983
SPCS Zone Identifier: 4400
Geodetic Reference System 80
4,000-meter grid, Easting - Northing

VERMONT GENERAL HIGHWAY MAP
Town of Colchester
CHITTENDEN COUNTY
Transportation District #5

Prepared by the
Vermont Agency of Transportation
Division of Policy, Planning and Intermodal Development
in cooperation with
U.S. Department of Transportation
Federal Highway Administration

Mileage as of February 10, 2018
Map prepared July 25, 2018
SCALE 1:31,680