



MILEAGE SUMMARY

CLASS	LENGTH IN MILES
CLASS 2	6.680
TH-1	2.960
TH-2	3.440
TH-3	0.210
TH-4	0.750
TH-5	2.030
TH-6	0.800
TH-7	2.200
TH-8	1.300
TH-9	0.140
TH-10	0.350
TH-11	0.090
TH-12	0.170
TH-13	
TH-14	
TOTAL CLASS 2	21.870
CLASS 3	6.960
TOTAL CLASS 3	70.04
TOTAL TOWN	91.910
STATE HIGHWAY	2.431
VT-2A	1.860
VT-15	1.361
VT-127	0.142
TOTAL STATE HIGHWAY	3.934
US HIGHWAY	2.196
US-2	0.960
US-7	1.236
TOTAL US HIGHWAY	9.156
INTERSTATE	7.568
I-89	7.568
TOTAL INTERSTATE	7.568
INTERSTATE - Ramps	2.206
I-89	2.206
TOTAL INTERSTATE - Ramps	2.206
TOTAL INTERSTATE	9.774
TOTAL, TRAVELED HIGHWAYS, FEB. 10, 2016:	114.774

(Excludes Class 4 and Legal Trail Mileage)

TOWN HWY. No. LENGTH IN MILES "NOT UP TO STANDARD"

18	(0.08)
61	(0.04)
TOTAL	0.12

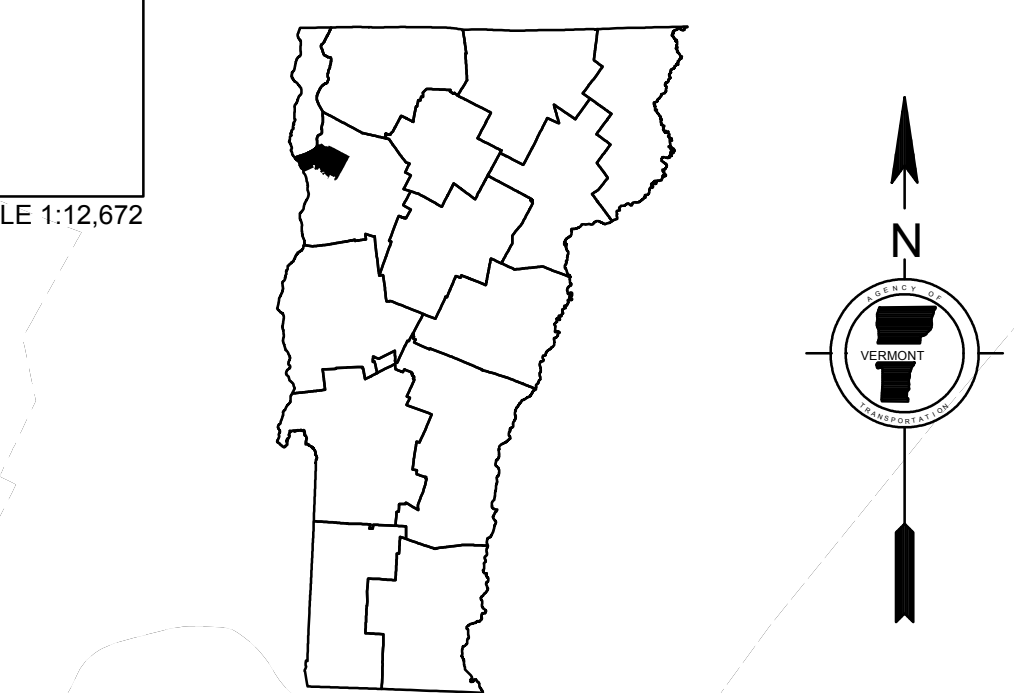
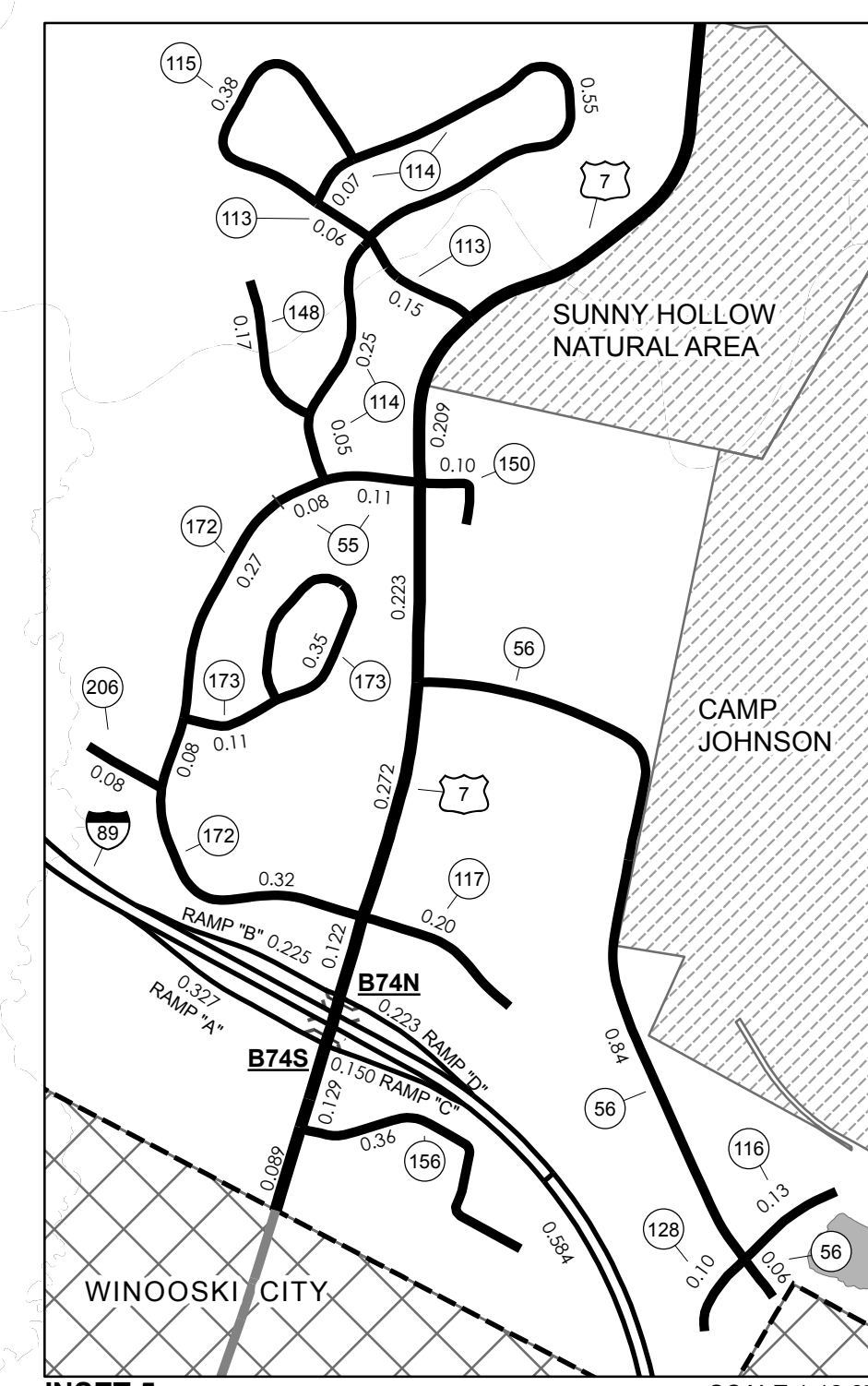
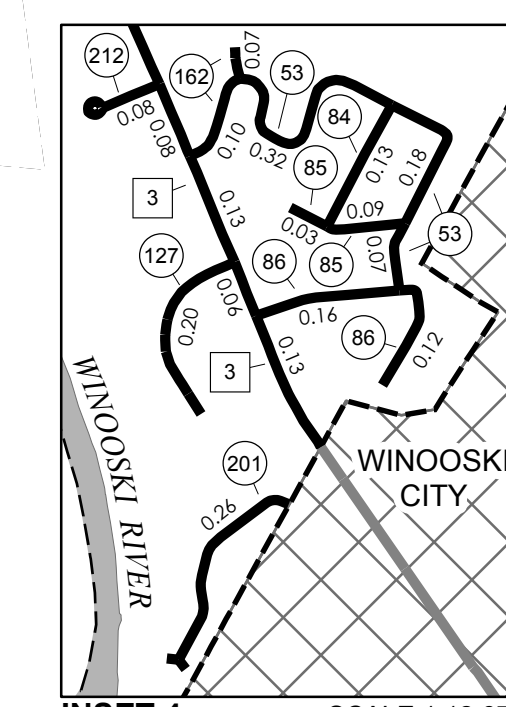
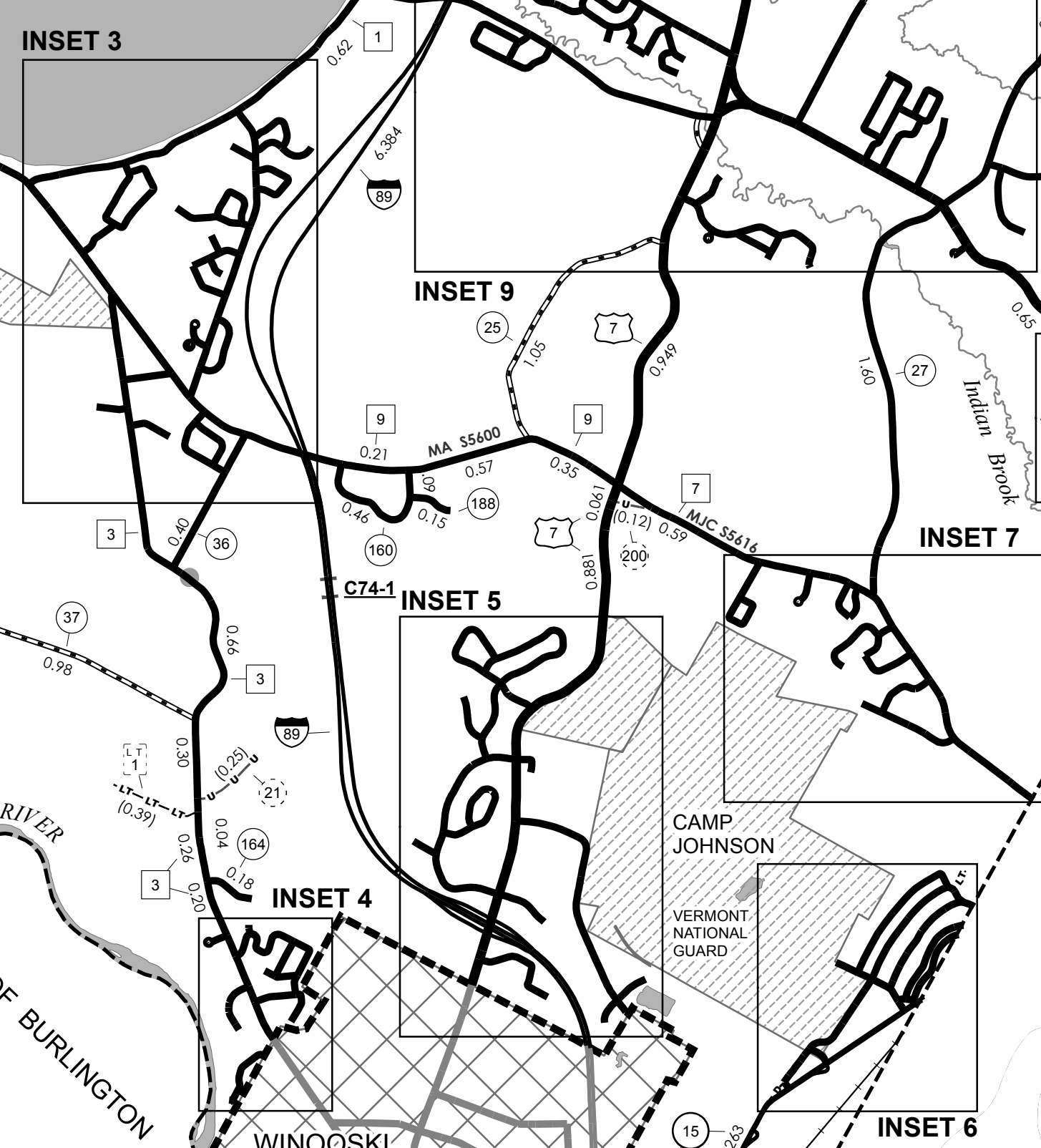
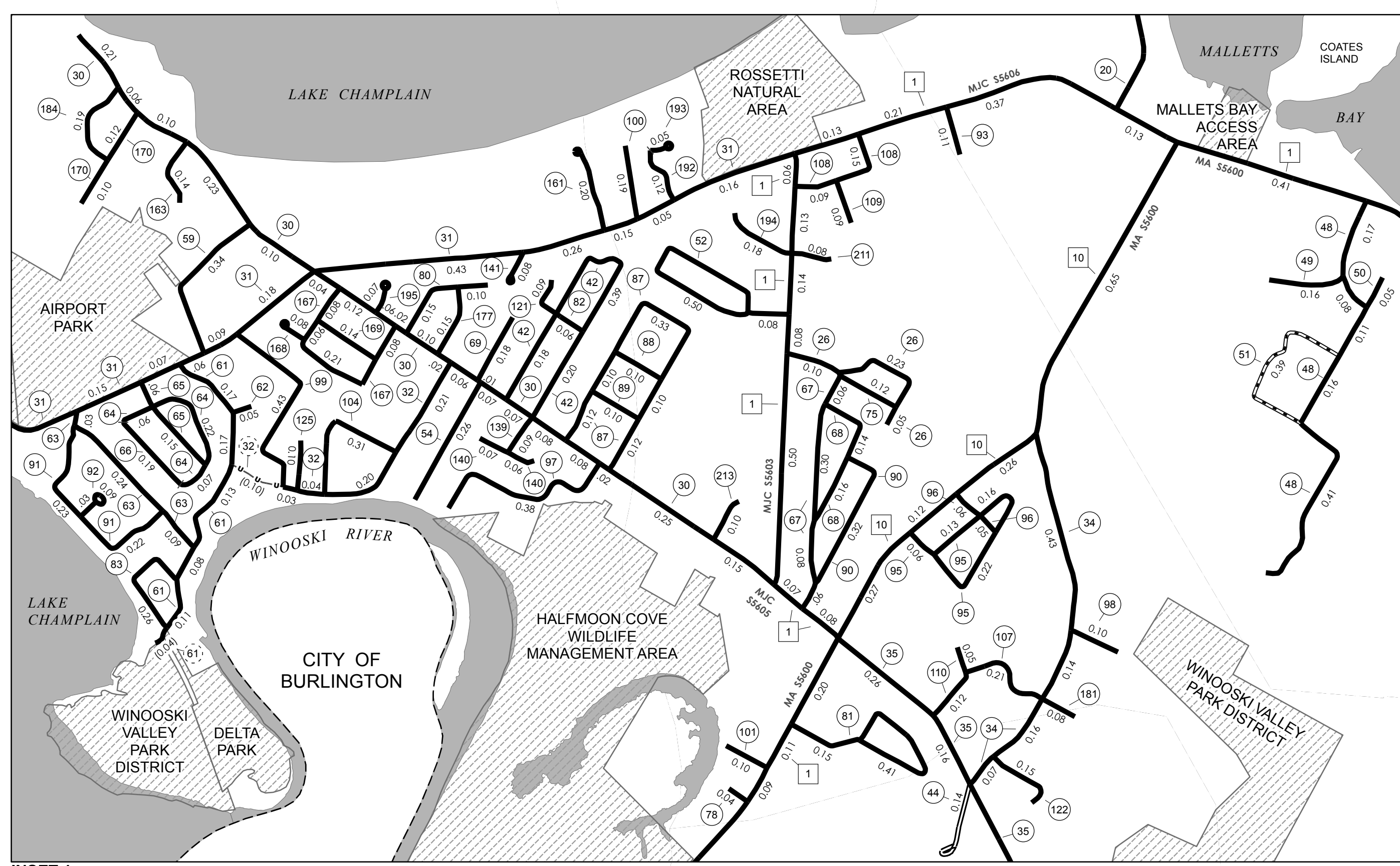
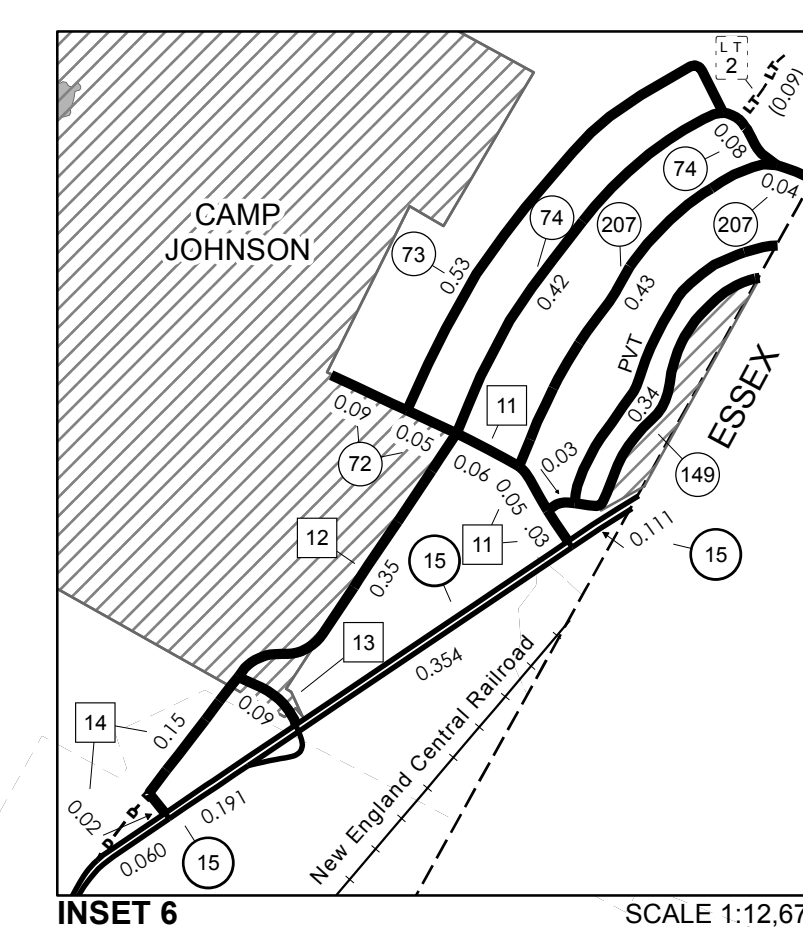
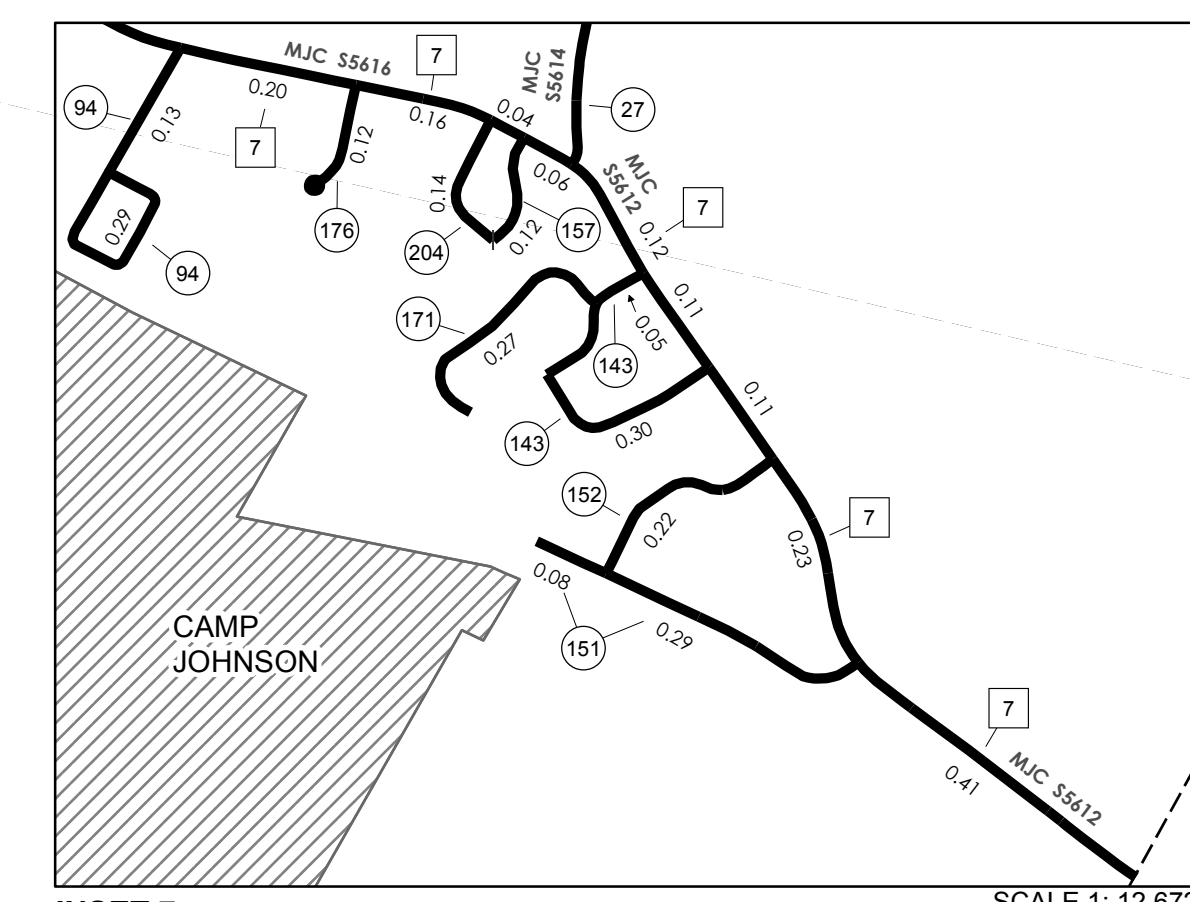
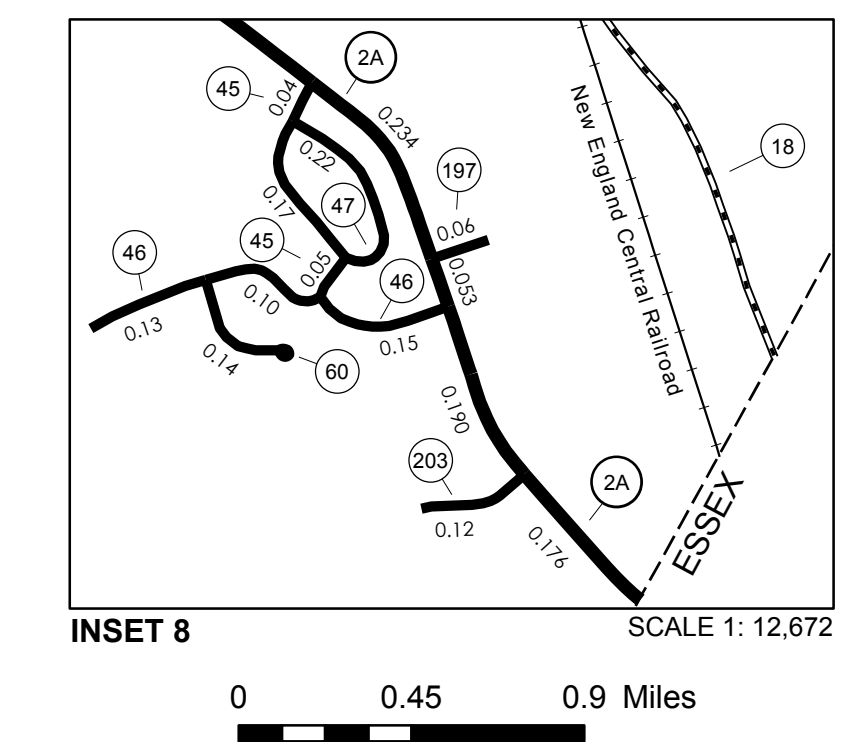
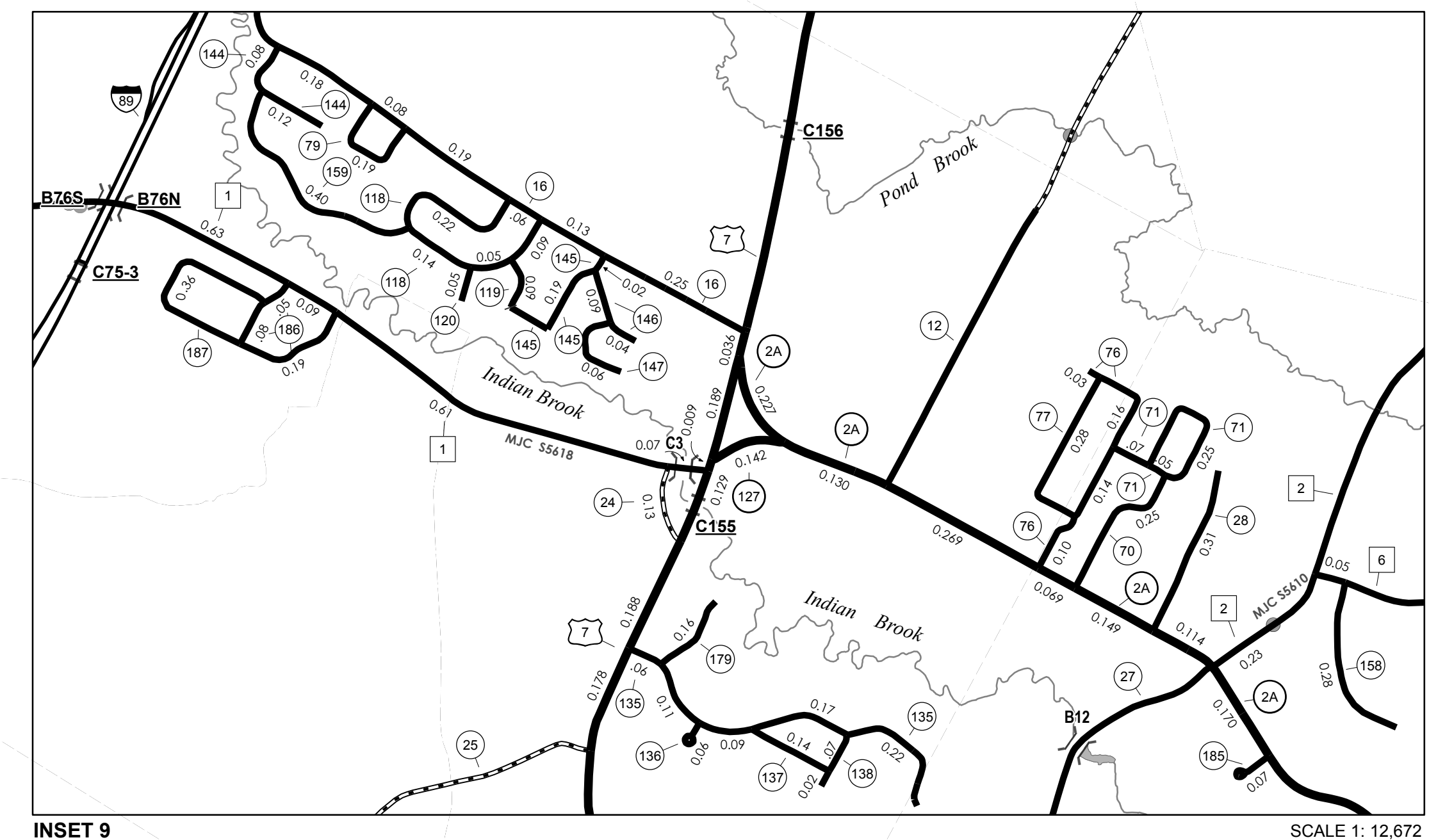
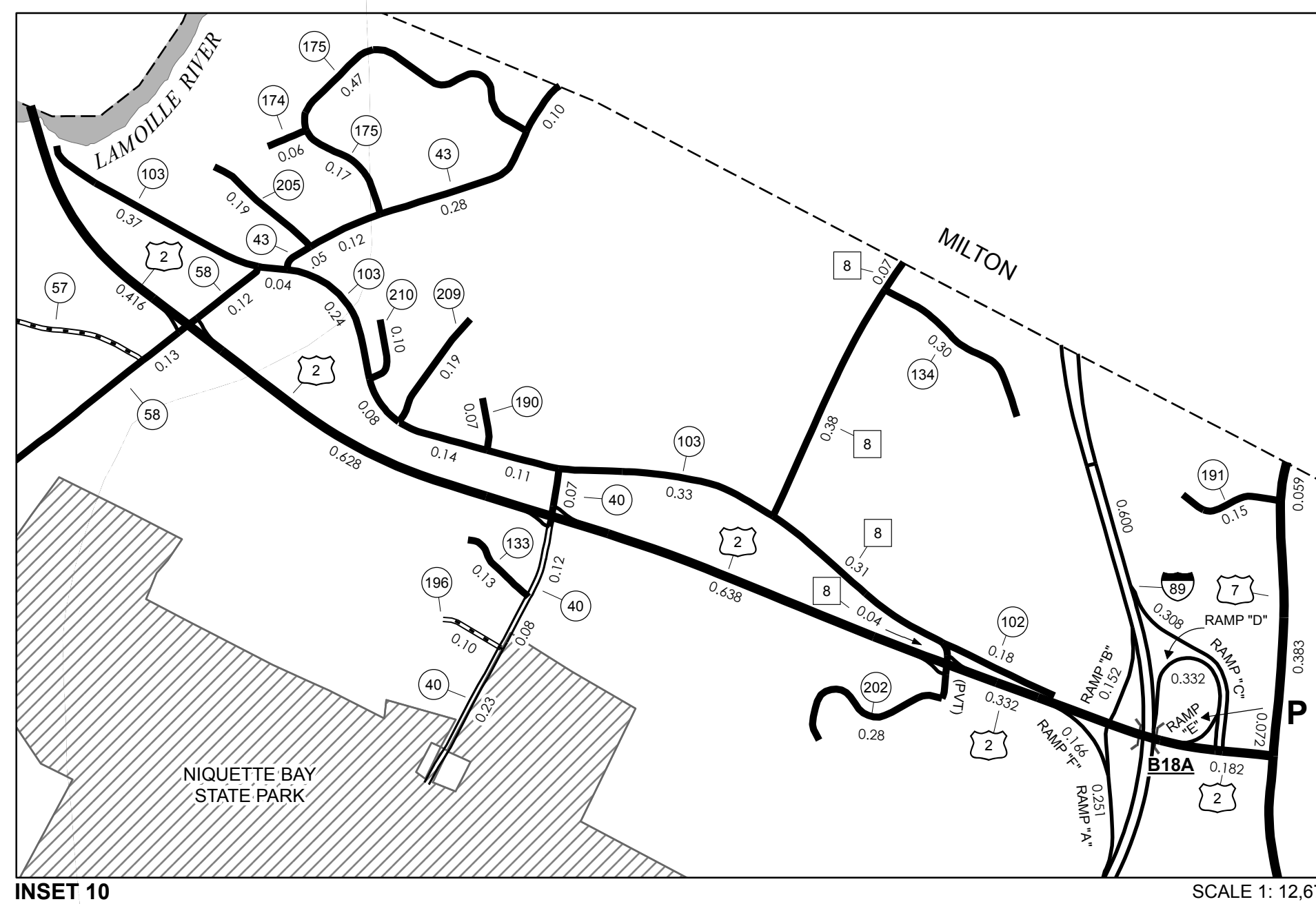
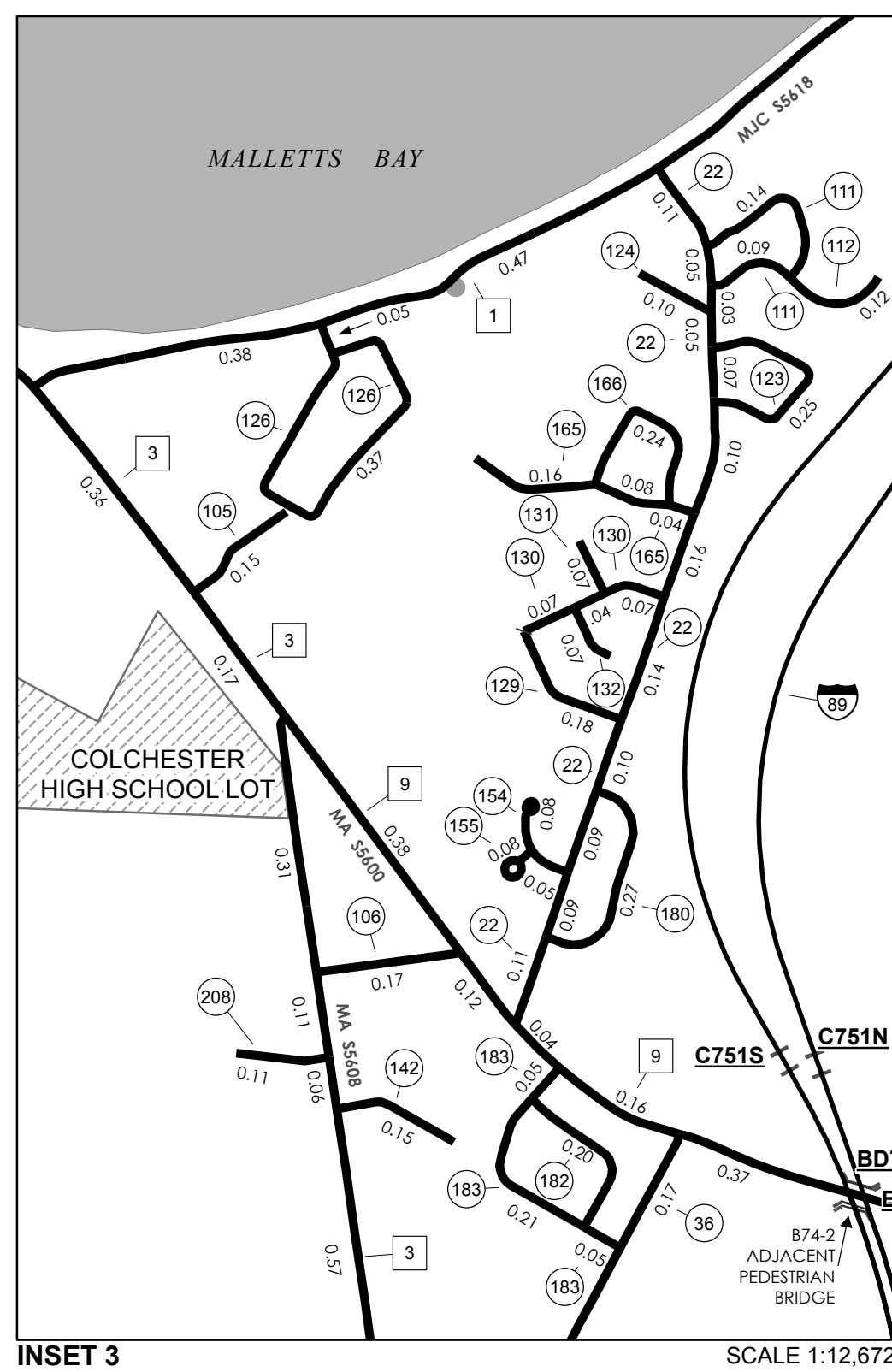
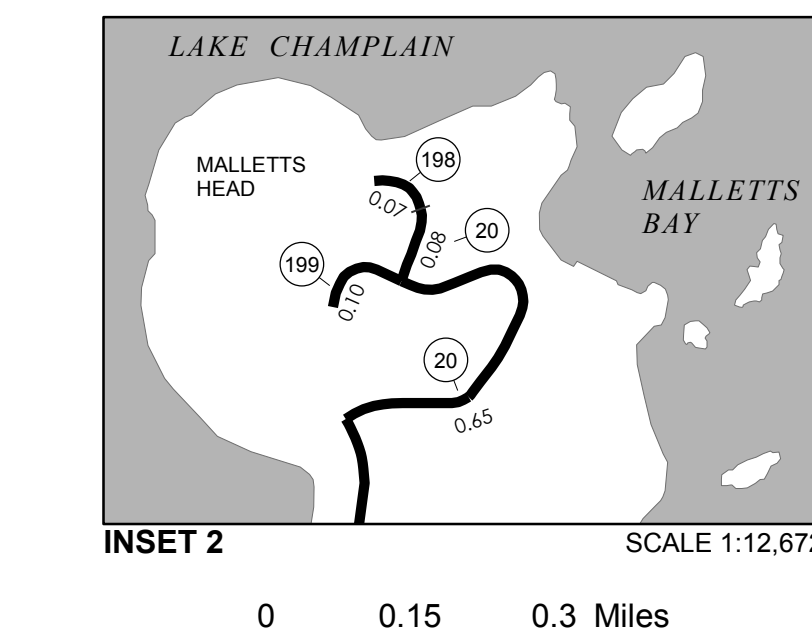
**The sections of the town highways listed above are legally Class 3, but have been deemed "Not Up To Standard" and are functionally Class 4 Town Highways*

LEGAL TRAIL LENGTH IN MILES

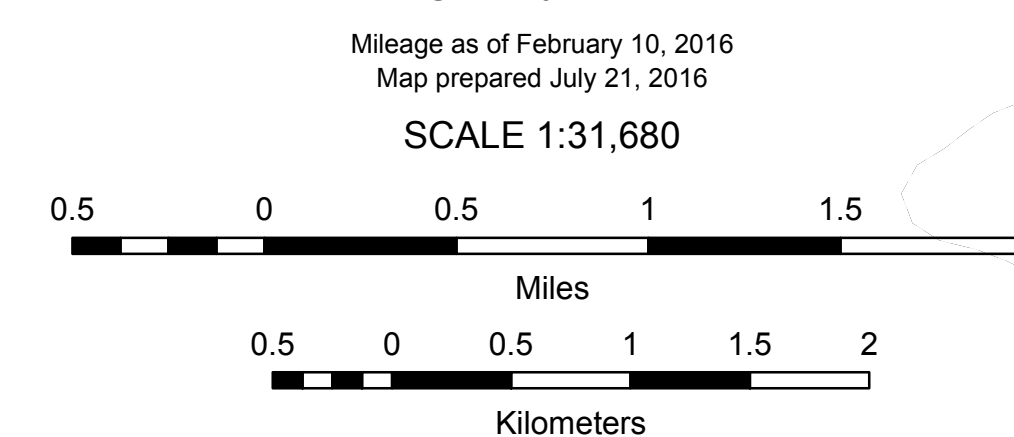
No.	LEGAL TRAIL
1	(0.39)
2	(0.09)
3	(0.20)
TOTAL	0.68

TOWN HWY. No. LENGTH IN MILES

9	0.65
10	1.03
11	0.60
12	3.35
13	0.80
14	0.35
15	0.40
16	1.31
17	0.90
18	0.83
19	0.11
20	1.37
21	
22	1.10
23	0.13
24	1.03
25	1.05
26	0.38
27	1.80
28	0.31
29	0.31
30	1.85
31	2.59
32	0.48
34	0.80
35	1.08
36	0.57
37	0.98
40	0.50
41	0.05
42	0.77
43	0.55
44	0.14
45	0.26
46	0.38
47	0.22
48	0.93
49	0.16
50	0.05
51	0.39
52	0.58
53	0.57
54	0.26
55	0.19
56	0.90
57	1.40
58	1.62
59	0.34
60	0.14
61	0.66
62	0.05
63	0.38
64	0.35
65	0.21
66	0.19
67	0.44
68	0.30
69	0.18
70	0.25
71	0.37
72	0.14
73	0.53
74	0.50
75	0.12
76	0.43
77	0.28
78	0.04
79	0.19
80	0.25
81	0.56
82	0.06
83	0.26
84	0.13
85	0.12
86	0.28
87	0.77
88	0.10
89	0.10
90	0.38
91	0.45
92	0.12
93	0.11
94	0.42
95	0.57
96	0.11
97	0.38
98	0.10
99	0.43
100	0.19
101	0.10
102	0.18
103	1.31
104	0.31
105	0.15
106	0.17
107	0.21
108	0.24
109	0.09
110	0.17
111	0.23
112	0.12
113	0.21
TOTAL	70.04



VERMONT GENERAL HIGHWAY MAP
Town of Colchester
 CHITTENDEN COUNTY
 Transportation District #5
 Prepared by the Vermont Agency of Transportation
 Division of Policy, Planning and Intermodal Development
 in cooperation with
 U.S. Department of Transportation
 Federal Highway Administration



DISCLAIMER:
 The untraveled highways (laid-out town highways), discontinued highways, and legal trails hereon are those of which the Agency of Transportation has record; others may exist.
 Highway and bridge data by the Agency of Transportation. Town short structures are drawn from the Vermont Online Bridge & Culvert Inventory Tool (VOCBIT) database. All other data from the Vermont Center for Geographic Information. Only named streams are shown.

Vermont State Plane Coordinate System
 North American Datum of 1983
 SPCS Zone Identifier: 4400
 Geodetic Reference System 80
 4,000-meter grid, Easting - Northing