

INSET 1  
SCALE: 1:12000 -- scale for insets (unless otherwise noted)  
0.2 0 0.2 0.4 0.6 0.8 Miles

TOWN NO.	HWY. CLASS 3	LENGTH IN MILES	HWY. CLASS 4	LENGTH IN MILES	
9	0.65	74	0.06	137	
10	1.03	75	0.12	139	
11	0.60	76	0.43	139	
12	3.05	77	0.28	140	
13	0.60	78	0.04	141	
14	0.35	79	0.15	142	
15	0.40	80	0.25	143	
16	1.31	81	0.56	144	
17	0.90	82	0.06	145	
18	0.83	83	0.26	146	
19	0.11	84	0.13	147	
20	1.37	85	0.12	148	
21		86	0.28	149	
22	1.10	87	0.77	150	
23		88	0.10	151	
24	0.13	89	0.10	152	
25	1.05	90	0.38	153	
26	0.38	91	0.45	154	
27	1.60	92	0.12	155	
28	0.31	93	0.11	156	
30	1.85	94	0.42	157	
31	2.00	95	0.57	158	
32	0.48	96	0.11	159	
34	0.60	97	0.38	160	
35	1.08	98	0.10	161	
36	0.57	99	0.43	162	
37	0.88	100	0.19	163	
38	0.20	101	0.10	164	
40	0.50	102	0.18	165	
41	0.05	103	1.31	166	
42	0.77	104	0.31	167	
43	0.55	105	0.15	168	
44	0.14	106	0.17	169	
45	0.26	107	0.21	170	
46	0.38	108	0.24	171	
47	0.22	109	0.09	172	
48	0.53	110	0.17	173	
49	0.16	111	0.23	174	
50	0.05	112	0.12	175	
51	0.39	113	0.21	176	
52	0.58	114	0.92	177	
53	0.57	115	0.38	178	
54	0.25	116	0.13	179	
55	0.19	117	0.20	180	
56	0.90	118	0.50	181	
57	1.40	119	0.06	182	
58	1.82	120	0.55	183	
59	0.34	121	0.09	184	
60	0.14	122	0.15	185	
61	0.66	123	0.25	186	
62	0.05	124	0.10	187	
63	0.36	125	0.10	188	
64	0.35	126	0.42	190	
65	0.21	127	0.20	191	
66	0.19	128	0.10	192	
67	0.44	129	0.18	193	
68	0.30	130	0.18	194	
69	0.18	131	0.07	195	
70	0.25	132	0.07	196	
71	0.37	133	0.13	197	
72	0.09	134	0.30	198	
73	0.38	135	0.55	199	
		136	0.06	200	
<b>TOTAL</b>		<b>66.71</b>	<b>1.15</b>	<b>TOTAL</b>	<b>0.48</b>

\* This portion of town highway is Class 3, but is functionally Class 4

- HIGHWAYS**
  - INTERSTATE
  - U.S. ROUTE
  - STATE ROUTE
  - CLASS 1
  - CLASS 2
  - CLASS 3
  - CLASS 4
- LEGAL TRAIL**
  - INTERSTATE OR DIVIDED HIGHWAY
  - STATE - HARD SURFACE OR PAVED
  - TOWN - HARD SURFACE OR PAVED
  - GRAVEL
  - SOIL OR GRADED AND DRAINED EARTH
  - UNIMPROVED OR PRIMITIVE
  - IMPASSABLE OR UNTRAVELED
  - LEGAL TRAIL
  - DISCONTINUED
  - HIGHWAY CLASS CHANGE
  - RAILROAD
  - PARK AND RIDE
- PUBLIC LAND**
- POLITICAL SUBDIVISIONS**
  - STATE BOUNDARY
  - COUNTY BOUNDARY
  - TOWN BOUNDARY
  - VILLAGE BOUNDARY
  - URBAN COMPACT BOUNDARY
  - OPEN WATER
  - STREAM OR BROOK
  - BRIDGE OR CULVERT
    - BRIDGE OR CULVERT GREATER THAN 20'
    - BRIDGE OR CULVERT 6' - 20'
- FEDERAL CLASSIFICATION IDENTIFIER**
  - FAU URBAN ARTERIAL OR COLLECTOR
  - MA MAJOR ARTERIAL
  - MC MAJOR COLLECTOR
  - MNC MINOR COLLECTOR
  - PA PRINCIPAL ARTERIAL

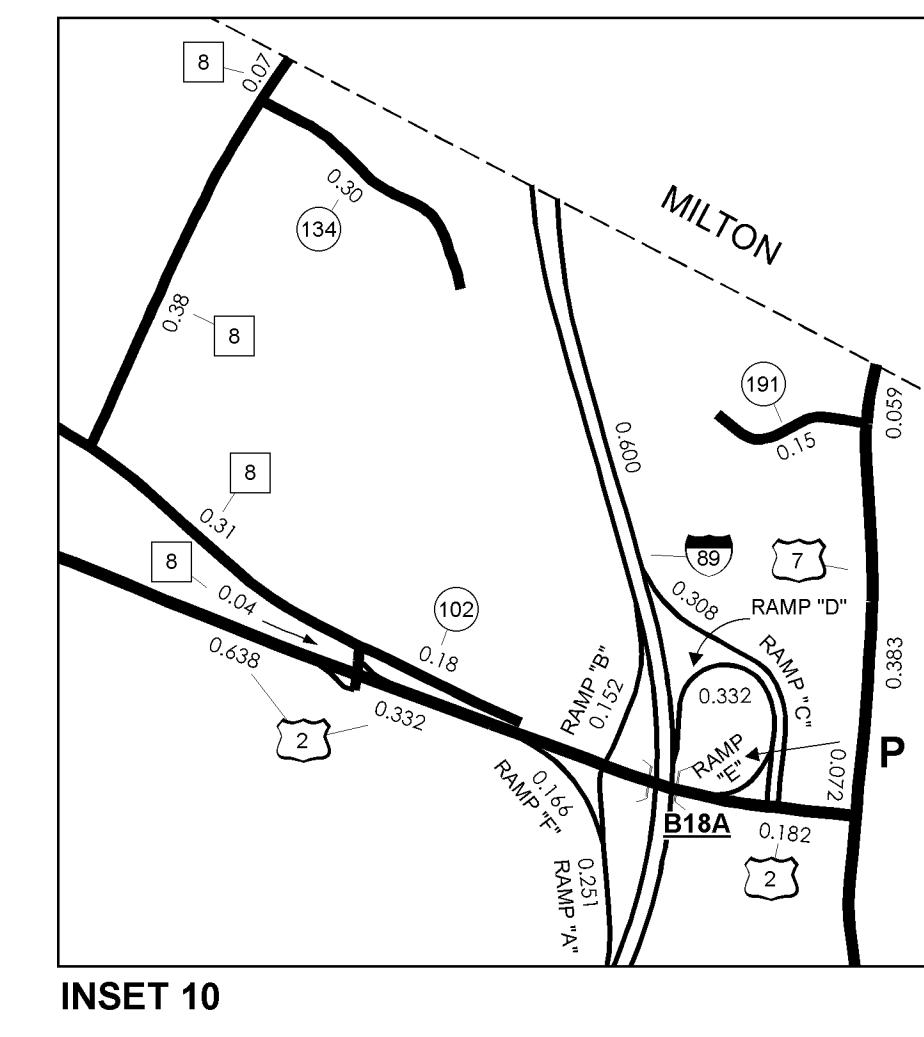
**DISCLAIMER:**  
The untraveled highways (laid-out town highways), discontinued highways, and legal trails shown hereon are those of which the Agency of Transportation has records; others may exist.  
Highway and bridge data by the Agency of Transportation, Policy & Planning Division. All other data from the Vermont Center for Geographic Information.

**STRUCTURES - SURFACE WATER NOTE:**  
Town short structures (bridges or culverts from 6-feet to less than 20-feet) were not represented due to inconsistencies in the data.  
The surface waters are from the Vermont Hydrological Dataset (VHD). Only the named streams are shown.

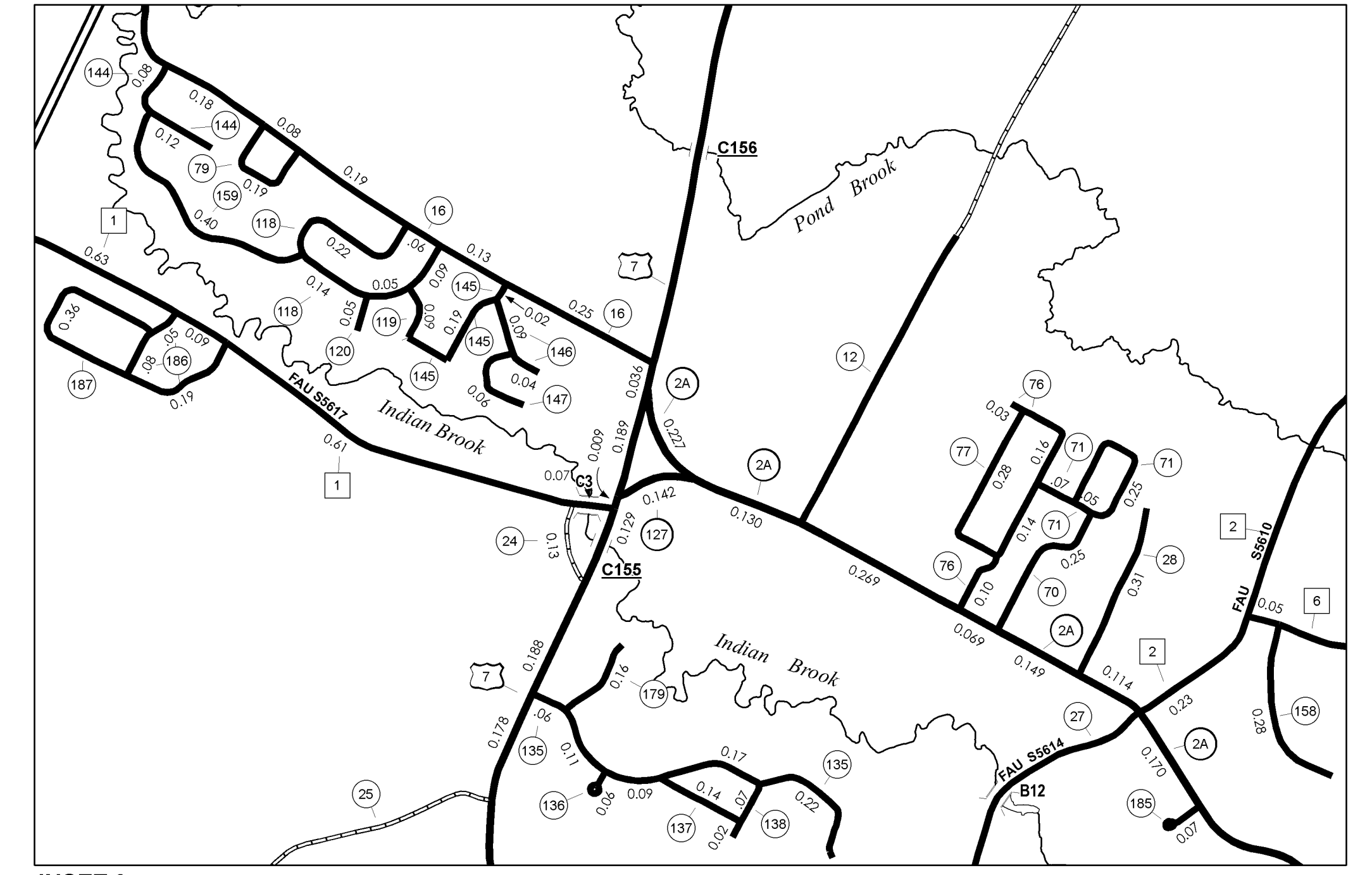
**MILEAGE SUMMARY**

<b>CLASS 2</b>	
TH-1	6.680
TH-2	2.960
TH-3	3.440
TH-4	0.210
TH-5	0.750
TH-6	0.750
TH-7	2.030
TH-8	0.800
TH-9	2.200
TH-10	1.300
<b>TOTAL CLASS 2</b>	<b>21.120</b>
<b>CLASS 3</b>	
<b>TOTAL CLASS 3</b>	<b>66.710</b>
<b>TOTAL TOWN</b>	<b>87.830</b>
<b>STATE HIGHWAY</b>	
VT-2A	2.431
VT-15	1.361
VT-127	0.142
<b>TOTAL STATE HIGHWAY</b>	<b>3.934</b>
<b>US HIGHWAY</b>	
US-2	2.196
US-7	6.960
<b>TOTAL US HIGHWAY</b>	<b>9.156</b>
<b>TOTAL STATE</b>	<b>13.090</b>
<b>INTERSTATE</b>	
I-89	7.568
<b>TOTAL INTERSTATE</b>	<b>7.568</b>
<b>INTERSTATE - Ramp</b>	
I-89	2.206
<b>TOTAL INTERSTATE - Ramp</b>	<b>2.206</b>
<b>TOTAL INTERSTATE</b>	<b>9.774</b>

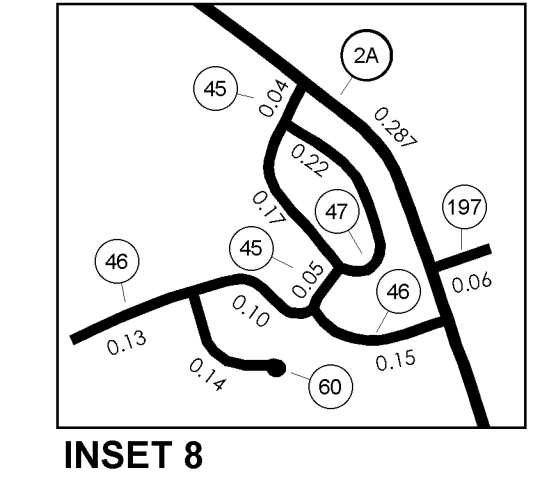
**TOTAL, TRAVELED HIGHWAYS, FEB. 10, 2008: 110.694**  
(Excludes Class 4 and Legal Trail Mileage)



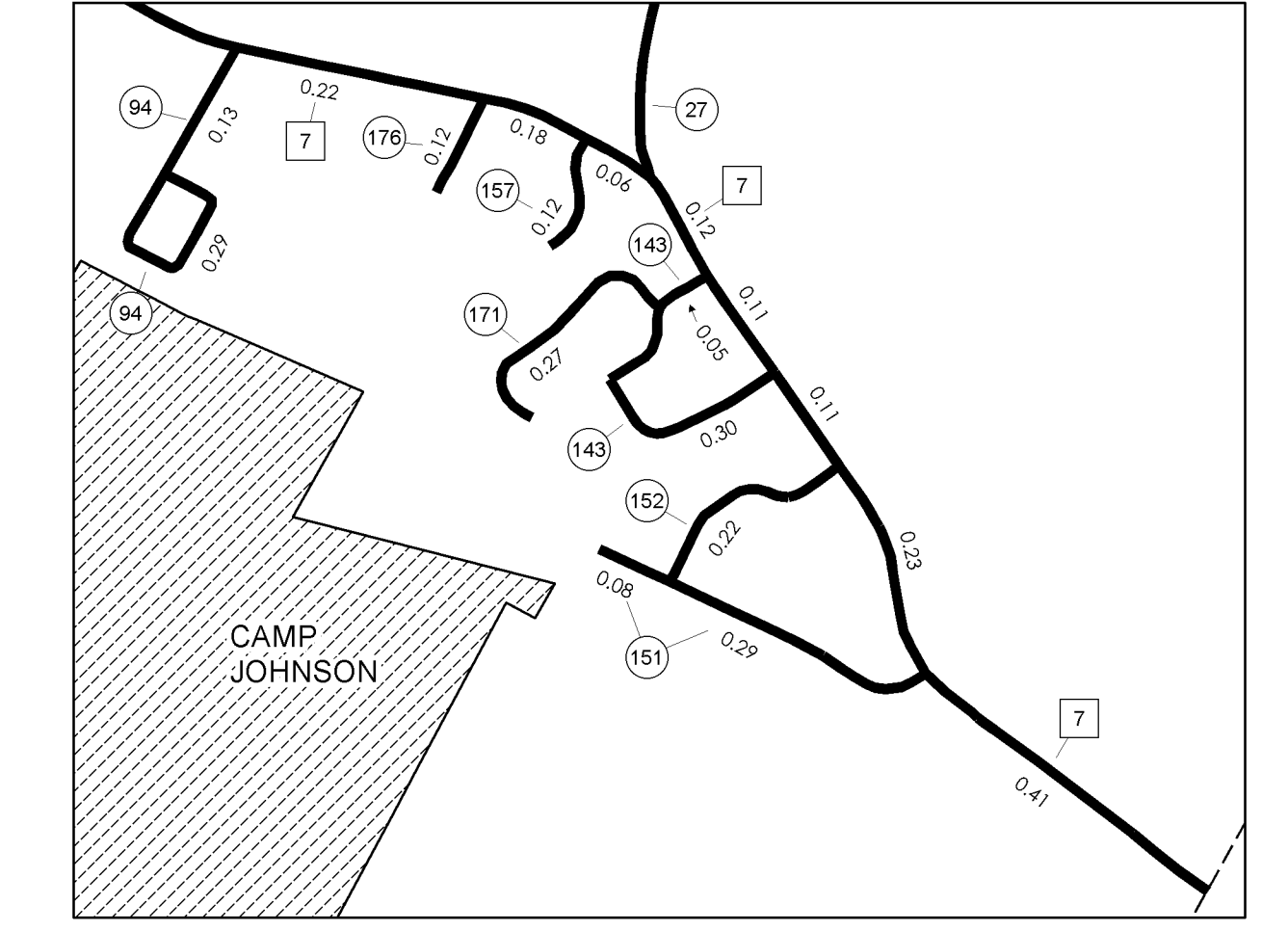
INSET 10



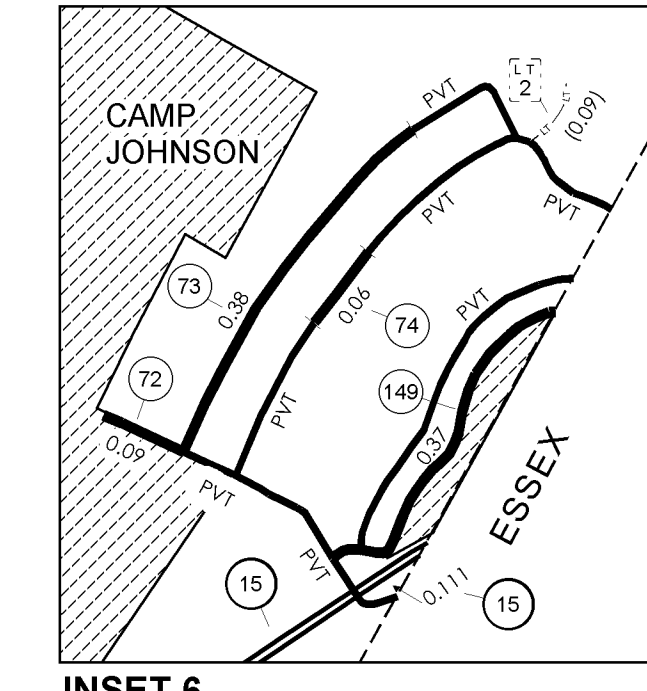
INSET 9



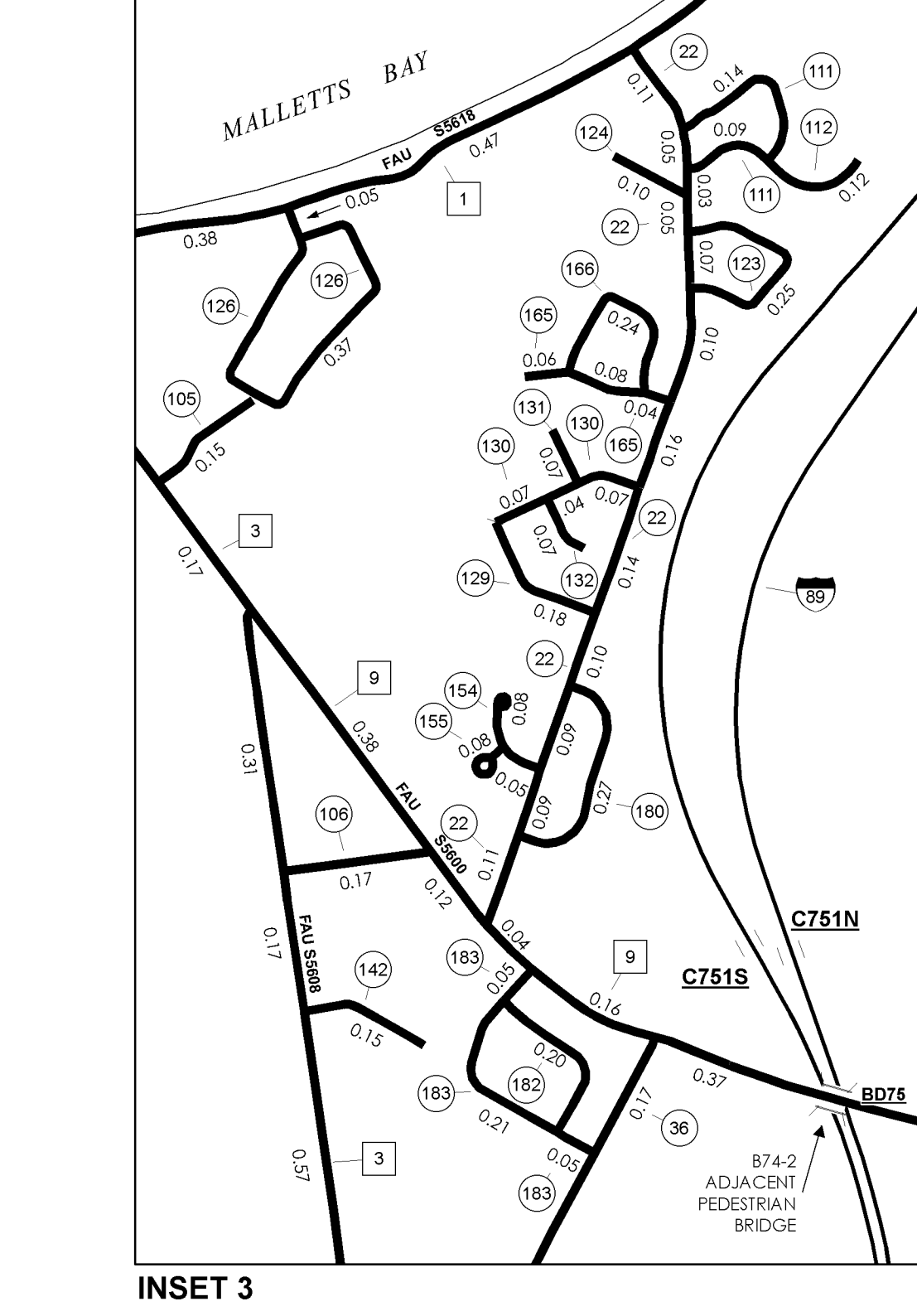
INSET 8



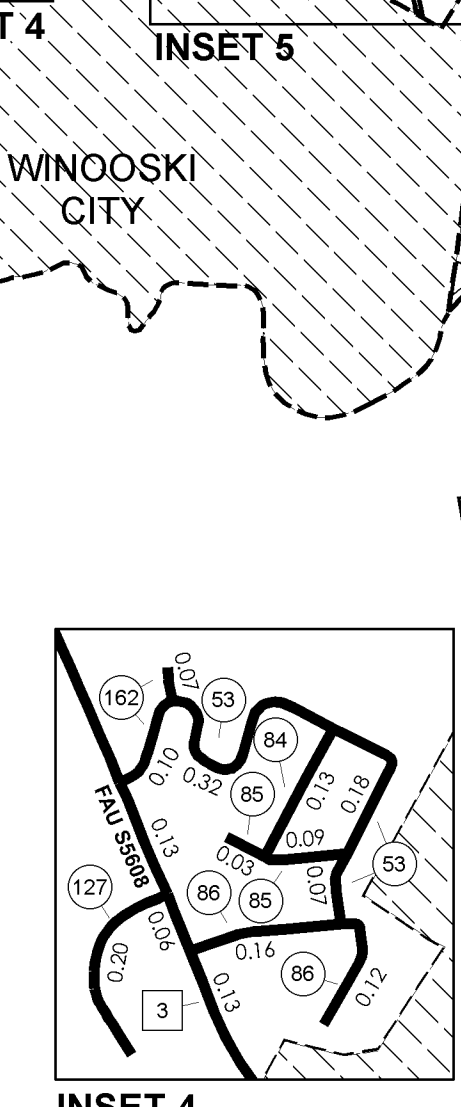
INSET 7



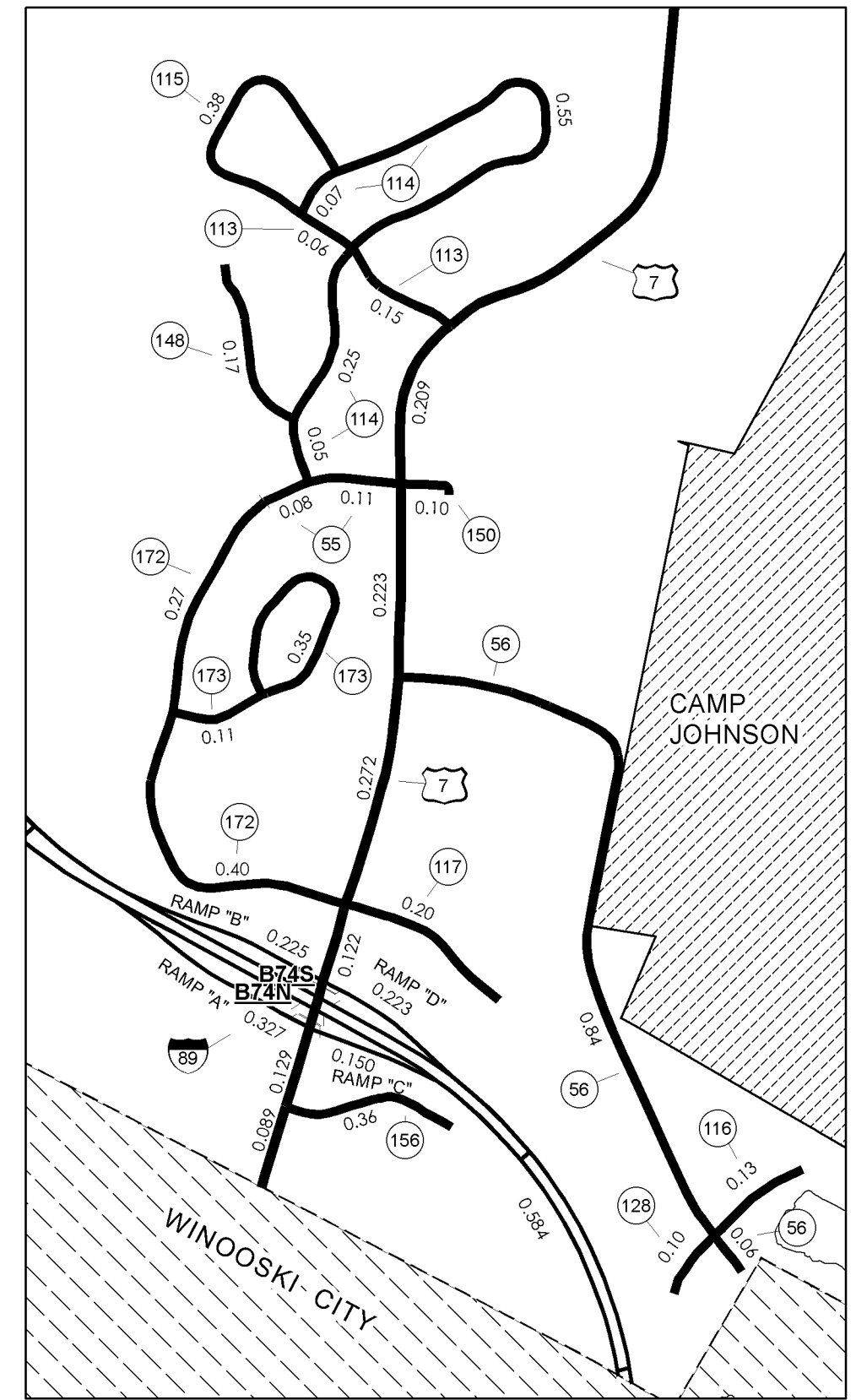
INSET 6



INSET 3



INSET 4

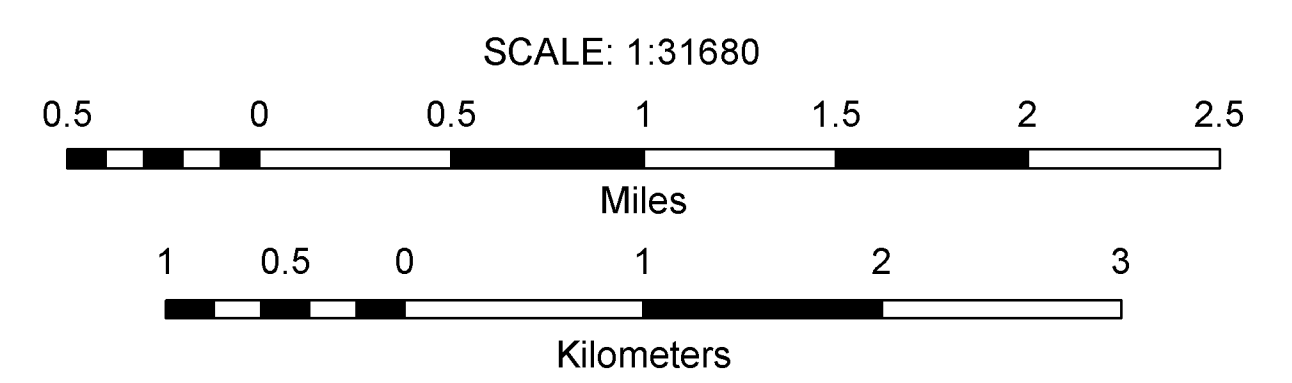


INSET 5

**VERMONT**  
**GENERAL HIGHWAY MAP**  
**Town of Colchester**  
CHITTENDEN COUNTY  
Transportation District #5

Prepared by the  
Vermont Agency of Transportation  
Policy & Planning Division  
in cooperation with  
U.S. Department of Transportation  
Federal Highway Administration

Mileage as of February 10, 2008  
Map generated: September, 2008



Vermont State Plane Coordinate System  
North American Datum of 1983  
SPCS3 Zone Identifier 4000  
Geodetic Reference System 80  
4,000-meter grid, Easting - Northing