

INSET 1

SCALE: 1:12000 -- scale for insets (unless otherwise noted)



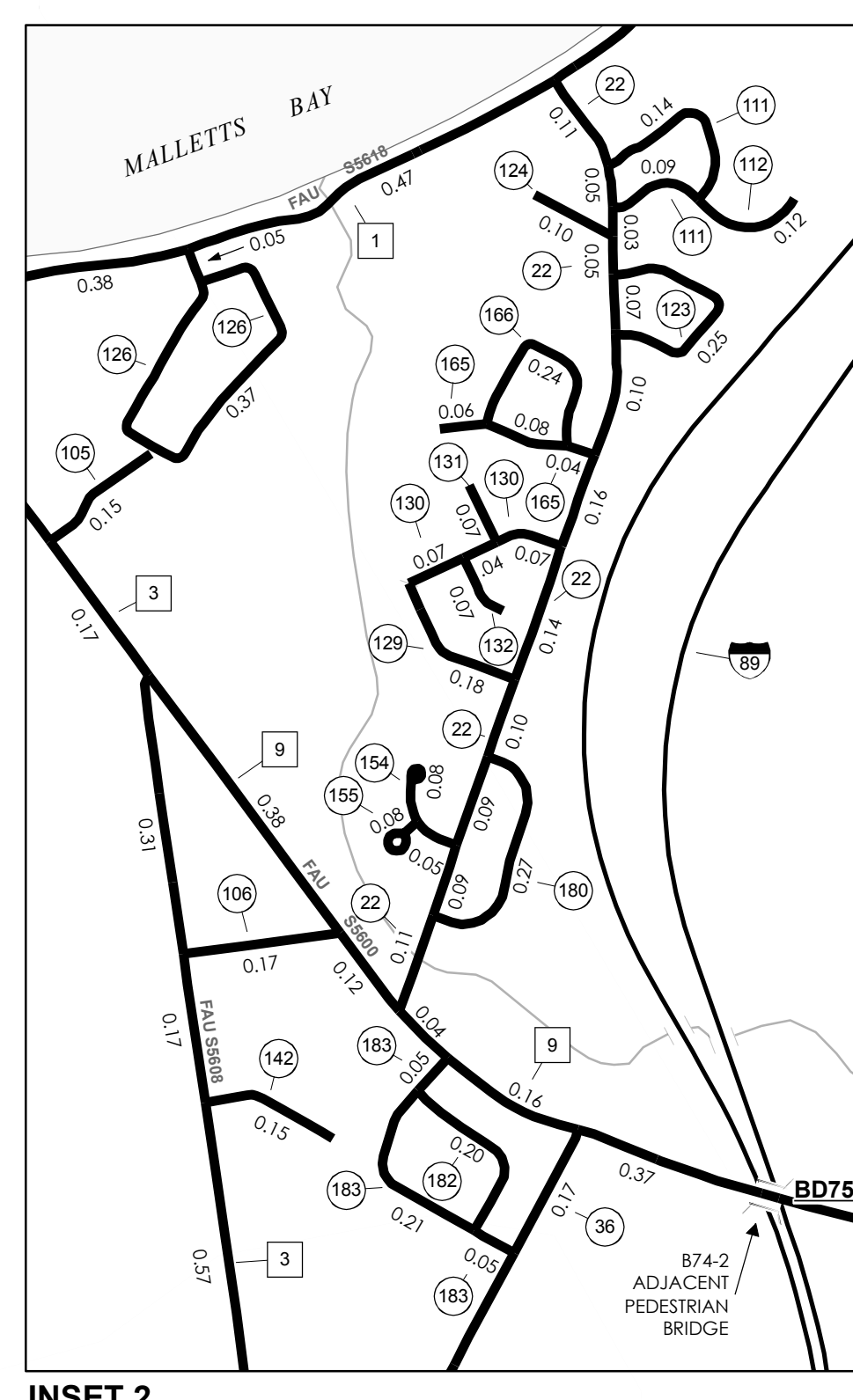
TOWN HWY. CLASS NO.	LENGTH IN MILES	CLASS 3	CLASS 4
9	0.650	73	0.380
10	1.030	74	0.060
11	0.600	75	0.120
12	3.050	76	0.430
13	0.600	77	0.280
14	0.350	78	0.040
15	0.400	79	0.190
16	1.310	80	0.250
17	0.900	81	0.560
18	0.830	82	0.060
18	0.830	83	0.260
19	0.110	84	0.130
20	0.640	85	0.120
21		86	0.280
22	1.100	87	0.770
24	0.130	88	0.100
25	1.050	89	0.100
26	0.380	90	0.380
27	1.800	91	0.450
28	0.310	92	0.120
30	1.850	93	0.110
31	2.000	94	0.420
32	0.480	95	0.470
34	0.800	96	0.110
35	1.080	97	0.380
36	0.570	98	0.100
37	0.980	99	0.430
39	0.200	100	0.190
40	0.500	101	0.100
41	0.050	102	0.160
42	0.770	103	1.310
43	0.550	104	0.310
44	0.140	105	0.150
45	0.260	106	0.170
46	0.380	107	0.210
47	0.220	108	0.240
48	0.930	109	0.090
49	0.160	110	0.170
50	0.050	111	0.230
51	0.390	112	0.120
52	0.580	113	0.210
53	0.570	114	0.920
54	0.260	115	0.380
55	0.190	116	0.130
56	0.900	117	0.200
57	1.400	118	0.500
58	1.620	119	0.090
59	0.340	120	0.050
60	0.140	121	0.090
61	0.660	122	0.150
62	0.050	123	0.250
63	0.360	124	0.100
64	0.350	125	0.100
65	0.210	126	0.420
66	0.190	127	0.200
67	0.440	128	0.100
68	0.300	129	0.180
69	0.180	130	0.160
70	0.250	131	0.070
71	0.370	132	0.070
72	0.090	133	0.130
		134	0.300
		135	0.650
		136	0.060
		137	0.140
		138	0.090
		139	0.090
		140	0.130
		141	0.080
		142	0.150
		143	0.150
		144	0.200
		145	0.210
		146	0.130
		147	0.060
		148	0.170
		149	0.370
		150	0.100
		151	0.370
		152	0.220
		153	0.500
		154	0.130
		155	0.080
		156	0.360
		157	0.120
		158	0.280
		159	0.400
		160	0.550
		161	0.200
		162	0.170
		163	0.140
		164	0.180
		165	0.180
		166	0.240
		167	0.430
		168	0.080
		169	0.140
		170	0.220
		171	0.270
		172	0.870
		173	0.460
		174	0.060
		175	0.640
		176	0.120
		177	0.150
		178	0.220
		179	0.160
		180	0.270
		181	0.080
		182	0.180
		183	0.310
		184	0.190
		185	0.070
		186	0.320
		187	0.360
		188	0.150
		189	0.070
		190	0.070
		191	0.150
		192	0.120
		193	0.050
		194	0.180
		195	0.070
		196	0.100
		197	0.060
		TOTAL	65.610
		TOTAL	1.150

\* Portion of this town highway is Class 3, but is functionally Class 4 TOTAL 65.610 1.150

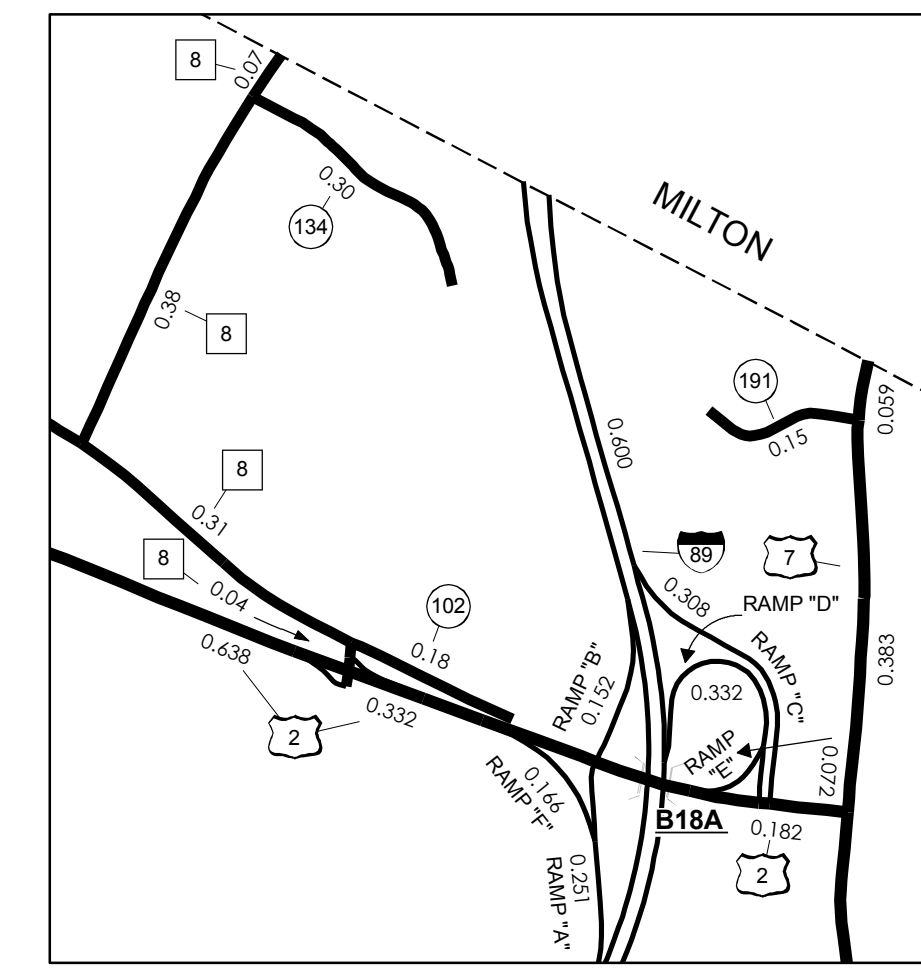
- HIGHWAYS
  - INTERSTATE
  - U.S. ROUTE
  - STATE ROUTE
  - CLASS 1
  - CLASS 2
  - CLASS 3
  - CLASS 4
- LEGAL TRAIL
  - INTERSTATE OR DIVIDED HIGHWAY
  - STATE - HARD SURFACE OR PAVED
  - TOWN - HARD SURFACE OR PAVED
  - GRAVEL
  - SOIL OR GRADED AND DRAINED EARTH
  - UNIMPROVED OR PRIMITIVE
  - IMPASSABLE OR UNTRAVELED
  - LEGAL TRAIL
  - DISCONTINUED
  - HIGHWAY CLASS CHANGE
  - RAILROAD
- PUBLIC LAND
- POLITICAL SUBDIVISIONS
  - STATE BOUNDARY
  - COUNTY BOUNDARY
  - TOWN BOUNDARY
  - VILLAGE BOUNDARY
  - URBAN COMPACT BOUNDARY
- WATER BODIES
  - OPEN WATER
  - SWAMP
  - STREAM OR BROOK
- BRIDGE OR CULVERT
  - BRIDGE OR CULVERT GREATER THAN 20'
  - BRIDGE OR CULVERT 6' - 20'
  - B34 STATE BRIDGE IDENTIFIER
  - B34 TOWN BRIDGE IDENTIFIER
- FEDERAL CLASSIFICATION IDENTIFIER
  - FAU URBAN ARTERIAL OR COLLECTOR
  - MA MINOR ARTERIAL
  - MJC MAJOR COLLECTOR
  - MNC MINOR COLLECTOR
  - PA PRINCIPAL ARTERIAL

LEGAL TRAIL NO.	LENGTH IN MILES
1	(0.390)
2	(0.090)
TOTAL	0.480

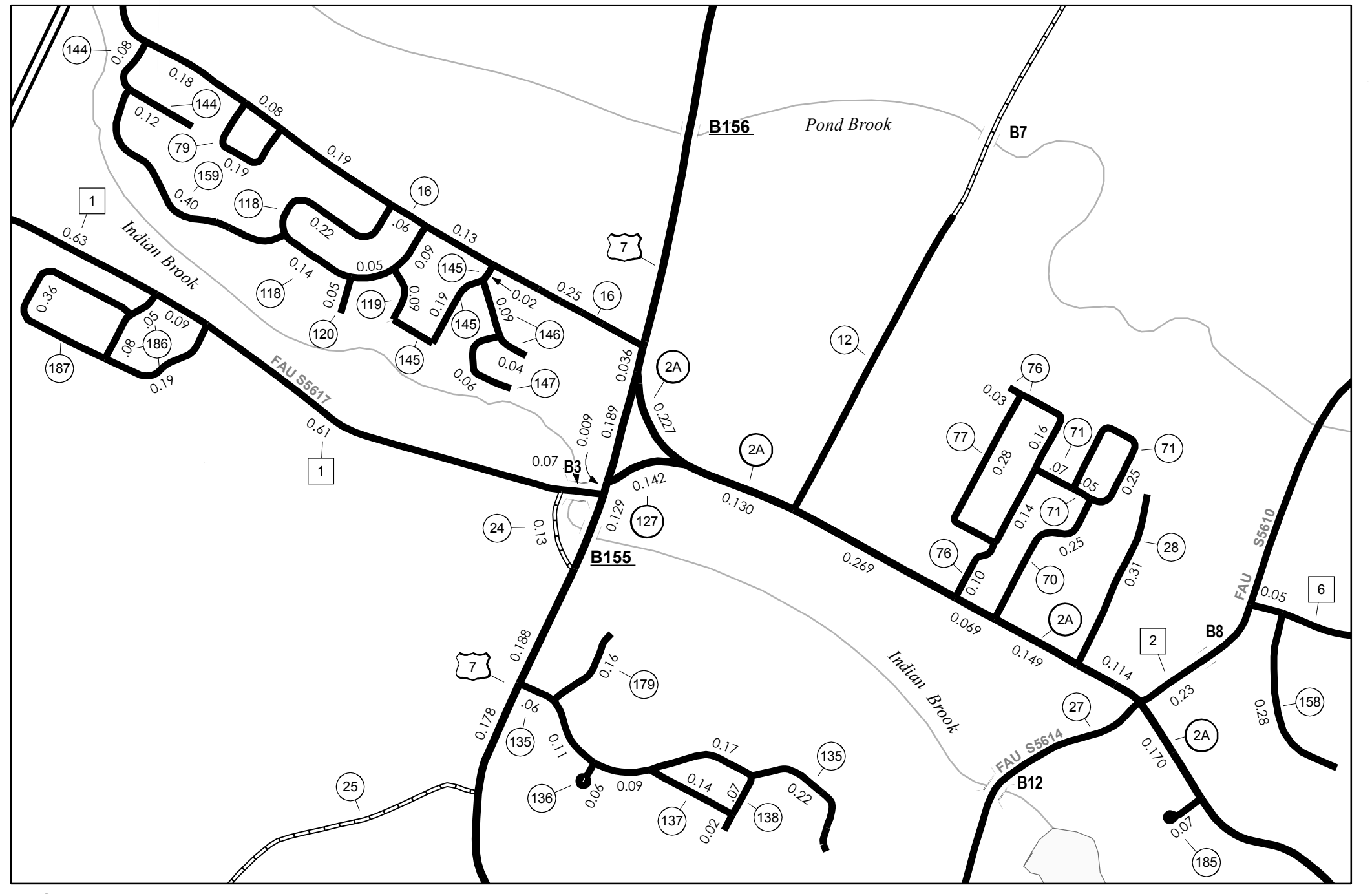
CLASS	LENGTH IN MILES
CLASS 2	6.680
TH-1	2.960
TH-2	3.440
TH-3	0.210
TH-4	0.750
TH-5	0.750
TH-6	0.800
TH-7	2.030
TH-8	0.800
TH-9	2.200
TH-10	1.300
TOTAL CLASS 2	21.120
CLASS 3	65.610
TOTAL CLASS 3	65.610
TOTAL TOWN	86.730
STATE HIGHWAY	2.431
VT-2A	1.361
VT-15	0.142
VT-127	0.142
TOTAL STATE HIGHWAY	3.934
US HIGHWAY	2.196
US-2	6.960
US-7	0.142
TOTAL US HIGHWAY	9.156
TOTAL STATE	13.090
INTERSTATE	7.568
I-89	7.568
TOTAL INTERSTATE	7.568
INTERSTATE - Ramp	2.206
I-89	2.206
TOTAL INTERSTATE - Ramp	2.206
TOTAL INTERSTATE	9.774
TOTAL, TRAVELED HIGHWAYS, FEB. 10, 2007:	109.594
(Excludes Class 4 and Legal Trail Mileage)	



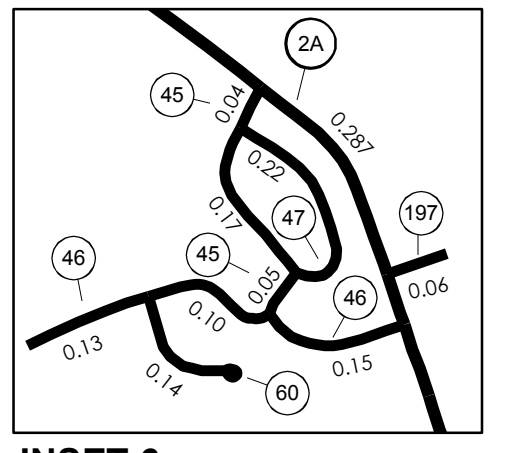
INSET 2



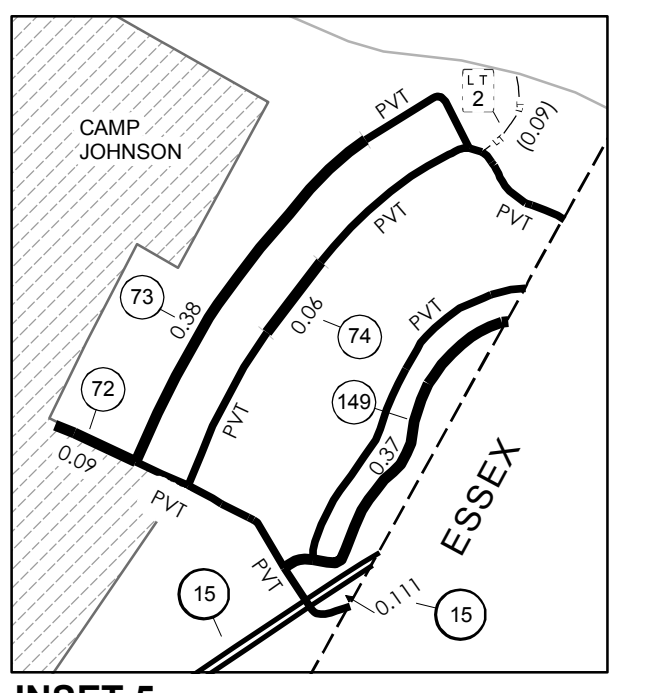
INSET 8



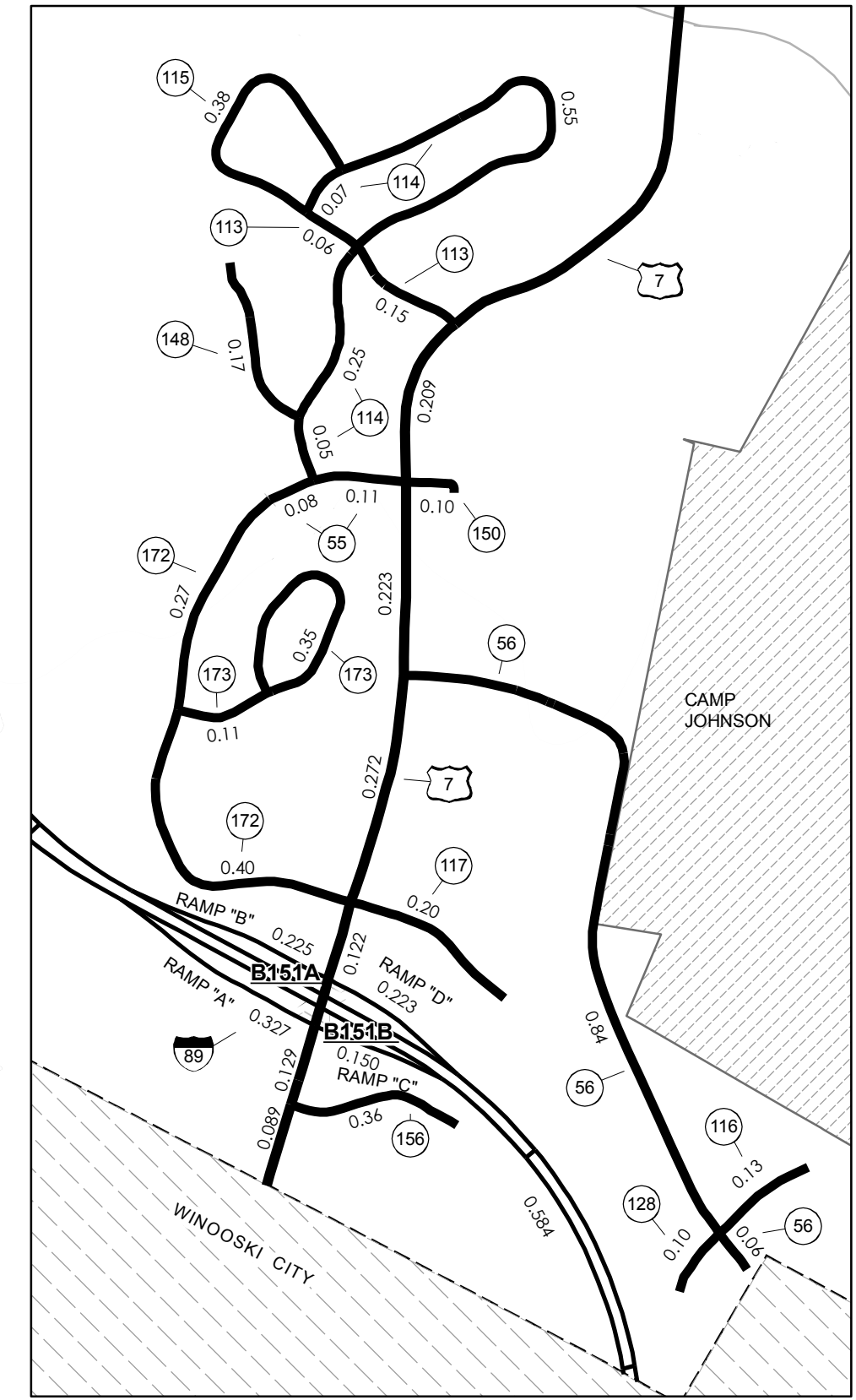
INSET 7



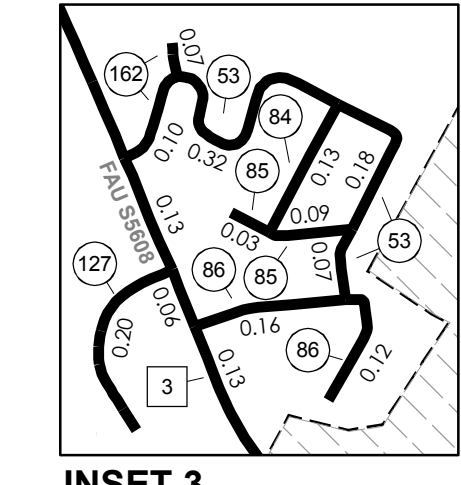
INSET 6



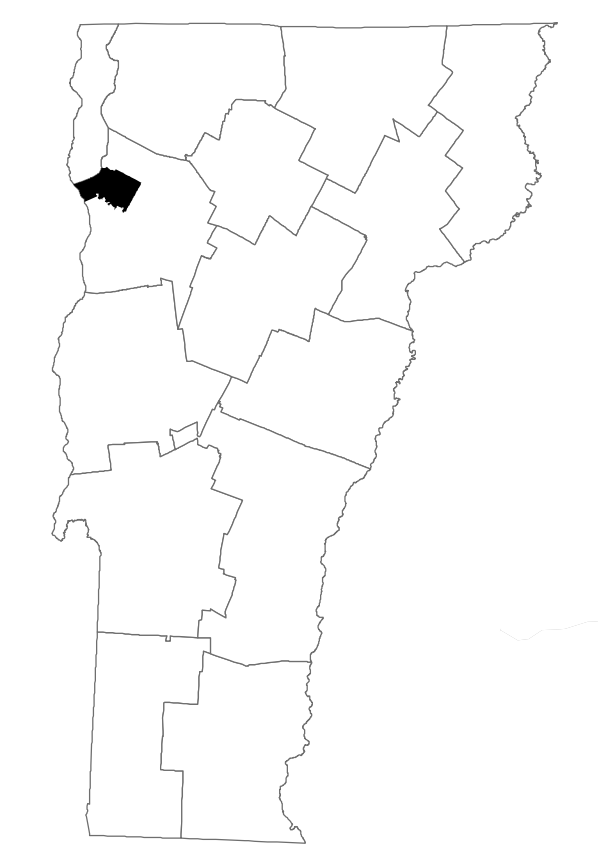
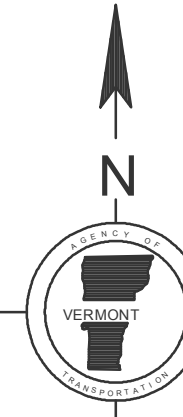
INSET 5



INSET 4



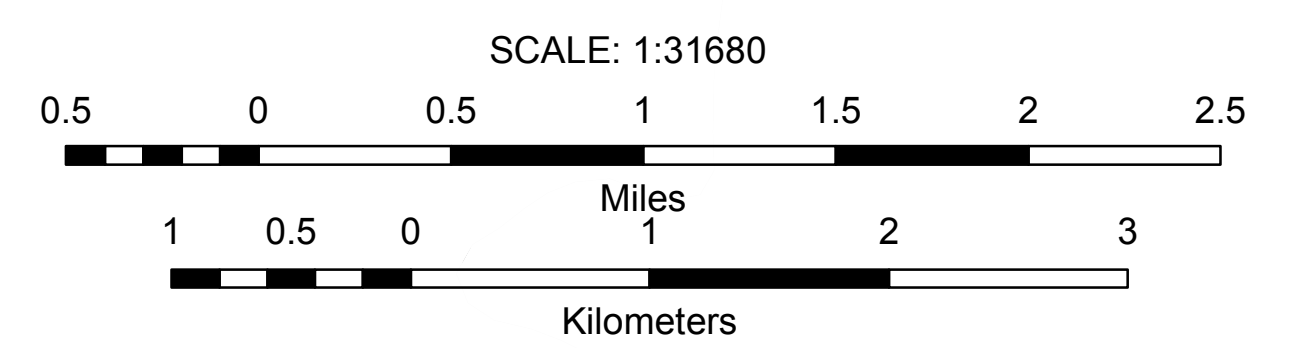
INSET 3



VERMONT  
GENERAL HIGHWAY MAP  
**Town of Colchester**  
CHITTENDEN COUNTY  
Transportation District #5

Prepared by the  
Vermont Agency of Transportation  
Policy & Planning Division  
in cooperation with  
U.S. Department of Transportation  
Federal Highway Administration

Mileage as of: Feb. 10, 2007  
Map generated: October, 2007



Vermont State Plane Coordinate System  
North American Datum of 1983  
SPCS Zone Identifier: 4400  
Geoidetic Reference System 80  
4,000-meter grid, Easting - Northing