

TOWN HWY. NO.	LENGTH IN MILES CLASS 3	LENGTH IN MILES CLASS 4
8	1.63	
9	5.05	
10	0.19	
11	1.55	
12	2.50	
14	1.75	
15	0.35	
17	1.50	
18	1.01	
19	0.26	
20	0.07	(0.20)
21	3.30	
22	1.40	
23	0.65	
24	2.55	
25	0.15	
26	1.15	
27	1.00	
28	0.10	
29	0.73	
30	0.10	
31	1.30	
32	1.14	
33	0.39	
34	0.30	
35	2.65	
36	0.60	
37	1.60	
38	0.23	(0.17)
39	1.65	
40	0.12	
41	0.30	
42	0.38	
43	0.76	
44	1.50	
45	0.25	
46	1.18	
47	0.16	
48	0.07	
49	0.74	
50	0.05	
51	0.15	
TOTAL	42.61	0.37

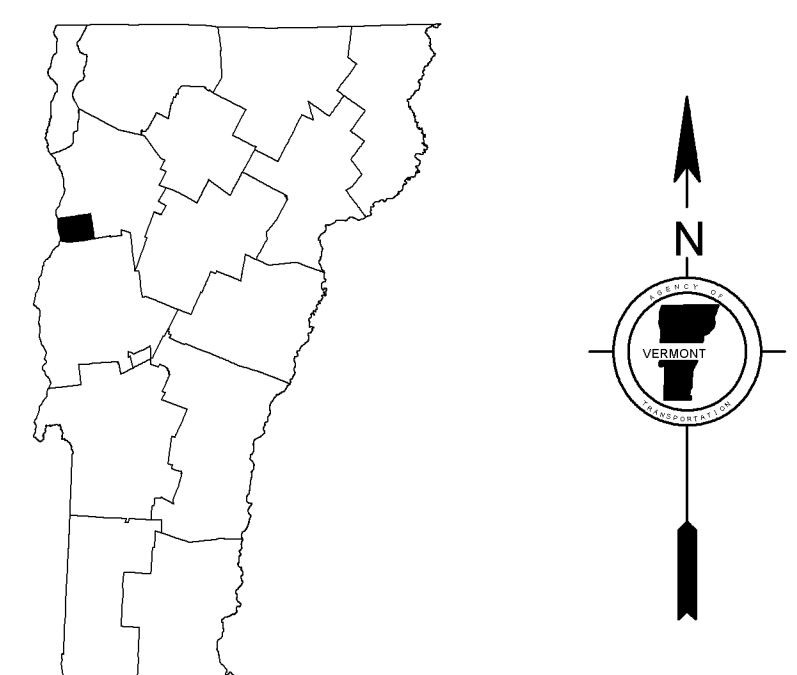
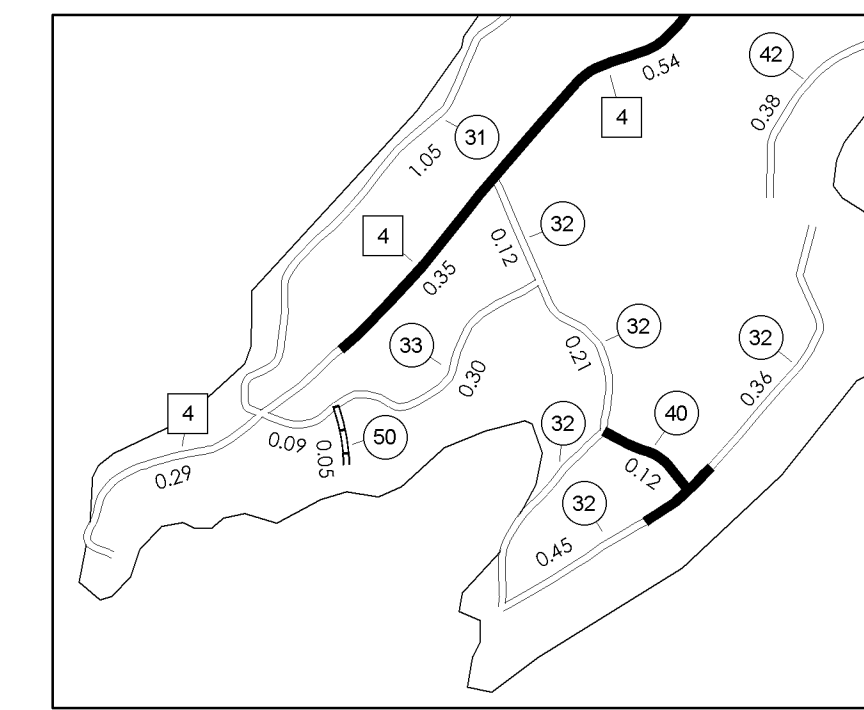
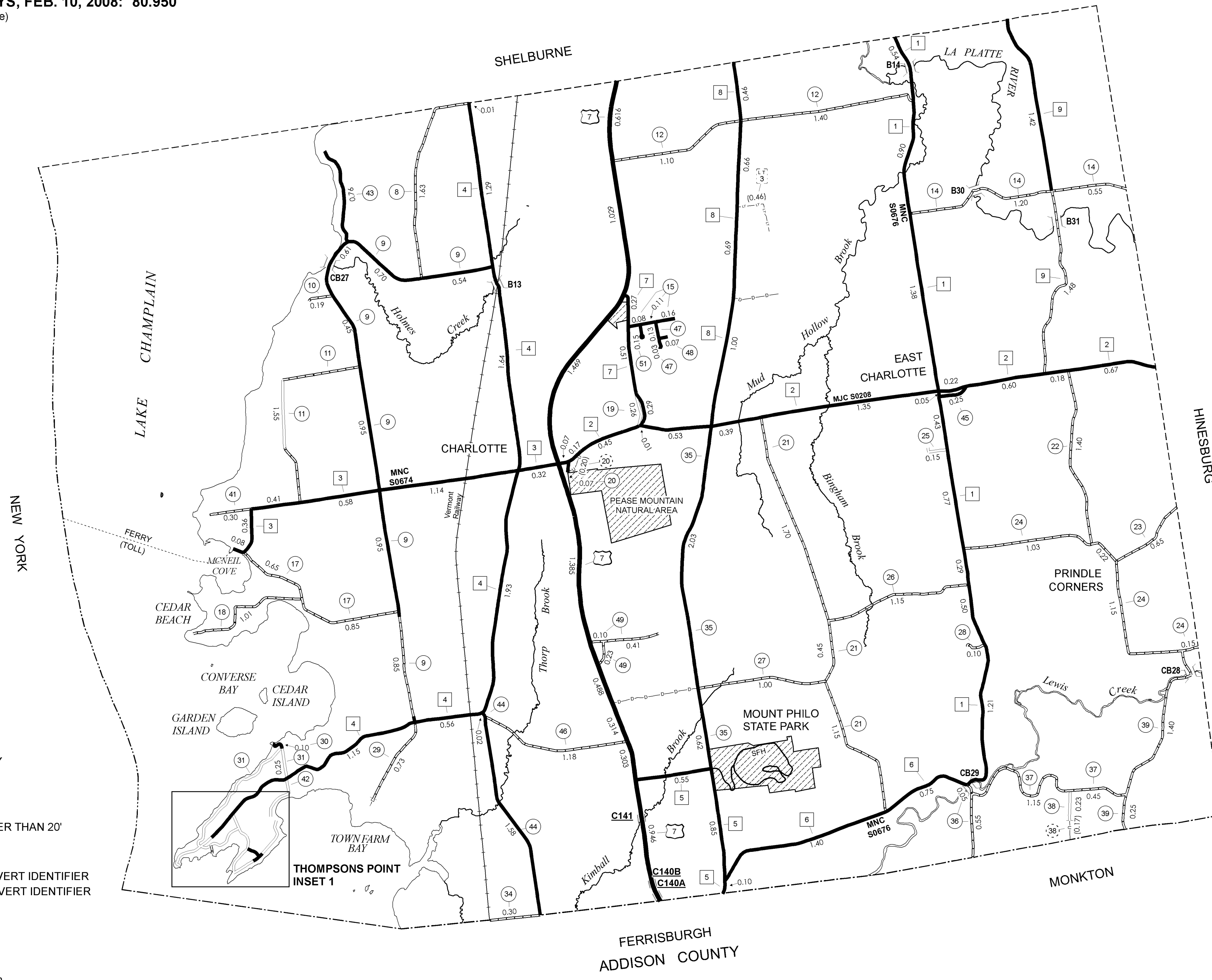
MILEAGE SUMMARY		
CLASS 2		
TH-1	6.070	
TH-2	4.640	
TH-3	2.890	
TH-4	7.760	
TH-5	1.500	
TH-6	2.150	
TH-7	1.070	
TH-8	2.810	
TH-9	2.900	
TOTAL CLASS 2	31.790	
CLASS 3		
TOTAL CLASS 3	42.610	
TOTAL TOWN	74.400	
US HIGHWAY		
US-7	6.550	
TOTAL US HIGHWAY	6.550	
TOTAL STATE	6.550	

TOTAL, TRAVELED HIGHWAYS, FEB. 10, 2008: 80.950
(Excludes Class 4 and Legal Trail Mileage)

LEGAL TRAIL NO.	LENGTH IN MILES
3	(0.46)
TOTAL	0.46

- HIGHWAYS**
- INTERSTATE
 - U.S. ROUTE
 - STATE ROUTE
 - CLASS 1
 - CLASS 2
 - CLASS 3
 - CLASS 4
 - LEGAL TRAIL
 - INTERSTATE OR DIVIDED HIGHWAY
 - STATE - HARD SURFACE OR PAVED
 - TOWN - HARD SURFACE OR PAVED
 - STATE FOREST - HARD SURFACE
 - GRAVEL
 - SOIL OR GRADED AND DRAINED EARTH
 - UNIMPROVED OR PRIMITIVE
 - IMPASSABLE OR UNTRAVELED
 - LEGAL TRAIL
 - DISCONTINUED
 - HIGHWAY CLASS CHANGE
 - RAILROAD

- PUBLIC LAND
- POLITICAL SUBDIVISIONS**
- STATE BOUNDARY
- COUNTY BOUNDARY
- TOWN BOUNDARY
- VILLAGE BOUNDARY
- URBAN COMPACT BOUNDARY
- OPEN WATER
- STREAM OR BROOK
- BRIDGE OR CULVERT**
- BRIDGE OR CULVERT GREATER THAN 20'
- BRIDGE OR CULVERT 6' - 20'
- B34 / C34** STATE BRIDGE OR CULVERT IDENTIFIER
- B34 / C34** TOWN BRIDGE OR CULVERT IDENTIFIER
- FEDERAL CLASSIFICATION IDENTIFIER**
- FAU** URBAN ARTERIAL OR COLLECTOR
- MA** MINOR ARTERIAL
- MJC** MAJOR COLLECTOR
- MNC** MINOR COLLECTOR
- PA** PRINCIPAL ARTERIAL

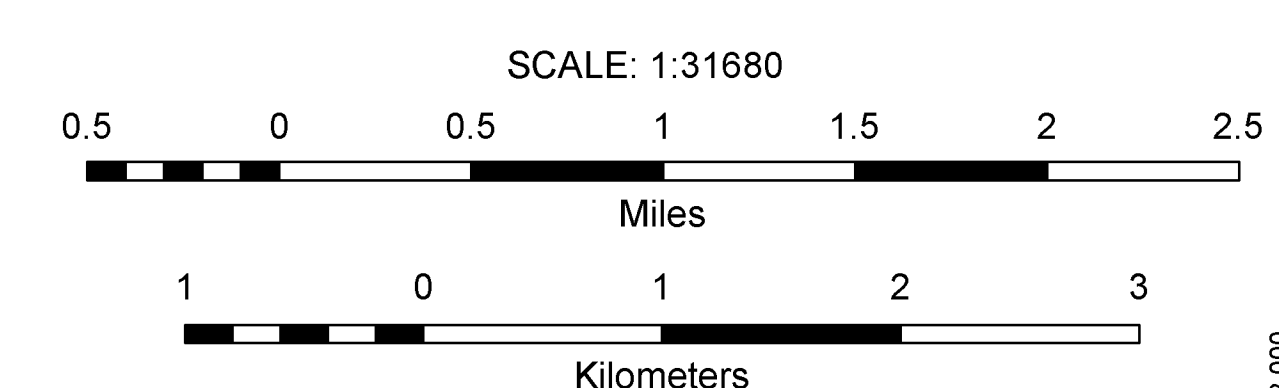


VERMONT GENERAL HIGHWAY MAP
Town of Charlotte
CHITTENDEN COUNTY

Transportation District #5

Prepared by the
Vermont Agency of Transportation
Policy & Planning Division
in cooperation with
U.S. Department of Transportation
Federal Highway Administration

Mileage as of: February 10, 2008
Map generated: September, 2008



DISCLAIMER:
The untraveled highways (laid-out town highways), discontinued highways, and legal trails shown hereon are those of which the Agency of Transportation has record; others may exist.
Highway and bridge data by the Agency of Transportation, Policy & Planning Division. All other data from the Vermont Center for Geographic Information.

STRUCTURES - SURFACE WATER NOTE:
Town short structures (bridges or culverts from 6-feet to less than 20-feet) were not represented due to inconsistencies in the data.
The surface waters are from the Vermont Hydrological Dataset (VHD). Only the named streams are shown.

Vermont State Plane Coordinate System
North American Datum of 1983
SPCS_Zone_Identifier: 4400
Geodetic Reference System 80
4,000-meter grid, Easting - Northing

