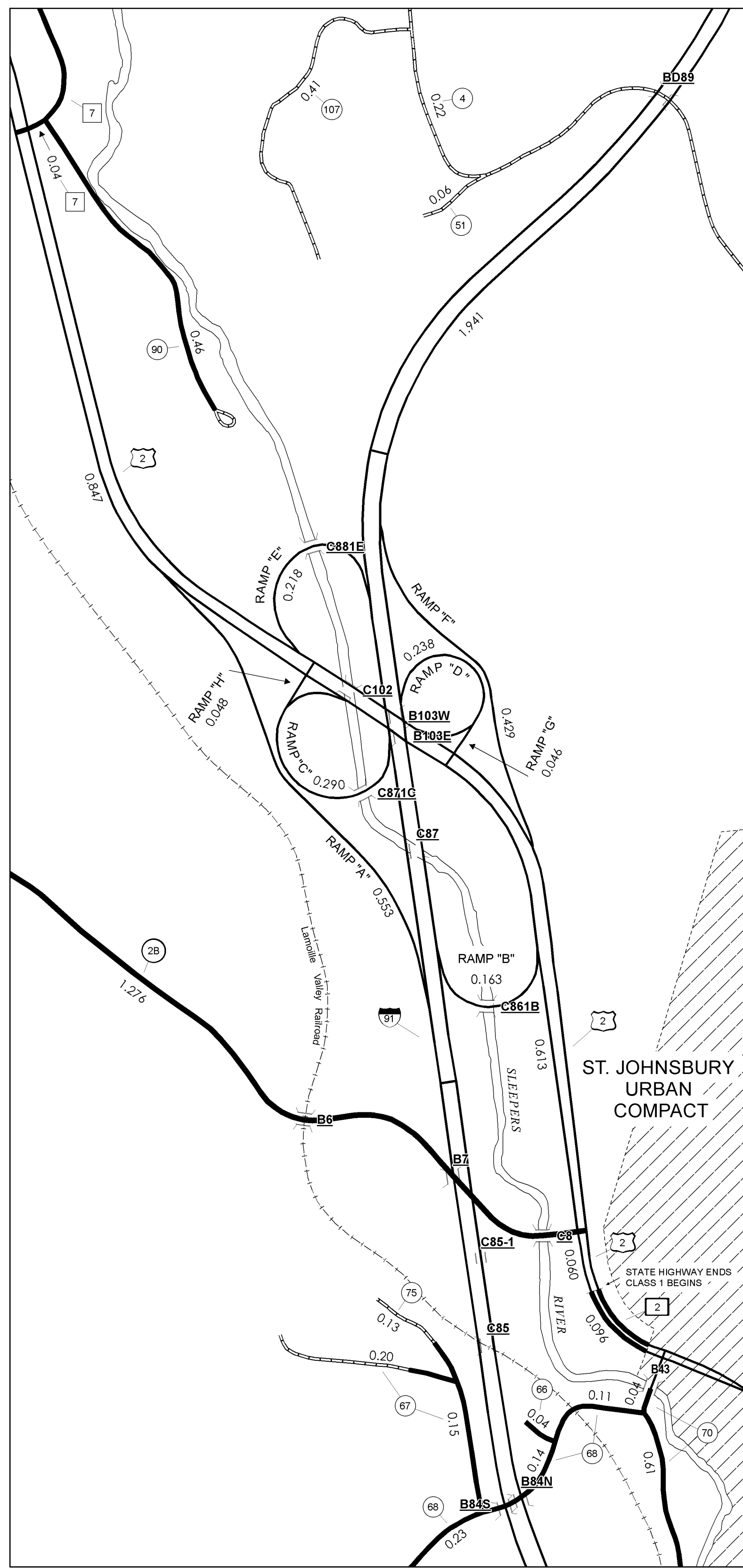


TOWN HWY. NO.	LENGTH IN MILES CLASS 3	LENGTH IN MILES CLASS 4
4	2.78	0.44
5	3.20	0.28
6	1.14	0.05
7	0.06	0.12
8	0.54	0.14
9	0.65	0.04
10	3.84	0.05
11	1.00	0.35
12	0.67	0.19
13	0.55	0.19
14	2.47	0.04
15	1.23	0.09
16	1.48	0.33
17	0.15	0.11
18	0.46	0.51
19	0.24	0.15
20	2.87	0.06
21	0.22	0.21
22	0.07	0.03
23	0.21	0.07
24	0.35	0.12
25	0.15	0.16
26	0.08	0.08
27	0.80	0.19
28	1.13	0.17
29	0.33	0.33
30	1.45	0.03
31	0.35	0.05
32	0.64	0.15
33	0.13	0.06
34	0.15	0.25
35	0.16	0.23
36	0.12	0.03
37	3.18	0.07
38	0.17	0.18
39	0.43	0.26
40	0.64	0.05
41	0.19	0.14
42	0.25	0.14
43	0.13	0.03
44	1.10	0.21
45	0.17	0.04
46	0.52	0.08
47	0.08	0.32
48	0.32	0.09
49	1.18	0.05
50	0.23	0.09
51	0.06	0.36
52	1.84	0.06
53	1.38	0.06
54	1.47	0.10
56	0.34	0.07
57	0.18	0.13
58	0.10	0.15
59	0.20	0.25
60	0.29	0.10
61	0.29	0.08
62	0.26	0.17
66	0.04	0.09
67	0.35	0.09
68	1.23	0.77
69	0.88	0.04
70	0.65	0.07
71	0.12	0.29
73	1.83	0.70
74	0.14	0.03
75	0.13	0.20
76	0.37	0.22
77	1.34	0.05
78	0.11	0.32
79	0.06	0.08
80	1.37	0.06
81	0.25	0.06
82	0.04	0.09
83	0.05	0.10
85	0.16	0.23
86	1.16	0.33
87	0.93	0.24
90	0.46	0.24
91	0.32	0.04
92	0.01	0.17
93	0.17	0.05
96	0.09	0.06
97	0.08	0.15
98	0.24	0.07
99	0.15	0.08
100	0.12	0.18
101	0.18	0.19
102	0.15	0.06
103	0.18	0.11
104	0.02	0.06
105	0.06	0.12
106	0.14	0.33
107	0.41	0.06
108	0.89	0.10
109	0.10	0.20
110	0.08	0.06
302	0.48	0.09
304	0.40	0.05
306	0.71	0.05
308	0.05	0.37
310	0.32	0.11
312	0.13	0.08
312	0.11	0.15
314	0.27	0.67
316	0.27	0.10
318	0.11	0.03
320	0.03	0.20
322	0.07	0.06
324	0.23	0.29
326	0.19	0.17
328	0.13	0.05
330	0.03	0.25
332	0.08	0.58
334	0.21	0.08
336	0.03	0.02
338	0.30	0.06
340	0.08	0.12
342	0.04	0.17

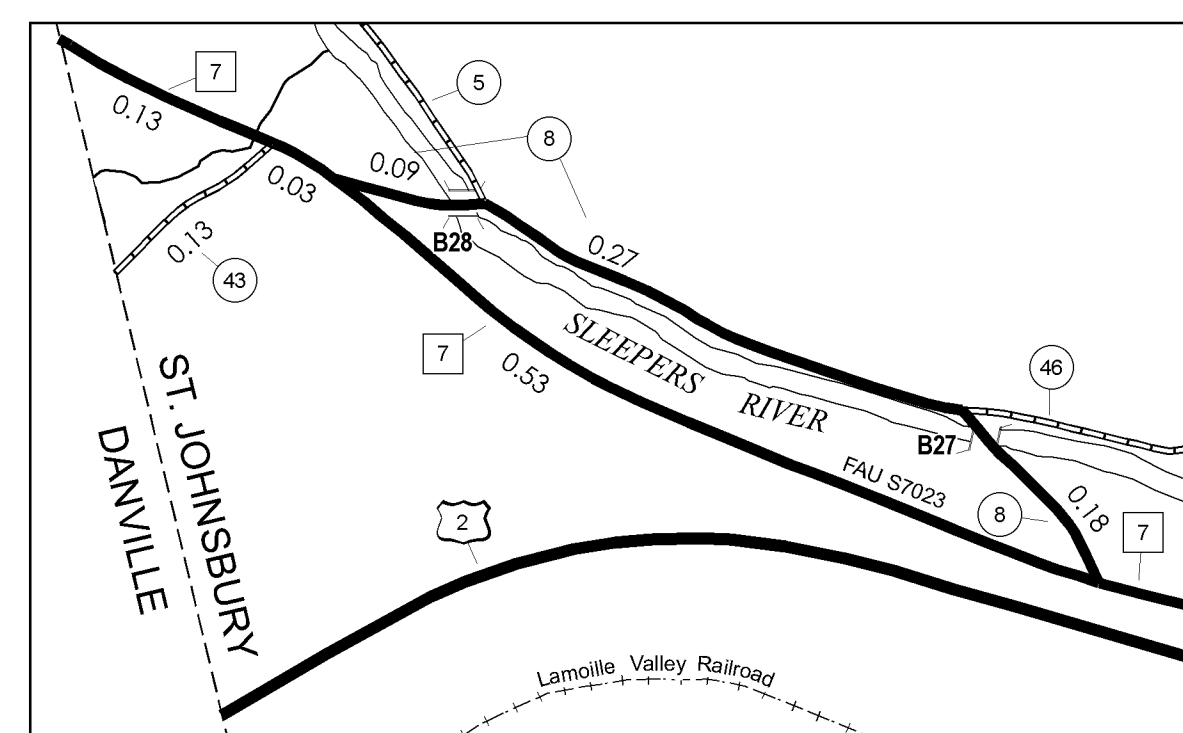
TOTAL 82.07 2.44
 * This portion of town highway is Class 3, but is functionally Class 4

LEGAL TRAIL NO.	LENGTH IN MILES
1	(0.07)
TOTAL	0.07

- HIGHWAYS**
- INTERSTATE OR DIVIDED HIGHWAY
 - STATE - HARD SURFACE
 - TOWN - HARD SURFACE OR PAVED
 - PRIVATE - HARD SURFACE
 - GRAVEL
 - SOIL OR GRADED AND DRAINED EARTH
 - UNIMPROVED OR PRIMITIVE
 - IMPASSABLE OR UNTRAVELED
 - LEGAL TRAIL
 - DISCONTINUED
 - RAILROAD
 - HIGHWAY CLASS CHANGE
 - INACTIVE RAILROAD
- PUBLIC LAND**
- STATE BRIDGE OR CULVERT IDENTIFIER
 - TOWN BRIDGE OR CULVERT IDENTIFIER
- FEDERAL CLASSIFICATION IDENTIFIER**
- FAU URBAN ARTERIAL OR COLLECTOR
 - MA MINOR ARTERIAL
 - MJC MAJOR COLLECTOR
 - MNC MINOR COLLECTOR
 - PA PRINCIPAL ARTERIAL
- POLITICAL SUBDIVISIONS**
- STATE BOUNDARY
 - COUNTY BOUNDARY
 - TOWN BOUNDARY
 - VILLAGE BOUNDARY
 - URBAN COMPACT BOUNDARY
 - OPEN WATER
 - STREAM OR BROOK
 - BRIDGE OR CULVERT
 - BRIDGE OR CULVERT GREATER THAN 20'
 - BRIDGE OR CULVERT 6' - 20'

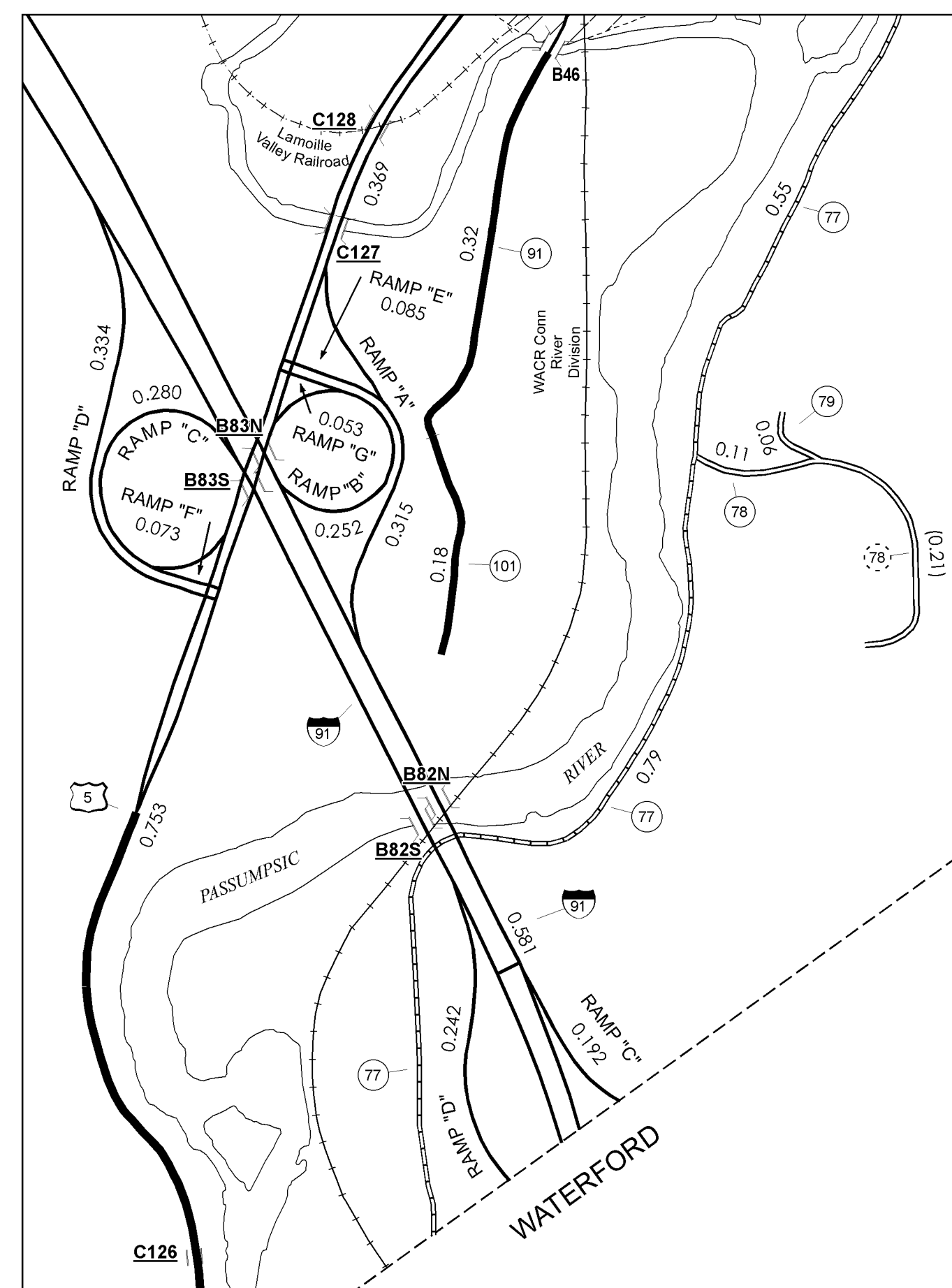


INSET 2 SCALE 1:6336



INSET 1 SCALE 1:6336

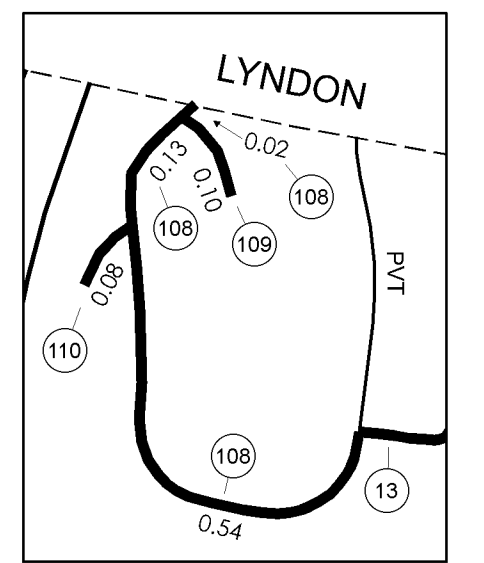
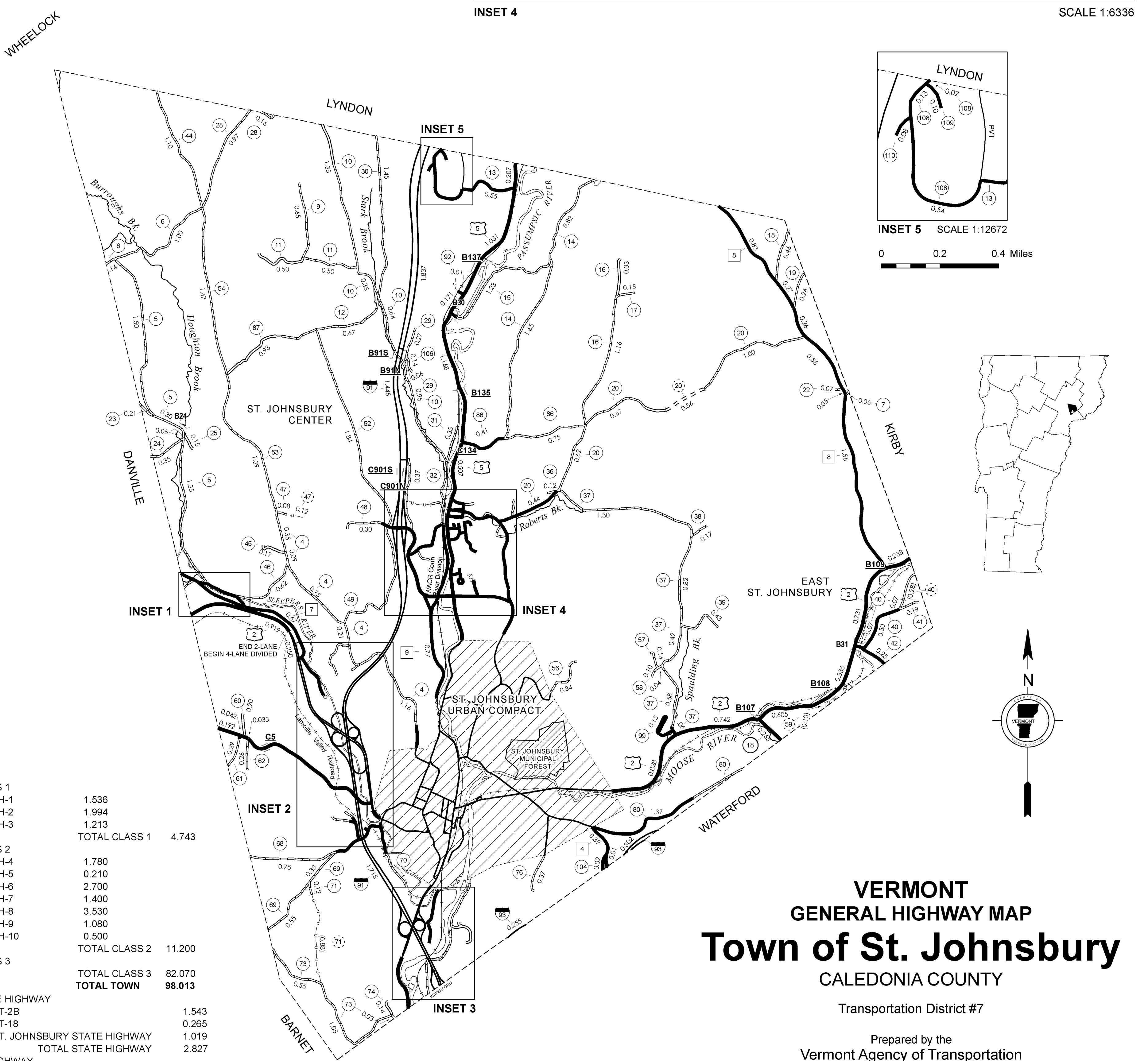
SCALE FOR INSETS 1:6336 UNLESS OTHERWISE NOTED



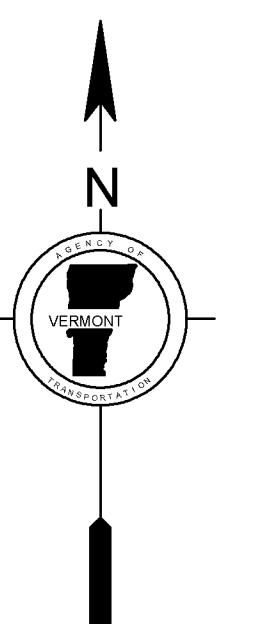
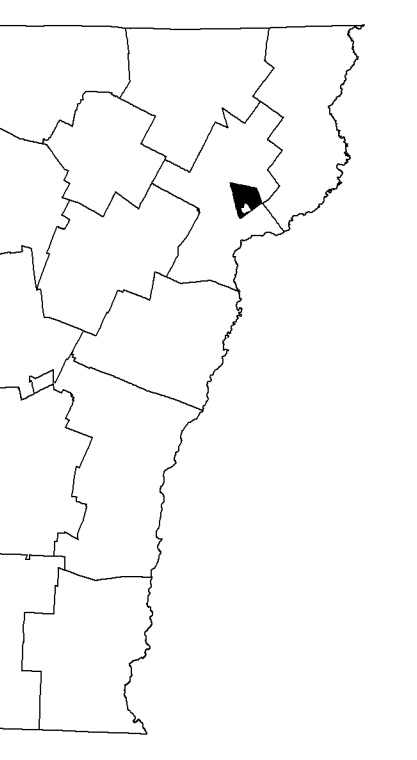
INSET 3 SCALE 1:6336



INSET 4 SCALE 1:6336



INSET 5 SCALE 1:12672



CLASS	LENGTH IN MILES
CLASS 1	1.536
TH-1	1.994
TH-2	1.213
TH-3	1.213
TOTAL CLASS 1	4.743
CLASS 2	1.780
TH-4	0.210
TH-5	2.700
TH-6	2.700
TH-7	1.400
TH-8	3.530
TH-9	1.080
TH-10	0.500
TOTAL CLASS 2	11.200
CLASS 3	82.070
TOTAL CLASS 3	82.070
TOTAL TOWN	98.013
STATE HIGHWAY	
VT-2B	1.543
VT-18	0.265
ST. JOHNSBURY STATE HIGHWAY	1.019
TOTAL STATE HIGHWAY	2.827
US HIGHWAY	
US-2	6.665
US-5	6.139
US-ALT5	0.107
TOTAL US HIGHWAY	12.911
TOTAL STATE	15.738
INTERSTATE	
I-91	7.519
I-93	0.557
TOTAL INTERSTATE	8.076
INTERSTATE - Ramp	
I-91	4.793
TOTAL INTERSTATE - Ramp	4.793
TOTAL INTERSTATE	12.869

TOTAL, TRAVELED HIGHWAYS, FEB. 10, 2008: 126.620
 (Excludes Class 4 and Legal Trail Mileage)

STRUCTURES - SURFACE WATER NOTE:
 Town short structures (bridges or culverts from 6-feet to less than 20-feet) were not represented due to inconsistencies in the data.
 The surface waters are from the Vermont Hydrological Dataset (VHD). Only the named streams are shown.

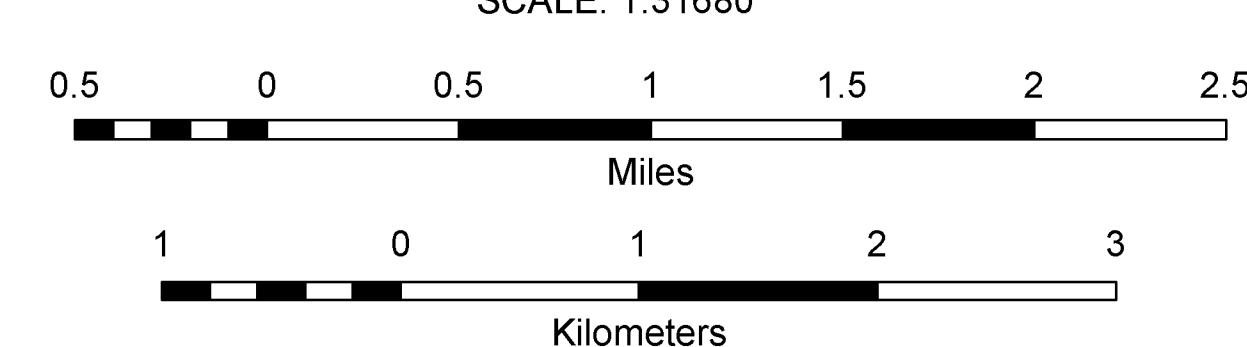
VERMONT GENERAL HIGHWAY MAP
Town of St. Johnsbury
 CALEDONIA COUNTY

Transportation District #7

Prepared by the Vermont Agency of Transportation Policy & Planning Division in cooperation with U.S. Department of Transportation Federal Highway Administration

Mileage as of February 10, 2008
 Map generated: September, 2008

SCALE: 1:31680



DISCLAIMER:
 The untraveled highways (laid-out town highways), discontinued highways, and legal trails shown hereon are those of which the Agency of Transportation has record; others may exist.
 Highway and bridge data by the Agency of Transportation, Policy & Planning Division. All other data from the Vermont Center for Geographic Information.

Vermont State Plane Coordinate System
 North American Datum of 1983
 SPCS Zone Identifier: 4400
 Geodetic Reference System 80
 4,000-meter grid, Easting - Northing