

TOWN HWY. No.	LENGTH IN MILES CLASS 3	LENGTH IN MILES CLASS 4	MILEAGE SUMMARY
6	4.64		CLASS 2
7	5.07		TH-1 4.910
8	1.86		TH-2 0.350
9	0.28		TH-3 0.180
10	0.22		TH-4 2.320
11	0.40		TH-5 1.730
12	0.18		TH-6 4.470
13		(0.97)	TOTAL CLASS 2 13.960
15	0.04		CLASS 3
16	0.75		TOTAL CLASS 3 43.24
17	0.71	(0.08)	TOTAL TOWN 57.200
18	3.60		US HIGHWAY
20	0.16		US-5 7.386
21	0.73		US-302 3.698
22	0.07		TOTAL US HIGHWAY 11.084
25	0.80		INTERSTATE
26	0.21		I-91 6.241
28	1.46	(0.68)	TOTAL INTERSTATE 6.241
29		(0.42)	TOTAL INTERSTATE 6.241
31	0.80		
32	0.77		
34	0.23		
37	0.94	(0.51)	
38	0.07		
39	0.35		
40	0.35		
41	0.34		
42	0.34		
43	0.30		
44	1.94		
45	0.73		
46	0.38		
47	0.16		
48	0.80	(0.25)	
49		(0.21)	
51	0.63		
52	0.16	(0.18)	
53	0.84	(0.76)	
54	0.32	(0.41)	
55		(0.46)	
56	0.30	(0.35)	
58	0.33	(0.20)	
60	0.31	(0.15)	
61	2.35	(0.50)	
63	0.82	(0.31)	
65	0.60	(0.41)	
66	0.55	(0.69)	
67	0.23	(1.10)	
68		(0.73)	
69		(2.63)	
70	0.02	(0.14)	
71	0.35	(0.16)	
72	0.17	(0.13)	
73	0.20		
74	0.20		
78	0.10		
80		(0.11)	
81	0.40		
82	0.08		
87	0.14		
88	0.29	(0.61)	
89	0.27		
90	0.40		
91	0.12		
92	1.01		
93	0.20		
300	0.10		
302	0.36		
304	0.16		
306	0.06		
308	0.61		
310	0.17	(0.06)	
312	0.04	(0.04)	
314	0.23	(0.19)	
318	0.30		
320	0.05		
322	0.07		
324	0.06		
TOTAL	43.24	6.66	

LEGAL TRAIL No.	LENGTH IN MILES LEGAL TRAIL
1	(0.18)
2	(0.76)
3	(0.41)
4	(0.46)
5	(0.35)
6	(0.20)
7	(0.15)
8	(0.50)
9	(0.31)
10	(0.41)
11	(0.69)
12	(1.10)
13	(0.73)
14	(2.63)
15	(0.14)
TOTAL	9.02

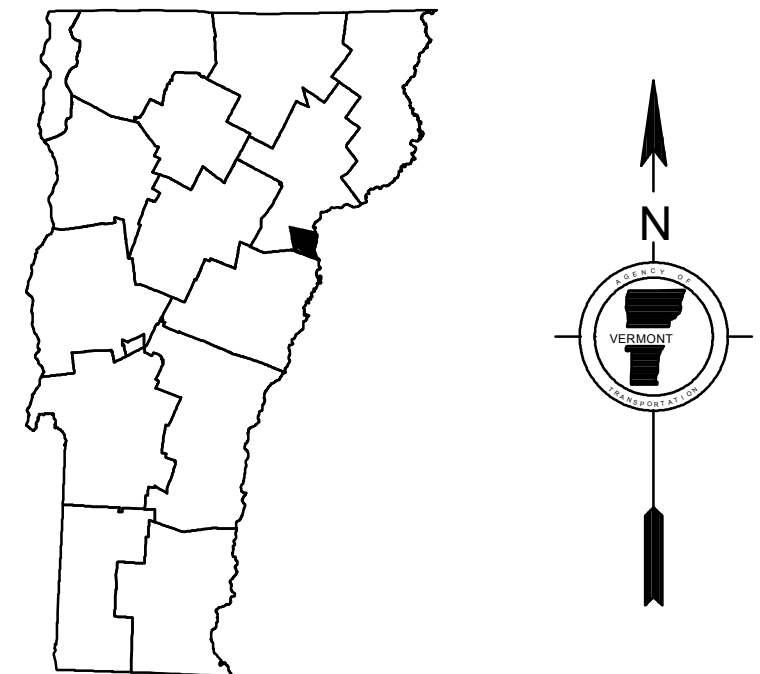
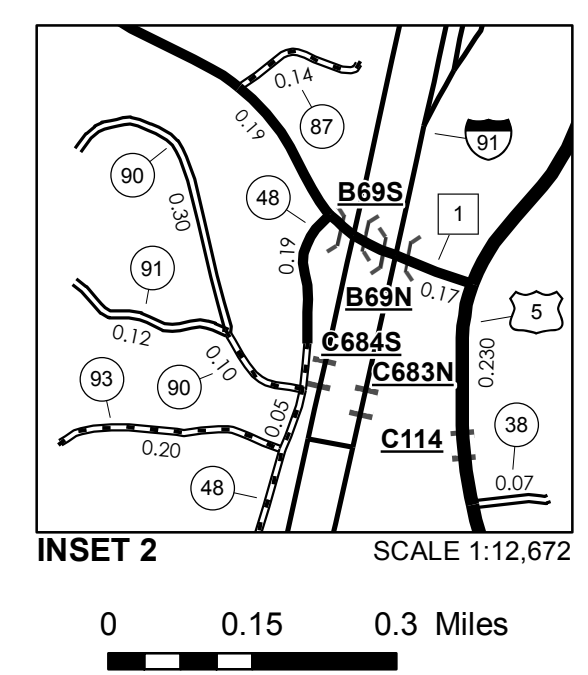
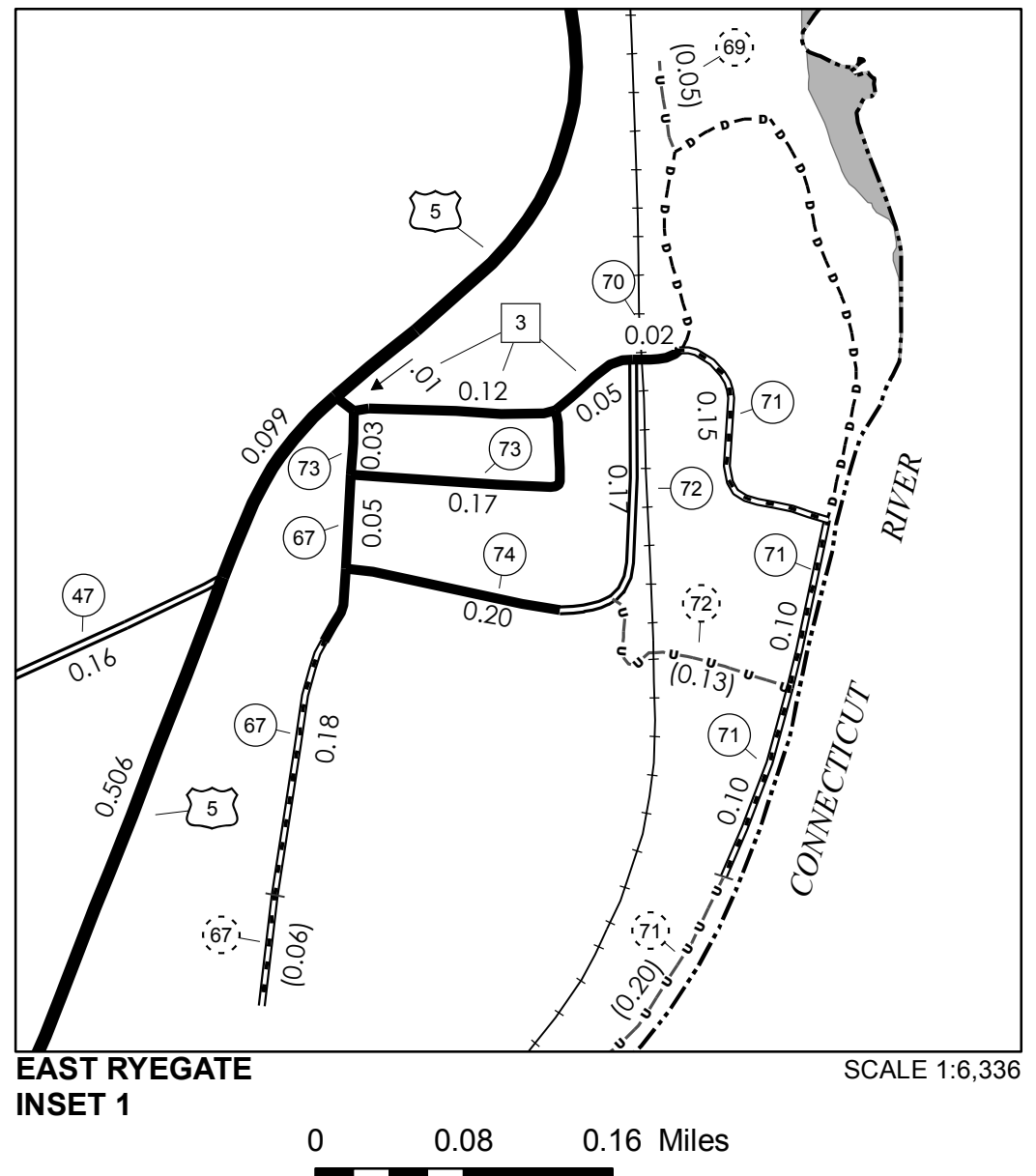
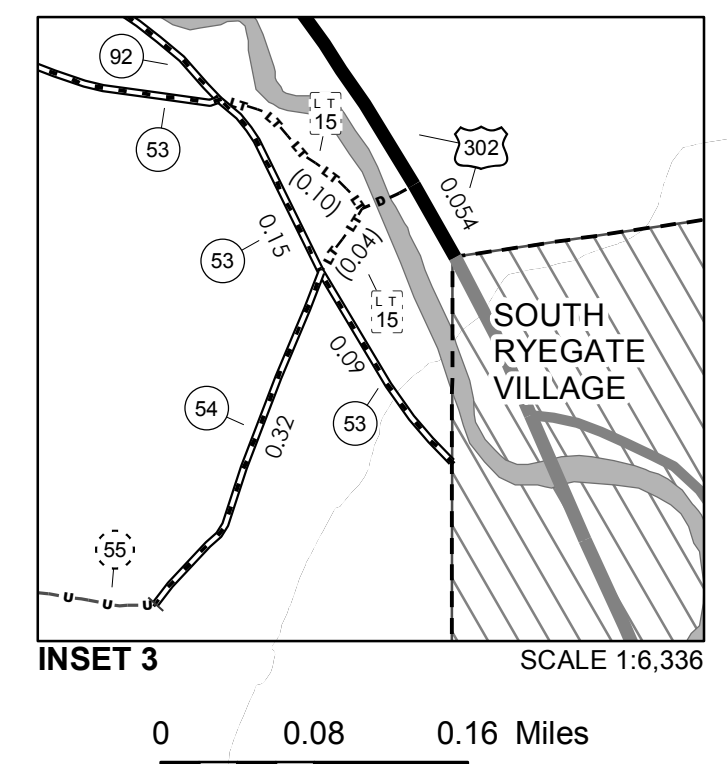
TOWN HWY. No.	LENGTH IN MILES "NOT UP TO STANDARD"
67	(0.06)
71	(0.04)
316	(0.19)
TOTAL	0.29

* The sections of the town highways listed above are legally Class 3, but have been deemed "Not Up to Standard" and are functionally Class 4 Town Highways

- HIGHWAYS**
 - INTERSTATE OR DIVIDED HIGHWAY
 - STATE - HARD SURFACE OR PAVED
 - TOWN - HARD SURFACE OR PAVED
 - GRAVEL
 - SOIL OR GRADED AND DRAINED EARTH
 - UNIMPROVED OR PRIMITIVE
 - IMPASSABLE OR UNTRAVELED
 - LEGAL TRAIL
 - DISCONTINUED
 - HIGHWAY CLASS CHANGE
 - RAILROAD
 - INACTIVE RAILROAD
 - NFR NATIONAL FOREST ROAD
 - SFH STATE FOREST HIGHWAY
 - P PARK AND RIDE
- POLITICAL SUBDIVISIONS**
 - STATE BOUNDARY
 - COUNTY BOUNDARY
 - TOWN BOUNDARY
 - VILLAGE BOUNDARY
 - URBAN COMPACT BOUNDARY
 - WATER BODY
 - STREAM OR BROOK
- BRIDGE OR CULVERT**
 - BRIDGE OR CULVERT GREATER THAN 20'
 - BRIDGE OR CULVERT 6' - 20'
- FEDERAL CLASSIFICATION IDENTIFIER**
 - FAU URBAN ARTERIAL OR COLLECTOR
 - MA MINOR ARTERIAL
 - MJC MAJOR COLLECTOR
 - MNC MINOR COLLECTOR
 - PA PRINCIPAL ARTERIAL
- STATE BRIDGE OR CULVERT IDENTIFIER**
 - B34 / C34 STATE BRIDGE OR CULVERT IDENTIFIER
 - B34 / C34 TOWN BRIDGE OR CULVERT IDENTIFIER
- PUBLIC LAND - GREEN MOUNTAIN NATIONAL FOREST**
- PUBLIC LAND - STATE/MUNICIPAL**

DISCLAIMER:
The untraveled highways (laid-out town highways), discontinued highways, and legal trails hereon are those of which the Agency of Transportation has record; others may exist.
Highway and bridge data by the Agency of Transportation. All other data from the Vermont Center for Geographic Information. Only named streams are shown.

Vermont State Plane Coordinate System
North American Datum of 1983
SPCS_Zone_Identifier: 4400
Geodetic Reference System 80
4,000-meter grid, Easting - Northing



VERMONT
GENERAL HIGHWAY MAP
Town of Ryegate
CALEDONIA COUNTY
Transportation District #7
Prepared by the
Vermont Agency of Transportation
Division of Policy, Planning and Intermodal Development
in cooperation with
U.S. Department of Transportation
Federal Highway Administration

