

TOWN HWY. No.	LENGTH IN MILES CLASS 3	LENGTH IN MILES CLASS 4
6	4.64	
7	5.07	
8	1.86	
9	0.28	
10	0.22	
11	0.40	
12	0.18	
13		(0.97)
15	0.04	
16	0.75	
17	0.71	
18	3.60	(0.08)
20	0.16	
21	0.73	
22	0.07	
25	0.80	
26	0.21	
28	1.46	(0.68)
29		(0.42)
31	0.80	
32	0.77	
34	0.23	
37	0.94	(0.51)
38	0.07	
39	0.35	
40	0.35	
41	0.30	
42	0.34	
43	0.30	
44	1.94	
45	0.73	
46	0.38	
47	0.16	
48	0.80	(0.25)
49		(0.21)
51	0.63	
52	0.16	(0.18)
53	0.84	(0.76)
54	0.32	(0.41)
55		(0.46)
56	0.30	(0.35)
58	0.33	
60	0.31	(0.39)
61	2.35	(0.50)
63	0.82	(0.31)
65	0.60	(0.41)
66	0.55	(0.69)
67	0.23	(1.10)
68		(0.73)
69		(2.63)
70	0.02	(0.14)
71	0.35	(0.16)
72	0.17	(0.13)
73	0.20	
74	0.20	
78	0.10	
80		(0.11)
81	0.40	
82	0.08	
87	0.14	
88	0.29	(0.61)
89	0.27	
90	0.40	
91	0.12	
92	1.01	
93	0.20	
300	0.10	
302	0.36	
304	0.16	
306	0.06	
308	0.61	
310	0.17	
312	0.04	
314	0.23	
318	0.30	
320	0.05	
322	0.07	
324	0.06	
TOTAL	43.24	6.66

MILEAGE SUMMARY		
CLASS 2		
TH-1	4.910	
TH-2	0.350	
TH-3	0.180	
TH-4	2.320	
TH-5	1.730	
TH-6	4.470	
TOTAL CLASS 2	13.960	
CLASS 3		
TOTAL CLASS 3	43.24	
TOTAL TOWN	57.200	
US HIGHWAY		
US-5	7.386	
US-302	3.698	
TOTAL US HIGHWAY	11.084	
TOTAL STATE	11.084	
INTERSTATE		
I-91	6.241	
TOTAL INTERSTATE	6.241	
TOTAL INTERSTATE	6.241	
TOTAL, TRAVELED HIGHWAYS, FEB. 10, 2012:	74.525	
<small>(Excludes Class 4, Legal Trail, and Unidentified Corridor Mileage)</small>		

LEGAL TRAIL No.	LENGTH IN MILES LEGAL TRAIL
1	(0.18)
2	(0.76)
3	(0.41)
4	(0.46)
5	(0.35)
6	(0.20)
7	(0.15)
8	(0.50)
9	(0.31)
10	(0.41)
11	(0.69)
12	(1.10)
13	(0.73)
14	(2.63)
15	(0.14)
TOTAL	9.02

TOWN HWY. No.	LENGTH IN MILES "NOT UP TO STANDARD"
67	(0.06)
71	(0.04)
316	(0.19)
TOTAL	0.29

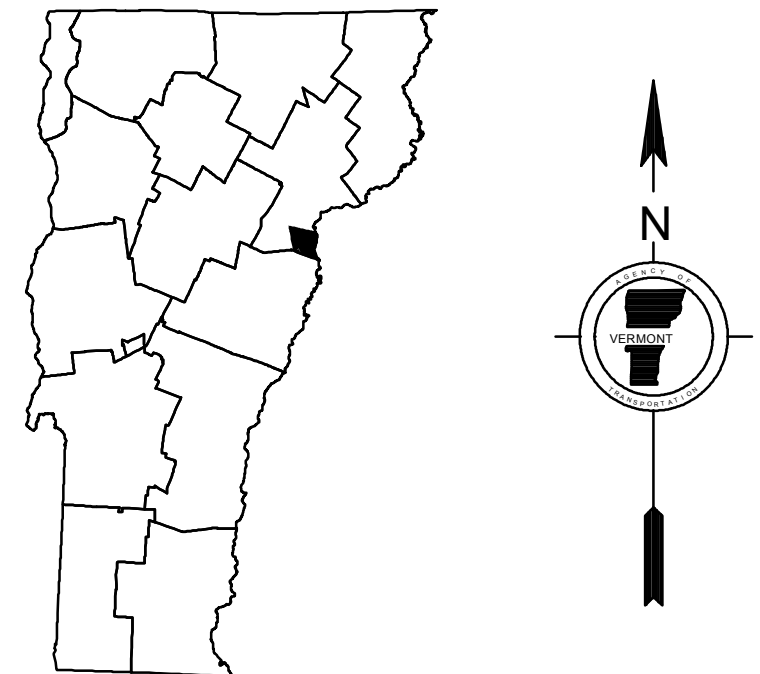
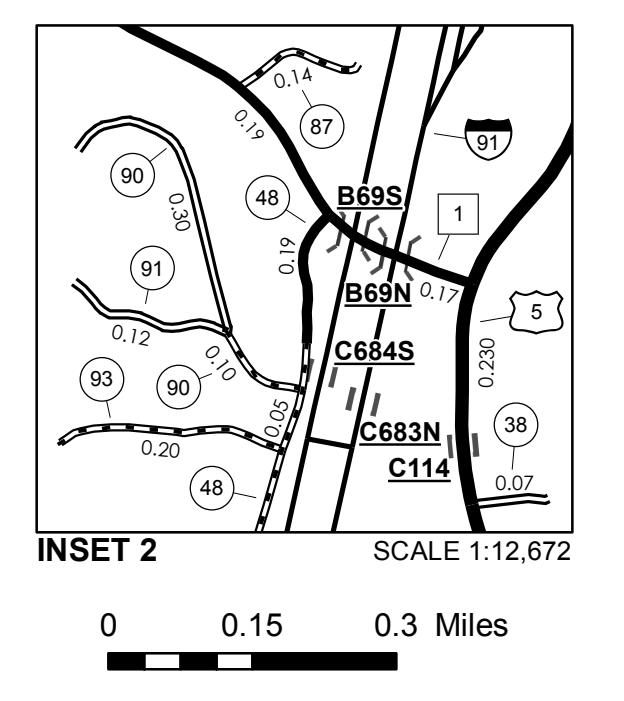
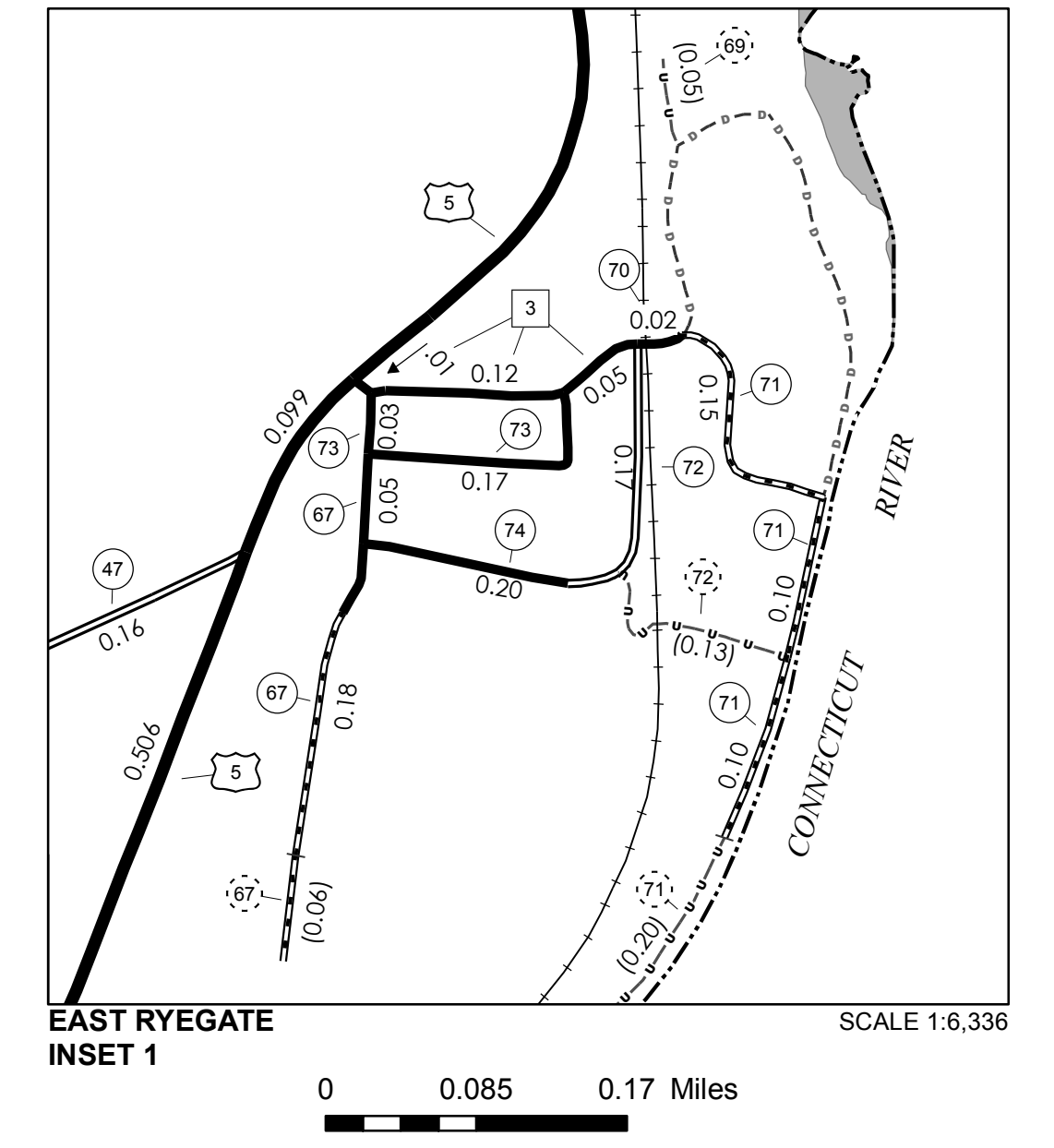
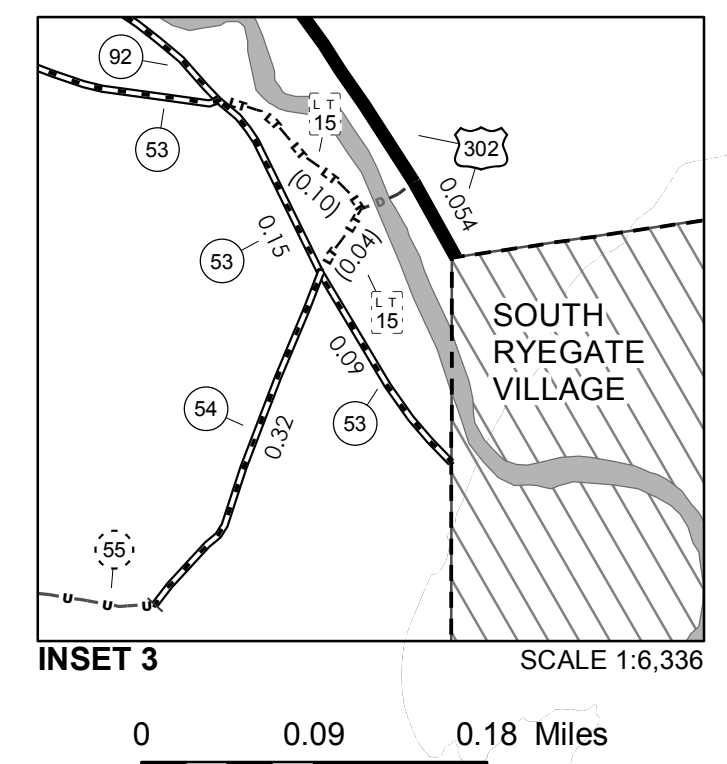
* The sections of the town highways listed above are legally Class 3, but have been deemed "Not Up To Standard" and are functionally Class 4 Town Highways

- HIGHWAYS**
 - INTERSTATE
 - U.S. ROUTE
 - STATE ROUTE
 - CLASS 1
 - CLASS 2
 - CLASS 3
 - CLASS 4
 - LEGAL TRAIL
- INTERSTATE OR DIVIDED HIGHWAY
- STATE - HARD SURFACE OR PAVED
- TOWN - HARD SURFACE OR PAVED
- GRAVEL
- SOIL OR GRADED AND DRAINED EARTH
- UNIMPROVED OR PRIMITIVE
- IMPASSABLE OR UNTRAVELED
- LEGAL TRAIL
- DISCONTINUED
- HIGHWAY CLASS CHANGE
- RAILROAD
- INACTIVE RAILROAD
- PARK AND RIDE
- PUBLIC LAND - GREEN MOUNTAIN NATIONAL FOREST
- PUBLIC LAND - STATE/MUNICIPAL
- POLITICAL SUBDIVISIONS**
 - STATE BOUNDARY
 - COUNTY BOUNDARY
 - TOWN BOUNDARY
 - VILLAGE BOUNDARY
 - URBAN COMPACT BOUNDARY
 - WATER BODY
 - STREAM OR BROOK
- BRIDGE OR CULVERT**
 - BRIDGE OR CULVERT GREATER THAN 20'
 - BRIDGE OR CULVERT 6' - 20'
- B34 / C34** STATE BRIDGE OR CULVERT IDENTIFIER
- B34 / C34** TOWN BRIDGE OR CULVERT IDENTIFIER

FEDERAL CLASSIFICATION IDENTIFIER
 FAU URBAN ARTERIAL OR COLLECTOR
 MA MINOR ARTERIAL
 MJC MAJOR COLLECTOR
 MNC MINOR COLLECTOR
 PA PRINCIPAL ARTERIAL

Vermont State Plane Coordinate System
 North American Datum of 1983
 SPCS_Zone_Identifier: 4400
 Geodetic Reference System 80
 4,000-meter grid, Easting - Northing

DISCLAIMER:
 The untraveled highways (laid-out town highways), discontinued highways, and legal trails hereon are those of which the Agency of Transportation has record; others may exist.
 Highway and bridge data by the Agency of Transportation. All other data from the Vermont Center for Geographic Information. Only named streams are shown.



VERMONT
GENERAL HIGHWAY MAP
Town of Ryegate
 CALEDONIA COUNTY
 Transportation District #7
 Prepared by the
 Vermont Agency of Transportation
 Division of Policy, Planning and Intermodal Development
 in cooperation with
 U.S. Department of Transportation
 Federal Highway Administration

