

TOWN HWY. NO.	LENGTH IN MILES CLASS 3	LENGTH IN MILES CLASS 4	TOTAL
6	4.640	0.330	
7	5.070	0.310	(0.390)
8	1.860	2.350	
9	0.280	0.820	
10	0.220	0.600	
11	0.400	0.550	
12	0.180	0.230	
13	(0.970)	* 67 (0.060)	
15	0.040	68 (1.570)	
16	0.750	69 (0.050)	
17	0.710	70 (0.080)	
18	3.600	71 (0.160)	
20	0.160	* 72 (0.040)	
21	0.730	73 (0.130)	
22	0.070	74 (0.200)	
25	0.800	75 (0.200)	
26	0.210	76 (0.100)	
28	1.460	80 (0.110)	
29	(0.680)	81 (0.420)	
31	0.800	82 (0.080)	
32	0.770	87 (0.140)	
34	0.230	88 (0.610)	
37	0.940	89 (0.270)	
38	0.070	90 (0.400)	
39	0.350	91 (0.120)	
40	0.350	92 (1.010)	
41	0.300	93 (0.200)	
42	0.340	300 (0.100)	
43	0.300	302 (0.360)	
44	1.940	304 (0.160)	
45	0.730	306 (0.060)	
46	0.380	308 (0.610)	
47	0.160	310 (0.170)	
48	0.800	312 (0.040)	
49	(0.210)	314 (0.230)	
51	0.630	318 (0.190)	
52	0.160	318 (0.300)	
53	0.840	320 (0.050)	
54	0.320	322 (0.070)	
55	(0.520)	324 (0.060)	
56	0.300	TOTAL 43.240	6.950

* This portion of town highway is Class 3, but is functionally Class 4

Includes error correction dated August 23, 2007

MILEAGE SUMMARY

CLASS 2		
TH-1	4.910	
TH-2	0.350	
TH-3	0.180	
TH-4	2.320	
TH-5	1.730	
TH-6	4.470	
TOTAL CLASS 2		13.960
CLASS 3		
TOTAL CLASS 3		43.240
TOTAL TOWN		57.200
US HIGHWAY		
US-5	7.386	
US-302	3.698	
TOTAL US HIGHWAY		11.084
TOTAL STATE		11.084
INTERSTATE		
I-91	6.241	
TOTAL INTERSTATE		6.241
TOTAL INTERSTATE		6.241

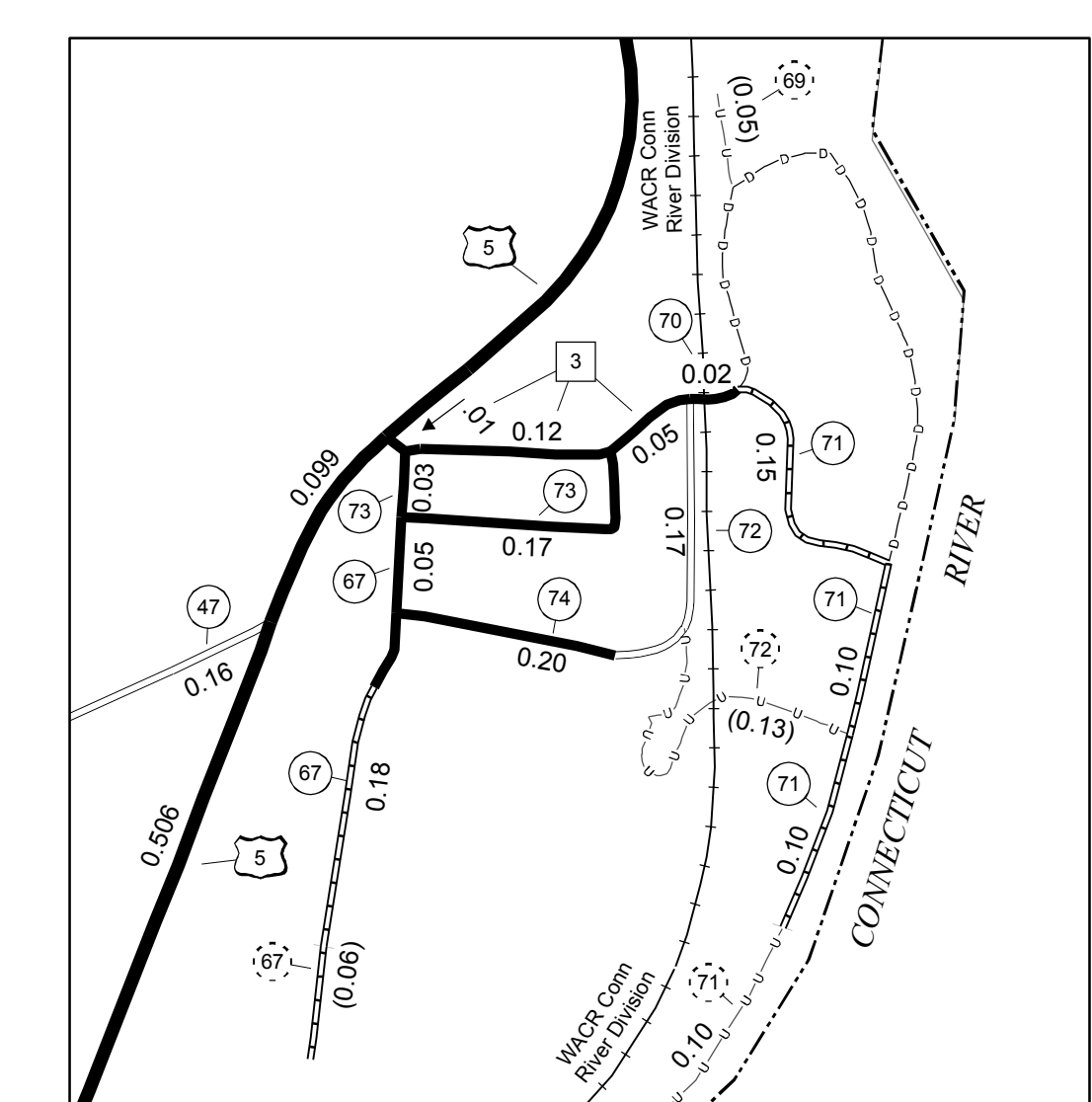
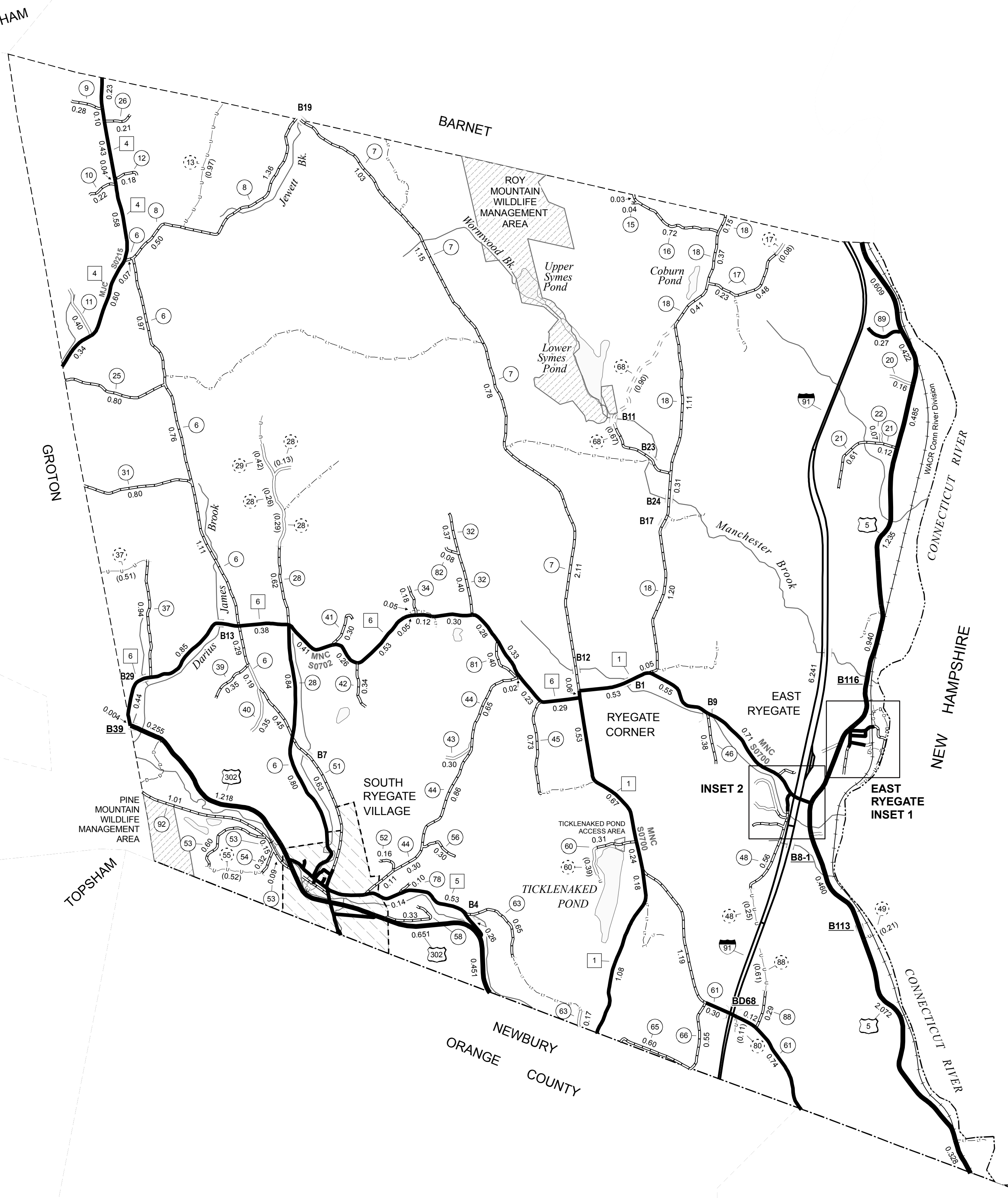
TOTAL, TRAVELED HIGHWAYS, FEB. 10, 2007: 74.525

(Excludes Class 4 and Legal Trail Mileage)
(Includes error correction dated August 23, 2007)

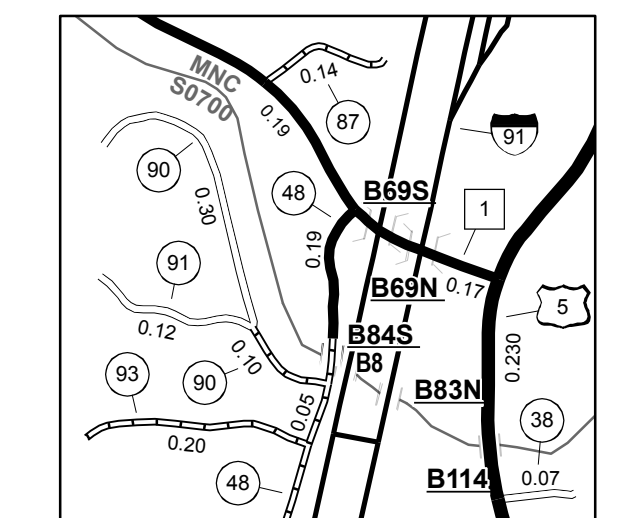
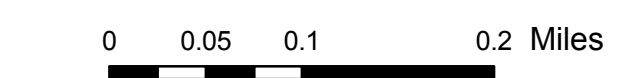
- HIGHWAYS**
- INTERSTATE
- U.S. ROUTE
- STATE ROUTE
- CLASS 1
- CLASS 2
- CLASS 3
- CLASS 4
- LEGAL TRAIL
- INTERSTATE OR DIVIDED HIGHWAY
- STATE - HARD SURFACE OR PAVED
- TOWN - HARD SURFACE OR PAVED
- GRAVEL
- SOIL OR GRADED AND DRAINED EARTH
- UNIMPROVED OR PRIMITIVE
- IMPASSABLE OR UNTRAVELED
- LEGAL TRAIL
- DISCONTINUED
- HIGHWAY CLASS CHANGE
- RAILROAD
- FEDERAL CLASSIFICATION IDENTIFIER
- FAU URBAN ARTERIAL OR COLLECTOR
- MA MINOR ARTERIAL
- MJC MAJOR COLLECTOR
- MNC MINOR COLLECTOR
- PA PRINCIPAL ARTERIAL
- PUBLIC LAND
- POLITICAL SUBDIVISIONS
- STATE BOUNDARY
- COUNTY BOUNDARY
- TOWN BOUNDARY
- VILLAGE BOUNDARY
- URBAN COMPACT BOUNDARY
- WATER BODIES
- OPEN WATER
- SWAMP
- STREAM OR BROOK
- BRIDGE OR CULVERT
- BRIDGE OR CULVERT GREATER THAN 20'
- BRIDGE OR CULVERT 6' - 20'
- B34 STATE BRIDGE IDENTIFIER
- B34 TOWN BRIDGE IDENTIFIER

DISCLAIMER:
The untraveled highways (laid-out town highways), discontinued highways, and legal trails shown hereon are those of which the Agency of Transportation has record; others may exist.
Highway and bridge data by the Agency of Transportation, Policy & Planning Division. All other data from the Vermont Center for Geographic Information.

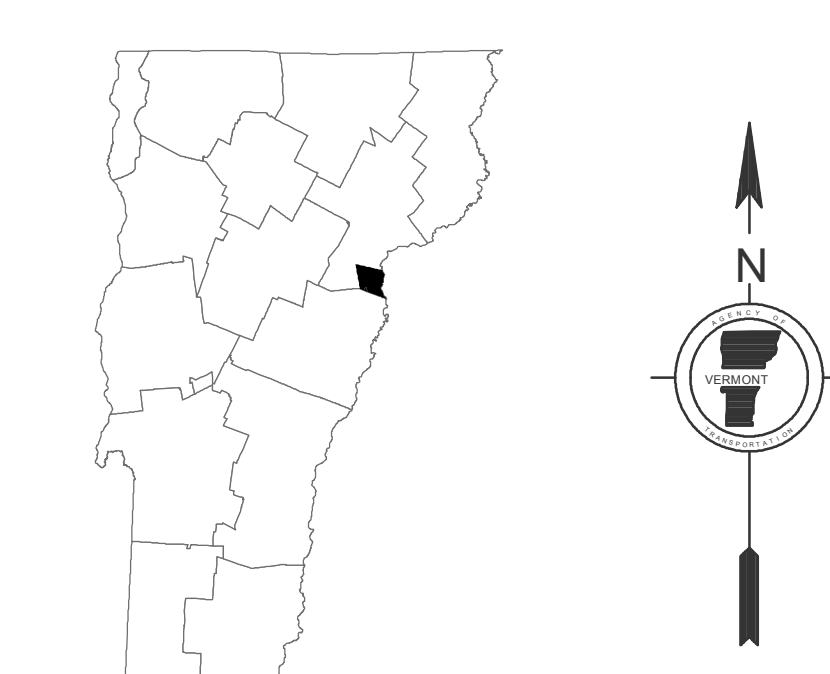
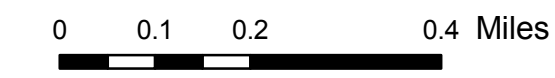
Vermont State Plane Coordinate System
North American Datum of 1983
SPCS_Zone_Identifier: 4400
Geodetic Reference System 80
4,000-meter grid, Easting - Northing



EAST RYEGATE INSET 1 SCALE 1:6336



INSET 2 SCALE 1:12672



VERMONT
GENERAL HIGHWAY MAP
Town of Ryegate
CALEDONIA COUNTY

Transportation District #7

Prepared by the
Vermont Agency of Transportation
Policy & Planning Division
in cooperation with
U.S. Department of Transportation
Federal Highway Administration

Mileage as of: Feb. 10, 2007
Map generated: October, 2007

