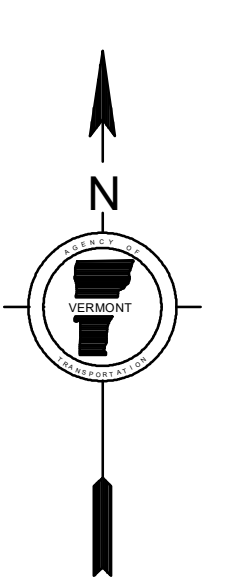
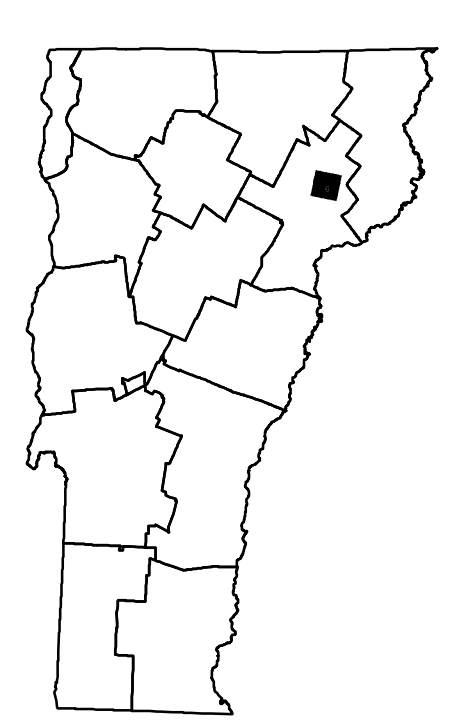
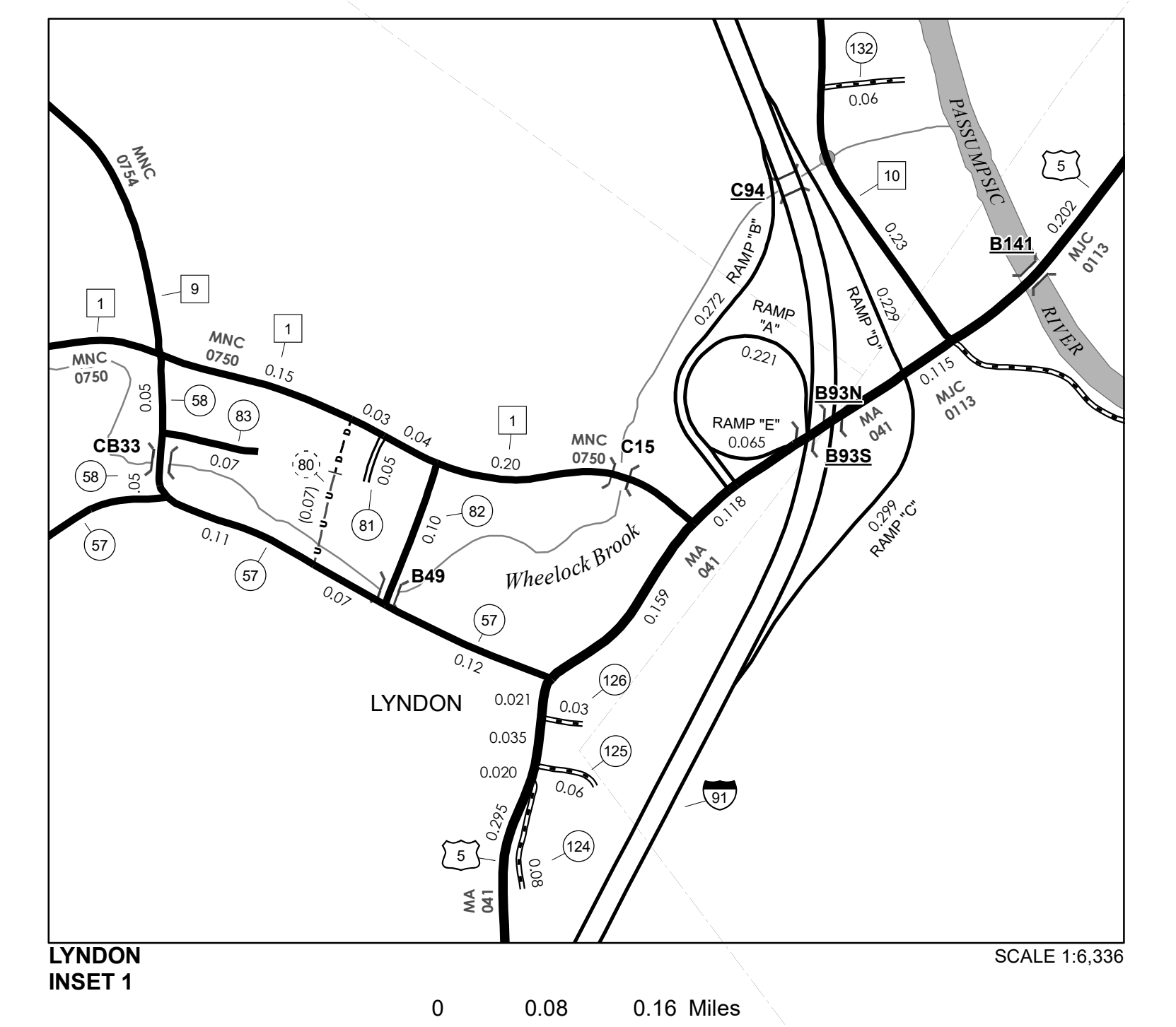
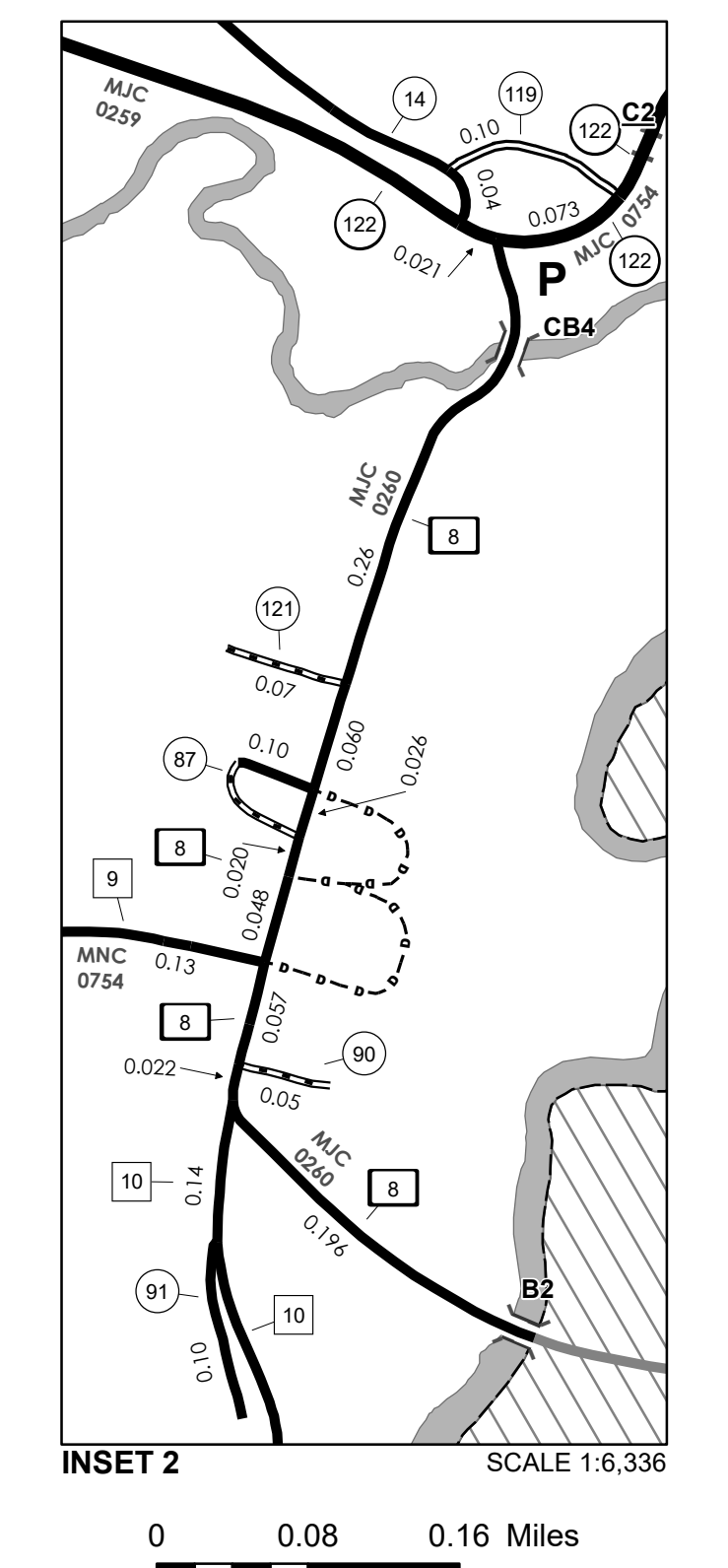
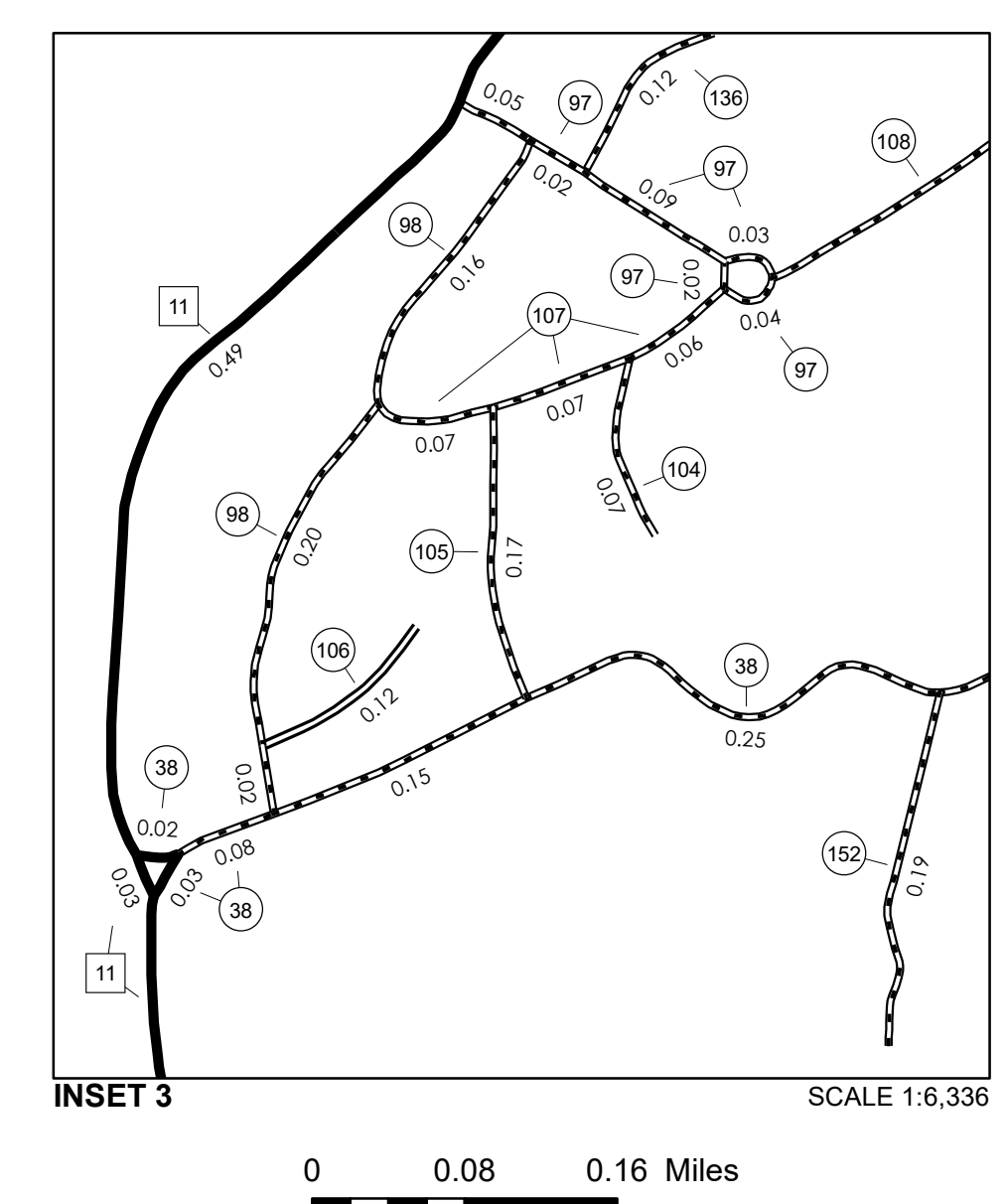
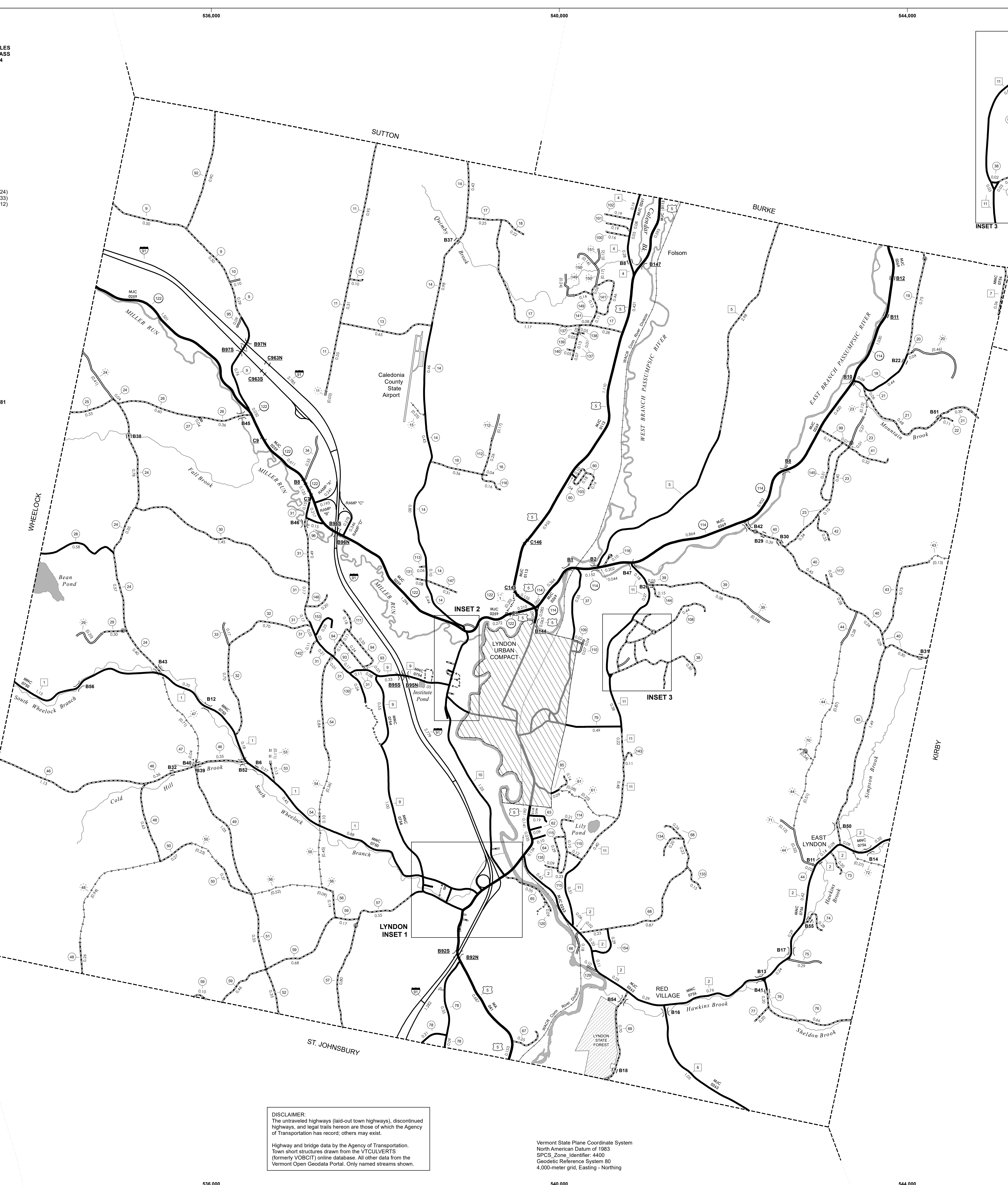


TOWN HWY. No.	LENGTH IN MILES CLASS 3	LENGTH IN MILES CLASS 4	TOWN HWY. No.	LENGTH IN MILES CLASS 3	LENGTH IN MILES CLASS 4	TOWN HWY. No.	LENGTH IN MILES CLASS 3	LENGTH IN MILES CLASS 4
9	2.05		66	0.18		127	0.07	
10	0.30		67	0.25		129	0.10	
11	1.81	(0.03)	68	1.58		130	0.24	
12	0.10		69	0.70		131	0.08	
13	0.65		70	0.86	(0.34)	132	0.06	
14	3.68		71		(0.12)	133	0.15	
15		(0.25)	72		(0.27)	134	0.20	
16	0.40		73	0.20		135	0.09	
17	1.78		74	0.28		136	0.12	
18	0.22		75	0.29		137	0.26	
19	1.28		76	0.86		138	0.05	
20	0.04	(0.46)	77	0.20		139	0.05	
21	1.04		78	0.85		140	0.05	
22	0.11		79	0.86		141	0.75	
23	1.17	(0.12)	80		(0.07)	142	0.11	
24	2.34	(0.41)	81	0.05		143	0.11	
25	0.33		82	0.10		144	0.15	
26	0.96		83	0.07		145	0.51	
27	0.04		85	0.36		146	0.20	
28	0.58		87	0.10		147	0.31	
29	0.30	(0.20)	90	0.05		149	0.14	(0.24)
30	1.45		91	0.10		150		(0.33)
31	1.64		92	0.90		151		(0.12)
32	1.40		93	0.27		152	0.19	
33	0.17		94	0.58		153	0.25	
34	0.35		95	0.09		154	0.29	
37	0.55		96	0.15		301	0.07	
38	0.83		97	0.25		302	0.06	
39	0.63	(0.19)	98	0.38		303	0.06	
40	1.77		99	0.26		304	0.46	
41	0.32		100	0.16		305	0.07	
42	0.25		101	0.19		306	0.25	
43	0.75	(0.13)	102	0.19		307	0.12	
44	0.30	(1.70)	103	0.18		308	0.29	
45	1.49		104	0.07		309	0.10	
46	1.64		105	0.17		310	0.09	
47	0.04	(0.71)	106	0.12		311	0.09	
48	0.89	(0.94)	107	0.20		312	0.04	
49	1.05		108	0.44		313	0.06	
50	0.64	(0.23)	109	0.02		314	0.28	
51	0.55		110	0.20		316	0.11	
52	0.35		111	0.18		317	0.08	
53	0.13	(0.11)	112	0.26	(0.17)	318	0.08	
54	0.94	(0.36)	113	0.06		319	0.09	
55	0.10	(0.45)	114	0.21		320	0.30	
56	0.19	(0.61)	115	0.74		321	0.60	
57	1.65		116	0.16		322	0.20	
58	0.10		117	0.09		323	0.22	
59	1.41		118	0.10		325	0.10	
60	0.30	(0.25)	119	0.10		326	0.30	
61			120	0.09		327	0.19	
62	0.09		121	0.07		328	0.04	
63	0.19		124	0.08		330	0.09	
64	0.10		125	0.06		331	0.15	
65	0.35		126	0.03				
TOTAL							64.76	3.81

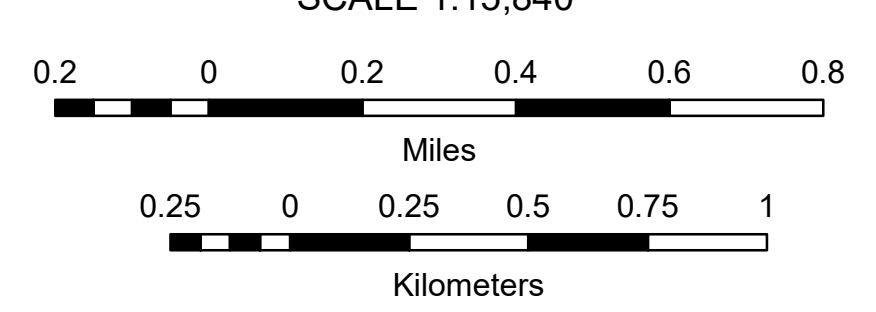
LEGAL TRAIL No.	LENGTH IN MILES LEGAL TRAIL	TOWN HWY. No.	LENGTH IN MILES "NOT UP TO STANDARD"
1	(0.20)	61	(0.08)
2	(0.03)	320	(0.04)
TOTAL		TOTAL	0.12

* The sections of the town highways listed above are legally Class 3, but have been deemed "Not Up To Standard" and are functionally Class 4 Town Highways

MILEAGE SUMMARY			
CLASS 1	1.042		
TH-8	0.984		
TH-12		TOTAL CLASS 1	2.026
CLASS 2			
TH-1	4.050		
TH-2	3.910		
TH-4	0.600		
TH-5	2.980		
TH-6	1.050		
TH-7	0.360		
TH-9	2.060		
TH-10	1.420		
TH-11	2.960		
		TOTAL CLASS 2	19.390
CLASS 3		TOTAL CLASS 3	64.76
		TOTAL TOWN	86.176
STATE HIGHWAY			
VT-114	4.030		
VT-122	4.353		
		TOTAL STATE HIGHWAY	8.383
STATE HIGHWAY - Ramps			
VT-114	0.085		
		TOTAL STATE HIGHWAY - Ramps	0.085
US HIGHWAY			
US-5	6.028		
		TOTAL US HIGHWAY	6.028
		TOTAL STATE	14.496
INTERSTATE			
I-91	6.846		
		TOTAL INTERSTATE	6.846
INTERSTATE - Ramps			
I-91	2.144		
		TOTAL INTERSTATE - Ramps	2.144
		TOTAL INTERSTATE	8.990
TOTAL, TRAVELED HIGHWAYS, FEB. 10, 2024: 109.662			
(Excludes Class 4 and Legal Trail Mileage)			



VERMONT
GENERAL HIGHWAY MAP
Town of Lyndon
 CALEDONIA COUNTY
 Transportation District #7
 Prepared by the
 Vermont Agency of Transportation
 Division of Policy, Planning and Intermodal Development
 in cooperation with
 U.S. Department of Transportation
 Federal Highway Administration
 Mileage as of February 10, 2024
 Map prepared August 06, 2024
 SCALE 1:15,840



DISCLAIMER:
 The untraveled highways (loop-out town highways), discontinued highways, and legal trails herein are those of which the Agency of Transportation has record; others may exist.
 Highway and bridge data by the Agency of Transportation.
 Town short structures drawn from the VTCULVERTS (formerly VOBOT) online database. All other data from the Vermont Open Geospatial Portal. Only named streams shown.

Vermont State Plane Coordinate System
 North American Datum of 1983
 SPCS Zone Identifier: 4100
 Geodetic Reference System 80
 4,000-meter grid, Easting - Northing