

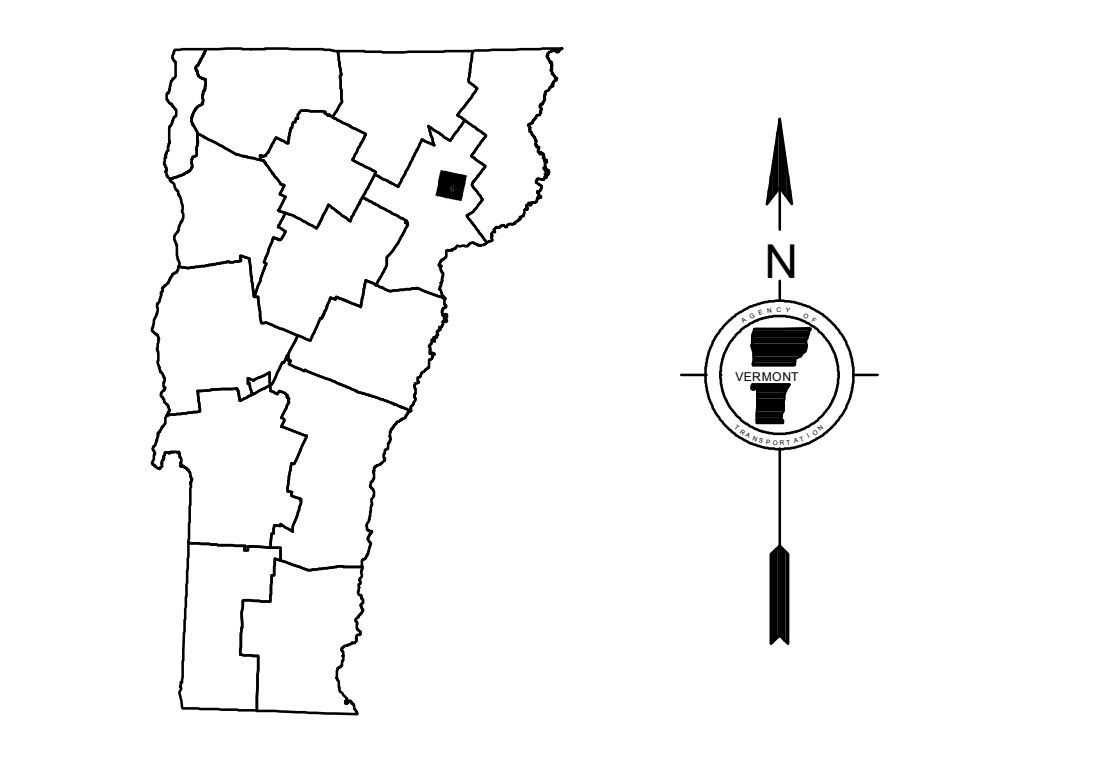
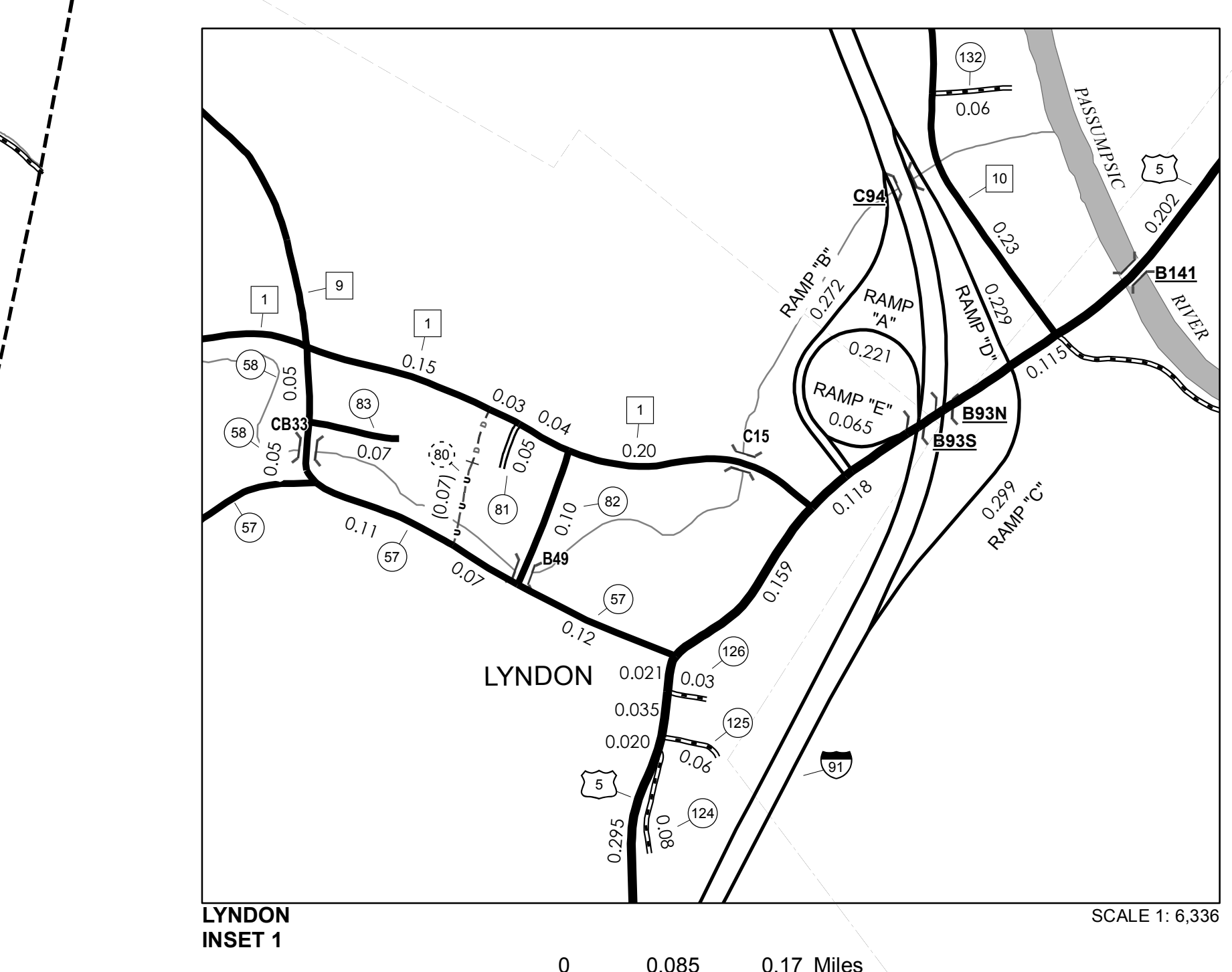
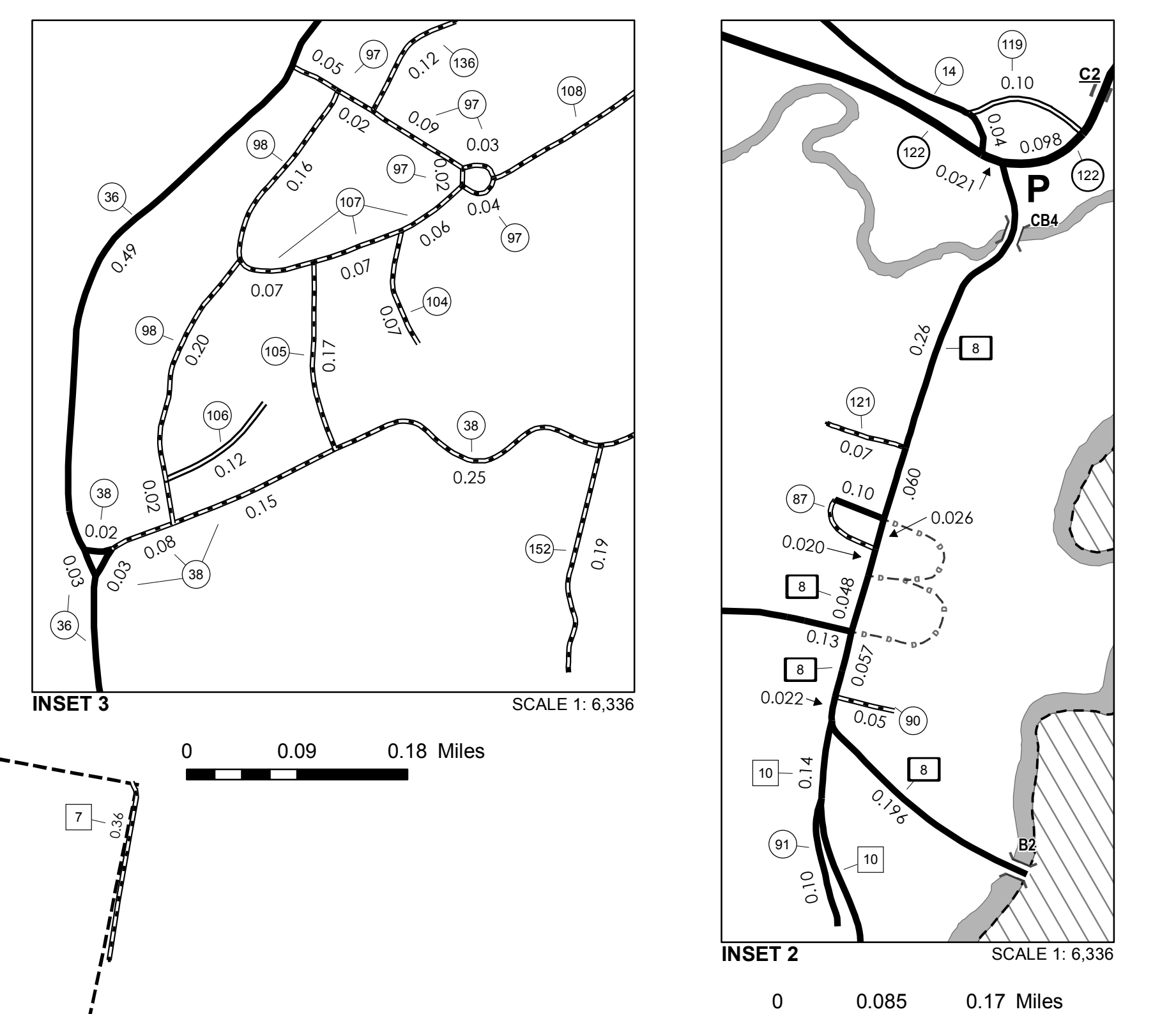
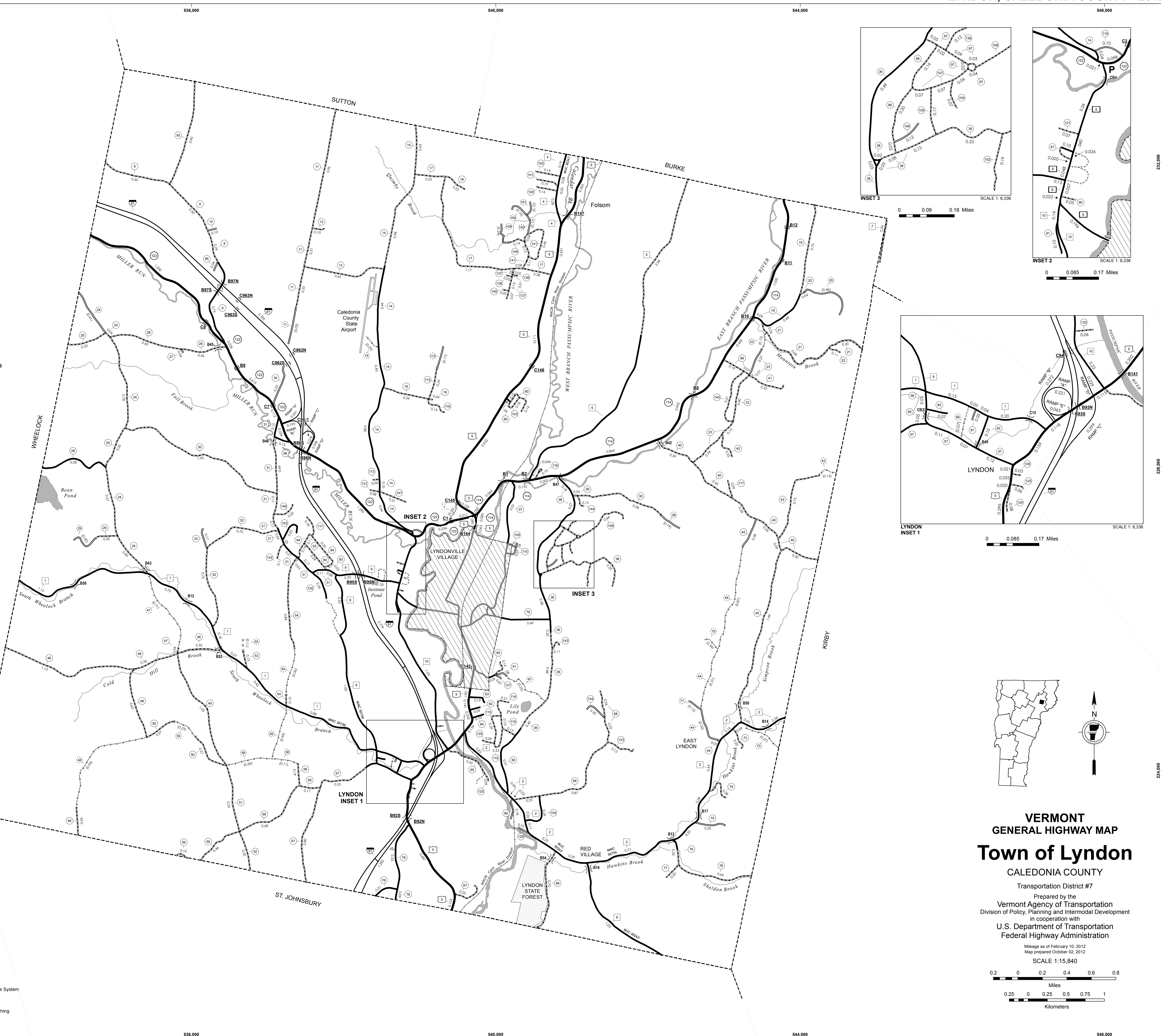
TOWN HWY. No.	LENGTH IN MILES CLASS 3	CLASS 4	TOWN HWY. No.	LENGTH IN MILES CLASS 3	CLASS 4	TOWN HWY. No.	LENGTH IN MILES CLASS 3	CLASS 4
9	2.05		56	0.19	(0.61)	106	0.12	
10	0.10		57	1.55		107	0.20	
11	1.81	(0.03)	58	0.10		108	0.44	
12	0.10		59	1.41		109	0.02	
13	0.65		60	0.30		110	0.11	
14	3.68		61	0.08	(0.25)	111	0.18	
15	0.40	(0.25)	62	0.09		112	0.26	(0.17)
16	1.78		63	0.19		113	0.06	
17	0.22		64	0.10		114	0.21	
18	1.28		65	0.35		115	0.74	
19	0.04	(0.46)	66	0.18		116	0.16	
20	1.04		67	0.25		117	0.09	
21	2.14	(0.12)	68	1.58		118	0.10	
22	0.11	(0.41)	69	0.70		119	0.10	
23	1.17		70			120	0.09	
24	2.34	(0.41)	71		(0.34)	121	0.07	
25	0.33		72		(0.27)	122	0.07	
26	0.96		73	0.20		125	0.06	
27	0.04		74	0.28		126	0.03	
28	0.58		75	0.29		127	0.07	
29	0.30	(0.20)	76	0.86		129	0.10	
30	1.45		77	0.20		130	0.24	
31	1.64		78	0.85		131	0.08	
32	1.40		79	0.49		132	0.06	
33	0.17		80		(0.07)	133	0.15	
34	0.35		81	0.05		134	0.20	
36	2.96		82	0.10		135	0.09	
37	0.55		83	0.07		136	0.12	
38	0.83		85	0.23		137	0.26	
39	0.63	(0.19)	87	0.10		138	0.05	
40	1.77		90	0.05		139	0.05	
41	0.32		91	0.10		140	0.05	
42	0.25		92	0.90		141	0.76	
43	0.75	(0.13)	93	0.27		142	0.11	
44	0.30	(1.70)	94	0.58		143	0.11	
45	1.49		95	0.09		144	0.15	
46	1.84		96	0.15		145	0.51	
47	0.04	(0.71)	97	0.25		146	0.20	
48	0.89	(0.94)	98	0.38		147	0.31	
49	1.05		99	0.26		149	0.14	(0.24)
50	0.64	(0.23)	100	0.16		150		(0.33)
51	0.55		101	0.19		151		(0.12)
52	0.35		102	0.19		152	0.19	
53	0.13	(0.11)	103	0.18		153	0.25	
54	0.94	(0.36)	104	0.07		154	0.29	
55		(0.45)	105	0.17				
TOTAL			62.61		8.81			

MILEAGE SUMMARY		LEGAL TRAIL LENGTH IN MILES	
CLASS 1	0.689	TH-1	4.050
TH-8		TH-2	3.910
TOTAL CLASS 1	0.689	TH-4	0.600
CLASS 2		TH-5	2.980
TH-1	4.050	TH-6	1.050
TH-2	3.910	TH-7	0.360
TH-4	0.600	TH-9	2.060
TH-5	2.980	TH-10	1.420
TH-6	1.050	TOTAL CLASS 2	16.430
TH-7	0.360	CLASS 3	
TH-9	2.060	TOTAL CLASS 3	62.61
TH-10	1.420	TOTAL TOWN	79.729
TOTAL CLASS 2	16.430	STATE HIGHWAY	
CLASS 3		VT-114	4.030
TOTAL CLASS 3	62.61	VT-122	4.353
TOTAL TOWN	79.729	TOTAL STATE HIGHWAY	8.383
STATE HIGHWAY		STATE HIGHWAY - Ramps	
VT-114	4.030	VT-114	0.085
VT-122	4.353	TOTAL STATE HIGHWAY - Ramps	0.085
TOTAL STATE HIGHWAY	8.383	US HIGHWAY	
STATE HIGHWAY - Ramps	0.085	US-5	5.565
TOTAL STATE HIGHWAY - Ramps	0.085	TOTAL STATE	14.033
US HIGHWAY		INTERSTATE	
US-5	5.565	I-91	6.846
TOTAL US HIGHWAY	5.565	TOTAL INTERSTATE	6.846
TOTAL STATE	14.033	INTERSTATE - Ramps	
INTERSTATE		I-91	2.144
I-91	6.846	TOTAL INTERSTATE - Ramps	2.144
TOTAL INTERSTATE	6.846	TOTAL INTERSTATE	8.990
INTERSTATE - Ramps	2.144		
TOTAL INTERSTATE - Ramps	2.144		
TOTAL INTERSTATE	8.990		

TOTAL TRAVELED HIGHWAYS, FEB. 10, 2012: 102.752
 (Excludes Class 4, Legal Trail, and Unidentified Corridor Mileage)

- HIGHWAYS**
 - INTERSTATE
 - U.S. ROUTE
 - STATE ROUTE
 - CLASS 1
 - CLASS 2
 - CLASS 3
 - CLASS 4
 - LEGAL TRAIL
 - INTERSTATE OR DIVIDED HIGHWAY
 - STATE - HARD SURFACE OR PAVED
 - TOWN - HARD SURFACE OR PAVED
 - GRAVEL
 - SOIL OR GRADED AND DRAINED EARTH
 - UNIMPROVED OR PRIMITIVE
 - IMPASSABLE OR UNTRAVELED
 - LEGAL TRAIL
 - DISCONTINUED
 - HIGHWAY CLASS CHANGE
 - RAILROAD
 - INACTIVE RAILROAD
 - PUBLIC LAND - GREEN MOUNTAIN NATIONAL FOREST
 - PUBLIC LAND - STATE/MUNICIPAL
- POLITICAL SUBDIVISIONS**
 - STATE BOUNDARY
 - COUNTY BOUNDARY
 - TOWN BOUNDARY
 - VILLAGE BOUNDARY
 - URBAN COMPACT BOUNDARY
- BRIDGE OR CULVERT**
 - STREAM OR BROOK
 - BRIDGE OR CULVERT GREATER THAN 20'
 - BRIDGE OR CULVERT 6' - 20'
 - STATE BRIDGE OR CULVERT IDENTIFIER
 - TOWN BRIDGE OR CULVERT IDENTIFIER
 - PARK AND RIDE
- FEDERAL CLASSIFICATION IDENTIFIER**
 - FAU - URBAN ARTERIAL OR COLLECTOR
 - MA - MINOR ARTERIAL
 - MJC - MAJOR COLLECTOR
 - MNC - MINOR COLLECTOR
 - PA - PRINCIPAL ARTERIAL

DISCLAIMER:
 The untraveled highways (laid-out town highways), discontinued highways, and legal trails herein are those of which the Agency of Transportation has record; others may exist.
 Highway and bridge data by the Agency of Transportation. All other data from the Vermont Center for Geographic Information. Only named streams are shown.
 Vermont State Plane Coordinate System
 North American Datum of 1983
 SPCS Zone Identifier: 4400
 Geodetic Reference System 80
 4,000-meter grid, Easting - Nothing



VERMONT
GENERAL HIGHWAY MAP
Town of Lyndon
 CALEDONIA COUNTY
 Transportation District #7
 Prepared by the
 Vermont Agency of Transportation
 Division of Policy, Planning and Intermodal Development
 in cooperation with
 U.S. Department of Transportation
 Federal Highway Administration
 Mileage as of February 10, 2012
 Map prepared October 02, 2012
 SCALE 1:15,840
 0.2 0 0.2 0.4 0.6 0.8
 Miles
 0.25 0 0.25 0.5 0.75 1
 Kilometers