

TOWN HWY. NO.	LENGTH IN MILES CLASS 3	LENGTH IN MILES CLASS 4			
9	2.050		56	0.190	(0.610)
10	0.100		57	1.650	(0.610)
11	1.810	(0.030)	58	0.100	
12	0.100		59	1.410	
13	0.650		60	0.300	
14	3.680	(0.250)	61	0.080	(0.250)
15			62	0.090	
16	0.400	(0.250)	63	0.190	(0.170)
17	1.780		64	0.100	
18	0.220		65	0.500	
19	1.280	(0.460)	66	0.180	
20	0.040		67	0.250	
21	1.040		68	1.580	
22	0.110		69	0.700	
23	1.170	(0.120)	70		(0.340)
24	2.140	(0.410)	71		(0.120)
25	0.330		72	0.200	(0.270)
26	0.960		73	0.200	
27	0.040		74	0.280	
28	0.580		75	0.290	
29	0.300	(0.200)	76	0.860	
30	1.450		77	0.200	
31	1.640		78	0.180	
32	1.400		79	0.490	
33	0.170		80		(0.070)
34	0.350		81	0.050	
36	2.960		82	0.100	
37	0.550		83	0.070	
38	0.830		84	0.190	
39	0.630	(0.190)	85	0.230	
40	1.770		87	0.100	
41	0.320		88	0.050	
42	0.250		89	0.050	
43	0.750	(0.130)	90	0.900	
44	0.300	(1.700)	91	0.270	
45	1.490		92	0.900	
46	1.840		93	0.270	
47	0.040	(0.710)	94	0.580	
48	1.050	(0.940)	95	0.090	
49	1.050		96	0.150	
49	0.640	(0.230)	97	0.250	
50	0.550		98	0.380	(0.240)
51	0.350		99	0.260	(0.330)
52	0.130	(0.110)	100	0.160	(0.120)
53	0.940	(0.360)	101	0.190	
54			102	0.190	
55			103	0.180	
			104	0.070	
			105	0.170	
TOTAL			62,090	8.810	

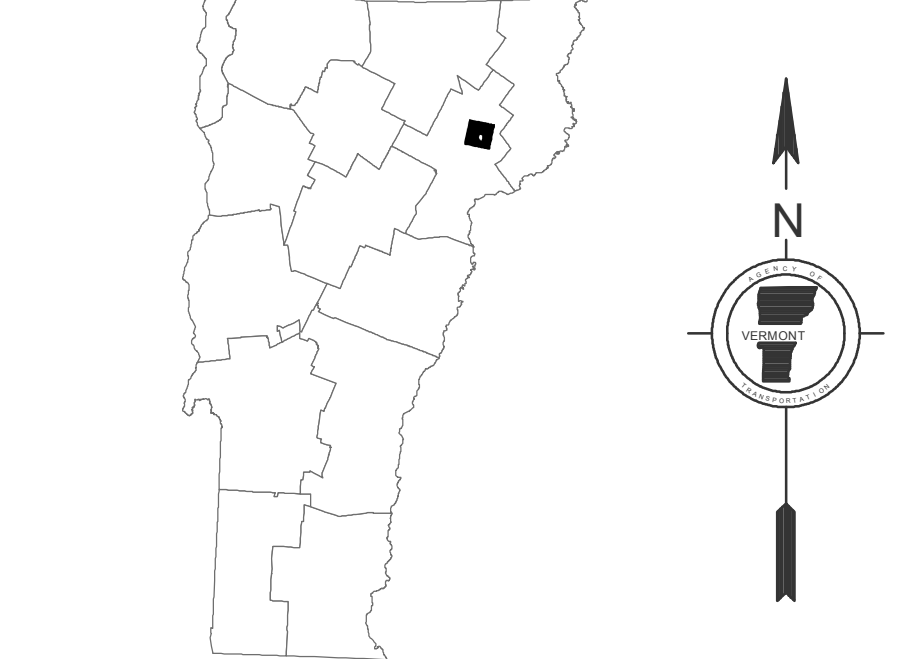
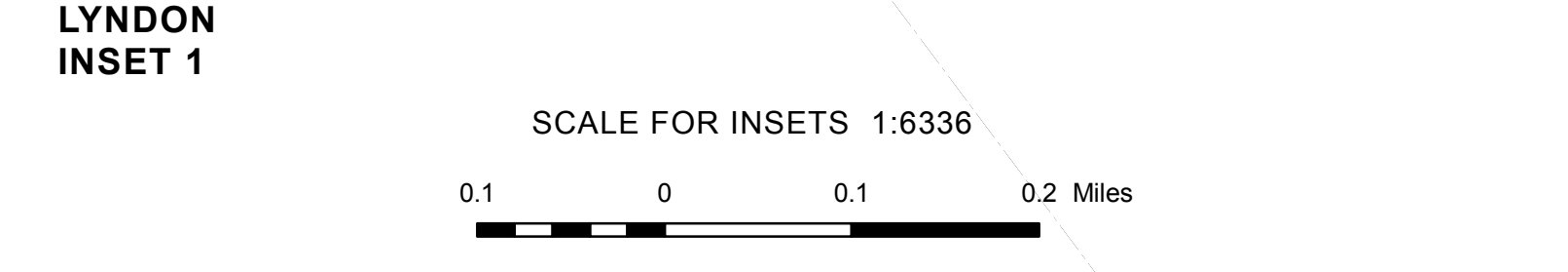
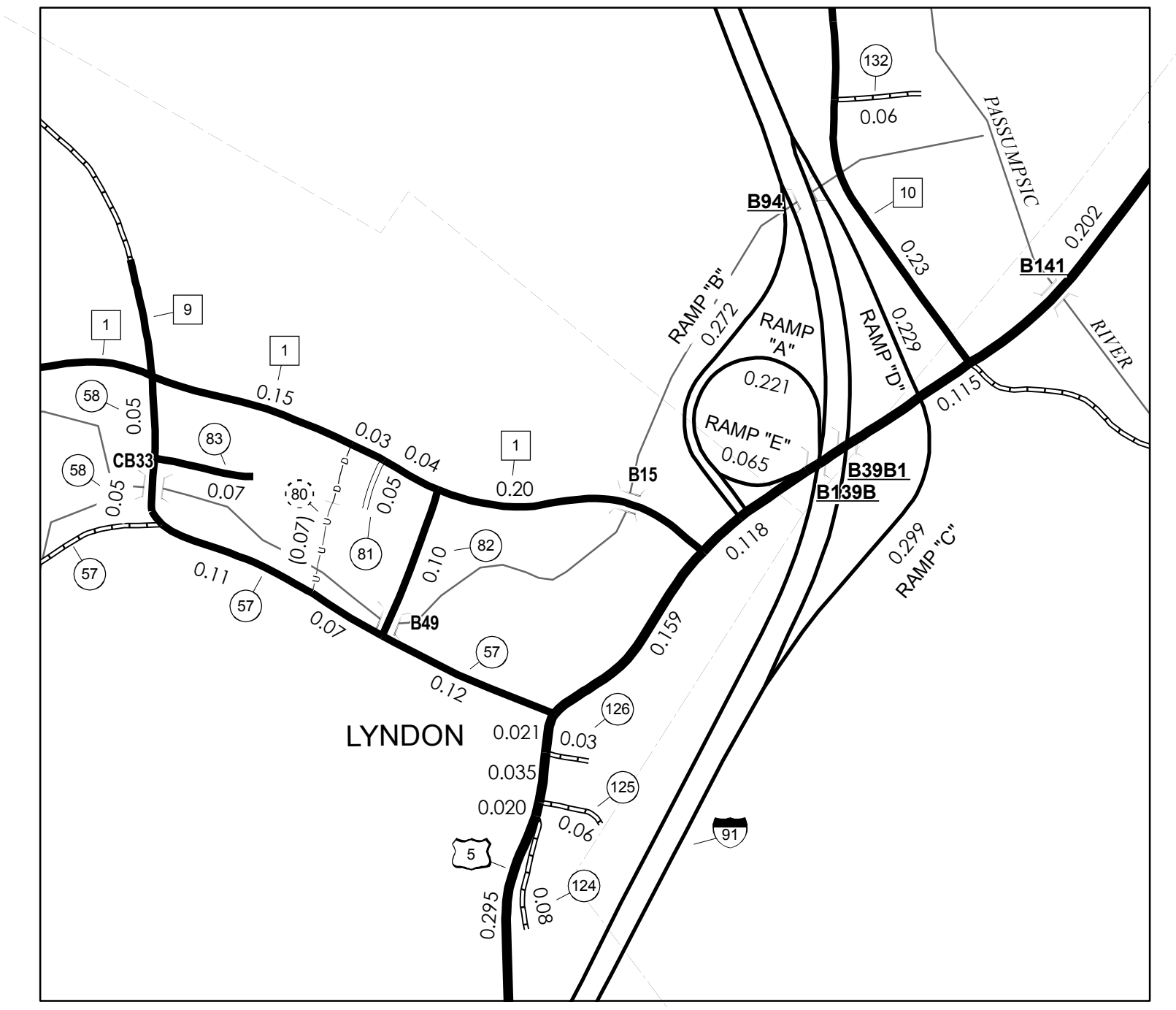
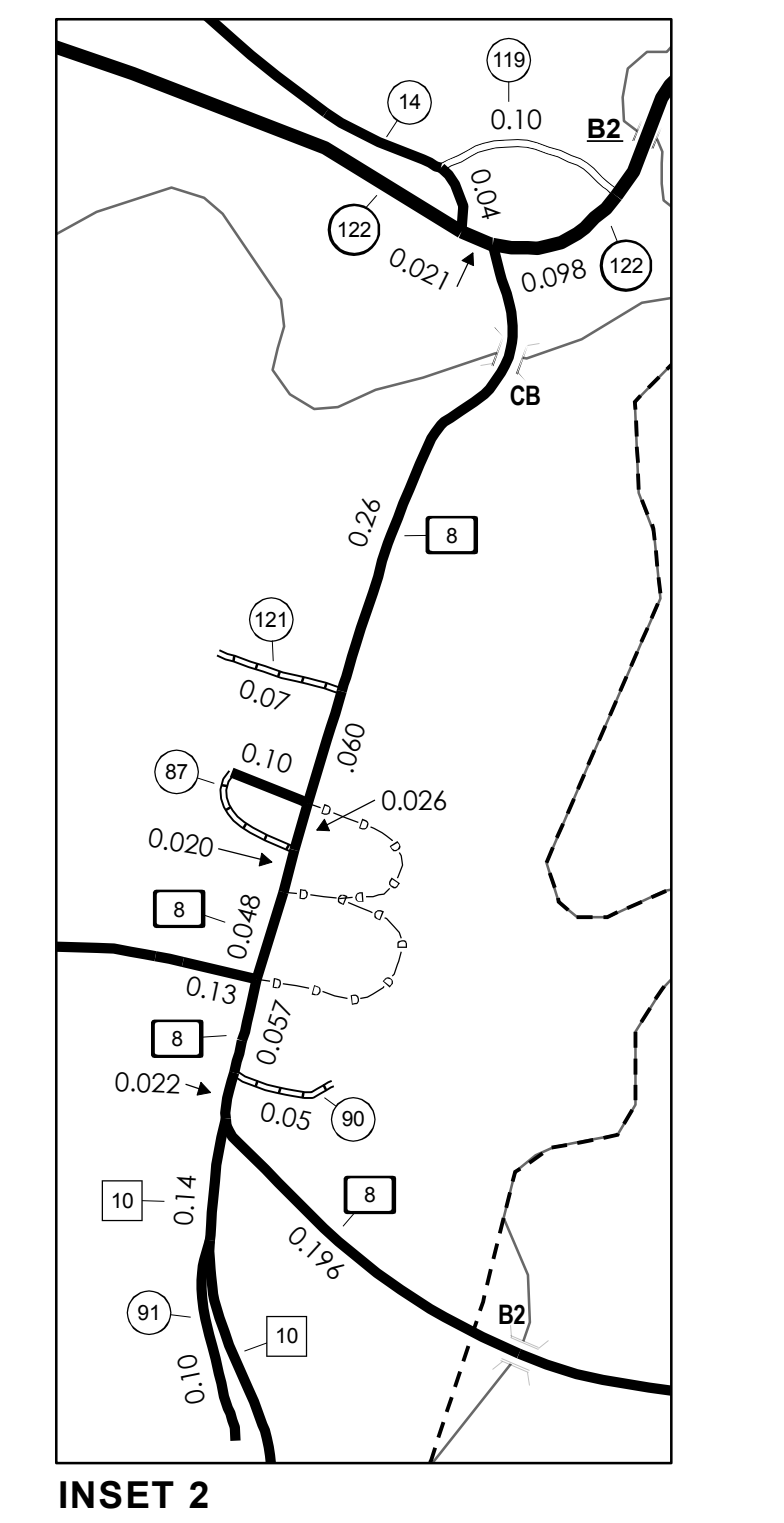
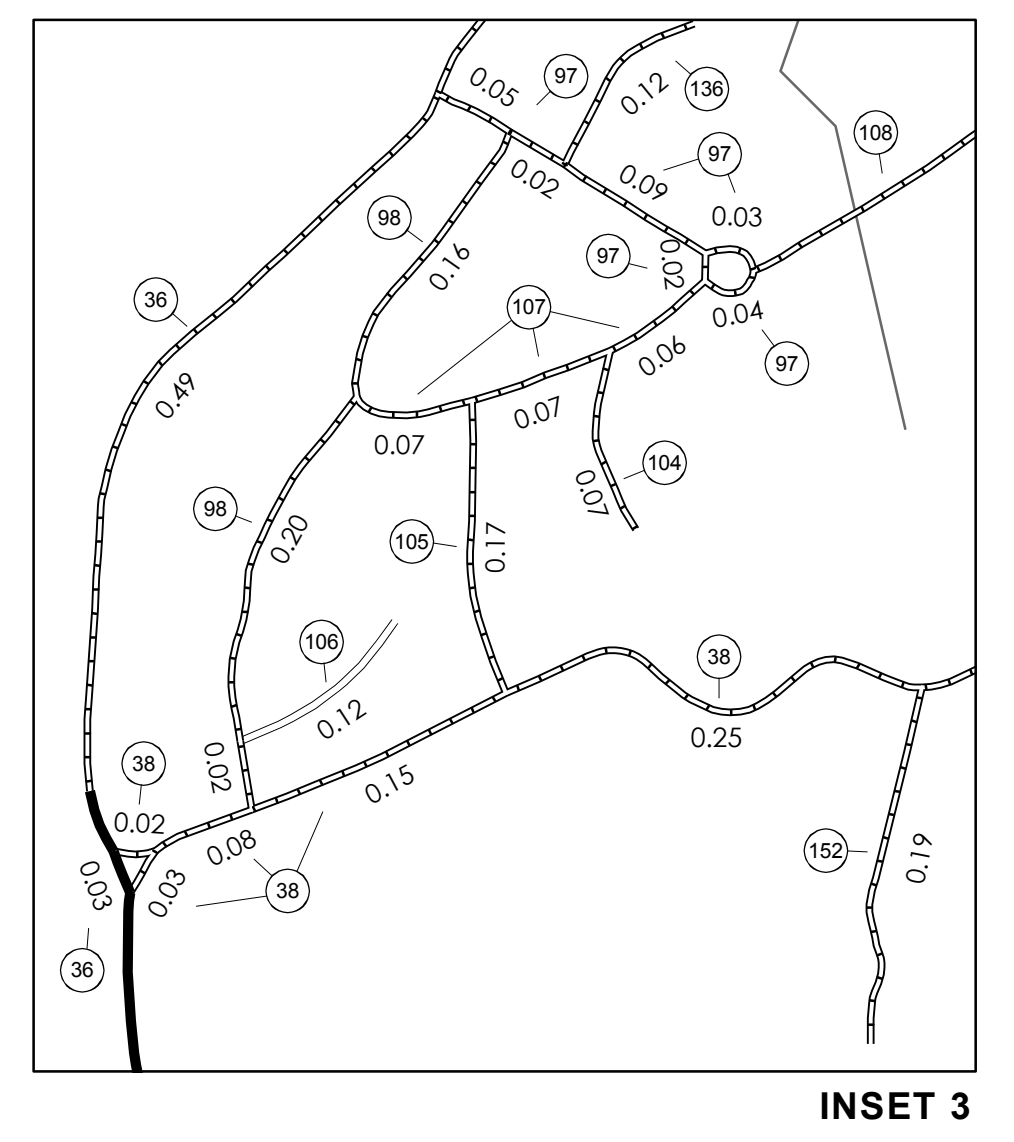
MILEAGE SUMMARY

CLASS	TH	LENGTH	TOTAL CLASS
CLASS 1	TH-8	0.689	0.689
CLASS 2	TH-1	4.050	
	TH-2	3.910	
	TH-4	0.600	
	TH-5	2.980	
	TH-6	1.050	
	TH-7	0.360	
	TH-9	2.060	
	TH-10	1.420	
CLASS 3	TOTAL CLASS 2	16.430	
	TOTAL CLASS 3	62.090	
	TOTAL TOWN	79.209	
STATE HIGHWAY	VT-114	4.030	
	VT-122	4.353	
	TOTAL STATE HIGHWAY	8.383	
STATE HIGHWAY - Ramp	VT-114	0.085	
	TOTAL STATE HIGHWAY - Ramp	0.085	
US HIGHWAY	US-5	5.565	
	TOTAL US HIGHWAY	5.565	
	TOTAL STATE	14.033	
INTERSTATE	I-91	6.846	
	TOTAL INTERSTATE	6.846	
INTERSTATE - Ramp	I-91	2.144	
	TOTAL INTERSTATE - Ramp	2.144	
	TOTAL INTERSTATE	8.990	

TOTAL, TRAVELED HIGHWAYS, FEB. 10, 2007: 102.232
(Excludes Class 4 and Legal Trail Mileage)

- HIGHWAYS**
- INTERSTATE
 - U.S. ROUTE
 - STATE ROUTE
 - CLASS 1
 - CLASS 2
 - CLASS 3
 - CLASS 4
 - INTERSTATE OR DIVIDED HIGHWAY
 - STATE - HARD SURFACE OR PAVED
 - TOWN - HARD SURFACE OR PAVED
 - GRAVEL
 - SOIL OR GRADED AND DRAINED EARTH
 - UNIMPROVED OR PRIMITIVE
 - IMPASSABLE OR UNTRAVELED
 - LEGAL TRAIL
 - DISCONTINUED
 - HIGHWAY CLASS CHANGE
 - RAILROAD
- POLITICAL SUBDIVISIONS**
- STATE BOUNDARY
 - COUNTY BOUNDARY
 - TOWN BOUNDARY
 - VILLAGE BOUNDARY
 - URBAN COMPACT
- WATER BODIES**
- OPEN WATER
 - SWAMP
 - STREAM OR BROOK
- BRIDGE OR CULVERT**
- BRIDGE OR CULVERT GREATER THAN 20'
 - BRIDGE OR CULVERT 6' - 20'
 - STATE BRIDGE IDENTIFIER
 - TOWN BRIDGE IDENTIFIER
- FEDERAL CLASSIFICATION IDENTIFIER**
- FAU URBAN ARTERIAL OR COLLECTOR
 - MA MINOR ARTERIAL
 - MJC MAJOR COLLECTOR
 - MNC MINOR COLLECTOR
 - PA PRINCIPAL ARTERIAL

DISCLAIMER:
The untraveled highways (laid-out town highways), discontinued highways, and legal trails shown hereon are those of which the Agency of Transportation has records; others may exist.
Highway and bridge data by the Agency of Transportation, Policy & Planning Division. All other data from the Vermont Center for Geographic Information.



VERMONT
GENERAL HIGHWAY MAP
Town of Lyndon
CALEDONIA COUNTY
Transportation District #7

Prepared by the
Vermont Agency of Transportation
Policy & Planning Division
in cooperation with
U.S. Department of Transportation
Federal Highway Administration

Mileage as of Feb. 10, 2007
Map generated October, 2007

