

TOWN HWY. No.	LENGTH IN MILES CLASS 3	LENGTH IN MILES CLASS 4	TOWN ROAD NAME
5	0.15		GOODFELLOW RD
17	0.10		TINKHAM RD
19	0.10		BRANCH BROOK RD
31	0.45		WELD RD
32	0.04		PINE ST
32	0.04		TANNERY BROOK RD
32		(0.06)	TH-32
32		(0.11)	TANNERY BROOK RD
32	0.44		LITTLE ITALY RD
47		(0.02)	TH 47
47		(0.01)	POWER HOUSE RD
47	0.12		POWER HOUSE RD
48	0.25		WELTON RD
49	0.12		MILL ST
50	0.10		PARK ST
51	0.12		CHECCHI ST
51	0.24		LITTLE ITALY RD
52		(0.07)	CLARKS LANDING ST
52		(0.06)	TH 52
53	0.32		RAILROAD ST
54	0.10		SNUG HARBOR
55	0.07		COAL KILN RD
56	0.07		RIVER ST
57	0.09		LITTLE ITALY RD
61	0.14		NEW CEMETERY RD
TOTAL	3.06	0.33	

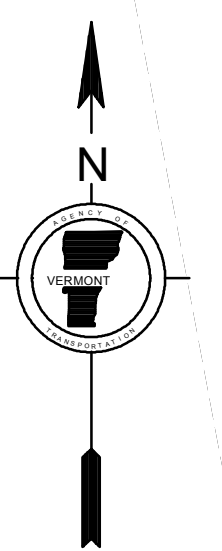
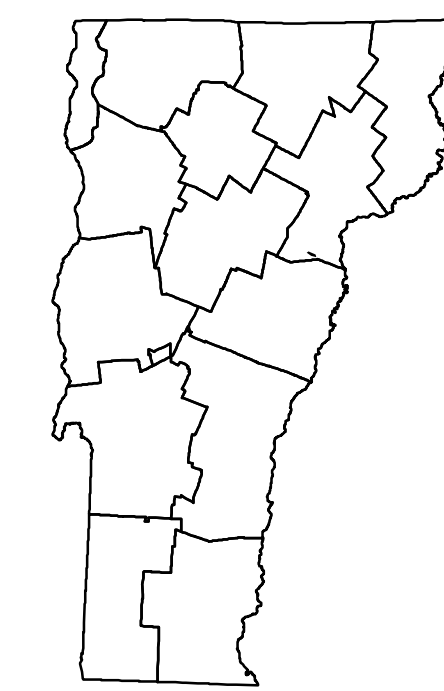
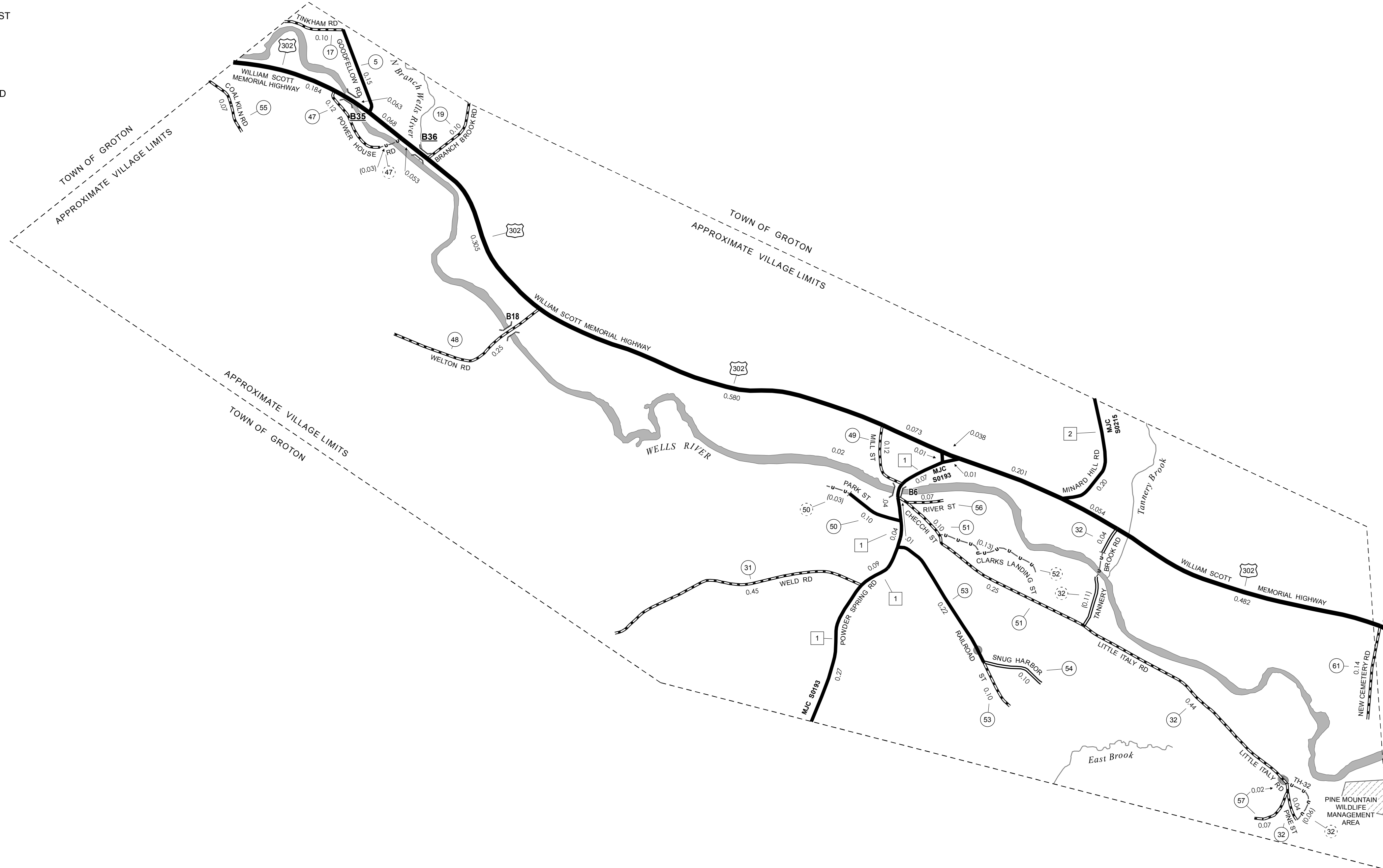
MILEAGE SUMMARY

CLASS 2			
TH-1	0.550		
TH-2	0.200		
	TOTAL CLASS 2		0.750
CLASS 3			
	TOTAL CLASS 3		3.06
	TOTAL TOWN		3.810
US HIGHWAY			
US-302	2.105		
	TOTAL US HIGHWAY		2.105
	TOTAL STATE		2.105
TOTAL, TRAVELED HIGHWAYS, FEB. 10, 2015:			5.915

(Excludes Class 4, Legal Trail, and Unidentified Corridor Mileage)

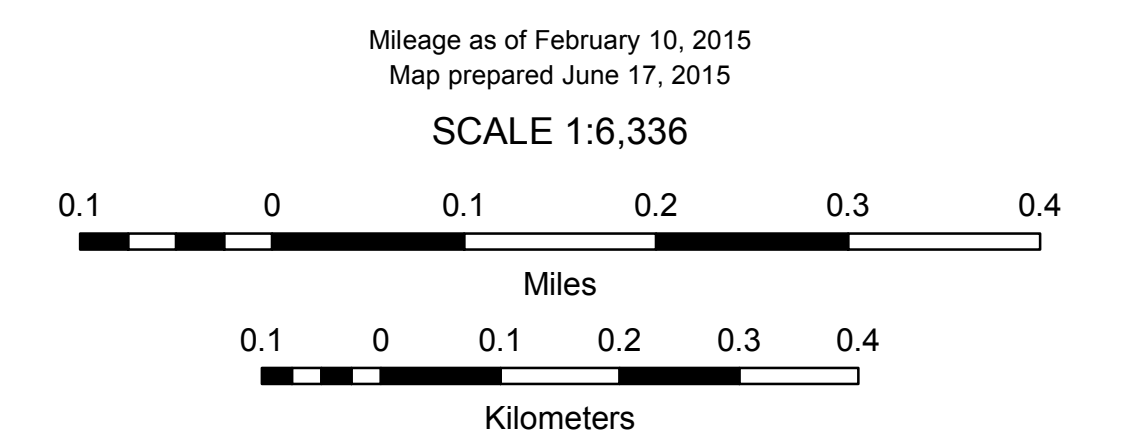
TOWN HWY. No.	LENGTH IN MILES "NOT UP TO STANDARD"
50	(0.03)
TOTAL	0.03

* The sections of the town highways listed above are legally Class 3, but have been deemed "Not Up To Standard" and are functionally Class 4 Town Highways



VERMONT
GENERAL HIGHWAY MAP
Village of Groton
 CALEDONIA COUNTY

Transportation District #7
 Prepared by the
Vermont Agency of Transportation
 Division of Policy, Planning and Intermodal Development
 in cooperation with
U.S. Department of Transportation
Federal Highway Administration



- HIGHWAYS**
- INTERSTATE
 - U.S. ROUTE
 - STATE ROUTE
 - CLASS 1
 - CLASS 2
 - CLASS 3
 - CLASS 4
 - LEGAL TRAIL
- INTERSTATE OR DIVIDED HIGHWAY
- STATE - HARD SURFACE OR PAVED
- TOWN - HARD SURFACE OR PAVED
- GRAVEL
- SOIL OR GRADED AND DRAINED EARTH
- UNIMPROVED OR PRIMITIVE
- IMPASSABLE OR UNTRAVELED
- LEGAL TRAIL
- DISCONTINUED
- HIGHWAY CLASS CHANGE
- RAILROAD
- INACTIVE RAILROAD
- NATIONAL FOREST ROAD
- STATE FOREST HIGHWAY
- PARK AND RIDE
- PUBLIC LAND - GREEN MOUNTAIN NATIONAL FOREST
- PUBLIC LAND - STATE/MUNICIPAL
- POLITICAL SUBDIVISIONS**
- STATE BOUNDARY
 - COUNTY BOUNDARY
 - TOWN BOUNDARY
 - VILLAGE BOUNDARY
 - URBAN COMPACT BOUNDARY
 - WATER BODY
 - STREAM OR BROOK
- BRIDGE OR CULVERT**
- BRIDGE OR CULVERT > 20'
 - BRIDGE OR CULVERT 6' - 20'
 - VOBCIT BRIDGE
 - VOBCIT CULVERT > 6'
 - B34 / C34 STATE BRIDGE OR CULVERT IDENTIFIER
 - B34 / C34 TOWN BRIDGE OR CULVERT IDENTIFIER
- FEDERAL CLASSIFICATION IDENTIFIER**
- FAU URBAN ARTERIAL OR COLLECTOR
 - MA MINOR ARTERIAL
 - MJC MAJOR COLLECTOR
 - MNC MINOR COLLECTOR
 - PA PRINCIPAL ARTERIAL

DISCLAIMER:
 The untraveled highways (laid-out town highways), discontinued highways, and legal trails hereon are those of which the Agency of Transportation has record; others may exist.

Highway and bridge data by the Agency of Transportation. Town short structures are drawn from the Vermont Online Bridge & Culvert Inventory Tool (VOBCIT) database. All other data from the Vermont Center for Geographic Information. Only named streams are shown.

Vermont State Plane Coordinate System
 North American Datum of 1983
 SPCS_Zone_Identifier: 4400
 Geodetic Reference System 80
 2,000-meter grid, Easting - Northing