

TOWN HWY. No.	LENGTH IN MILES CLASS 3	LENGTH IN MILES CLASS 4	TOWN ROAD NAME
5	0.15		GOODFELLOW RD
17	0.10		TINKHAM RD
19	0.10		BRANCH BROOK RD
31	0.45		WELD RD
32	0.04		PINE ST
32	0.04		TANNERY BROOK RD
32		(0.06)	TH-32
32		(0.11)	TANNERY BROOK RD
32	0.44		LITTLE ITALY RD
47		(0.02)	TH 47
47		(0.01)	POWER HOUSE RD
47	0.12		POWER HOUSE RD
48	0.25		WELTON RD
49	0.12		MILL ST
50	0.10		PARK ST
51	0.12		CHECCHI ST
51	0.24		LITTLE ITALY RD
52		(0.07)	CLARKS LANDING ST
52		(0.06)	TH 52
53	0.32		RAILROAD ST
54	0.10		SNUG HARBOR
55	0.07		COAL KILN RD
56	0.07		RIVER ST
57	0.09		LITTLE ITALY RD
61	0.14		NEW CEMETERY RD
TOTAL	3.06	0.33	

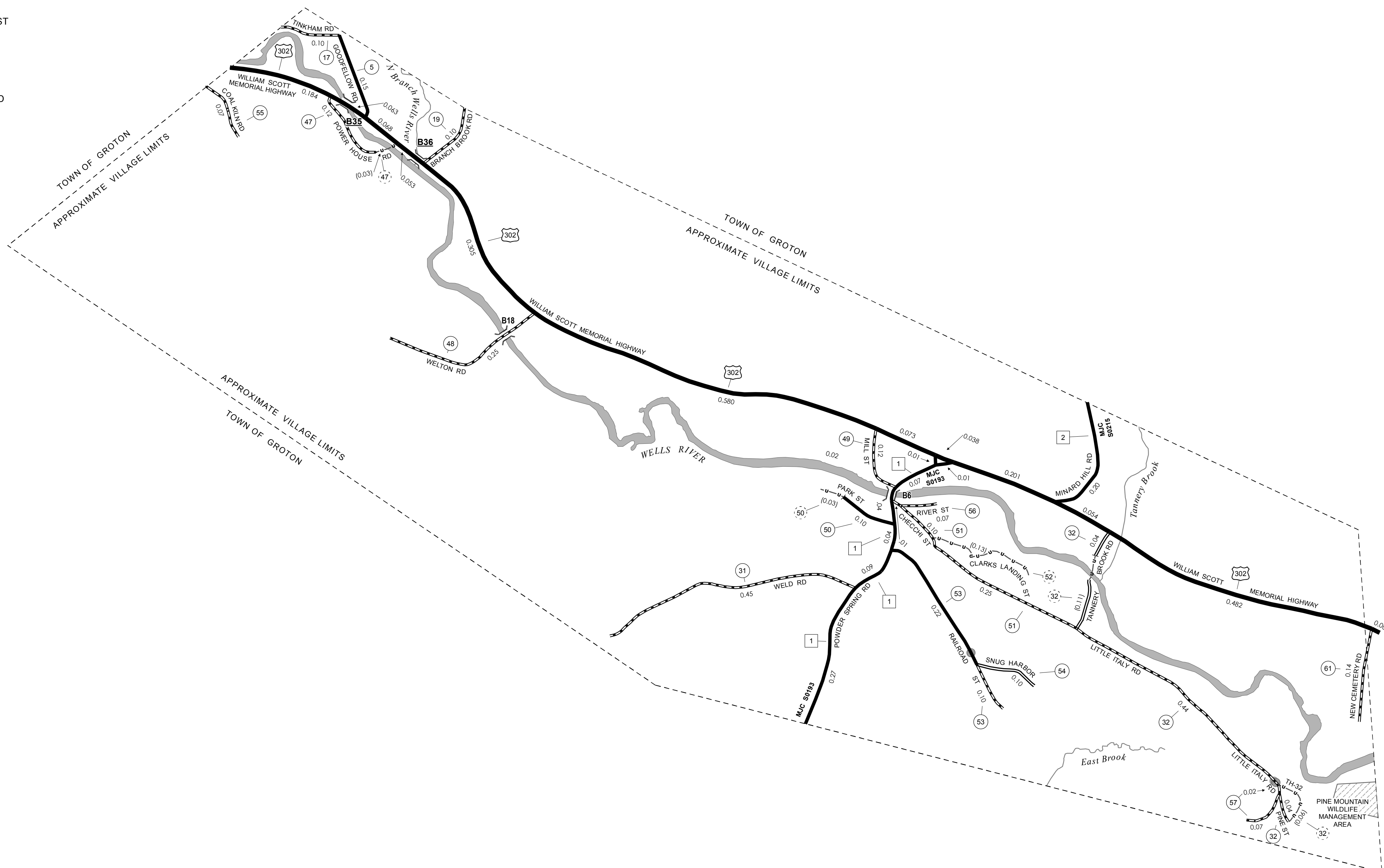
MILEAGE SUMMARY

CLASS 2			
TH-1	0.550		
TH-2	0.200		
	TOTAL CLASS 2		0.750
CLASS 3			
	TOTAL CLASS 3		3.06
	TOTAL TOWN		3.810
US HIGHWAY			
US-302	2.105		
	TOTAL US HIGHWAY		2.105
	TOTAL STATE		2.105
TOTAL, TRAVELED HIGHWAYS, FEB. 10, 2014:			5.915

(Excludes Class 4, Legal Trail, and Unidentified Corridor Mileage)

TOWN HWY. No.	LENGTH IN MILES "NOT UP TO STANDARD"
50	(0.03)
TOTAL	0.03

* The sections of the town highways listed above are legally Class 3, but have been deemed "Not Up To Standard" and are functionally Class 4 Town Highways



HIGHWAYS

- INTERSTATE
- U.S. ROUTE
- STATE ROUTE
- CLASS 1
- CLASS 2
- CLASS 3
- CLASS 4
- LEGAL TRAIL

INTERSTATE OR DIVIDED HIGHWAY
STATE - HARD SURFACE OR PAVED
TOWN - HARD SURFACE OR PAVED
GRAVEL
SOIL OR GRADED AND DRAINED EARTH
UNIMPROVED OR PRIMITIVE
IMPASSABLE OR UNTRAVELED
LEGAL TRAIL
DISCONTINUED
HIGHWAY CLASS CHANGE
RAILROAD
INACTIVE RAILROAD
NATIONAL FOREST ROAD
STATE FOREST HIGHWAY
PARK AND RIDE

PUBLIC LAND - GREEN MOUNTAIN NATIONAL FOREST
PUBLIC LAND - STATE/MUNICIPAL

POLITICAL SUBDIVISIONS

- STATE BOUNDARY
- COUNTY BOUNDARY
- TOWN BOUNDARY
- VILLAGE BOUNDARY
- URBAN COMPACT BOUNDARY
- WATER BODY
- STREAM OR BROOK

BRIDGE OR CULVERT

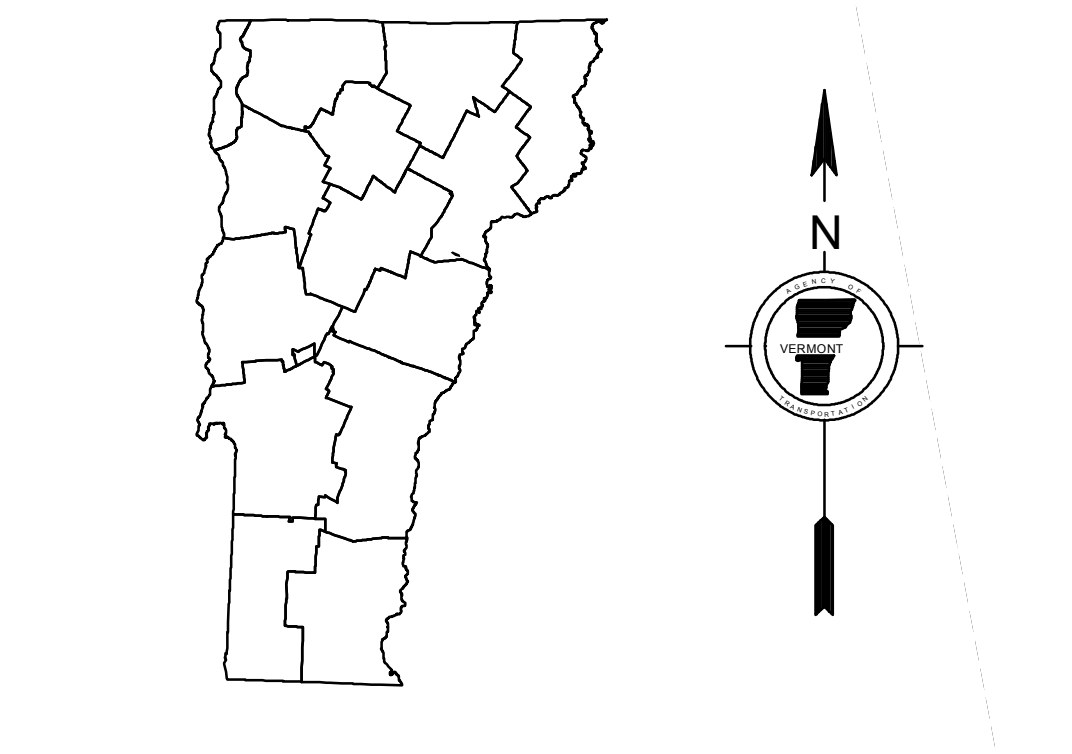
- BRIDGE OR CULVERT > 20'
- BRIDGE OR CULVERT 6' - 20'
- VOBCIT BRIDGE
- VOBCIT CULVERT > 6'
- STATE BRIDGE OR CULVERT IDENTIFIER
- TOWN BRIDGE OR CULVERT IDENTIFIER

FEDERAL CLASSIFICATION IDENTIFIER

- FAU URBAN ARTERIAL OR COLLECTOR
- MA MINOR ARTERIAL
- MJC MAJOR COLLECTOR
- MNC MINOR COLLECTOR
- PA PRINCIPAL ARTERIAL

DISCLAIMER:
The untraveled highways (laid-out town highways), discontinued highways, and legal trails hereon are those of which the Agency of Transportation has record; others may exist.

Highway and bridge data by the Agency of Transportation. Town short structures are drawn from the Vermont Online Bridge & Culvert Inventory Tool (VOBCIT) database. All other data from the Vermont Center for Geographic Information. Only named streams are shown.



VERMONT
GENERAL HIGHWAY MAP
Village of Groton
CALEDONIA COUNTY

Transportation District #7
Prepared by the
Vermont Agency of Transportation
Division of Policy, Planning and Intermodal Development
in cooperation with
U.S. Department of Transportation
Federal Highway Administration

Mileage as of February 10, 2014
Map prepared October 03, 2014
SCALE 1:6,336

