

MILEAGE SUMMARY

CLASS 2			
TH-1	2.250		
TH-2	2.540		
TH-3	2.080		
TOTAL CLASS 2	6.870		
CLASS 3			
TOTAL CLASS 3	24.12		
TOTAL TOWN	30.990		
STATE HIGHWAY			
VT-232	7.182		
TOTAL STATE HIGHWAY	7.182		
US HIGHWAY			
US-302	7.904		
TOTAL US HIGHWAY	7.904		
TOTAL STATE	15.086		

TOTAL TRAVELED HIGHWAYS, FEB. 10, 2014: 46.076  
(Excludes Class 4, Legal Trail, and Unidentified Corridor Mileage)

TOWN HWY. No.

TOWN HWY. No.	LENGTH IN MILES CLASS 3	LENGTH IN MILES CLASS 4
4	3.20	
5	2.25	(2.40)
6		(0.79)
7	0.93	(0.78)
8		(1.25)
9	0.25	
10	0.14	
11	0.08	
12		(0.38)
13	2.20	
14	0.42	
15	0.15	
17	0.22	(0.07)
18	0.35	
19	1.01	
20	0.60	
21	0.42	
22	0.15	
23		(0.35)
24	1.58	
25		(0.28)
26	0.15	(0.57)
27	0.58	(0.72)
28	0.14	(0.05)
29	0.12	
30	0.22	
31	0.45	
32	0.52	(0.17)
33		(0.88)
34	0.20	
35	1.81	
36		(0.52)
37	0.75	
38	0.30	
39		(0.05)
40	0.10	
41	0.71	(0.10)
42		(0.36)
43	0.11	(0.09)
44	0.63	
45		(0.08)
46	0.13	
47	0.12	(0.03)
48	0.25	
49	0.12	
50	0.10	
51	0.36	
52		(0.13)
53	0.32	
54	0.10	
55	0.12	
56	0.07	
57	0.09	
58	0.54	
59	0.09	
60	0.30	
61	0.14	
62	0.15	
63	0.10	
64		(0.58)
65	0.28	
TOTAL	24.12	10.63

TOWN HWY. No.

TOWN HWY. No.	LENGTH IN MILES "NOT UP TO STANDARD"
50	(0.03)
59	(0.07)
TOTAL	0.10

\* The sections of the town highways listed above are legally Class 3, but have been deemed "Not Up to Standard" and are functionally Class 4 Town Highways

DISCLAIMER: The untraveled highways (laid-out town highways), discontinued highways, and legal trails herein are those of which the Agency of Transportation has record; others may exist.

Highway and bridge data by the Agency of Transportation. Town short structures are drawn from the Vermont Online Bridge & Culvert Inventory Tool (VOBCIT) database. All other data from the Vermont Center for Geographic Information. Only named streams are shown.

**HIGHWAYS**

- INTERSTATE
- U.S. ROUTE
- STATE ROUTE
- CLASS 1
- CLASS 2
- CLASS 3
- CLASS 4
- LEGAL TRAIL

INTERSTATE OR DIVIDED HIGHWAY  
STATE - HARD SURFACE OR PAVED  
TOWN - HARD SURFACE OR PAVED  
GRAVEL  
SOIL OR GRADED AND DRAINED EARTH  
UNIMPROVED OR PRIMITIVE  
IMPASSABLE OR UNTRAVELED  
LEGAL TRAIL  
DISCONTINUED  
HIGHWAY CLASS CHANGE  
RAILROAD  
INACTIVE RAILROAD  
NFR NATIONAL FOREST ROAD  
SFH STATE FOREST HIGHWAY  
P PARK AND RIDE

**PUBLIC LAND - GREEN MOUNTAIN NATIONAL FOREST**

**POLITICAL SUBDIVISIONS**

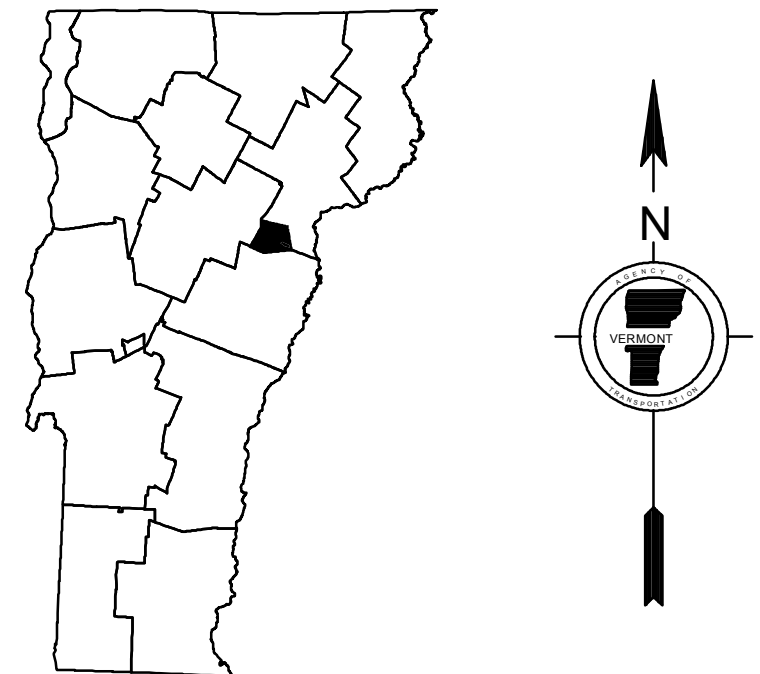
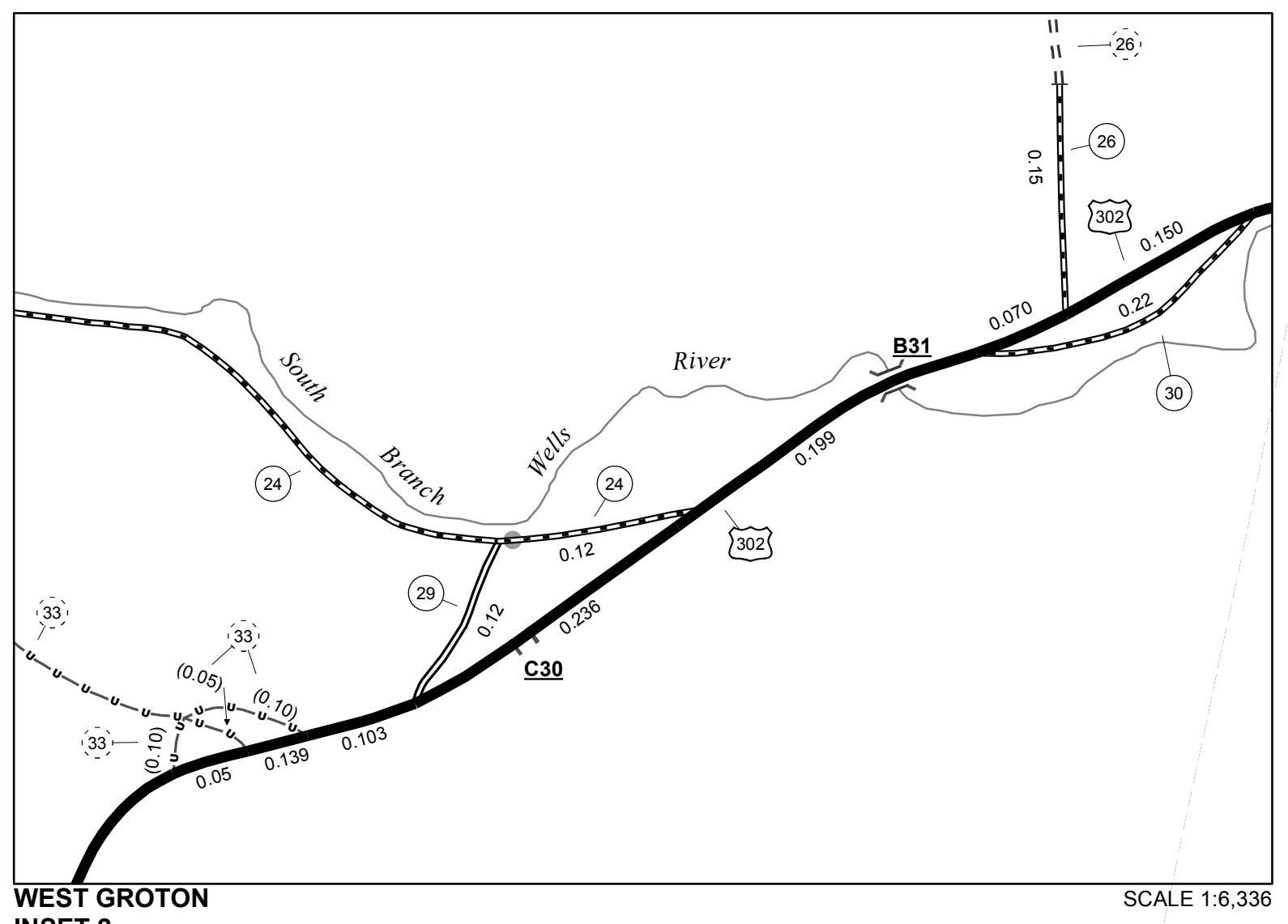
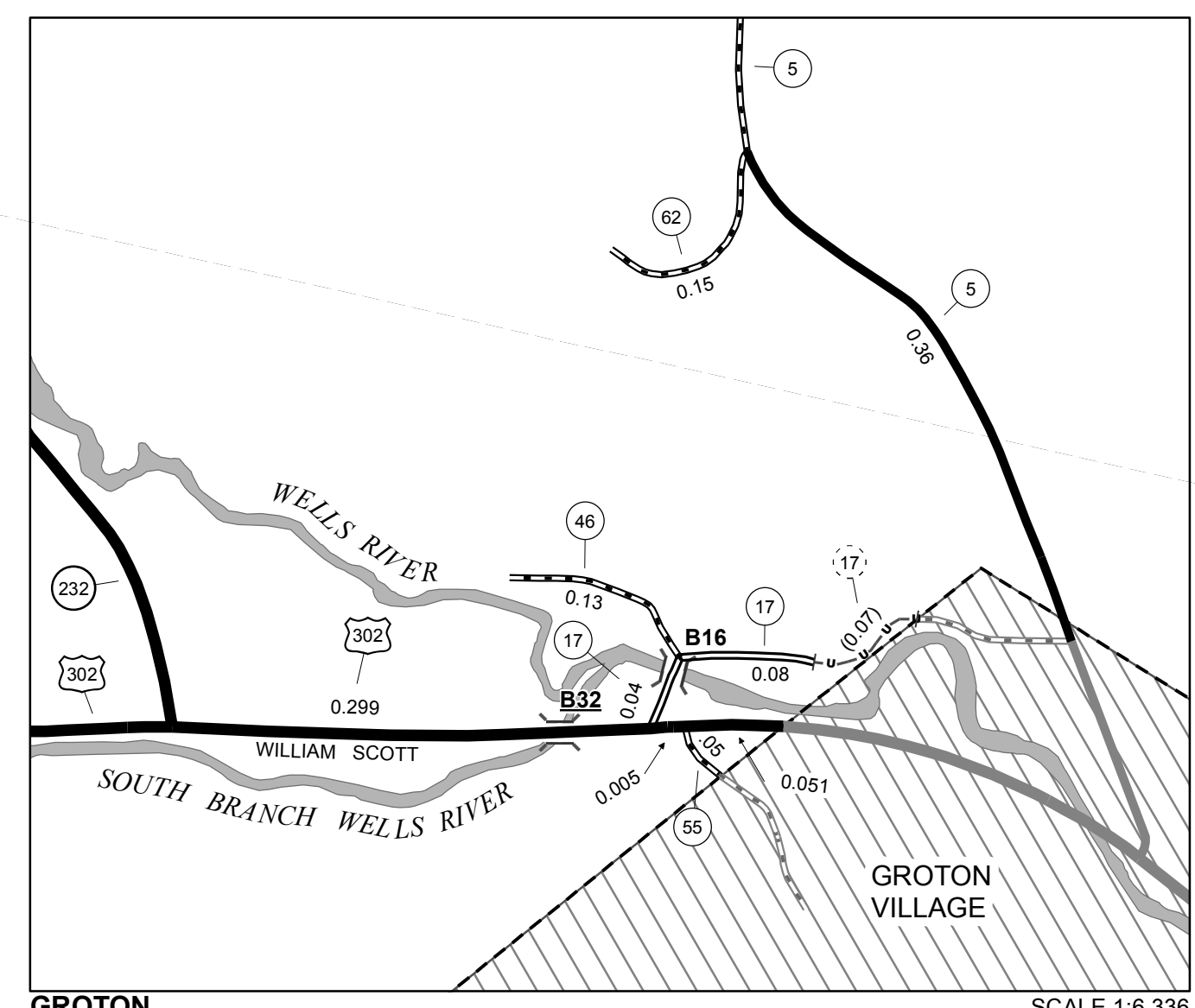
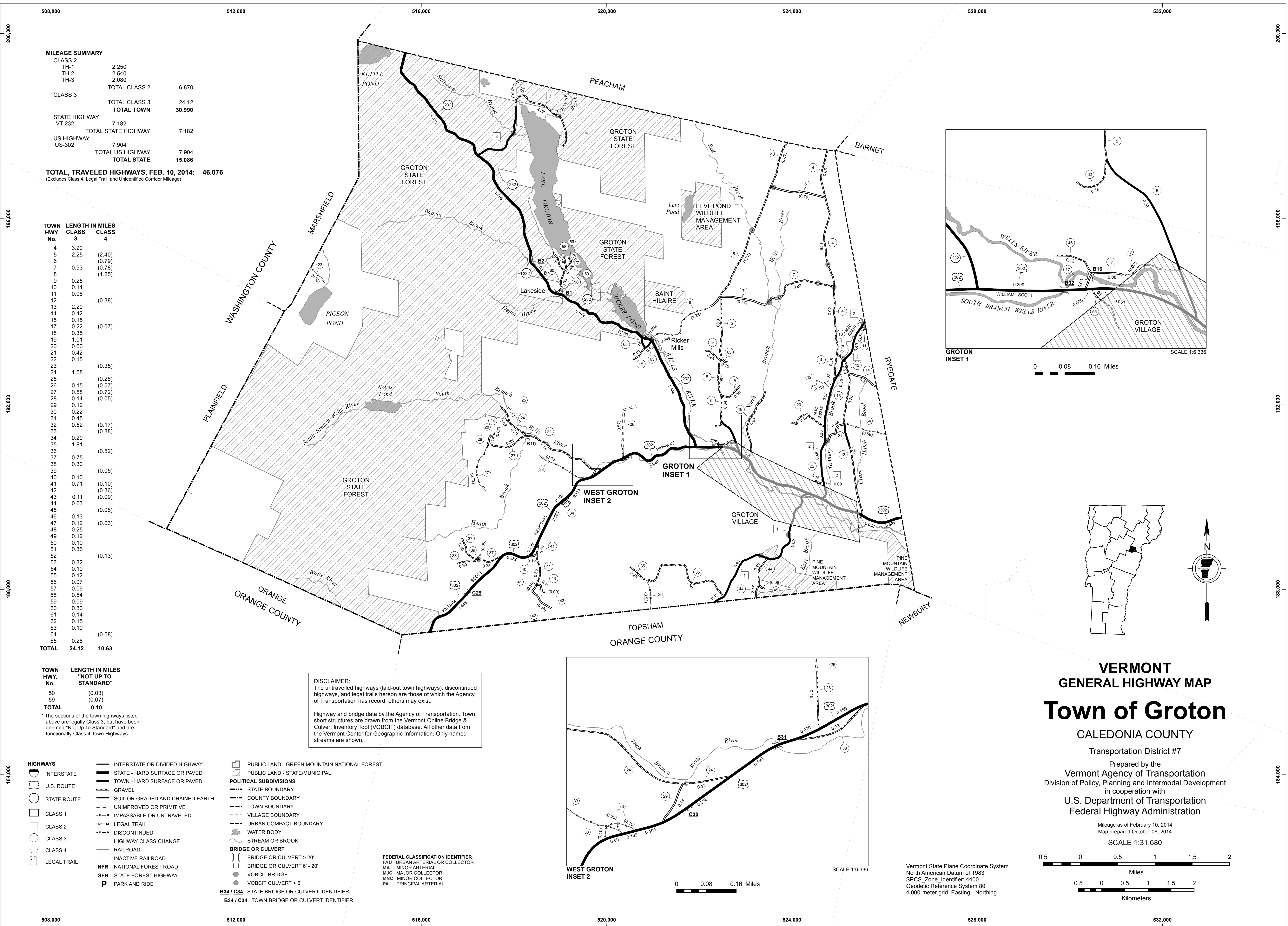
- STATE BOUNDARY
- COUNTY BOUNDARY
- TOWN BOUNDARY
- VILLAGE BOUNDARY
- URBAN COMPACT BOUNDARY
- WATER BODY
- STREAM OR BROOK

**BRIDGE OR CULVERT**

- BRIDGE OR CULVERT > 20'
- BRIDGE OR CULVERT 6' - 20'
- VOBCIT BRIDGE
- VOBCIT CULVERT > 6'
- STATE BRIDGE OR CULVERT IDENTIFIER
- TOWN BRIDGE OR CULVERT IDENTIFIER

**FEDERAL CLASSIFICATION IDENTIFIER**

- FAU URBAN ARTERIAL OR COLLECTOR
- MA MINOR ARTERIAL
- MJC MAJOR COLLECTOR
- MNC MINOR COLLECTOR
- PA PRINCIPAL ARTERIAL



**VERMONT**  
**GENERAL HIGHWAY MAP**  
**Town of Groton**  
CALEDONIA COUNTY  
Transportation District #7  
Prepared by the  
Vermont Agency of Transportation  
Division of Policy, Planning and Intermodal Development  
in cooperation with  
U.S. Department of Transportation  
Federal Highway Administration  
Mileage as of February 10, 2014  
Map prepared October 06, 2014  
SCALE 1:31,680

0.5 0 0.5 1 1.5 2 Miles  
0.5 0 0.5 1 1.5 2 Kilometers

Vermont State Plane Coordinate System  
North American Datum of 1983  
SPCS Zone Identifier: 4400  
Geodetic Reference System 80  
4,000-meter grid, Easting - Northing