

TOWN HWY. No.	CLASS 3	CLASS 4	TOWN HWY. No.	CLASS 3	CLASS 4
9	0.75	(0.92)	38	1.43	(0.26)
10		(0.30)	39	4.0	0.02
12		(0.10)	40	3.38	
13	2.82		41	1.85	
14	0.95		42	1.10	
15	2.90		43	1.71	
16	0.20		44	0.55	
17	1.25		45	1.70	
18	0.50		46		
19	1.98		47		(0.40)
21		(0.06)	48	0.52	
22	0.65		49	0.20	
23		(0.62)	50	0.83	
24		(0.55)	51	0.35	(0.03)
25		(0.30)	52	0.07	(0.17)
26	0.93		53	0.05	
27		(0.25)	54	0.03	(0.12)
28	0.08		56	0.15	
29	2.24		57		(0.03)
30	0.07		58	1.47	
31	0.31		59	0.14	
32	0.43		60	0.15	
33	0.10		61	0.35	
34	0.20		62	0.09	
35	0.13		63	0.90	
36	0.16		64	0.15	
37		(0.79)	65	0.30	
			TOTAL	34.14	4.90

MILEAGE SUMMARY

CLASS 2		
TH-1	2,380	
TH-2	4,950	
TH-3	1,400	
TH-4	1,240	
TH-5	3,410	
TH-6	1,100	
TH-7	1,950	
TH-8	1,030	
TOTAL CLASS 2	17,460	
CLASS 3	34.14	
TOTAL CLASS 3	34.14	
TOTAL TOWN	51,600	
STATE HIGHWAY		
VT-5A	0.657	
VT-114	5.013	
TOTAL STATE HIGHWAY	5,670	
US HIGHWAY		
US-5	4,320	
TOTAL US HIGHWAY	4,320	
TOTAL STATE	9,990	

TOTAL, TRAVELED HIGHWAYS, FEB. 10, 2024: 61,590 (Excludes Class 4 and Legal Trail Mileage)

LEGAL TRAIL No.	LENGTH IN MILES	LEGAL TRAIL
1	(0.50)	
TOTAL	0.50	

- HIGHWAYS**
- INTERSTATE
 - U.S. ROUTE
 - STATE ROUTE
 - CLASS 1
 - CLASS 2
 - CLASS 3
 - CLASS 4
 - LEGAL TRAIL
 - PARK AND RIDE
- INTERSTATE OR DIVIDED HIGHWAY
STATE - HARD SURFACE OR PAVED
TOWN - HARD SURFACE OR PAVED
GRAVEL
SOIL OR GRADED AND DRAINED EARTH
UNIMPROVED OR PRIMITIVE
IMPASSABLE OR UNTRAVELED
LEGAL TRAIL
DISCONTINUED
HIGHWAY CLASS CHANGE
RAILROAD
INACTIVE RAILROAD
PUBLIC LAND - NATIONAL FOREST
PUBLIC LAND - STATE/MUNICIPAL
NFR NATIONAL FOREST ROAD
ACE ARMY CORPS OF ENGINEERS
USGH UNITED STATES GOV. HWY.

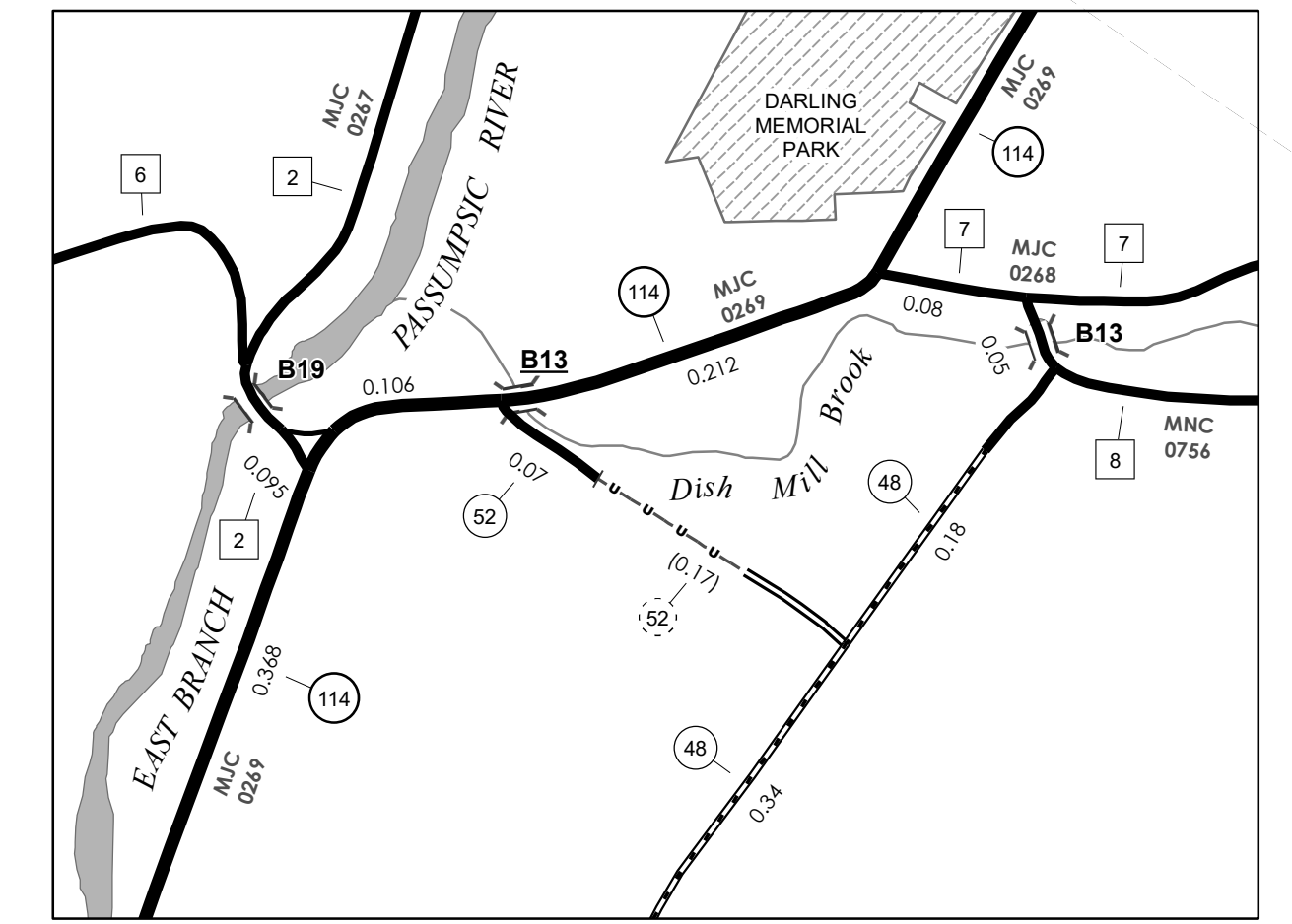
- POLITICAL SUBDIVISIONS**
- STATE BOUNDARY
 - COUNTY BOUNDARY
 - TOWN BOUNDARY
 - VILLAGE BOUNDARY
 - URBAN COMPACT BOUNDARY
 - WATER BODY
 - STREAM OR BROOK
- BRIDGE OR CULVERT**
- BRIDGE OR CULVERT > 20'
 - BRIDGE OR CULVERT 6' - 20'
 - BIKE PATH STRUCTURE
 - VT CULVERTS BRIDGE
 - VT CULVERTS CULVERT > 6'

B34 / C34 STATE BRIDGE OR CULVERT IDENTIFIER
B34 / C34 TOWN BRIDGE OR CULVERT IDENTIFIER

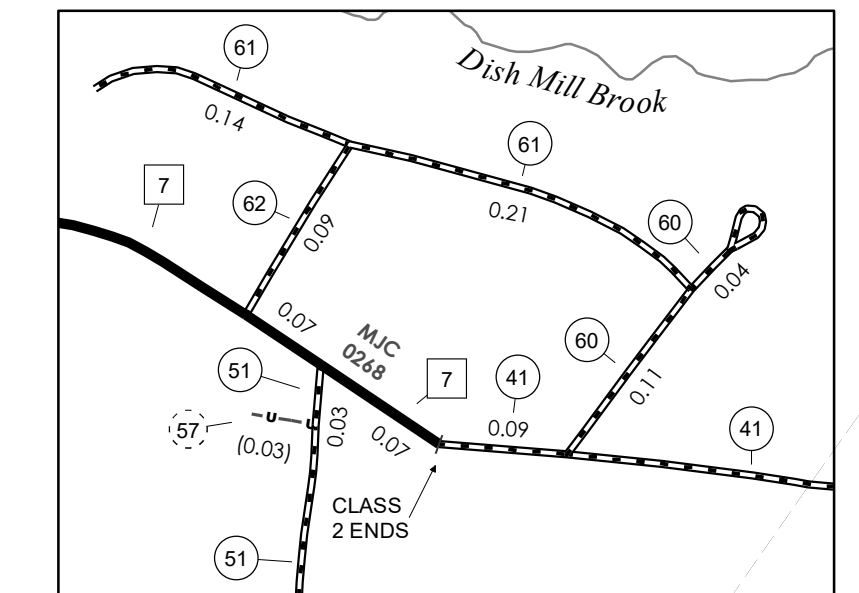
- FEDERAL CLASSIFICATION IDENTIFIER**
- MA MINOR ARTERIAL
 - MJC MAJOR COLLECTOR
 - MNC MINOR COLLECTOR
 - PA PRINCIPAL ARTERIAL

Vermont State Plane Coordinate System
North American Datum of 1983
SPCS_Zone_Identifier: 4400
Geodetic Reference System 80
4,000-meter grid, Easting - Northing

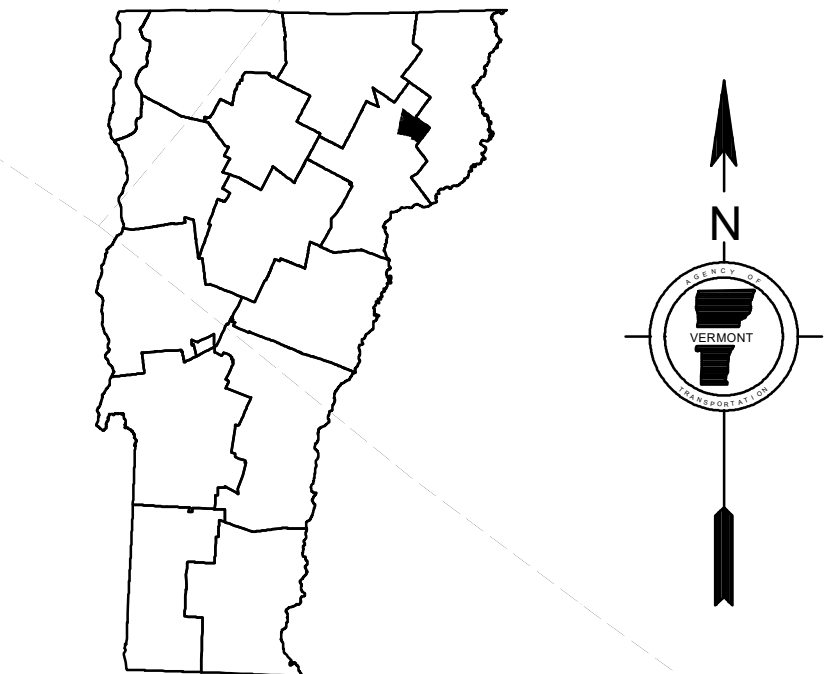
DISCLAIMER:
The untraveled highways (laid-out town highways), discontinued highways, and legal trails hereon are those of which the Agency of Transportation has record; others may exist.
Highway and bridge data by the Agency of Transportation. Town short structures drawn from the VTCULVERTS (formerly VOBICIT) online database. All other data from the Vermont Open Geodata Portal. Only named streams shown.



0 0.08 0.16 Miles



0 0.08 0.16 Miles



VERMONT
GENERAL HIGHWAY MAP
Town of Burke
CALEDONIA COUNTY

Transportation District #7
Prepared by the
Vermont Agency of Transportation
Division of Policy, Planning and Intermodal Development
in cooperation with
U.S. Department of Transportation
Federal Highway Administration

Mileage as of February 10, 2024
Map prepared August 05, 2024

SCALE 1:31,680

